

CATALOG #: \_\_\_\_\_

Type: \_\_\_\_\_

PROJECT: \_\_\_\_\_



**FEATURES**

- Support human-centric design with adaptive, individualized lighting using tunable white light
- Fixture can be surface mounted or semi-recessed for ultra-low-profile look
- Aircraft cable or pendant mount fixture for additional mounting choices
- Decorative die-cast aluminum end caps provide high-end appearance
- Optional anti-microbial white finish available for use in healthcare applications
- Maximize energy savings with efficacies as high as 125 lm/W
- Made Right Here® in the USA

**SPECIFICATIONS**

- HOUSING** – .040" die-formed aluminum with die-cast decorative end caps.
- SHIELDING** – Ribbed acrylic diffuser.
- FINISH** – Textured matte white polyester TGIC powder coat bonded to phosphate-free, multi-stage pretreated metal. All parts painted after fabrication to facilitate installation, increase efficiency, and inhibit corrosion.
- ELECTRICAL** – High-quality mid-power LED board. L70 > 60,000 hours per IES TM-21. Tunable White products use LEDs of multiple CCTs and may produce a perceptibly different shade of white from single-CCT products at the same CCT. All CCTs are within 3 MacAdam ellipses.
- MOUNTING** – Semi-recessed in NEMA Type "G" ceiling, surface (ceiling or wall), or suspended.
- LISTINGS** –
  - cCSAus certified as luminaire suitable for dry or damp locations.
  - Complies with the Buy American Act and other federal regulations. Request certification at [hew.com/baa](http://hew.com/baa).
- WARRANTY** – 5-year limited warranty, see [hew.com/warranty](http://hew.com/warranty).

**ORDERING EXAMPLE: ASM - 4 - L46/8TW - P - F - A - AC(Y12)/D24 - OPTIONS - DALI - UNV**

**ORDERING INFO**

| SERIES | LENGTH              | LUMENS <sup>(1)</sup> | CRI                 | CCT                             | MOUNTING TYPE                  | FIXTURE TYPE                            |
|--------|---------------------|-----------------------|---------------------|---------------------------------|--------------------------------|---|
| ASM    | 4 4'                | 4'                    | 8 80                | TW Tunable white (3000K-5000K)  | S Surface                      | F Electrical feeder unit <sup>(5)</sup> |
|        | 8 8' <sup>(2)</sup> | L25 2,500lm           | 9 90 <sup>(3)</sup> |                                 | P Suspended                    | J Joiner unit <sup>(6)</sup>            |
|        |                     | L46 4,600lm           |                     | TW2 Tunable white (2700K-6500K) | R Semi-recessed <sup>(4)</sup> | S Stand-alone unit <sup>(7)</sup>       |
|        |                     | L50 5,000lm           |                     |                                 |                                |   |
|        |                     | L92 9,200lm           |                     |                                 |                                |   |

| SHIELDING <sup>(8)</sup>  | MOUNTING (EXAMPLE: AC(Y12)/D24) <sup>(9)</sup>  | OPTIONS <sup>(10)</sup>   |
|---------------------------|---|---|
| A Ribbed acrylic diffuser | ADJUSTABLE AIRCRAFT CABLE                       | EM/10WLP Low-profile 10-watt emergency battery  |
|                           | Prefix Type Length                              | AMW Anti-microbial white finish   |
|                           | ACY(Y12)/ D 1" grid & hardpan 24 24"            | (L___) Additional lower lumen packages available. Example: 3,500 lumens = ASM-4-L46/8TW-A-(L35) <sup>(11)</sup> |
|                           | N 9/16" grid 48 48"                             |   |
|                           | S Slot grid 96 96"                              |   |
|                           | PENDANT MOUNT <sup>(12)</sup>                   |   |
|                           | SS-___ Specify length in inches <sup>(13)</sup> |   |

| CONTROL <sup>(14)</sup>                         | VOLTAGE      |
|---|--------------|
| DALI Driver prewired for DALI applications      | 120 120V     |
| DIM (1) 0-10V signal to control dimming         | 277 277V     |
| (1) 0-10V signal to control CCT                 | UNV 120-277V |
| DMX Driver prewired for DMX applications        |              |
| PSQ Lutron T-Series 2-channel tunable white 1%. |              |

**NOTES**

- Lumen output based on 80 CRI/4000K CCT. Actual performance may vary +/-5%, see page 2 for FIXTURE PERFORMANCE DATA. Additional lumen packages available, see Options.
- Ships with (2) 4' lenses.
- Extended lead times may apply. Consult factory for availability.
- Available in stand-alone fixtures only.
- Two end caps packed with fixture, quick-connect wiring harness. Suspended includes straight white cord standard. Wire gauge to be determined by row length.
- Quick-connect wiring harness.
- Two end caps included. Suspended includes straight white cord standard. Wire gauge to be determined by row length.
- See page 2 for FIXTURE DETAILS.
- See page 3 for MOUNTING DETAILS. Power cord provided with aircraft cables only. Specify with suspended mounting type only.
- See page 3 for FINISH OPTIONS.
- Specify in increments of 100 nominal lumens. Option must be specified with next higher lumen package.
- 3/8" IPS Stem and ø5" canopy.
- 4" minimum. Two stem sets required. One additional stem set required for each row mounted fixture.
- See page 3 for CONTROL DETAILS.



## FIXTURE PERFORMANCE DATA

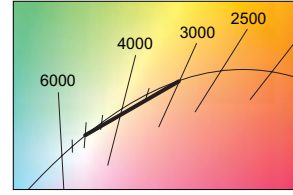
|    | LED PACKAGE | DELIVERED LUMENS | WATTAGE | EFFICACY (lm/W) |
|----|-------------|------------------|---------|-----------------|
| 4' | L25         | 2550             | 21.4    | 119             |
|    | L46         | 4670             | 39.8    | 117             |
| 8' | L50         | 5100             | 40.7    | 125             |
|    | L92         | 9340             | 79.6    | 117             |

- Photometrics tested in accordance with IESNA LM-79. Results based on 80 CRI/4000K CCT, average wattage for 120V through 277V input, and 25°C ambient temperature. Actual performance may vary +/-5%.
- To calculate lumen output in emergency mode, multiply the battery wattage by the efficacy.
- Use multiplier table to calculate additional options.

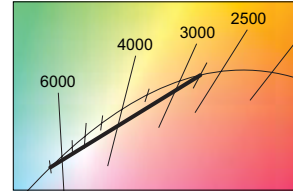
## MULTIPLIER TABLE

|        |       | COLOR TEMPERATURE |         |        |         |
|--------|-------|-------------------|---------|--------|---------|
|        |       | TW                |         | TW2    |         |
|        | CCT   | LUMENS            | WATTAGE | LUMENS | WATTAGE |
| 80 CRI | 2700K | -                 | -       | 0.93   | 1.02    |
|        | 3000K | 0.95              | 1.04    | 0.95   | 1.01    |
|        | 3500K | 0.98              | 1.02    | 0.98   | 1.00    |
|        | 4000K | 1.00              | 1.00    | 1.00   | 1.00    |
|        | 5000K | 0.96              | 1.04    | 1.02   | 1.00    |
|        | 6500K | -                 | -       | 1.01   | 1.04    |
| 90 CRI | 2700K | -                 | -       | 0.81   | 1.02    |
|        | 3000K | 0.83              | 1.04    | 0.83   | 1.01    |
|        | 3500K | 0.86              | 1.02    | 0.86   | 1.00    |
|        | 4000K | 0.88              | 1.00    | 0.88   | 1.00    |
|        | 5000K | 0.84              | 1.04    | 0.89   | 1.00    |
|        | 6500K | -                 | -       | 0.88   | 1.04    |

## TW

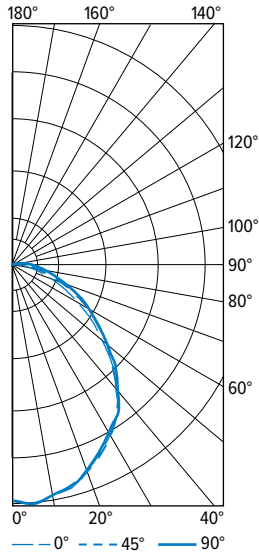


## TW2



## PHOTOMETRY

ASM-4-L46/8TW-A-S-DALI-UNV Total Luminaire Output: 4670 lumens; 39.8 Watts | Efficacy: 117.3 lm/W | 80 CRI; 4000K CCT

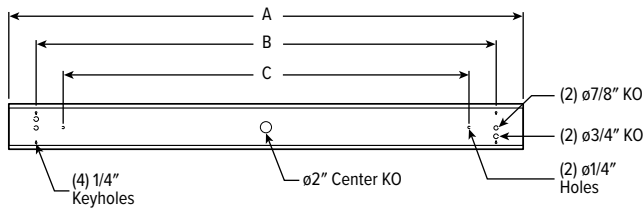


| VERTICAL ANGLE | HORIZONTAL ANGLE |      |      | ZONAL LUMENS |
|----------------|------------------|------|------|--------------|
|                | 0°               | 45°  | 90°  |              |
| 0              | 1787             | 1787 | 1787 |              |
| 5              | 1817             | 1815 | 1815 | 171          |
| 15             | 1738             | 1732 | 1726 | 485          |
| 25             | 1572             | 1561 | 1554 | 717          |
| 35             | 1366             | 1364 | 1364 | 843          |
| 45             | 1043             | 1072 | 1079 | 819          |
| 55             | 699              | 763  | 778  | 674          |
| 65             | 410              | 502  | 520  | 482          |
| 75             | 189              | 287  | 305  | 287          |
| 85             | 48               | 136  | 165  | 135          |
| 90             | 11               | 77   | 110  |              |
| 95             | 0                | 40   | 72   | 45           |
| 105            | 0                | 0    | 24   | 10           |
| 115            | 0                | 0    | 0    | 1            |
| 125            | 0                | 0    | 0    | 0            |
| 135            | 0                | 0    | 0    | 0            |
| 145            | 0                | 0    | 0    | 0            |
| 155            | 0                | 0    | 0    | 0            |
| 165            | 0                | 0    | 0    | 0            |
| 175            | 0                | 0    | 0    | 0            |
| 180            | 0                | 0    | 0    |              |

| ZONE     | LUMENS | % FIXTURE |
|----------|--------|-----------|
| 0 - 30   | 1374   | 29        |
| 0 - 40   | 2217   | 48        |
| 0 - 60   | 3709   | 79        |
| 0 - 90   | 4613   | 99        |
| 90 - 120 | 57     | 1         |
| 90 - 150 | 57     | 1         |
| 90 - 180 | 57     | 1         |
| 0 - 180  | 4670   | 100       |

## FIXTURE DETAILS

### BACKVIEW



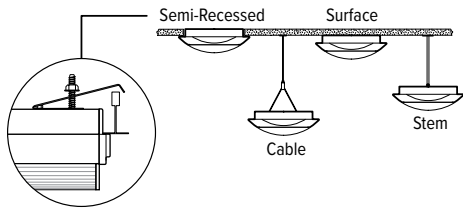
|    | A         | B   | C   |
|----|-----------|-----|-----|
| 4' | 46-13/16" | 40" | 32" |
| 8' | 93-5/8"   | 87" | 80" |

Dimension A is for row-mounted units without end caps. End caps add 3/4" to dimension A.



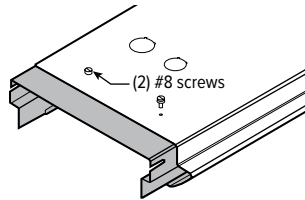
## MOUNTING DETAILS

### CONTINUOUS ROW



### ROW ALIGNER

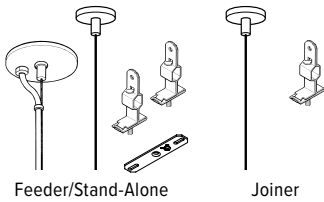
(not available with semi-recessed units)



Semi-recessed model is suitable for installation in NEMA Type "G" ceiling system of 1" wide (nominal) tees mounted across ends of fixture 48" O.C., using factory furnished mounting brackets. Fixtures may be mounted in continuous row. Ceiling tiles are supported along sides by fixture housing. Fixture protrudes 2" below ceiling plane.

Depending on installation method, cable mounting may require additional counter-weights due to side-mounted driver.

### STANDARD HARDWARE FOR SUSPENDED PRODUCT (Grid and Hardpan)



#### Notes:

- Fixtures specified with suspended mounting type are provided with adjustable length aircraft cables with two-point "Y" connectors and mounting hardware, must specify.
- Electrical supply is brought into the feeder fixture, either as part of a row or as a stand-alone unit. Joiner fixtures complete the row.
- The feeder kits are standard with a 5" canopy to cover the junction box and a 2" canopy at the non-feed point. No J-box is required at non-feed points.

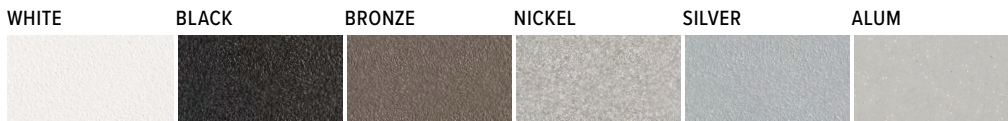
### CORD FOR SUSPENDED PRODUCT

Units specified with aircraft cable require cord. Please specify cord type using ordering information below. Long fixture rows may require multiple feed points based on 18ga conductor size.

| EXAMPLE: S2438D/W |        |                           |           |                      |
|-------------------|--------|---------------------------|-----------|----------------------|
| CORD TYPE         | LENGTH | # OF COND. <sup>[1]</sup> | WIRE SIZE | COLOR                |
| S                 | 24 24" | 3                         | 8D 18ga   | /W White<br>/B Black |
|                   | 48 48" | 4                         |           |                      |
|                   | 96 96" | 5                         |           |                      |
|                   |        | 6                         |           |                      |

<sup>1</sup> Includes (2) 22ga purple & pink dimming conductors

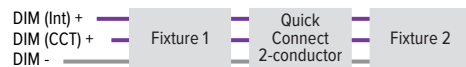
## FINISH OPTIONS



For custom color, please specify RAL code or a manufacturer code with description. All custom colors other than RAL require two sample swatches, minimum 1" square.

## CONTROL DETAILS

### DIM



### DMX



### DALI



### LUTRON T-SERIES

