

CATALOG #: _____

TYPE: _____

PROJECT: _____



FEATURES

- Ideal for schools, hallways, stairwells, dormitories, locker rooms, or vandal prone areas
- IK10 rated for demanding environments
- Heavy-duty marine grade aluminum housing, die-cast end caps, and extremely durable impact-resistant polycarbonate lens add strength and durability
- Tamper-resistant #8 snake eye screws provided to protect against vandals
- Optional occupancy sensor available for use in stairwells and low traffic areas
- Designed for surface, wall, pendant, or vandal-resistant corner mount
- ADA compliant in wall mount applications
- Features easy row mount capability with integral alignment pieces
- Multiple dimming protocols available
- Wireless in-fixture control solutions available
- Made Right Here® in the USA

SPECIFICATIONS

- HOUSING – Marine grade aluminum. Extruded housing with die-cast end caps.
- SHIELDING – UV stabilized polycarbonate lens, .150" thick with .040" matte white acrylic underlay to minimize pixelation.
- REFLECTIVE SURFACES – 92% minimum average reflective white powder coat on interior components.
- FINISH – Textured matte white polyester TGIC powder coat bonded to phosphate-free, multi-stage pretreated metal. All parts painted after fabrication to facilitate installation, increase efficiency, and inhibit corrosion.
- ELECTRICAL – High-quality mid-power LED board. Rated for 50,000 hours at 70% lumen maintenance (L70). Listed for 25°C ambient operating temperature.
- MOUNTING – Surface (ceiling or wall) or suspended (hanging hardware required).
- LISTINGS –
 - cCSAus certified as luminaire suitable for dry or damp locations.
 - Suitable for wet location under covered ceiling when specified with WET/CC option.
 - ADA compliant in wall mount applications.
 - IK10 rated
 - Complies with the Buy American Act and other federal regulations. Request certification at hew.com/baa.
- WARRANTY – 5-year limited warranty, see hew.com/warranty.

ORDERING EXAMPLE: AVX - 4 - L100/835 - CPC - OPTIONS - CONTROL/DIM - UNV

ORDERING INFO

SERIES	LENGTH	LUMENS ⁽¹⁾	CRI	CCT	SHIELDING ⁽²⁾
AVX	2 2'	2'	8 80	27 2700K	CPC Clear, UV stabilized polycarbonate, .150" thick WPC White, UV stabilized polycarbonate, .150" thick
	4 4'	L25 2,500lm	9 90 ⁽⁴⁾	30 3000K	
	8 8' ⁽³⁾	L42 4,200lm	L124 12,400lm	35 3500K	
		4'	L164 16,400lm	40 4000K	
	L36 3,600lm	L200 20,000lm	50 5000K		
	L62 6,200lm				
	L82 8,200lm				
	L100 10,000lm				

OPTIONS

See page 3 for FINISH OPTIONS.

EM/10WRM	Remote mount 10-watt emergency battery ⁽⁵⁾
EM/10WLP	Low profile 10-watt emergency battery ⁽⁶⁾
QC__	Quick-connect wiring harness. ⁽⁷⁾
(L__)	Additional lower lumen packages available. ⁽⁸⁾ Example: 9,000 nominal lumens = AVX-4-L100/835-(L90).
AVX-4 CMB	4', vandal-resistant corner mount ⁽⁹⁾
WET/CC	Wet location under covered ceiling ⁽¹⁰⁾

MOUNTING (EXAMPLE: AC(Y12)/D48) ⁽¹¹⁾

ADJUSTABLE AIRCRAFT CABLE ⁽¹²⁾		
Prefix	Type	Length
AC(Y12)/	D 1" grid & hardpan	24 24"
	N 9/16" grid	48 48"
	S Slot grid	96 96"

PENDANT MOUNT ⁽¹³⁾

SWS(AVX)12	Pendant swivel stem mount with 12" stem
SS(AVX)12	Pendant stem mount with 12" stem

CONTROL ⁽¹⁴⁾

See page 5 for ADDITIONAL CONTROL OPTIONS.

–	None
AVI-LVFA	Avi-on wireless fixture control ⁽¹⁵⁾
AWN R	Lutron Athena wireless node integral fixture control, RF only ⁽¹⁶⁾

DRIVER

See page 5 for ADDITIONAL DRIVER OPTIONS.

DIM	Driver with external dimming wires
DRV	Driver without external dimming wires
DA	Driver with 12V auxiliary power, without external dimming wires ⁽¹⁷⁾
DSR	Sensor-ready driver without external dimming wires (D4i DALI-2). ⁽¹⁸⁾

VOLTAGE

120	120V
277	277V
UNV	120-277V
347	347V ⁽¹⁹⁾

ACCESSORIES

TPSN-8 TOOL #8, tamper-resistant snake eyes tool. ⁽²⁰⁾

NOTES

- 1 Lumens based on CPC shielding, 80 CRI/3500K CCT. Actual performance may vary +/-5%. See page 2 for FIXTURE PERFORMANCE DATA. Additional lumen packages available, see options.
- 2 See page 3 for SHIELDING DETAILS.
- 3 Two 4' units end-to-end.
- 4 Extended lead times may apply. Consult factory for availability.
- 5 2' only. See page 3 for MOUNTING DETAILS.
- 6 4' and 8' only.
- 7 See page 3 for QUICK-CONNECT OPTIONS.
- 8 Specify in increments of 100 nominal lumens. Option must be specified with next higher lumen package.
- 9 See page 3 for MOUNTING DETAILS.
- 10 Not available with AVX-4 CMB corner mount, occupancy sensors, or suspended mounting hardware.
- 11 Required with suspended mount fixtures.
- 12 Units specified with ACF(Y12)___ require cord. See page 3 for MOUNTING DETAILS.
- 13 Two stem sets required for 2' and 4' fixtures; three stem sets required for 8'. One additional stem set required for each 4' length when row mounted.
- 14 See page 4 for AVI-ON BLUETOOTH WIRELESS CONTROL DETAILS. See page 4 for SENSOR & NODE PLACEMENT DETAILS.
- 15 DA Driver only.
- 16 DA and DSR Drivers only.
- 17 Avi-on and Lutron Athena Controls only.
- 18 Lutron Athena Controls only.
- 19 Not available with EM batteries, DA or DSR drivers.
- 20 Tamper-resistant tool must be ordered separately. Please specify quantity required per project.



FIXTURE PERFORMANCE DATA

	LED PACKAGE	DELIVERED LUMENS		WATTAGE	EFFICACY (lm/W)	
		CLEAR (CPC)	WHITE (WPC)		CLEAR (CPC)	WHITE (WPC)
2'	L25	2420	1670	21	115	80
	L42	4279	2953	37	116	80
	L36	3677	2537	31	119	82
4'	L62	6253	4315	57	110	76
	L82	8302	5728	71	117	81
	L100	9893	6750	88	112	77
	L72	7221	4982	61	118	82
8'	L124	12507	8630	115	109	75
	L164	16603	11456	141	118	81
	L200	20153	13906	177	114	79

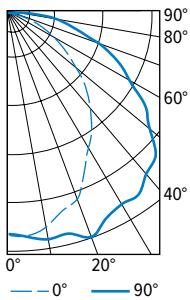
MULTIPLIER TABLE

	COLOR TEMPERATURE	
	CCT	CONVERSION FACTOR
80 CRI	2700K	0.97
	3000K	0.99
	3500K	1.00
	4000K	1.03
	5000K	1.06
90 CRI	2700K	0.80
	3000K	0.82
	3500K	0.83
	4000K	0.86
	5000K	0.89

- Photometrics tested in accordance with IESNA LM-79. Results based on CPC shielding, 80 CRI/3500K CCT, average wattage for 120V through 277V input, and 25°C ambient temperature. Actual performance may vary +/-5%.
- To calculate lumen output in emergency mode, multiply the battery wattage by the efficacy.
- Use multiplier table to calculate additional options.

PHOTOMETRY

AVX-4-L62/835-CPC Total Luminaire Output: 6253 lumens; 57 Watts | Efficacy: 110 lm/W | 80 CRI; 3500K CCT

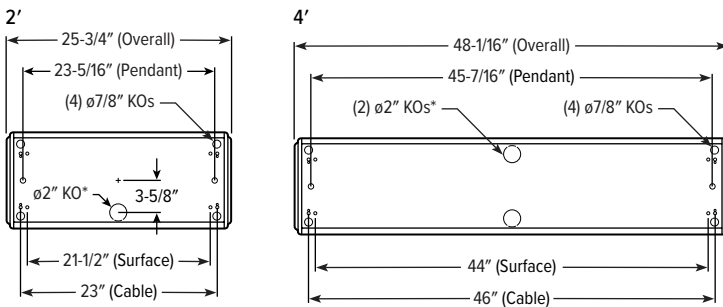


VERTICAL ANGLE	HORIZONTAL ANGLE			ZONAL LUMENS
	0°	45°	90°	
0	2043	2043	2043	
5	2055	2067	2083	196
15	1887	2003	2110	569
25	1616	1862	2105	861
35	1326	1721	2053	1048
45	985	1516	1882	1104
55	663	1185	1508	987
65	395	855	1110	765
75	149	480	662	464
85	24	199	337	205
90	6	94	189	

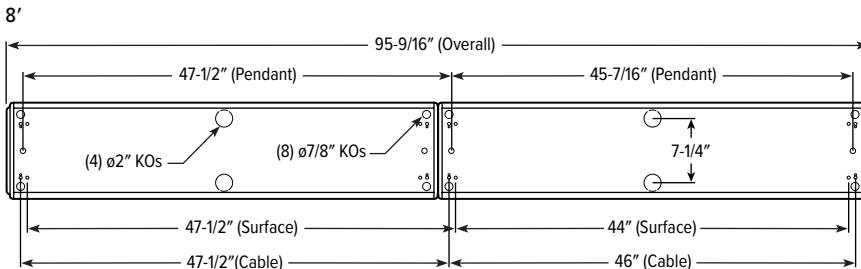
LUMEN SUMMARY	ZONE	LUMENS	% FIXTURE
	0 - 30	1627	26
	0 - 40	2676	43
	0 - 60	4766	76
	0 - 90	6201	99
	0 - 180	6253	100

FIXTURE DETAILS

BACKVIEW

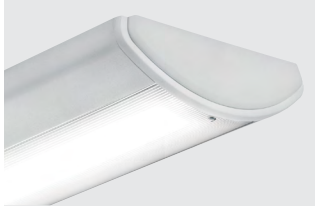


- For continuous row applications, subtract 9/16" from overall dimension for every additional fixture per row.
- 2" KO's not available with 2' fixture when specified with EM battery.
- 4' fixture may only have (1) 2" KO when specified with occupancy sensor.



SHIELDING DETAILS

CPC

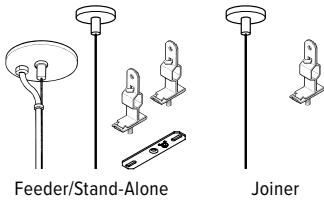


WPC



MOUNTING DETAILS

STANDARD HARDWARE FOR SUSPENDED PRODUCT (Grid and Hardpan)



Notes:

- Fixtures specified with suspended mounting type are provided with adjustable length aircraft cables with two-point "Y" connectors and mounting hardware, must specify.
- Electrical supply is brought into the feeder fixture, either as part of a row or as a stand-alone unit. Joiner fixtures complete the row.
- The feeder kits are standard with a 5" canopy to cover the junction box and a 2" canopy at the non-feed point. No J-box is required at non-feed points.

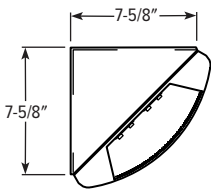
CORD FOR SUSPENDED PRODUCT

Units specified with aircraft cable require cord. Please specify cord type using ordering information below. Long fixture rows may require multiple feed points based on 18ga conductor size.

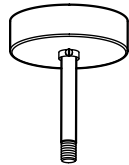
EXAMPLE: S2438D/W				
CORD TYPE	LENGTH	# OF COND. ⁽¹⁾	WIRE SIZE	COLOR
S	24 24"	3	8D 18ga	/W White /B Black
	48 48"	4		
	96 96"	5		
		6		

¹ Includes (2) 22ga purple & pink dimming conductors

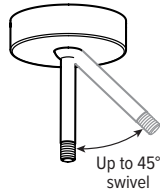
CORNER MOUNT



SS(AVX)12

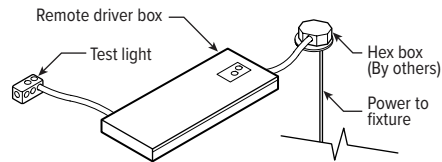


SWS(AVX)12



REMOTE MOUNT BATTERY

Max remote distance 50'.

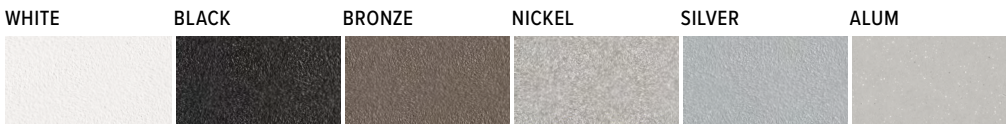


QUICK-CONNECT OPTIONS

Note: Quick-connect wiring required for row mounting. All QC harnesses contain (5) 16ga conductors plus ground.

DESIGNATION	NUMBER OF 16GA WIRES FACTORY CONNECTED (EXCLUDING GROUND)	WIRE COLOR/POWER SUPPLY FACTORY CONNECTIONS	TYPICAL USE
QCBW	2	Black, White	On/off switching (DRV) or line voltage dimming (DIM LINE)
QCRW	2	Red, White	Alternating circuits on/off switching (DRV) or line voltage dimming (DIM LINE)
QCBRW	3	Black, Red, White	On/off switching (DRV) or line voltage dimming when equipped with EM battery packs
QCBW/PK	4	Black, White, Purple, Pink	Single circuit with 0-10V low voltage dimming (DIM)
QCRW/PK	4	Red, White, Purple, Pink	Alternating circuits on/off switching with 0-10V low voltage dimming (DIM)
QCBRW/PK	5	Black, Red, White, Purple, Pink	On/off switching when equipped with EM battery packs and 0-10V dimming (DIM)
QCBW/RPK	5	Black, White, Red, Purple, Pink	On/off switching with 0-10v dimming and 0-10v tunable using shared common
QCUU	N/A	N/A	QC harness passes through fixture, but is not connected to it

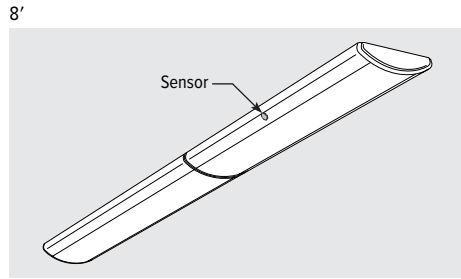
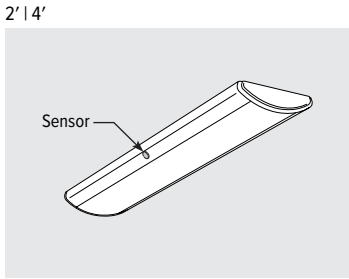
FINISH OPTIONS



For custom color, please specify RAL code or a manufacturer code with description. All custom colors other than RAL require two sample swatches, minimum 1" square.



SENSOR & NODE PLACEMENT DETAILS



AVI-ON BLUETOOTH WIRELESS CONTROL DETAILS

FEATURES

Simple

- Gateway-free distributed control
- Factory pre-commissioning
- Contractor friendly installation
- Occupancy/vacancy/daylight sensing

Scalable

- Virtually unlimited network size
- Spans small offices to large warehouses
- Flexible control strategies

Secure

- Optional cloud connectivity
- UL IoT platinum security rating
- DLC 5.0 compliant

COMMISSIONING & INSTALLATION TOOLS

Avi-on mobile apps provide intuitive, quick installation and commissioning. Pro tools are available to qualified installers. Live commissioning training and on-site or remote support by Avi-on must be ordered separately through Avi-on.



Commissioning Mobile App

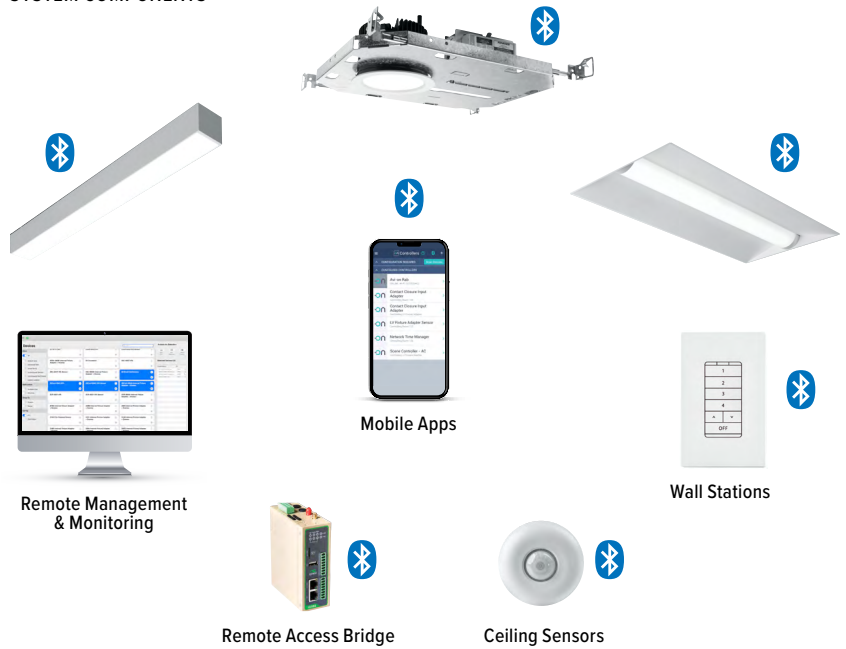


Zone Scanner Web App



Commissioning Pro App

SYSTEM COMPONENTS



The Bluetooth® word mark and logos are registered trademarks owned by Bluetooth SIG, Inc. and any use of such marks by Avi-on is under license. Other trademarks and trade names are those of their respective owners.

ACCESSORIES

WALL STATIONS	
AVI-2401AC	Scene controller - numbered 1-4, 120-277VAC
AVI-2402BAT	Scene controller - numbered 1-4, battery powered
AVI-2401AC-2	Dimmer with presets - percentages, 120-277VAC
AVI-2402BAT-2	Dimmer with presets - percentages, battery powered
AVI-2401AC-3	On/off/dimming, 120-277VAC
AVI-2402BAT-3	On/off/dimming, battery powered

NETWORK	
AVI-RAB-LTE	Remote access bridge
AVI-KIT-NTM	Network time manager with battery backup
CEILING MOUNT SENSORS	
AVI-KIT-SEN-DUCM	PIR motion and ultrasonic sensor kit
AVI-KIT-SEN-ICM	PIR motion and photocell sensor kit

For load controllers and additional accessory info, see hew.com/avi-on

SEE NEXT PAGE FOR ADDITIONAL CONTROL OPTIONS.

ADDITIONAL CONTROL OPTIONS

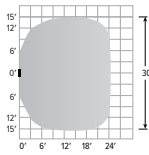
Not available with EM battery in 2' units.

OCCWS-FS-505-PP-___ Wattstopper low voltage ultrasonic motion sensor with power pack. Must specify voltage: 120, 277, or 347V.

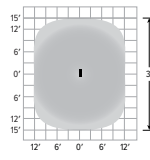
SPECIFICATIONS	
TYPE	Ultrasonic Motion
MOUNTING HEIGHT	8' – 10'
DETECTION ANGLE	360°
TEMPERATURE RANGE	0° to 55°C
RELATIVE HUMIDITY	5 to 95%, non-condensing

SENSOR COVERAGE PATTERNS

8' height: ø27' coverage
20° from vertical



Parallel to floor



SENSOR DETAIL

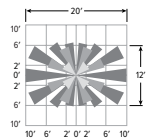
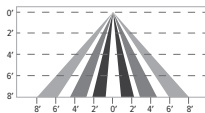


OCCLV-OSF10-IOW-___ Leviton PIR motion sensor. Must specify voltage: 120 or 277. Factory-installed.

SPECIFICATIONS	
TYPE	PIR Motion
MOUNTING HEIGHT	8'
DETECTION ANGLE	360°
TEMPERATURE RANGE	0° to 55°C
RELATIVE HUMIDITY	20% to 90% non-condensing

SENSOR COVERAGE PATTERNS

8' height: ø16' coverage



SENSOR DETAIL



ADDITIONAL DRIVER OPTIONS

Note: Lumen restrictions apply, consult product builder at hew.com/product-builder.

CATALOG NUMBER	DESCRIPTION
DRV	Driver prewired for non-dimming applications
DIM	Dimming driver prewired for 0-10V low voltage applications
DIM1	1% dimming driver prewired for 0-10V low voltage applications
DIM LINE	Line voltage dimming driver (TRIAC and ELV compatible, 120V only)
DIM TRC	Line voltage dimming driver (TRIAC compatible, 120V only)
DA	Driver with 12V auxiliary power
DSR	Sensor-ready driver (D4i DALI-2)
SD40	40% step-dimming driver
SD50	50% step-dimming driver
DALI	DALI dimming driver
LDE1	Lutron Hi-lume 1% EcoSystem dimming LED driver

