

CATALOG #: _____

TYPE: _____

PROJECT: _____



FEATURES

- Deliver scalable, data-driven smart buildings with PoE-enabled fixtures and controls
- IK10 rated for demanding environments
- Heavy-duty housing, die-cast end caps, and impact-resistant lens add strength and durability.
- Tamper-resistant #8 snake eye screws provided to protect against vandals
- Designed for surface, wall, pendant, or vandal-resistant corner mount
- ADA compliant in wall mount applications
- Features easy row mount capability with integral alignment pieces
- Made Right Here® in the USA

SPECIFICATIONS

- HOUSING – Marine grade aluminum. Extruded housing with die-cast end caps.
- SHIELDING – UV stabilized polycarbonate lens, .150” thick with .040” matte white acrylic underlay to minimize pixelation.
- REFLECTIVE SURFACES – 92% minimum average reflective white powder coat on interior components.
- FINISH – Textured matte white polyester TGIC powder coat bonded to phosphate-free, multi-stage pretreated metal. All parts painted after fabrication to facilitate installation, increase efficiency, and inhibit corrosion.
- ELECTRICAL – High-quality mid-power LED board. L70 > 50,000 hours per IES TM-21. Low-voltage DC fixture, to be fed by Class 2 power supply. Tunable White products use LEDs of multiple CCTs and may produce a perceptibly different shade of white from single-CCT products at the same CCT. All CCTs are within 3 MacAdam ellipses.
- MOUNTING – Surface (ceiling or wall). Suspended (hanging hardware required).
- LISTINGS –
 - cCSAus certified as luminaire suitable for dry or damp locations.
 - Suitable for wet location under covered ceiling when specified with WET/CC option.
 - ADA compliant in wall mount applications.
 - IK10 rated
 - Complies with the Buy American Act and other federal regulations. Request certification at hew.com/baa.
- WARRANTY – 5-year limited warranty, see hew.com/warranty.

SYSTEM REQUIREMENTS

- PoE-ready luminaires are connected to building power systems through network integration and require other components for complete PoE lighting system
- For additional PoE info, see hew.com/poe

ORDERING EXAMPLE: AVX - 4 - P53/835 - CPC - OPTIONS - POE PR

SERIES	LENGTH	LUMENS ^[1]	CRI	CCT	SHIELDING ^[2]
AVX	2 2'	2'	8 80	27 2700K	CPC Clear, UV stabilized polycarbonate, .150” thick WPC White, UV stabilized polycarbonate, .150” thick
	4 4'	P24 2,400lm	9 90 ^[4]	30 3000K	
	8 8' ^[3]	4'	P25 2,500lm	35 3500K	
		P53 5,300lm	40 4000K	40 4000K	
		8'	P50 5,000lm	50 5000K	
		P108 10,800lm	TW Tunable white (3000K–5000K)	TW 4000K	
			TW2 Tunable white (2700K-6500K)	TW2 5000K	
				TW2 4000K	
				TW2 5000K	
				TW2 6500K	

OPTIONS ^[5]

- AVX-4 CMB 4', vandal-resistant corner mount ^[7]
- WET/CC Wet location under covered ceiling ^[8]

CONTROL ^[6]

- POE PR Power over Ethernet-ready

MOUNTING (EXAMPLE: AC(Y12)/D48) ^[9]

Prefix	Type	Length
AC(Y12)/	D 1” grid & hardpan	24 24”
	N 9/16” grid	48 48”
	S Slot grid	96 96”

ACCESSORIES

- TPSN-8 TOOL #8, tamper-resistant snake eyes tool. ^[10]

NOTES

- ¹ Static white lumens based on CPC shielding, 80 CRI/3500K CCT. Actual performance may vary +/-5%. See page 2 for FIXTURE PERFORMANCE DATA.
- ² See page 3 for SHIELDING DETAILS.
- ³ Two 4' units end-to-end.
- ⁴ Extended lead times may apply. Consult factory for availability.
- ⁵ See page 2 for FINISH OPTIONS.
- ⁶ For additional PoE connection details, consult factory.
- ⁷ See page 3 for CORNER MOUNT DETAILS.
- ⁸ Not available with AVX-4 CMB corner mount or suspended mounting hardware.
- ⁹ Required with suspended mount fixtures. Must specify low-voltage cord. See page 3 for LOW-VOLTAGE CORD OPTIONS.
- ¹⁰ Tamper-resistant tool must be ordered separately. Please specify quantity required per project.



FIXTURE PERFORMANCE DATA

STATIC WHITE

	LED PACKAGE	DELIVERED LUMENS		WATTAGE	EFFICACY (lm/W)	
		CLEAR (CPC)	WHITE (WPC)		CLEAR (CPC)	WHITE (WPC)
2'	P24	2444	1686	21	115	79
	P25	2518	1737	22	115	80
4'	P53	5319	3670	44	121	84
	P50	5036	3475	41	122	84
8'	P108 ¹	10822	7467	90	121	83

¹ Fixture contains two nodes, one power drop per node required.

TUNABLE WHITE

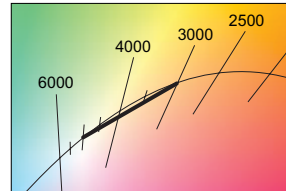
	LED PACKAGE	DELIVERED LUMENS		WATTAGE	EFFICACY (lm/W)	
		CLEAR (CPC)	WHITE (WPC)		CLEAR (CPC)	WHITE (WPC)
2'	P24	2438	1682	24	104	71
	P25	2503	1727	22	112	78
4'	P53	5326	3675	50	108	74
	P50	5006	3454	42	119	82
8'	P108 ¹	10812	7460	101	107	74

MULTIPLIER TABLE

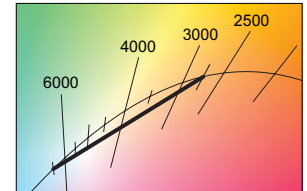
	COLOR TEMPERATURE			
	CCT	STANDARD	TW	TW2
80 CRI	2700K	0.97	-	0.93
	3000K	0.99	0.95	0.95
	3500K	1.00	0.98	0.98
	4000K	1.03	1.00	1.00
	5000K	1.06	0.96	1.02
	6500K	-	-	1.01
90 CRI	2700K	0.80	-	0.93
	3000K	0.82	0.91	0.95
	3500K	0.83	0.96	0.98
	4000K	0.86	1.00	1.00
	5000K	0.89	1.03	1.03
	6500K	-	-	1.02

- Photometrics tested in accordance with IESNA LM-79. Results based on CPC shielding and 25°C ambient temperature. Static white based on 80 CRI/3500K CCT. Tunable white based on 80 CRI/4000K CCT. Actual performance may vary +/-5%.
- Use multiplier table to calculate additional options.

TW

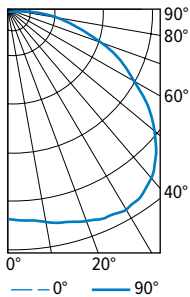


TW2



PHOTOMETRY

AVX-4-P53/835-CPC Total Luminaire Output: 5319 lumens; 44 Watts | Efficacy: 121 lm/W | 80 CRI; 3500K CCT

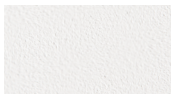


VERTICAL ANGLE	HORIZONTAL ANGLE			ZONAL LUMENS
	0°	45°	90°	
0	1612	1612	1612	
5	1616	1612	1627	154
15	1506	1619	1703	455
25	1314	1578	1770	718
35	1076	1466	1768	902
45	831	1276	1604	956
55	598	1021	1309	872
65	366	732	935	670
75	123	415	557	396
85	11	159	250	159
90	0	73	138	

LUMEN SUMMARY	ZONE	LUMENS	% FIXTURE
		0 - 30	1327
	0 - 40	2229	42
	0 - 60	4057	76
	0 - 90	5282	99
	0 - 180	5319	100

FINISH OPTIONS

WHITE



BLACK



BRONZE



NICKEL



SILVER



ALUM

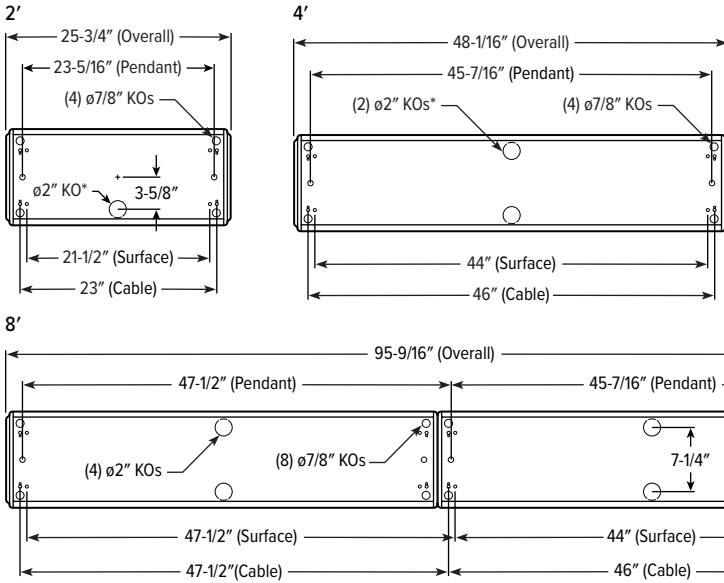


For custom color, please specify RAL code or a manufacturer code with description. All custom colors other than RAL require two sample swatches, minimum 1" square.



FIXTURE DETAILS

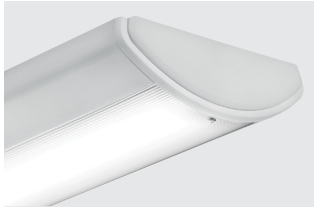
BACKVIEW



- For continuous row applications, subtract 9/16" from dimension "A" for every additional fixture per row.

SHIELDING DETAILS

CPC

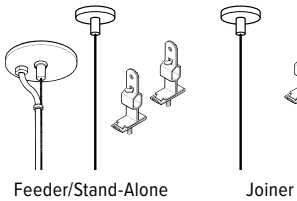


WPC



MOUNTING DETAILS

STANDARD HARDWARE FOR SUSPENDED PRODUCT (Grid and Hardpan)



Notes:

- Fixtures are provided with adjustable length aircraft cables with two-point "Y" connectors and mounting hardware, must specify.
- Electrical supply is brought into the feeder fixture, either as part of a row or as a stand-alone unit. Joiner fixtures complete the row. One power drop per node required.

LOW-VOLTAGE CORD OPTIONS

Must specify low-voltage cord with aircraft cable mounted fixtures.

EXAMPLE: P24/W		
CORD TYPE	LENGTH	COLOR
P PoE	24 24"	/W White
	48 48"	/B Black
	96 96"	

CORNER MOUNT DETAILS

