

CATALOG #: _____

Type: _____

PROJECT: _____

FEATURES

- Deliver scalable, data-driven smart buildings with PoE-enabled fixtures and controls
- Small profile installs inconspicuously in confined spaces
- Delivers uniform, glare-free task lighting for work areas
- Housing keyhole slots and knockouts provide quick and easy installation
- Individual or continuous row mounting
- All-welded construction provides long lasting performance
- Optional anti-microbial white finish available for use in healthcare applications
- Maximize energy savings with efficacies up to 128 lm/W
- Made Right Here® in the USA



ORDERING EXAMPLE: 1SF 4 - P28/835 - AF12125 - OPTIONS - POE PR

ORDERING INFO

SERIES	LENGTH	LUMENS ^[1]	CRI	CCT	SHIELDING
1SF	1 1'	1'	80	30 3000K	DMA Diffuse matte acrylic, .080" thick
	2 2'	P6 600lm		35 3500K	AF12125 Frosted acrylic, pattern #12, .125" thick
	3 3'	2'		40 4000K	
	4 4'	P19 1,900lm			
		3'			
		P19 1,900lm			
		4'			
		P19 1,900lm			
		P28 2,800lm			

OPTIONS ^[2]

AMW Anti-microbial white finish

CONTROL ^[3]

POE PR Power over Ethernet-ready

SPECIFICATIONS

- HOUSING – 20-gauge die-formed, welded C.R.S.
- SHIELDING – Diffuse matte acrylic, .080" thick.
- FINISH – 92% minimum average reflective white polyester powder coat bonded to phosphate-free, multi-stage pretreated metal. All parts painted after fabrication to facilitate installation, increase efficiency, and inhibit corrosion.
- ELECTRICAL – High-quality mid-power LED boards. L85 at 50,000 hours. Low-voltage DC fixture, to be fed by Class 2 power supply.
- MOUNTING – Surface.
- LISTINGS –
 - cCSAus certified as luminaire suitable for dry or damp locations.
 - Complies with the Buy American Act and other federal regulations. Request certification at hew.com/baa.
- WARRANTY – 5-year limited warranty, see hew.com/warranty.

SYSTEM REQUIREMENTS

- PoE-ready luminaires are connected to building power systems through network integration and require other components for complete PoE lighting system
- For additional PoE info, see hew.com/poe

NOTES

¹ Lumen output based on AF12125 shielding, 80 CRI/3500K. Actual performance may vary +/-5%. See page 2 for FIXTURE PERFORMANCE DATA.

² See page 2 for FINISH OPTIONS.

³ For additional PoE connection details, consult factory.



1SF PoE Solid Front Under Cabinet Light

FIXTURE PERFORMANCE DATA

	LED PACKAGE	DELIVERED LUMENS	WATTAGE	EFFICACY (lm/W)
1'	P6	610	6.7	91
2'	P19	1,939	15.2	128
3'	P19	1,939	15.1	128
4'	P19	1,912	14.9	128
	P28	2,820	23.2	122

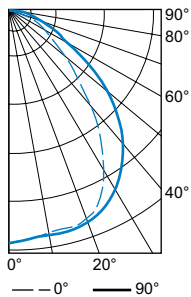
- Photometrics tested in accordance with IESNA LM-79. Results shown are based on 25°C ambient temperature.
- Wattage shown is average for 120V through 277V input.
- Results based on AF12125 shielding, 80 CRI/3500K, actual performance may vary +/-5%
- Use multiplier table to calculate additional options.

MULTIPLIER TABLE

COLOR TEMPERATURE	
CCT	CONVERSION FACTOR
3000K	0.99
3500K	1.00
4000K	1.03

PHOTOMETRY

1SF-4-P28/835-AF12125 Total Luminaire Output: 2820 lumens; 23.2 Watts | Efficacy: 122 lm/W | 80 CRI; 3500K CCT

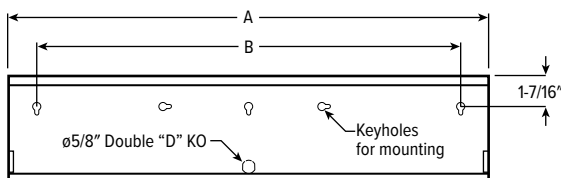


VERTICAL ANGLE	HORIZONTAL ANGLE			ZONAL LUMENS
	0°	45°	90°	
0	1247	1247	1247	118
10	1210	1214	1227	344
20	1195	1207	1214	529
30	1013	1080	1130	595
40	682	822	948	524
50	394	525	693	368
60	213	269	388	204
70	106	119	160	97
80	58	58	58	41
90	19	21	12	0

LUMEN SUMMARY	ZONE	LUMENS	% FIXTURE
	0 - 30	990	35
	0 - 40	1585	56
	0 - 60	2476	88
	0 - 90	2820	100
	0 - 180	2820	100

FIXTURE DETAILS

BACK VIEW



NOMINAL LENGTH	ACTUAL LENGTH (A)	ACTUAL LENGTH (B)
1'	12-1/8"	7-1/2"
2'	22-5/8"	20"
3'	34-3/8"	29"
4'	46-1/4"	38"

Back of housing provided with adequate keyhole slots and knockout for mounting and wiring.

FINISH OPTIONS

WHITE	BLACK	BRONZE	NICKEL	SILVER	ALUM

For custom color, please specify RAL code or a manufacturer code with description. All custom colors other than RAL require two sample swatches, minimum 1" square.

