

LED WRAPS



From the basics to architectural and vandal resistant fixtures, Williams offers a complete line of LED wrap-around solutions.

Available in a variety of mounting types and lumen packages, our wraps can be used in virtually any application.

Providing you with superior lighting products at competitive prices, our entire LED wrap line is made in the USA.

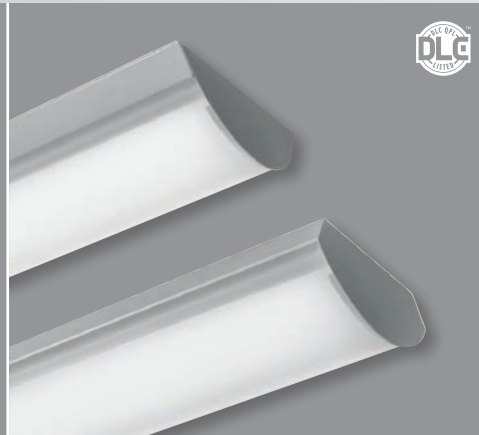


H.E. WILLIAMS, INC.



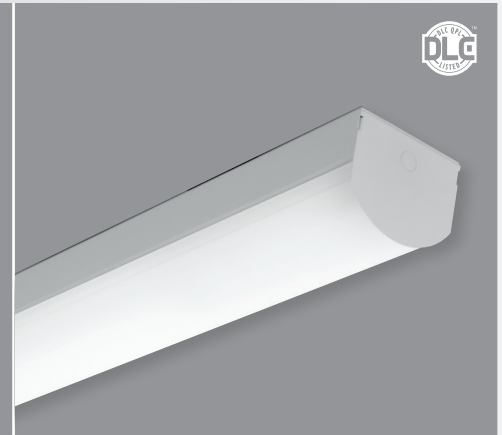
17 & 18

LOW-PROFILE LED WRAP



39 & 39W

SURFACE OR PENDANT LED WRAP



SLF

SURFACE OR WALL MOUNT LED



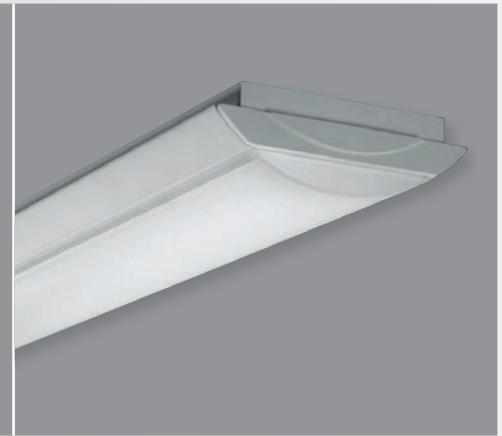
LLMS

ARCHITECTURAL SLIMLINE LED



AVX

ARCHITECTURAL VANDAL LED WRAP



ASM

ARCHITECTURAL LED SURFACE

PRODUCT DETAILS

SERIES	NOMINAL LUMENS	LENGTH			WIDTH	MOUNTING							OCC	EM	TAMPER RESISTANT
		2'	4'	8'		WALL	SURFACE	PENDANT	CABLE	SEMI-RECESSED	CORNER	ROW			
17	2700-11000	•	•	•	10-3/4"		•	•				•		•	
18	9000		•		16-3/4"		•	•				•		•	
39	3000-16800		•	•	10-3/16"		•	•	•			•		•	
39W	3000-16800		•	•	12-1/16"		•	•	•			•		•	
SLF	1300-9000	•	•		5-7/8"	•	•						•	•	•
LLMS	1300-8000	•	•	•	2-5/8"		•		•			•		•	
AVX	2600-20000		•	•	11"	•	•	•	•			•	•	•	•
ASM	2500-9200		•	•	8-1/2"		•	•	•	•		•		•	

