

# Chicago Plenum

## Luminaire Product Guide



A Visible Difference®



# Recessed



## LT Troffer

- Diffuse lens provides smooth illumination
- Low-profile depth for shallow plenum
- ISO 5-9 and IP5X rated for cleanroom applications



## PT Shallow Plenum Troffer

- Grid, hardpan, data center structures or surface mount
- Ultra slim 2-3/8" depth for shallow plenum
- Room-side access



## AT Architectural Troffer

- Recessed or surface mount
- Back-lit curved lens for visual comfort
- Three distinct center styles



## DI Direct/Indirect

- Choice of three diffusers to enhance the space
- Provides soft, uniform illumination
- Lensed door option protects against contaminants



## AHT Architectural High-Output

- Versatile lumen output for a variety of applications
- Diffusers provide comfortable, uniform illumination
- Room-side access



## HET High Efficiency Troffer

- Efficient design delivers smooth illumination
- Room-side access
- Lensed door option protects against contaminants







### AP Edge-lit Arched Panel

- Gently curved design provides fresh, unique visual aesthetic
- Low glare, edge-lit optic
- Seamless design prevents light leak



### RND Round Architectural

- Flat, convex, or concave lens profiles
- Recessed, surface and suspended
- 2', 3' and 4' diameters



### 50 Troffer

- Variety of door frame and shielding options
- Room-side access
- Triple gasketing protects against contaminants



### LPT Low-Profile Troffer

- Reversible door hinges and latches for dual access
- Integral T-bar clips quickly secure fixture
- Deep reinforcement ribs provide added strength



### SQR Square Troffer

- Large-format design in 2', 3' and 4' squares
- Frosted lens provides soft, smooth illumination
- Create unique spaces by combining sizes



### AHT Architectural High-Output

- Versatile lumen output for a variety of applications
- Diffusers provide comfortable, uniform illumination
- Room-side access



### HET High Efficiency Troffer

- Efficient design delivers smooth illumination
- Room-side access
- Lensed door option protects against contaminants



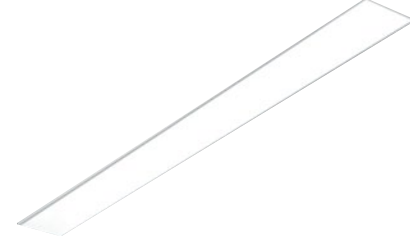


## Continuous



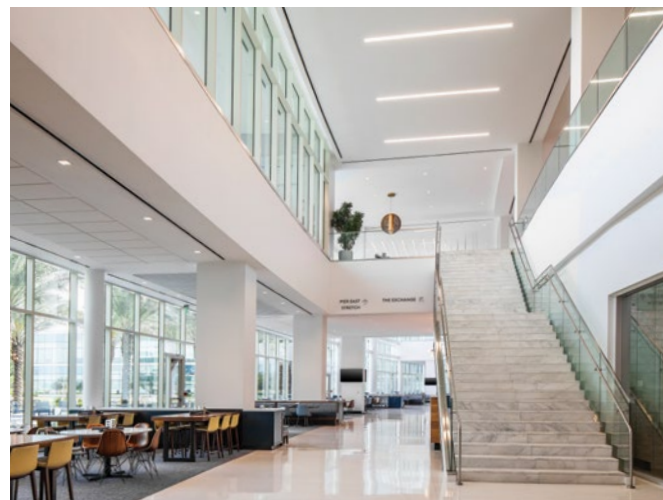
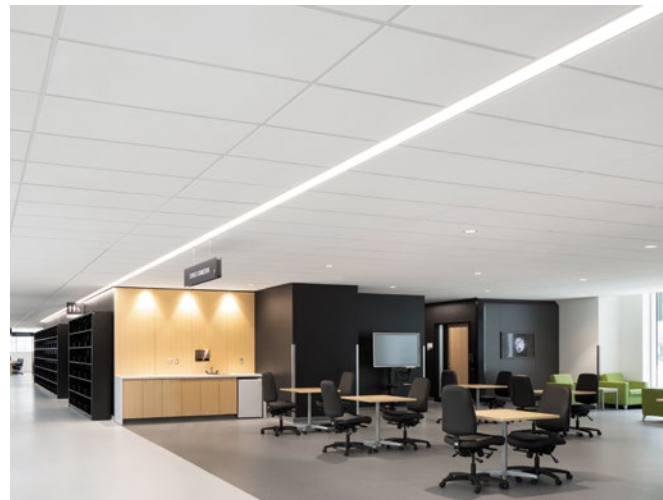
### MX 2 & 4 Inch Ambient

- Flat, glowing edge, drop and regressed lenses
- Suspended, recessed, wall and surface
- Fully illuminated 90° corners
- Specifiable to the inch



### LRX 2, 3, 4 & 5 Inch Linear

- High-performance, seamless illumination at an unbeatable value
- Lift and shift lens for simple installation
- Grid or hardpan ceilings



## Downlights



### 2D 2 Inch Round & Square

- Zero-flange trim options for modern ceiling
- Beam angles ranging from 8° to 70°
- Fixed or adjustable aim



### 4D 4 Inch Round & Square

- Innovative TrimLock® reflector retention
- Flush, regressed and angled die-cast trims
- Shallow plenum and MRI configurations



### 6D 6 Inch Round & Square

- IC-rated, new construction and remodel
- ENERGY STAR® certified, Title 24 | JA8 compliant
- Vandal-resistant and non-conductive shower trim options



### 8D 8 Inch High Output

- High-output illumination for tall ceilings
- Beam angles ranging from 35° to 65°
- Open reflector with 9 finishes



# Medical



## MST MIL-Spec Troffer

- Complies with MIL-STD-461G specifications
- Green circuit enhances visual clarity for surgical team
- IP65 and ISO 5, Class 100 rated



## MDS Medical Surgical Troffer

- Reduces harsh contrast between surgical and preparatory work areas
- Provides auxiliary illumination from the perimeter of the operating room
- Triple gasketing protects against contaminants



## MCT Clean Room Troffer

- IP65 and ISO 5, Class 100 rated,
- NSF/ANSI 2 certified
- Amber and Red narrow spectrum options for scientific and manufacturing requirements



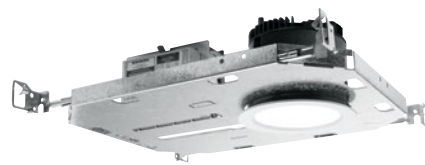
## M4P/M6P 4 & 6 Inch MRI

- Round and square shapes with non-ferrous materials for imaging suites
- Innovative TrimLock® reflector retention
- IP65-rated die-cast trim with easy-to-clean flush lens



## AMD Multi-Function Medical

- Ambient, exam, reading and night light outputs with eight configurations
- 2x4 or split 2x2 fixtures provide flexibility
- Room-side access without tools



## HM4DR 4 Inch Downlight

- Smooth surface trim and lens materials
- Die-cast trim includes flush or regressed lens
- Easily adjust mounting arms below ceiling



## MDB Multi-Function Medical

- Choose between two attractive ambient styles
- Ambient, exam and reading light outputs
- Protect against contaminants with the easy-to-clean, lensed door



## HM6DR 6 Inch Downlight

- IP65 and ISO 5, Class 100 rated
- NSF/ANSI 2 certified
- Innovative TrimLock® reflector retention



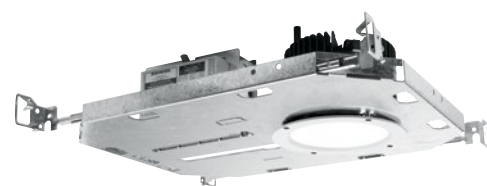


## Vandal-Resistant



### V50 Static Troffer

- Vandal and impact-resistant lens provides added security
- Tamper-resistant screws secure fully gasketed door frame



### V4DR 4.5 Inch Downlight

- Anti-ligature, tamper-resistant design
- IP65-rated die-cast trim
- Easily adjust mounting arms below ceiling



### VDIL Lensed Troffer

- Tamper-resistant screws secure transparent lensed door
- Choice of acrylic or perforated diffusers
- Designed to minimize contaminants



### V6DR 6 Inch Downlight

- Accepted by the New York State Office of Mental Health for use in inpatient facilities
- Easy-to-clean flush lens
- Beam angles ranging from 25° to 55°

## Egress



### EXIT/EL/CHICAGO Edgelit

- UV-stabilized edgelit panel provides consistent, uniform illumination
- Compact, low profile design
- Ceiling, side, wall mount or recessed



### EXIT/EM/CHICAGO Exit & Emergency

- Anti-ligature, tamper-resistant design
- IP65-rated die-cast trim
- Easily adjust mounting arms below ceiling



### EXIT/CHICAGO Exit Sign

- EXIT or STAIR sign illumination
- Optional polycarbonate shield and wireguard provide added protection
- Ceiling, side or wall mount





**H.E. WILLIAMS, INC.**

831 West Fairview Ave | Carthage, MO 64836

417-358-4065

[hew.com](http://hew.com)

REV.03/06/24.JL