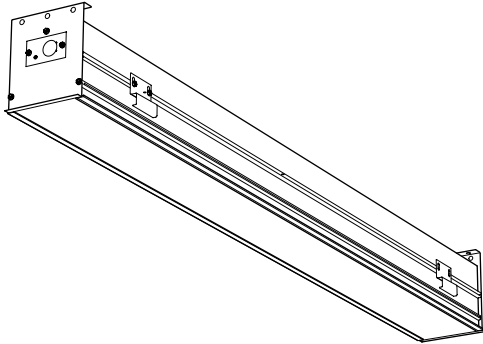
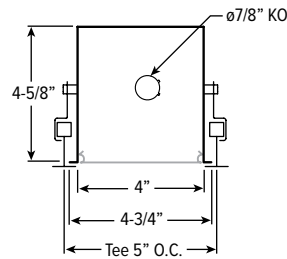


WARNING:

- This product must be installed in accordance with the applicable installation code by a person familiar with the construction and operation of the product and the hazards involved.
- Make sure all electrical power is turned off while installing the fixture.
- This luminaire must be adequately grounded for protection against shock hazards and to assure proper operation.
- Disconnect power before servicing.
- LEDs are ESD (Electro Static Discharge) sensitive devices that can be easily damaged if the proper ESD mitigating steps are not taken.
- LEDs are very sensitive to mechanical damage. Caution must be taken to avoid damage to the LEDs.
- ESD or mechanical damage voids all warranties.



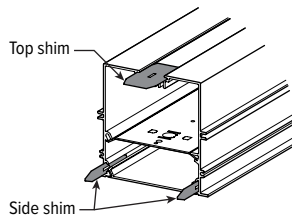
END VIEW



FIXTURE PREPARATION

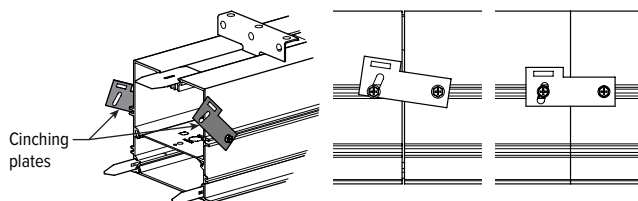
STEP 1: Joiner Fixtures (as required) for row-mount application only

- Install alignment shims into leading end of joiner fixture housing.
- Insert shims approximately 1/2" and bend slightly outward to create binding at steps B and C.
- Continue to insert the side shims until the slot reaches the fixture housing.
- Continue to insert the top shim until the slot is only half visible.



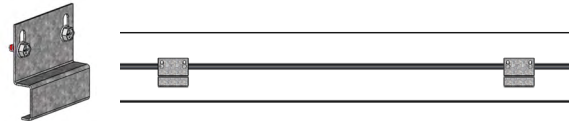
STEP 2: Feeder & Joiner Fixtures (as required) for row-mount application only

- Install cinching plates 1/2" from ends of mating fixture housings with #8 x 1/4" long screws provided. Hand tighten screws. DO NOT Overtighten.



STEP 3: All Fixtures

- Install earthquake clips with #8 x 1/4" long screws provided. Two (2) clips per side of housing. DO NOT TIGHTEN SCREWS. Leave loose until fixture is installed in grid ceiling.



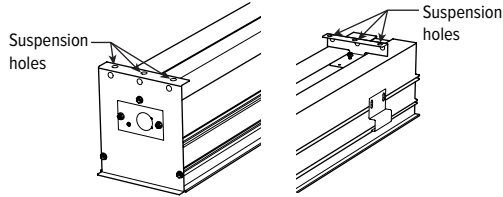
MX4RG

INSTALLATION INSTRUCTIONS

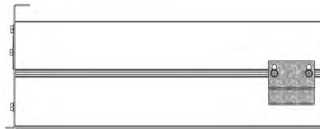
FIXTURE MOUNTING

STEP 1: Install the first fixture (stand-alone fixture or feeder fixture) in row-mount application

A. Raise the fixture into position and secure using the suspension holes for wire tie or 1/4-20 rod.

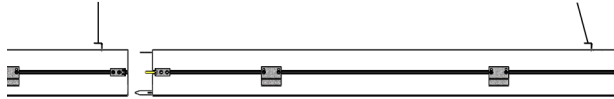


B. Hand tighten earthquake clips to T-grid. DO NOT OVERTIGHTEN.



STEP 2: Install joiner fixture(s) (as required) for row-mount application

A. Hang far end of joiner fixture and move the joining end into alignment with previous fixture.



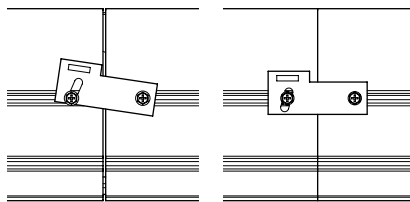
B. Make electrical connections between fixtures.



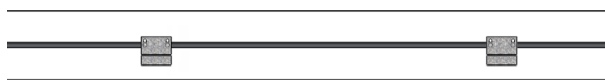
NOTE: 14ga tapkit provided with all (MF) Mid-Feeder fixture types to be installed on site. Conduit access hole in fixture housing to be located and drilled on site.

STEP 1: Tighten cinching plates.

A. Mate joiner fixture to previous installed fixture and tighten cinching screw into cage nut in mating cinching plates. Tighten until connection is firm.



B. Hand tighten earthquake clips. DO NOT OVERTIGHTEN.



C. Continue with remaining joiner fixtures as required until row is complete.

NOTE: Be sure to install the end plate assembly supplied with the feeder fixture onto the end of the final joiner fixture.

INSTALL LENSES

STEP 1: Insert one side of the lens into one side of the fixture housing.

STEP 2: Push the corner of the opposite side of the lens into place.

STEP 3: Continue pushing along the housing until the entire lens is installed.

A. Cut final Row-Mount lens to length as required.

B. To remove the lens, pry out starting with the 4" wide end.

