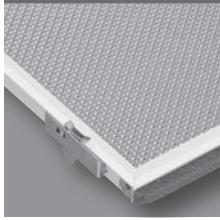
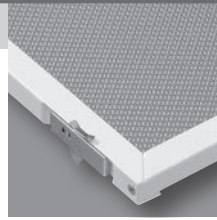


Troffer Door Options

**REGRESSED ALUMINUM DOOR FRAME**

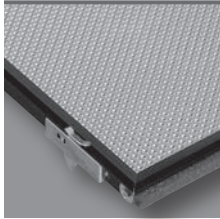
For all luminaires with an aluminum door frame. For regressed door frame, enter "R" in catalog number.
Example: 50G-S24-332-**RA**12125

**STEEL DOOR FRAME**

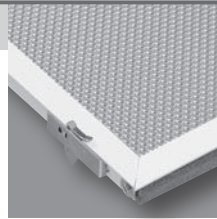
Specify with Williams' Series 11, 12, 15, 16 and 50 in 1'x4', 2'x2', and 2'x4' sizes. For a 20-gauge flat steel door, enter "S" in the catalog number.

Example: 50G-S24-332-**SA**12125

Note: Non-air handling/return fixtures only.

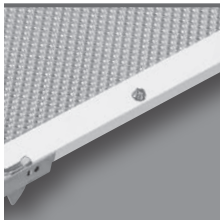
**BLACK DOOR FRAME**

For all luminaires utilizing a door frame. For black door frame, enter "B" in catalog number.
Example: 50G-S24-332-**RBA**12125

**FLAT ALUMINUM DOOR FRAME**

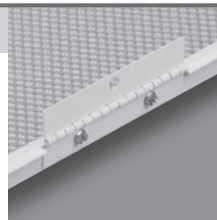
For all luminaires equipped with an aluminum door frame. For flat aluminum door frame, enter "F" in the catalog number.

Example: 50G-S24-332-**FA**12125

**TAMPER-RESISTANT DOOR FRAME**

For use with all static luminaires equipped with a flat aluminum or steel door frame. For two tamper-resistant screws on latch side of door frame, specify "TP" as an option in the catalog number.

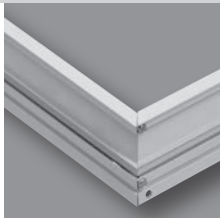
Example: 50G-S24-332-FA12125-**TP**-EB2/1-120

**PIANO HINGE DOOR FRAME**

For all luminaires equipped with a full aluminum door frame. For two 2-3/4" piano-type hinges in place of standard "T" hinges, add suffix "-P/H DOOR".

Example: 50G-S24-332-RA12125-**P/H DOOR**

Grid Riser



The Grid Riser decorative trim system elevates the grid troffer 2" above the ceiling plane for a cove or skylight appearance. Compatible with all Williams NEMA Type "G" luminaires, the Grid Riser easily fits into the ceiling system where the luminaire is positioned into the top of the riser. The top edge of the riser extends around the entire perimeter of the luminaire. Extruded .080" aluminum construction. Available in choice of colors and sizes—consult factory for special orders.

EXAMPLE

2GR 2 4 W E

▼ ▼ ▼ ▼ ▼

SERIES NOM. NOM. FINISH MTG.

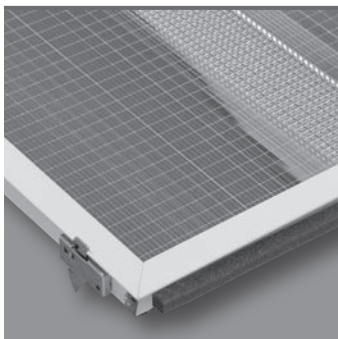
 W. L.

MOUNTING

Must specify if installing standalone S or E (does not apply to 2x2 fixtures)

E End to end
S Side by side

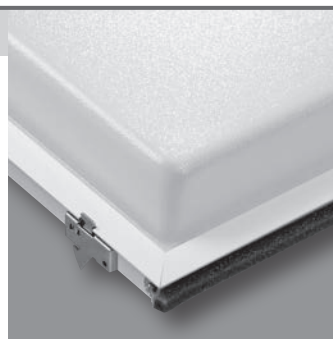
Optional Shielding

**KSH-34RF**

Clear acrylic directional lens, .150" thick with radio suppression grid.

Example:

MDS-S24-632-**KSH-34RF**-EB3/3-120

**DA**

Dished (drop) white acrylic, 1-1/2" deep, .080" nominal thickness, 15° draft angle. Available in 1' x 4', 2' x 2', and 2' x 4' only.

Example:

50G-S24-332-**SDA**-EB3-UNV

