

Reflector Colors

For an added touch of distinction you may choose a reflector color that will coordinate with the colors of your building's interior and enhance the color characteristics of the lamp source.

Warm reflector colors contribute a warm tone to the illumination—ideal for compact fluorescent sources. Baffles and darker colors diminish aperture brightness.



CG
Champagne Gold



CS
Clear Semi-Specular



GD
Gold



PW
Pewter



SG
Satin Glow



SPC
Clear Specular



STR
Straw



WT
Wheat

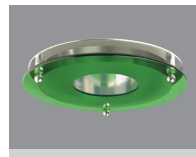
Luminous Glass/Acrylic

Luminous glass/acrylic is available in Clear, Green, Red, and Blue. Color must be specified.

¹ Shown with clear LD. Must be specified with LD, LDO, or LR options.



LD (glass)
LAD (acrylic)
Luminous Disk



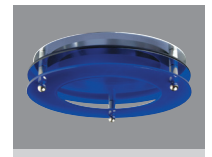
LDO (glass)
LADO (acrylic)
Luminous Disk open



LR (glass)
LAR (acrylic)
Luminous Ring



PFS/___¹ (glass)
Perforated Shield

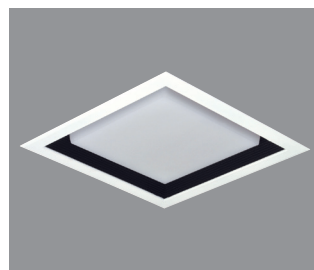


LR2 (glass)
LAR2 (acrylic)
Two Luminous Rings

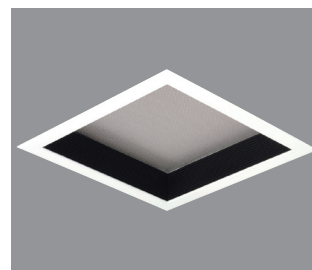
Trims



DAL
Drop Acrylic Lens



DO
Drop Opal Lens (shown with BS)



BS
Baffled Splay (shown with CPG)



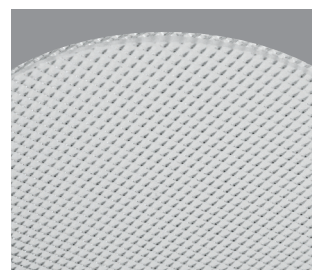
MWT
Matte White Trim (shown with CS)



AC
Accent Cone (shown with CPG)



MB
Micro-Baffle (shown with CPG)



CPG
Clear Prismatic Tempered Glass Lens



FF
Fresnel Glass Lens

