

CATALOG #: \_\_\_\_\_

TYPE: \_\_\_\_\_

PROJECT: \_\_\_\_\_

## FEATURES

- Low-profile wrap-around provides uniform downward light distribution and subtle side illumination
- Shallow depth provides low-profile appearance
- Diffuser is secured continuously along luminaire sides
- Mounts easily as a single fixture or in continuous row installations
- Wireway is accessible without the use of tools
- Maximize energy savings with efficacies up to 141 lm/W
- Available on QuickShip
- Made Right Here® in the USA

## SPECIFICATIONS

- HOUSING** – 20-gauge die-formed C.R.S. End plates constructed of 19-gauge die-formed C.R.S.
- SHIELDING** – Frosted prismatic acrylic diffuser with 15% DR additive, .100" nominal thickness. Prismatic bottom and continuous wrap sides.
- FINISH** – 92% minimum average reflective white polyester powder coat bonded to phosphate-free, multi-stage pretreated metal. All parts painted after fabrication to facilitate installation, increase efficiency, and inhibit corrosion.
- ELECTRICAL** – High quality mid-power LED boards. L70 >50,000 hours.
- MOUNTING** – Surface or suspended.
- LISTINGS** –
  - cCSAus certified as luminaire suitable for dry or damp locations.
  - DesignLights Consortium qualified product. Not all versions of this product may be DLC qualified, see the DLC Qualified Products List at [www.designlights.org/QPL](http://www.designlights.org/QPL)
- WARRANTY** – 5-year limited warranty, see [hew.com/warranty](http://hew.com/warranty).

## ORDERING EXAMPLE: 17 - 4 - L55/835 - AF - OPTIONS - DIM - UNV

### ORDERING INFO

SERIES	LENGTH	LUMENS <sup>[1]</sup>	CRI	CCT	SHIELDING
17	2 2'	2'	8 80	30 3000K	AF Frosted prismatic acrylic diffuser
	4 4'	L27 2,700lm	9 90 <sup>[2]</sup>	35 3500K	
	8 8'	4'	L55 5,500lm	40 4000K	
		8"	L110 11,000lm		

### OPTIONS <sup>[3]</sup>

<b>EM/10W</b>	10-watt emergency battery
<b>GAT</b>	T-bar fastener for 320 ceiling spacer
<b>SS-12</b>	Single stem & canopy, 12"
<b>SWS-12</b>	Stem & swivel canopy, 12"
<b>VBY</b>	(2) Y-hangers
<b>VBY-2</b>	(2) Y-hangers and (2) 2' chains

### CONTROL <sup>[4]</sup>

<b>DIM</b>	Dimming driver
<b>DRV</b>	Non-dimming driver

### VOLTAGE

<b>120</b>	120V
<b>277</b>	277V
<b>UNV</b>	120-277V

### QUICKSHIP

17-4-L55/835-AF-QS-DIM-UNV



## NOTES

<sup>1</sup> Lumen output based on 3500 CCT. Actual lumens may vary +/-5%, see page 2 for FIXTURE PERFORMANCE DATA.

<sup>2</sup> Extended lead times may apply. Consult factory for availability.

<sup>3</sup> See page 3 for FINISH OPTIONS. See page 3 for QUICK CONNECT OPTIONS. See page 3 for MOUNTING ACCESSORIES DETAILS.

<sup>4</sup> See page 2 for ADDITIONAL CONTROL OPTIONS.



# 17 LED Narrow Low-Profile Wrap

## FIXTURE PERFORMANCE DATA

LED PACKAGE	DELIVERED LUMENS	WATTAGE	EFFICACY (lm/W)	
2'	L27	2915	21.3	137.0
4'	L55	5947	42.3	140.6
8'	L110	11065	78.3	141.2

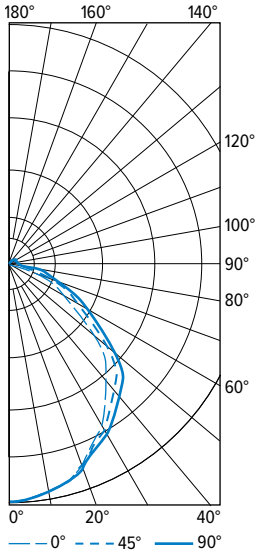
- Photometrics tested in accordance with IESNA LM-79. Results shown are based on 25°C ambient temperature.
- Wattage shown is average for 120V through 277V input.
- Results based on 3500K, 80 CRI, actual lumens may vary +/-5%
- Use multiplier table to calculate additional options.

## MULTIPLIER TABLE

		COLOR TEMPERATURE	
		CCT	CONVERSION FACTOR
80 CRI	3000K	0.99	
	3500K	1.00	
	4000K	1.03	
90 CRI	3000K	0.82	
	3500K	0.83	
	4000K	0.86	

## PHOTOMETRY

17-4-L55/835-AF-DRV-UNV Total Luminaire Output: 5947 lumens; 42.3 Watts | Efficacy: 140.6 lm/W | 82 CRI; 3500K CCT



VERTICAL ANGLE	HORIZONTAL ANGLE			ZONAL LUMENS
	0°	45°	90°	
0	2131	2131	2131	
5	2155	2111	2102	201
15	2072	2032	2022	575
25	1900	1867	1872	865
35	1635	1622	1658	1023
45	1275	1310	1361	1011
55	869	952	1023	846
65	513	618	692	605
75	249	342	421	362
85	51	130	201	155
90	0	72	137	
95	0	70	130	75
105	0	67	113	66
115	0	62	101	57
125	0	54	85	45
135	0	44	66	31
145	0	34	53	18
155	0	27	34	9
165	0	0	27	3
175	0	0	0	0
180	0	0	0	

LUMEN SUMMARY	ZONE	LUMENS	% FIXTURE
	0 - 30	1641	28
	0 - 40	2665	45
	0 - 60	4521	76
	0 - 90	5643	95
	90 - 120	198	3
	90 - 150	292	5
	90 - 180	305	5
	0 - 180	5947	100

## ADDITIONAL CONTROL OPTIONS

Note: Lumen restrictions apply, consult product builder at [hew.com/product-builder](http://hew.com/product-builder).

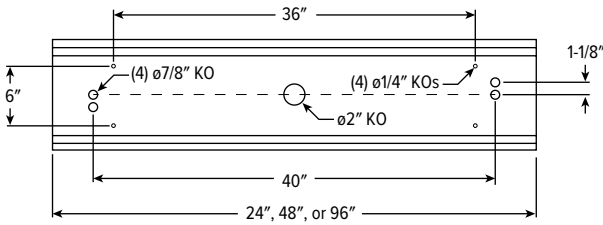
CATALOG NUMBER	DESCRIPTION
DRV	Driver prewired for non-dimming applications
DIM	Dimming driver prewired for 0-10V low voltage applications
DIM1	1% dimming driver prewired for 0-10V low voltage applications
DIM LINE	Line voltage dimming driver (Must specify 120V or 277V only)
SD40	40% step-dimming driver
SD50	50% step-dimming driver
DALI	DALI dimming driver
LTE LINE	Lutron Hi-lume 1% 2-wire dimming driver forward phase line voltage controls (120V only)
LDE1	Lutron Hi-lume 1% EcoSystem dimming LED driver
LDE5	Lutron 5-Series 5% EcoSystem dimming LED driver
ELDO SOLOB	EldoLED Solodrive, 0.1% dimming driver for 0-10V controls
ELDO SOLOB DALI	EldoLED Solodrive, 0.1% dimming driver for DALI controls
ELDO ECO1	EldoLED Ecodrive, 1% dimming driver for 0-10V controls
ELDO ECO1 DALI	EldoLED Ecodrive, 1% dimming driver for DALI controls



# 17 LED Narrow Low-Profile Wrap

## FIXTURE DETAILS

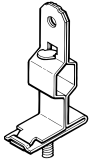
### BACKVIEW



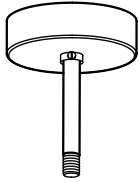
Note: Midsection punching for 4' and 8' units only. 8' unit consists of duplicate 4' unit punching.

## MOUNTING ACCESSORIES DETAILS

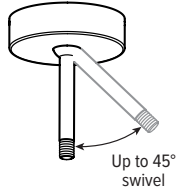
### GAT FASTENER



### SINGLE STEM & CANOPY



### STEM & SWIVEL CANOPY



### VBY HANGER



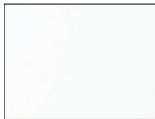
## QUICK CONNECT OPTIONS

Note: Quick connect wiring required for row mounting. Not available in 2' and 3' fixtures.

DESIGNATION	NUMBER OF WIRES (EXCLUDING GROUND)	WIRE COLORS	WIRE COLOR/POWER SUPPLY FACTORY CONNECTIONS	TYPICAL USE
C2B	3	White, Black, Red	White, Black	Alternating Circuits
C2BR	3	White, Black, Red	White, Black, Red	ON/OFF Switching (DRV) or Line Voltage dimming (DIM LINE) when equipped w/EM Power Supply (EM/10W)
C2R	3	White, Black, Red	White, Red	Alternating Circuits
C2BW/RV	5	White, Black, Red, Gray, Green	White, Black/Red, Gray	0-10V 4-wire Low Voltage Dimming (DIM)

## FINISH OPTIONS

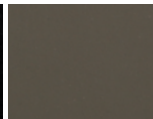
### WHITE



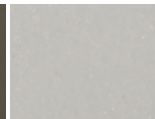
### BLACK



### BRONZE



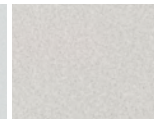
### NICKEL



### SILVER



### ALUMINUM



For custom color, please specify RAL code or a manufacturer code with description. All custom colors other than RAL require two sample swatches, minimum 1" square.

