

# SOLID FRONT UNDER CABINET LIGHT

# 1SF

## LED

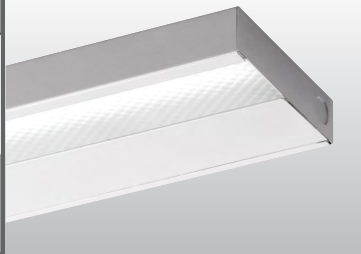
CATALOG #: \_\_\_\_\_ TYPE: \_\_\_\_\_

PROJECT: \_\_\_\_\_

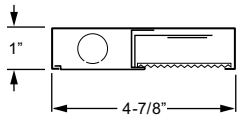
NOTES: \_\_\_\_\_

**EXAMPLE** **1SF - 4 - L24/835 - AF12125 - OPTIONS - DRV - UNV**

SERIES      NOMINAL LENGTH      LUMEN PACKAGE      CRI & CCT      SHIELDING      OPTIONS      DRIVER      VOLTAGE



### CROSS SECTION



### ORDERING INFORMATION

**SERIES**  
**1SF** Solid Front Under Cabinet Light

**NOMINAL LENGTH**

1	1'
2	2'
3	3'
4	4'

**LED PACKAGE**

EXAMPLE: L24/840			AVERAGE SYSTEM WATTAGE
LUMEN PACKAGE	NOMINAL LUMENS	MINIMUM CRI & CCT	
1'			
<b>L6</b>	600	<b>830</b> = 82 CRI, 3000K <b>835</b> = 82 CRI, 3500K <b>840</b> = 82 CRI, 4000K	8
2'			
<b>L12</b>	1,200		14
3'			
<b>L18</b>	1,800		21
4'			
<b>L24</b>	2,400		29

Nominal lumen output based on 3500 CCT. Actual lumens may vary +/-5%, see individual photometric reports.

**SHIELDING**

**DMA** Diffuse matte acrylic, .080" thick  
**AF12125** Frosted acrylic, pattern #12, .125" thick

**OPTIONS**

Not available with EM option.  
 See back for details.

**GCO** Grounded convenience outlet (120V only; not available with 1' fixture; cannot be used with occupancy sensor in 2' fixture)

**C&P/120** 6-1/2' cord and plug, NEMA 5-15P (120V only)

**WRS/120** White rocker switch (120V only)

**AMW** Anti-microbial white finish

**OCCUPANCY SENSOR**  
 Factory-installed, passive infrared sensor (120V or 277V only).  
**OCCLV OSF10-10W** Occupancy sensor (not available with 1' fixture)

**DRIVER**

**DRV** Driver prewired for non-dimming applications  
**DIM** Dimming driver prewired for 0-10V low voltage applications

**VOLTAGE**

**120** 120V  
**277** 277V  
**UNV** 120-277V

### FEATURES

- ▶ Small profile allows inconspicuous placement in confined spaces.
- ▶ Provides uniform, glare-free task lighting.
- ▶ Housing keyhole slots and knockouts provide quick and easy installation.
- ▶ Individual or continuous row mounting.
- ▶ All-welded construction provides long lasting performance.
- ▶ Optional anti-microbial white finish available for use in healthcare applications.
- ▶ This fixture is proudly made in the USA.



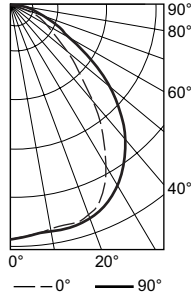
### SPECIFICATIONS

**Housing** – 20-gauge die-formed, welded C.R.S.  
**Shielding** – Diffuse matte acrylic, .080" thick  
**Finish** – 92% minimum average reflective white polyester powder coat bonded to phosphate-free, multi-stage pretreated metal. All parts painted after fabrication to facilitate installation, increase efficiency, and inhibit corrosion.  
**Electrical** – High quality mid-power LED board(s). L85 at 50,000 hours. 25°C maximum ambient operating temperature.  
**Mounting** – Surface.  
**Labels** – cCSAus certified as luminaire suitable for dry or damp locations.  
**Warranty** – 5-year limited warranty, see [hew.com/warranty](http://hew.com/warranty).

**IMPORTANT:**  
 Electrostatic sensitive unit. Observe precautions when handling.

### PHOTOMETRY

**TEST REPORT INFORMATION**  
 ▶ Date: 08/07/14  
 ▶ Lamp Type: LED  
 ▶ **Rated Lumens: 2424**  
 ▶ **Watts: 29**  
 ▶ **Lumens Per Watt: 83.6**  
 ▶ **CRI: 82**  
 ▶ **CCT: 3500K**



### CANDLEPOWER DISTRIBUTION

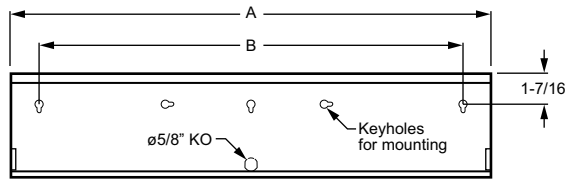
Vertical Angle	Horizontal Angle			Zonal Lumens
	0°	45°	90°	
0°	1079.	1079.	1079.	101.8
10°	1047.	1051.	1062.	101.8
20°	1034.	1045.	1051.	297.3
30°	876.	935.	978.	457.5
40°	590.	712.	821.	515.4
50°	341.	454.	599.	453.2
60°	184.	232.	336.	318.3
70°	92.	103.	138.	176.9
80°	50.	50.	50.	84.3
90°	17.	18.	10.	35.8

### LUMEN SUMMARY

Zone	Lumens	% Fixture
0° - 30°	857.	35.1
0° - 40°	1372.	56.2
0° - 60°	2144.	87.8
0° - 90°	2440.	100.0
<b>Total Luminaire:</b>		
0° - 180°	2440.	100.0
IES Spacing Criteria: End = 1.2 Diagonal = 1.3 Across = 1.3		

### FIXTURE DETAILS

#### BACK VIEW



Back of housing provided with adequate keyhole slots and knockout for mounting and wiring.

NOMINAL LENGTH	DIMENSION	
	A	B
1'	12-1/8"	7-1/2"
2'	22-5/8"	20"
3'	34-3/8"	29"
4'	46-1/4"	38"

