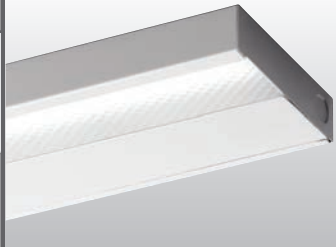


SOLID FRONT UNDER CABINET LIGHT

1SF

PoE



FEATURES

- ▶ Williams turn-key Power over Ethernet (PoE) solution provides plug-and-play networked lighting and control.
- ▶ Efficacies up to 124 lm/W
- ▶ Small profile allows inconspicuous placement in confined spaces.
- ▶ Provides uniform, glare-free task lighting.
- ▶ Housing keyhole slots and knockouts provide quick and easy installation.
- ▶ Individual or continuous row mounting.
- ▶ All-welded construction provides long lasting performance.
- ▶ Optional anti-microbial white finish available for use in healthcare applications.
- ▶ This fixture is proudly made in the USA.

SYSTEM REQUIREMENTS

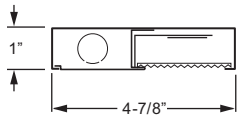
- Lighting system (site software)
- Gateway or alternate server (runs software)
- PoE switches or Ethernet switches and mid-span power injectors
- See hew.com/poe for details

CATALOG #:	TYPE:
PROJECT:	NOTES:

EXAMPLE **1SF - 4 - P28/835 - AF12125 - OPTIONS - POE N**

SERIES NOMINAL LENGTH LUMEN PACKAGE CRI & CCT SHIELDING OPTIONS/ACCESSORIES CONTROL

CROSS SECTION



ORDERING INFORMATION

SERIES
1SF Solid Front Under Cabinet Light – PoE

NOMINAL LENGTH	
1	1'
2	2'
3	3'
4	4'

LED PACKAGE			
EXAMPLE: P28/835			
LUMEN PACKAGE	NOMINAL LUMENS	MINIMUM CRI & CCT	WATTAGE
1'		830 = 82 CRI, 3000K 835 = 82 CRI, 3500K 840 = 82 CRI, 4000K	
P6	60		8
2'			
P19	1,900		16
3'			
P19	1,900		16
4'			
P19	1,900		16
P28	2,800	25	

Nominal lumen output based on 3500 CCT. Actual lumens may vary +/-5%, see fixture performance data.

SHIELDING
DMA Diffuse matte acrylic, .080" thick
AF12125 Frosted acrylic, pattern #12, .125" thick

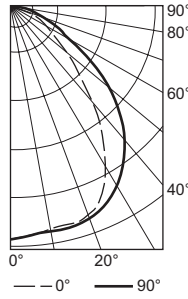
OPTIONS
AMW Anti-microbial white finish

ACCESSORIES
 See hew.com/poe for compatible sensors & switches

CONTROL
 For additional PoE info, see hew.com/poe
 Node requires remote mounting, see back for details.
POE N Power over Ethernet network node
POE D Power over Ethernet device node

PHOTOMETRY

1SF-4-P28/835-AF12125 Total Luminaire Output: 2821 lumens; 25 Watts
 Efficacy: 113 lm/W | 82 CRI; 3500K CCT | IES Spacing Criteria: End: 1.2, Across: 1.3, Diagonal: 1.3



CANDLEPOWER DISTRIBUTION	Vertical Angle	Horizontal Angle			Zonal Lumens
		0°	45°	90°	
	0	1252	1252	1251	
5	1233	1236	1242	118	
15	1207	1216	1226	345	
25	1108	1148	1177	529	
35	851	955	1043	595	
45	540	676	824	523	
55	304	398	542	368	
65	160	194	275	204	
75	83	89	109	98	
85	39	40	35	41	
90	19	21	12		

LUMEN SUMMARY	Zone	Lumens	% Fixture
	0 - 30	992	35
	0 - 40	1587	56
	0 - 60	2478	88
	0 - 90	2821	100
	0 - 180	2821	100

SPECIFICATIONS

Housing – 20-gauge die-formed, welded C.R.S.

Shielding – Diffuse matte acrylic, .080" thick

Finish – 92% minimum average reflective white polyester powder coat bonded to phosphate-free, multi-stage pretreated metal. All parts painted after fabrication to facilitate installation, increase efficiency, and inhibit corrosion.

Electrical – High quality mid-power LED board(s). L85 at 50,000 hours. Low-voltage DC fixture, to be fed by Class 2 power supply.

Mounting – Surface.

Labels – cCSAus certified as luminaire suitable for dry or damp locations.

Warranty – 5-year limited warranty, see hew.com/warranty.

IMPORTANT:

Electrostatic sensitive unit. Observe precautions when handling.

FIXTURE PERFORMANCE DATA

LED PACKAGE	NOMINAL LUMENS	WATTAGE	EFFICACY (lm/W)
1'			
P6/835	606	5.6	108.3
2'			
P19/835	1929	16	120.6
3'			
P19/835	1929	16	120.6
4'			
P19/835	1929	16	120.6
P28/835	2830	25	113.2

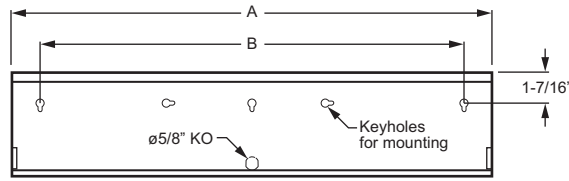
MULTIPLIER TABLE

COLOR TEMPERATURE	
CCT/CRI	CONVERSION FACTOR
3000K/80CRI	0.99
3500K/80CRI	1.00
4000K/80CRI	1.03

- Photometrics tested in accordance with IESNA LM-79. Results shown are based on 25°C ambient temperature.
- Wattage shown is average for 120V through 277V input.
- Results based on 3500K, 80 CRI, actual lumens may vary +/-5%
- Use multiplier table to calculate additional options.

FIXTURE DETAILS

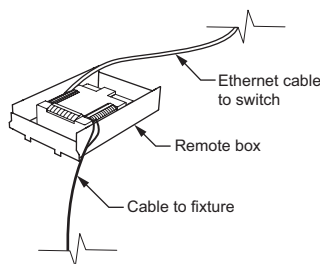
BACK VIEW



Back of housing provided with adequate keyhole slots and knockout for mounting and wiring.

NOMINAL LENGTH	DIMENSION	
	A	B
1'	12-1/8"	7-1/2"
2'	22-5/8"	20"
3'	34-3/8"	29"
4'	46-1/4"	38"

REMOTE MOUNT NODE DETAILS



Includes 2' plenum rated 18ga. solid cable. Remote box can be installed in:

- Above ceiling grid
- Remote closet (within 100ft)
- Surface below ceiling

See [Technical Info](#) for dimension details.