

4.5" ROUND DOWNLIGHT – VERTICAL LAMP

PV45

CFL



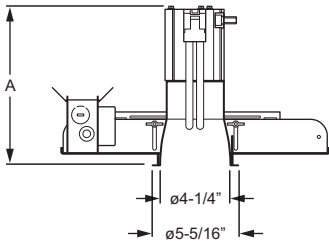
CATALOG #:	TYPE:
PROJECT:	NOTES:

EXAMPLE

PV45 - 1 18Q - CS - OPTIONS - EB1 - UNV

SERIES NUMBER OF LAMPS WATTAGE/TYPE REFLECTOR FINISH OPTIONS BALLAST TYPE VOLTAGE

CROSS SECTION



Wattage/Type	Dim. A
13Q	8-5/16"
18Q	8-13/16"
26Q	9-13/16"
26T	8-11/16"
32T	8-7/8"

ORDERING INFORMATION

SERIES

PV45 4.5" Round Downlight–Vertical Lamp

LAMP OPTIONS

# OF LAMPS	WATTAGE/TYPE
1	13Q, 18Q, 26T, or 32T ¹

¹ 32T lamp option is UL listed (not UL/CUL).

REFLECTOR FINISH

CS Clear semi-specular (standard)
SPC Clear specular
CG Champagne gold
GD Gold
PW Pewter
SG Satin-glow
STR Straw
WH Painted white reflector, textured
WT Wheat

OPTIONS

For EM and EM/ITS ballast options (120V or 277V only, must specify voltage), see [Technical Info](#). (EM/ITS option is not available with CP or YOKE options.)

F Fuse (must specify voltage)
MWT Matte white trim
MB Micro-baffle
YOKE Yoke mount reflector (not available with EM/ITS option)
CP Chicago Plenum (CCEA) (not available with EM/ITS option)

OPTIONS (Continued)

AC/CGS Accent cone with clear glass lens (acrylic or polycarbonate lens options also available)
AC/CPG Accent cone with clear prismatic tempered glass lens
MB/CGS Micro-baffle with clear glass lens (acrylic or polycarbonate lens options also available)
MB/CPG Micro-baffle with clear prismatic tempered glass lens
LD Luminous disk
LDO Luminous disk open
LR Luminous ring

BALLAST TYPE

EB1 1-lamp electronic ballast
EBD1*__ 1-lamp electronic dimming ballast (must specify 120V or 277V only; must specify manufacturer, see [Technical Info](#) for dimming ballast options)

VOLTAGE

120 120V
277 277V
UNV 120-277V

FEATURES

- ▶ Self-flanged aluminum reflector prevents light leaks and is available in assorted colors.
- ▶ Finned, extruded aluminum heat sink socket housing dissipates heat for cooler operation.
- ▶ Sturdy one-piece pan construction.
- ▶ Adjustable hanger brackets with bar hangers standard.
- ▶ Easy-access, 14-gauge galvanized steel junction box with two snap-on covers.
- ▶ This fixture is proudly made in the USA.



CFL

PHOTOMETRY INFORMATION

Catalog #: **PV45-118Q-120-EB**

SPECIFICATIONS

Housing – 20-gauge, die-formed, galvanized steel pan/plaster frame.

Reflector – Low-iridescent aluminum. Clear semi-specular (CS) finish standard.

Electrical – Electronic ballast. Prewired at factory for easy field installation.

Mounting – Recessed. Pan size: 12" x 16-1/4" Ceiling cutout: ø4-3/4"

Labels –

- UL/CUL listed for through-branch circuit wiring and dry or damp locations (32T lamp option is UL listed, not UL/CUL).
- UL/CUL listed for wet location under covered ceiling when specified with ___/CGS or ___/CPG option.
- City of Chicago Environmental Air approved when specified with CP option.

Warranty – 5-year limited warranty, see hew.com/warranty.

TEST REPORT INFORMATION

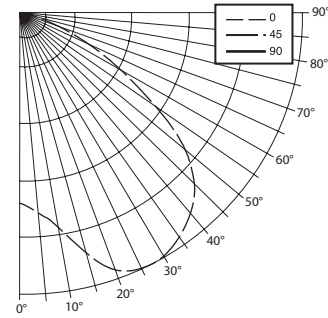
- Test Report #: 10388.0
- Date: 08/30/99
- Lamp Type: CFQ18W/G24q/35
- Lamp Quantity: 1
- Rated Lumens: 1250.

DESCRIPTION

- 1/18W Quad PL Compact Fluorescent
- 4.5" Diameter Recessed Luminaire
- Low-Iridescent Semi-Specular Reflector with Open Bottom

CANDLEPOWER DISTRIBUTION

Vertical Angle	Average Candela	Zonal Lumens
0°	148.	
5°	155.	14.8
15°	194.	55.1
25°	217.	100.3
35°	205.	128.9
45°	178.	137.5
55°	117.	105.0
65°	46.	45.3
75°	4.	4.2
85°	1.	.5
90°	0.	



LAMP BASE DATA	
WATTAGE	BASE
13Q	G24q-1
18Q	G24q-2
26T	GX24q-3
32T	GX24q-3

REFLECTOR FINISH MULTIPLIER		
CATALOG NUMBER	REFLECTOR FINISH	CONVERSION FACTOR
CS	Clear semi-specular	1.00
SPC	Clear specular	1.02
CG	Champagne Gold	0.96
GD	Gold	0.93
PW	Pewter	0.86
SG	Satin-glow	0.83
STR	Straw	0.97
WH	White, textured	0.90
WT	Wheat	0.88
MB	Micro-baffle	0.60

LUMEN SUMMARY

Zone	Lumens	% Lamp	% Fixture
0 - 30	170.	13.6	28.8
0 - 40	299.	23.9	50.6
0 - 60	542.	43.3	91.5
0 - 90	592.	47.3	100.0
Total Luminaire:			
0 - 180	592.	47.3	100.0
IES Spacing Criteria: Diagonal = 1.8 Across = 1.3			

ZONAL CAVITY COEFFICIENTS

Room Cavity Ratio	Ceiling									
	.80		.70		.50		.30		.10	
	Wall	.70	.50	.30	.70	.50	.30	.50	.30	.10
0	.56	.56	.56	.55	.55	.55	.53	.53	.53	
1	.53	.51	.49	.51	.50	.48	.48	.47	.46	
2	.49	.46	.43	.48	.45	.43	.43	.41	.40	
3	.45	.41	.38	.44	.40	.37	.39	.37	.34	
4	.42	.37	.33	.41	.36	.33	.35	.32	.30	
5	.38	.33	.29	.37	.32	.28	.31	.28	.26	
6	.35	.29	.25	.34	.29	.25	.28	.25	.22	
7	.32	.26	.22	.31	.26	.22	.25	.22	.19	
8	.29	.23	.19	.29	.23	.19	.22	.19	.16	
9	.27	.21	.17	.26	.20	.17	.20	.16	.14	
10	.25	.18	.15	.24	.18	.15	.18	.14	.12	

Effective Floor Cavity Reflectance = .20

QUANTITY ESTIMATOR

Room Size	±50 fc.	±75 fc.	±100 fc.
20' x 20' (400 sq. ft.)	42	64	90
30' x 30' (900 sq. ft.)	100	144	196
40' x 40' (1,600 sq. ft.)	182	272	361

Calculations based on standard reflectance of 80/50/20 and a light loss factor of 1.0 with a 10'-0" ceiling height.

