

6" ROUND DOWNLIGHT – VERTICAL LAMP

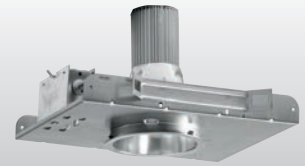
PV60

CFL

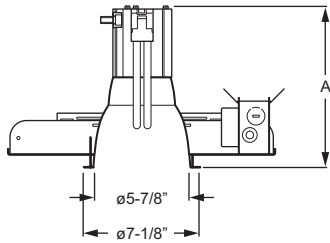
CATALOG #:	TYPE:
PROJECT:	NOTES:

EXAMPLE **PV60 - 1 26Q - CS - OPTIONS - EB1 - UNV**

SERIES NUMBER OF LAMPS WATTAGE/TYPE REFLECTOR FINISH OPTIONS BALLAST TYPE VOLTAGE



CROSS SECTION



Wattage/Type	Dim. A
13Q	8-3/4"
18Q	9-1/8"
26Q	9-7/8"
26T	8-5/8"
32T	9-1/8"
42T	9-3/4"

ORDERING INFORMATION

SERIES
PV60 6" Round Downlight-Vertical Lamp

LAMP OPTIONS

# OF LAMPS	WATTAGE/TYPE
1	13Q, 18Q, 26Q, 26T, 32T, or 42T

REFLECTOR FINISH

CS	Clear semi-specular (standard)
SPC	Clear specular
CG	Champagne gold
GD	Gold
PW	Pewter
SG	Satin-glow
STR	Straw
WH	Painted white reflector, textured
WT	Wheat

OPTIONS

For EM and EM/ITS ballast options, see [Technical Info](#). (EM is not available with RETRO option. EM/ITS option is not available with CP or YOKE options).

F	Fuse (must specify voltage)
MWT	Matte white trim
MB	Micro-baffle
YOKE	Yoke mount reflector (not available with EM/ITS option)
AC/CGS	Accent cone with clear glass lens (acrylic or polycarbonate lens options also available).
AC/CPG	Accent cone with clear prismatic tempered glass lens
AC/FF	Accent cone with fresnel glass lens
CP	Chicago Plenum (CCEA) (not available with EM/ITS or WW options)

OPTIONS (Continued)

MB/CGS	Micro-baffle with clear glass lens (acrylic or polycarbonate lens options also available).
MB/CPG	Micro-baffle with clear prismatic tempered glass lens
MB/FF	Micro-baffle with fresnel glass lens
WW	Wall wash (not available with AC, MB, or CP options)
LD	Luminous disk
LDO	Luminous disk open
LR	Luminous ring
PFS/_	Perforated shield (must specify with LD, LDO, or LR option)
SCA__°	Sloped Ceiling Adapter (Specify degree of slope in 5° increments, 10°-30°. SCA increases fixture height, see Technical Info for details.)
RETRO	Retrofit Mounting Pan Assembly (see Technical Info for details; not available with EM option)

BALLAST TYPE

EB1	1-lamp electronic ballast
EBD1*__	1-lamp electronic dimming ballast (must specify 120V or 277V only; must specify manufacturer, see Technical Info for dimming ballast options)

VOLTAGE (Must specify)

120	120V
277	277V
UNV	120-277V

FEATURES

- ▶ Self-flanged aluminum reflector prevents light leaks and is available in assorted colors.
- ▶ Finned, extruded aluminum heat sink socket housing dissipates heat for cooler operation.
- ▶ Sturdy one-piece pan construction.
- ▶ Adjustable hanger brackets with bar hangers standard.
- ▶ Easy-access, 14-gauge galvanized steel junction box with two snap-on covers.
- ▶ This fixture is proudly made in the USA.



CFL

PHOTOMETRY INFORMATION

Catalog #: PV60-126Q-120-EB

SPECIFICATIONS

Housing – 20-gauge, die-formed, galvanized steel pan/plaster frame.

Reflector – Low-iridescent aluminum. Clear semi-specular (CS) finish standard.

Electrical – Electronic ballast. Prewired at factory for easy field installation.

Mounting – Recessed. Pan size: 12" x 16-1/4" Ceiling cutout: ø6-1/2" Cutout with SCA: ø9-1/8"

Labels –

- UL/CUL listed for through-branch circuit wiring and dry or damp locations.
- UL/CUL listed for wet location under covered ceiling when specified with ___/CGS, ___/CPG, or ___/FF option.
- City of Chicago Environmental Air approved when specified with CP option.

Warranty – 5-year limited warranty, see hew.com/warranty.

TEST REPORT INFORMATION

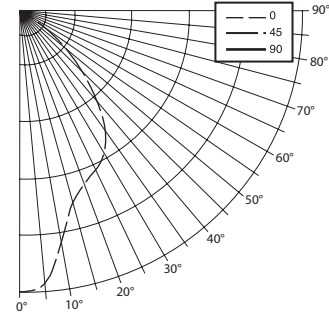
- Test Report #: 10391.0
- Date: 08/24/99
- Lamp Type: CFQ26W/G24q/35
- Lamp Quantity: 1
- Rated Lumens: 1800.

DESCRIPTION

- 1/26W Quad PL Compact Fluorescent
- 6" Diameter Recessed Luminaire
- Low-Iridescent Semi-Specular Reflector with Open Bottom

CANDLEPOWER DISTRIBUTION

Vertical Angle	Average Candela	Zonal Lumens
0°	709.	
5°	696.	66.4
15°	503.	142.6
25°	444.	205.3
35°	366.	229.9
45°	201.	155.5
55°	57.	50.7
65°	2.	2.0
75°	1.	.9
85°	0.	.0
90°	0.	



LUMEN SUMMARY

Zone	Lumens	% Lamp	% Fixture
0 - 30	414.	23.0	48.6
0 - 40	644.	35.8	75.5
0 - 60	850.	47.2	99.7
0 - 90	853.	47.4	100.0
Total Luminaire:			
0 - 180	853.	47.4	100.0
IES Spacing Criteria: Diagonal = .8 Across = .6			

ZONAL CAVITY COEFFICIENTS

Room Cavity Ratio	Zonal Cavity Coefficients									
	Ceiling	.80			.70			.50		
	Wall	.70	.50	.30	.70	.50	.30	.50	.30	.10
0	.56	.56	.56	.55	.55	.55	.53	.53	.53	
1	.54	.52	.51	.52	.51	.50	.49	.48	.47	
2	.51	.48	.46	.50	.47	.45	.46	.44	.43	
3	.48	.44	.42	.47	.44	.41	.42	.40	.39	
4	.45	.41	.38	.44	.40	.38	.39	.37	.35	
5	.42	.38	.35	.41	.37	.34	.36	.34	.32	
6	.40	.35	.32	.39	.34	.31	.34	.31	.29	
7	.37	.32	.29	.36	.32	.29	.31	.28	.26	
8	.34	.29	.26	.34	.29	.26	.28	.26	.24	
9	.32	.27	.23	.31	.26	.23	.26	.23	.21	
10	.30	.24	.21	.29	.24	.21	.24	.21	.19	

Effective Floor Cavity Reflectance = .20

QUANTITY ESTIMATOR

Room Size	±50 fc.	±75 fc.	±100 fc.
20' x 20' (400 sq. ft.)	30	42	56
30' x 30' (900 sq. ft.)	64	90	121
40' x 40' (1,600 sq. ft.)	110	169	225

Calculations based on standard reflectance of 80/50/20 and a light loss factor of 1.0 with a 10'-0" ceiling height.

LAMP BASE DATA	
WATTAGE	BASE
13Q	G24q-1
18Q	G24q-2
26Q	G24q-3
26T	GX24q-3
32T	GX24q-3
42T	GX24q-4

REFLECTOR FINISH MULTIPLIER		
CATALOG NUMBER	REFLECTOR FINISH	CONVERSION FACTOR
CS	Clear semi-specular	1.00
SPC	Clear specular	1.02
CG	Champagne Gold	0.96
GD	Gold	0.93
PW	Pewter	0.86
SG	Satin-glow	0.83
STR	Straw	0.97
WH	White, textured	0.90
WT	Wheat	0.88
MB	Micro-baffle	0.60

