

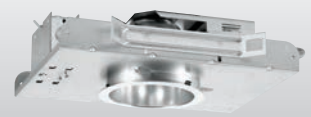
6" ROUND HORIZONTAL LAMP DOWNLIGHT

PH60

CFL

CATALOG #: _____ TYPE: _____

PROJECT: _____ NOTES: _____

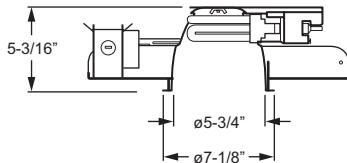


EXAMPLE

PH60 - 2 26Q - CS - OPTIONS - EB2 - UNV

SERIES NUMBER OF LAMPS WATTAGE/TYPE REFLECTOR FINISH OPTIONS BALLAST TYPE VOLTAGE

CROSS SECTION



ORDERING INFORMATION

SERIES
PH60 6" Round Horizontal Lamp Downlight

LAMP OPTIONS

# OF LAMPS	WATTAGE/TYPE
1	13Q, 18Q, 26Q, 26T, 32T, or 42T
2	13Q, 18Q, or 26Q

REFLECTOR FINISH

CS	Clear semi-specular (standard)
SPC	Clear specular
CG	Champagne gold
GD	Gold
PW	Pewter
SG	Satin-glow
STR	Straw
WH	Painted white reflector, textured
WT	Wheat

OPTIONS

For EM and EM/ITS ballast options, see [Technical Info](#) (EM is not available with RETRO option. EM/ITS option is not available with CP or YOKE options).

F	Fuse (must specify voltage)
MWT	Matte white trim
MB	Micro-baffle
YOKE	Yoke mount reflector (not available with EM/ITS option)
AC/CGS	Accent cone with clear glass lens (acrylic or polycarbonate lens options also available).
AC/CPG	Accent cone with clear prismatic tempered glass lens
AC/FF	Accent cone with fresnel glass lens
CP	Chicago Plenum (CCEA) (not available with EM/ITS option)

OPTIONS (Continued)

MB/CGS	Micro-baffle with clear glass lens (acrylic or polycarbonate lens options also available).
MB/CPG	Micro-baffle with clear prismatic tempered glass lens
MB/FF	Micro-baffle with fresnel glass lens
WW	Wall wash (not available with AC or MB)
LD	Luminous disk
LDO	Luminous disk open
LR	Luminous ring
PFS/_ _	Perforated shield (must specify LD, LDO, or LR option)
SCA_ _ °	Sloped Ceiling Adapter (Specify degree of slope in 5° increments, 10°-30°. SCA increases fixture height, see Technical Info for details.)
RETRO	Retrofit Mounting Pan Assembly (see Technical Info for details) (not available with EM option)

BALLAST TYPE

EB1	1-lamp electronic ballast
EB2	2-lamp electronic ballast
EBD1*_ _	1-lamp electronic dimming ballast (must specify 120V or 277V only; must specify manufacturer, see Technical Info for dimming ballast options)
EBD2*_ _	2-lamp electronic dimming ballast (must specify 120V or 277V only; must specify manufacturer, see Technical Info for dimming ballast options)

VOLTAGE (Must specify)

120	120V
277	277V
UNV	120-277V

FEATURES

- ▶ Horizontal lamp placement and reflector design provides wider light distribution with a lower profile for shallow plenums.
- ▶ Self-flanged reflector offers maximum lamp performance.
- ▶ Sturdy one-piece pan construction.
- ▶ Adjustable hanger brackets with bar hangers standard.
- ▶ Easy-access, 14-gauge galvanized steel junction box with two snap-on covers.
- ▶ Self-flanged, low-iridescent aluminum reflector available in assorted colors.
- ▶ This fixture is proudly made in the USA.



PH60

6" ROUND DOWNLIGHT – HORIZONTAL LAMP

CFL

PHOTOMETRY INFORMATION

Catalog #: PH60-226Q-EB-CS

SPECIFICATIONS

Housing – 20-gauge, die-formed, galvanized steel pan/plaster frame.

Reflector – Low-iridescent aluminum. Clear semi-specular (CS) finish standard.

Electrical – Electronic ballast. Prewired at factory for easy field installation.

Mounting – Recessed.

Pan size: 12" x 16-1/4" Ceiling cutout: ø6-1/2" Cutout with SCA: ø9-1/8"

Labels –

- UL/CUL listed for through-branch circuit wiring and dry or damp locations.
- UL/CUL listed for wet location under covered ceiling when specified with ___/CGS, ___/CPG, or ___/FF option.
- City of Chicago Environmental Air approved when specified with CP option.

Warranty – 5-year limited warranty, see hew.com/warranty.

LAMP BASE DATA	
WATTAGE	BASE
13Q	G24q-1
18Q	G24q-2
26Q	G24q-3
26T	GX24q-3
32T	GX24q-3
42T	GX24q-4

REFLECTOR FINISH MULTIPLIER		
CATALOG NUMBER	REFLECTOR FINISH	CONVERSION FACTOR
CS	Clear semi-specular	1.00
SPC	Clear specular	1.02
CG	Champagne Gold	0.96
GD	Gold	0.93
PW	Pewter	0.86
SG	Satin-glow	0.83
STR	Straw	0.97
WH	White, textured	0.90
WT	Wheat	0.88
MB	Micro-baffle	0.60

TEST REPORT INFORMATION

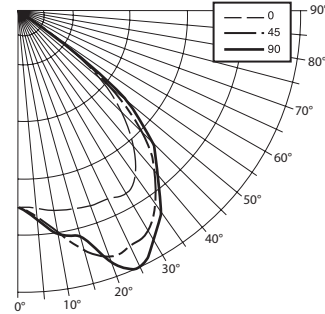
- Test Report #: 13291.0
- Date: 10/20/06
- Lamp Type: CFQ26W/G24q/35
- Lamp Quantity: 2
- Rated Lumens: 1800.

DESCRIPTION

- 2/26W Quad Tube Horizontal Compact Fluorescent Downlight
- 6" Aperature
- Low-Irdescent Semi-Specular Reflector with Open Bottom
- Sylvania Ballast #QTP2x2 6CF/UNVBS

CANDLEPOWER DISTRIBUTION

Vertical Angle	Horizontal Angle			Zonal Lumens
	0°	45°	90°	
0°	610.	610.	610.	
5°	614.	640.	651.	60.8
15°	637.	770.	725.	208.2
25°	642.	804.	878.	366.2
35°	621.	723.	755.	445.5
45°	440.	540.	576.	408.3
55°	103.	119.	150.	113.6
65°	8.	8.	8.	8.2
75°	3.	2.	2.	2.5
85°	1.	1.	0.	1.0
90°	0.	0.	0.	



LUMEN SUMMARY

Zone	Lumens	% Lamp	% Fixture
0 - 30	635.	17.6	39.3
0 - 40	1081.	30.0	66.9
0 - 60	1603.	44.5	99.3
0 - 90	1614.	44.8	100.0
Total Luminaire:			
0 - 180	1614.	44.8	100.0

IES Spacing Criteria: End = 1.5
Diagonal = 1.6
Across = 1.6

ZONAL CAVITY COEFFICIENTS

Room Cavity Ratio	Ceiling									
	.80		.70		.50		.30		.10	
	Wall	.70	.50	.30	.70	.50	.30	.50	.30	.10
0	.53	.53	.53	.52	.52	.52	.50	.50	.50	
1	.50	.49	.48	.49	.48	.47	.46	.45	.44	
2	.48	.45	.43	.46	.44	.42	.43	.41	.40	
3	.45	.41	.39	.44	.40	.38	.39	.37	.36	
4	.42	.38	.35	.41	.37	.34	.36	.34	.32	
5	.39	.34	.31	.38	.34	.31	.33	.30	.28	
6	.36	.31	.28	.35	.31	.28	.30	.27	.25	
7	.33	.28	.25	.33	.28	.25	.27	.24	.22	
8	.31	.25	.22	.30	.25	.22	.25	.22	.20	
9	.28	.23	.19	.28	.22	.19	.22	.19	.17	
10	.26	.21	.17	.25	.20	.17	.20	.17	.15	

Effective Floor Cavity Reflectance = .20

QUANTITY ESTIMATOR

Room Size	±50 fc.	±75 fc.	±100 fc.
20' x 20' (400 sq. ft.)	14	22	29
30' x 30' (900 sq. ft.)	32	48	65
40' x 40' (1,600 sq. ft.)	57	86	115

Calculations based on standard reflectance of 80/50/20 and a light loss factor of 1.0 with a 10'-0" ceiling height.

