

T5 STAGGERED MINI-STRIP

73SS

SUBMITTAL:

T5

JOB:

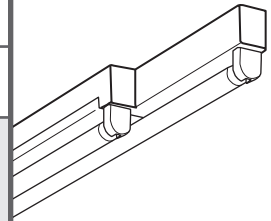
TYPE:

VOLTAGE:

EXAMPLE

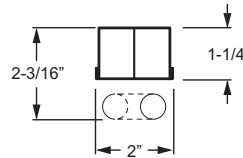
73SS - 4 - 2 54T5H - OPTIONS - EB2 - UNV

SERIES
NOMINAL LENGTH
TOTAL LAMPS
WATTAGE/TYPE
OPTIONS
BALLAST TYPE
VOLTAGE



FEATURES

- ▶ Small profile allows for inconspicuous placement in confined spaces.
- ▶ 6" housing offset ensures uniform illumination in continuous row applications—ideal for cove lighting.
- ▶ Factory-mounted, prewired sockets cut installation time.
- ▶ 1- or 2-lamp cross-section available.
- ▶ Available in standard T5 or T5HO.
- ▶ Ballast secured by two captive bolts and nuts to ensure a tight, reliable fit for maximum heat dissipation.
- ▶ This fixture is proudly made in the USA.



SPECIFICATIONS

Housing – 20-gauge die-formed C.R.S.
Finish – 92% minimum average reflective white polyester powder coat bonded to phosphate-free, multi-stage pretreated metal. All parts painted after fabrication to facilitate installation, increase efficiency, and inhibit corrosion.
Electrical – Electronic ballast standard, program start T5, rated Class P.
Mounting – Surface or suspended.
Labels – UL/CUL listed as fluorescent luminaire suitable for dry or damp locations.

ORDERING INFORMATION

SERIES

73SS T5 Staggered Mini-Strip

NOMINAL LENGTH

2	2'
3	3'
4	4'
6	6'
8	8'

TOTAL LAMPS

1, 2, or 4 (1- or 2-lamp cross-section)

LAMP WATTAGE/TYPE

14T5S	2', 14-watt T5
24T5H	2', 24-watt T5HO
21T5S	3', 21-watt T5
39T5H	3', 39-watt T5HO
28T5S	4', 28-watt T5
54T5H	4', 54-watt T5HO

OPTIONS

For generic **EM ballast** options (must specify voltage), see Fluorescent Information section. Size restrictions apply.

ACCESSORIES

See back for **special reflectors**, ordered separately.
 See Fluorescent Information section for **mounting accessories**.

BALLAST TYPE

See Information section for complete ballast offering.

EB1	1-lamp electronic ballast
EB2	2-lamp electronic ballast
EB2/2	(2) 2-lamp electronic ballasts
EB4	4-lamp electronic ballast

VOLTAGE

120	120V
277	277V
UNV	120-277V
347	347V
480	480V
HRV	347/480V

T5

PHOTOMETRY

Catalog #: 73-4-254T5H-EB2

SPECIAL REFLECTORS

Reflectors are ordered separately. For additional styles, see Fluorescent Information section.

Note: Drawings represent reflector style. Actual cross-section will vary depending on fixture/lamp configuration.

Example:
R1015-4-73SS REFL

R1015



R1191



R1348



R1370

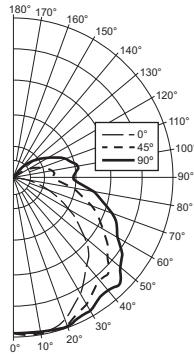


R1684



TEST REPORT INFORMATION

- ▶ Test Report #: 10488.0
- ▶ Date: 10/20/99
- ▶ Lamp Type: FP54T5/835
- ▶ Lamp Quantity: 2



CANDLEPOWER DISTRIBUTION

Vertical Angle	Horizontal Angle			Zonal Lumens
	0°	45°	90°	
0°	1910.	1910.	1910.	
5°	1916.	1946.	1912.	183.5
15°	1907.	1939.	1932.	546.2
25°	1739.	1840.	1888.	844.7
35°	1506.	1697.	1818.	1054.6
45°	1308.	1644.	1843.	1245.4
55°	972.	1412.	1630.	1216.3
65°	636.	1152.	1400.	1083.7
75°	302.	874.	1136.	855.3
85°	55.	591.	823.	577.2
90°	0.	495.	764.	
95°	0.	418.	735.	482.5
105°	0.	300.	593.	410.1
115°	0.	190.	431.	290.2
125°	0.	95.	269.	176.2
135°	0.	28.	129.	85.7
145°	0.	0.	30.	29.4
155°	0.	0.	0.	4.7
165°	0.	0.	0.	.0
175°	0.	0.	0.	.0
180°	0.	0.	0.	

LUMEN SUMMARY

Zone	Lumens	% Lamp	% Fixture
0 - 30	1574.	15.7	17.3
0 - 40	2629.	26.3	28.9
0 - 60	5091.	50.9	56.0
0 - 90	7607.	76.1	83.7
90 - 120	1183.	11.8	13.0
90 - 130	1359.	13.6	15.0
90 - 150	1474.	14.7	16.2
90 - 180	1479.	14.8	16.3
Total Luminaire:			
0 - 180	9086.	90.9	100.0

Total Luminaire Optical Efficiency: **90.9%**
IES Spacing Criteria: Across = 1.5, Along = 1.3

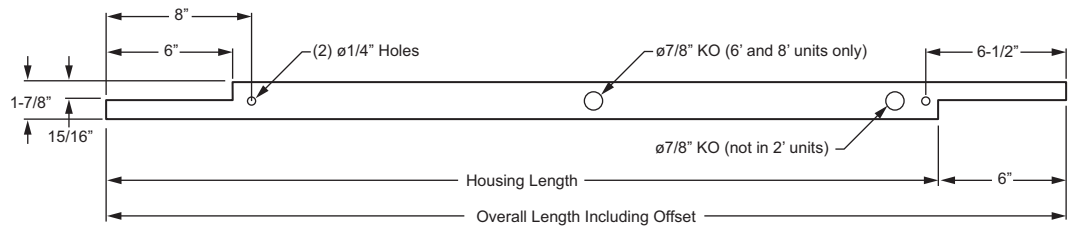
ZONAL CAVITY COEFFICIENTS

Room Cavity Ratio	Ceiling			Wall			Floor			
	.80	.70	.50	.30	.70	.50	.30	.50	.30	.10
0	1.05	1.05	1.05	1.00	1.00	1.00	.93	.93	.93	
1	.94	.89	.84	.90	.85	.81	.79	.75	.72	
2	.85	.76	.70	.81	.73	.67	.68	.63	.58	
3	.77	.67	.59	.73	.64	.57	.59	.53	.48	
4	.70	.59	.50	.67	.56	.49	.52	.46	.41	
5	.64	.51	.43	.61	.49	.42	.46	.39	.34	
6	.58	.46	.37	.55	.44	.36	.41	.34	.29	
7	.54	.41	.33	.51	.39	.32	.37	.30	.25	
8	.49	.37	.29	.47	.35	.28	.33	.26	.22	
9	.45	.33	.25	.43	.32	.24	.29	.23	.18	
10	.42	.30	.22	.40	.29	.22	.27	.21	.16	

Effective Floor Cavity Reflectance = .20

FIXTURE DETAILS

BACKVIEW



1-LAMP CROSS-SECTION



NOMINAL LENGTH	HOUSING LENGTH	OVERALL LENGTH INCLUDING OFFSET
2'	16-13/16"	22-13/16"
3'	28-11/16"	34-11/16"
4'	40-7/16"	46-7/16"
6'	57-3/8"	63-3/8"
8'	81"	87"

2-LAMP CROSS-SECTION



NOMINAL LENGTH	HOUSING LENGTH	OVERALL LENGTH INCLUDING OFFSET
2'	22-13/16"	28-13/16"
3'	34-11/16"	40-11/16"
4'	46-7/16"	52-7/16"
6'	69-3/8"	75-3/8"
8'	92-15/16"	98-15/16"