

SPECIFICATION GRADE T8 STRIP

77

T8

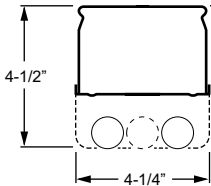
CATALOG #:	TYPE:
PROJECT:	NOTES:

EXAMPLE **77** - **8** - **4** **32** - **OPTIONS** - **EB2/2** - **UNV**

SERIES NOMINAL LENGTH TOTAL LAMPS WATTAGE/TYPE OPTIONS BALLAST TYPE VOLTAGE



CROSS SECTION



ORDERING INFORMATION

SERIES
77 Specification Grade T8 Strip

NOMINAL LENGTH

2	2'
3	3'
4	4'
6	6'
8	8'

TOTAL LAMPS
1, 2, or 4 (1- or 2-lamp cross-section)

LAMP WATTAGE/TYPE

17	2', 17-watt T8
25	3', 25-watt T8
32	4', 32-watt T8
59	8', 59-watt T8
86	8', 86-watt T8

OPTIONS
 For generic EM ballast options (must specify voltage), see [Technical Info](#).
ALUM .032" thick aluminum fixture, painted after fabrication

ACCESSORIES
 See back for [special reflectors](#), ordered separately.
 See Technical Info for [mounting accessories](#).
WG-7711 11-gauge white powder coat wireguard
WG-7714 14-gauge white powder coat wireguard

BALLAST TYPE
 See Technical info for [complete ballast offering](#).
EB1 1-lamp electronic ballast
EB2 2-lamp electronic ballast
EB2/2 (2) 2-lamp electronic ballasts
EB4 4-lamp electronic ballast

VOLTAGE

120	120V
277	277V
UNV	120-277V
347	347V

FEATURES

- ▶ Hinging/locking lamp brackets and factory-mounted, prewired sockets reduce installation time.
- ▶ Quarter-turn fastener secures wireway cover to housing.
- ▶ Channel connector furnished for continuous row applications (8' units only).
- ▶ Special reflectors are available for precise light distribution.
- ▶ Ballast secured by two captive bolts and nuts to ensure a tight, reliable fit for maximum heat dissipation.
- ▶ This fixture is proudly made in the USA.



SPECIFICATIONS

Housing – 20-gauge die-formed ribbed C.R.S.
Finish – 92% minimum average reflective white polyester powder coat bonded to phosphate-free, multi-stage pretreated metal. All parts painted after fabrication to facilitate installation, increase efficiency, and inhibit corrosion.

Electrical – Electronic ballast standard, instant start T8, rated Class P.

Mounting – Surface or suspended.

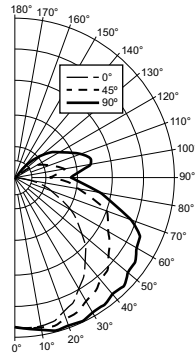
Labels – UL/CUL listed as fluorescent luminaire suitable for dry or damp locations.

Warranty – 5-year limited warranty, see hew.com/warranty.

PHOTOMETRY

TEST REPORT INFORMATION

- ▶ Test Report #: 8594.0
- ▶ Date: 12/27/95
- ▶ Lamp Type: F32T8/SPX35/RS
- ▶ Lamp Quantity: 4



CANDLEPOWER DISTRIBUTION

Vertical Angle	Horizontal Angle			Zonal Lumens
	0°	45°	90°	
0°	2256.	2256.	2256.	
5°	2270.	2270.	2284.	216.8
15°	2240.	2310.	2384.	654.7
25°	2066.	2234.	2382.	1030.1
35°	1794.	2088.	2332.	1303.7
45°	1480.	1954.	2300.	1488.5
55°	1110.	1720.	2186.	1519.3
65°	722.	1526.	2050.	1457.2
75°	342.	1194.	1522.	1133.6
85°	58.	788.	990.	700.5
90°	6.	488.	806.	
95°	0.	618.	936.	606.1
105°	0.	646.	1148.	643.7
115°	0.	474.	882.	438.0
125°	0.	300.	666.	273.4
135°	0.	136.	400.	127.8
145°	0.	26.	180.	38.3
155°	0.	0.	26.	4.5
165°	0.	0.	0.	.0
175°	0.	0.	0.	.0
180°	0.	0.	0.	

ZONAL CAVITY COEFFICIENTS

	Ceiling			Wall			Floor			
	.80	.70	.50	.70	.50	.30	.50	.30	.10	
Room Cavity Ratio	0	1.13	1.13	1.13	1.08	1.08	1.08	1.00	1.00	1.00
1	1.01	.96	.91	.97	.92	.87	.84	.81	.78	
2	.91	.82	.75	.87	.79	.72	.72	.67	.62	
3	.83	.72	.63	.79	.69	.61	.63	.57	.51	
4	.75	.63	.54	.72	.60	.52	.56	.49	.43	
5	.68	.55	.46	.65	.53	.44	.49	.41	.36	
6	.63	.49	.40	.59	.47	.38	.43	.36	.31	
7	.58	.44	.35	.55	.42	.34	.39	.32	.26	
8	.53	.39	.30	.50	.38	.29	.35	.28	.23	
9	.49	.35	.27	.46	.34	.26	.31	.24	.19	
10	.45	.32	.24	.43	.31	.23	.28	.22	.17	

Effective Floor Cavity Reflectance = .20

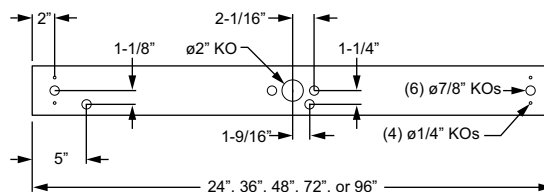
LUMEN SUMMARY

Zone	Lumens	% Lamp	% Fixture
0 - 30	1902.	16.1	16.3
0 - 40	3205.	27.2	27.5
0 - 60	6213.	52.7	53.4
0 - 90	9504.	80.5	81.7
90 - 120	1688.	14.3	14.5
90 - 130	1961.	16.6	16.9
90 - 150	2127.	18.0	18.3
90 - 180	2132.	18.1	18.3
Total Luminaire:			
0 - 180	11636.	98.6	100.0

Total Luminaire Optical Efficiency: 98.6%
 IES Spacing Criteria: Across = 1.6, Along = 1.3

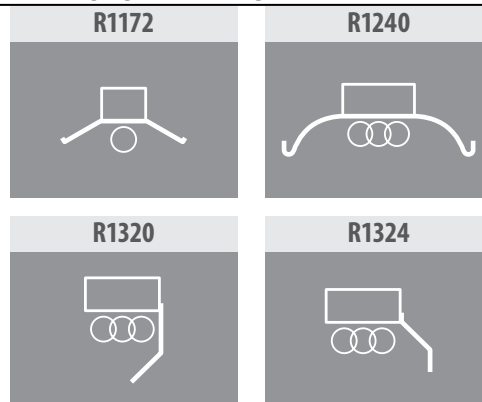
FIXTURE DETAILS

BACK VIEW



Note: Center ø2" and (3) ø7/8" KOs are on 4', 6', and 8' units only.

REFLECTOR DETAILS



Reflectors are ordered separately. **Example: R1172-4-76 REFL** For additional styles, see [Technical Info](#).
 Clear polycarbonate reflector aligners for continuous row applications (8' unit only) are ordered with reflectors.
Note: Drawings represent reflector style. Actual cross-section will vary depending on fixture/lamp configuration.