

SPECIFICATION GRADE T8 TURRET STRIP

78

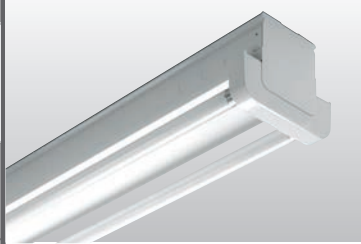
T8

CATALOG #: _____ TYPE: _____

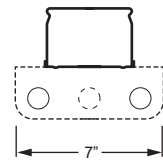
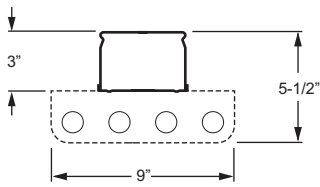
PROJECT: _____ NOTES: _____

EXAMPLE **78 - 8 - 4 32 - OPTIONS - EB2/2 - UNV**

SERIES NOMINAL LENGTH TOTAL WATTAGE/LAMPS TYPE OPTIONS BALLAST TYPE VOLTAGE



CROSS SECTION



ORDERING INFORMATION

SERIES	
78	Specification Grade T8 Turret Strip
NOMINAL LENGTH	
4	4'
6	6'
8	8'
TOTAL LAMPS	
2, 3, 4, 6, or 8	(2-, 3-, or 4-lamp cross-section)
LAMP WATTAGE/TYPE	
32	4', 32-watt T8
59	8', 59-watt T8
86	8', 86-watt T8

OPTIONS
For generic EM ballast options (must specify voltage), see [Technical Info](#).

ACCESSORIES
See Technical Info for [mounting accessories](#).

BALLAST TYPE
See Information section for complete ballast offering.

EB2	2-lamp electronic ballast
EB3	3-lamp electronic ballast
EB4	4-lamp electronic ballast
EB3/3	(2) 3-lamp electronic ballasts
EB4/4	(2) 4-lamp electronic ballasts

VOLTAGE

120	120V
277	277V
UNV	120-277V
347	347V

FEATURES

- ▶ Spring-loaded, turret style sockets are enclosed in a heavy-duty steel housing.
- ▶ Hinging/locking lamp brackets and factory-mounted, prewired sockets reduce installation time.
- ▶ Quarter-turn fastener secures wireway cover to housing.
- ▶ Channel connector furnished for continuous row applications (8' units only).
- ▶ Ballast secured by two captive bolts and nuts to ensure a tight, reliable fit for maximum heat dissipation.
- ▶ This fixture is proudly made in the USA.

SPECIFICATIONS

Housing – 20-gauge die-formed, ribbed C.R.S.

Finish – 92% minimum average reflective white polyester powder coat bonded to phosphate-free, multi-stage pretreated metal. All parts painted after fabrication to facilitate installation, increase efficiency, and inhibit corrosion.

Electrical – Electronic ballast standard, instant start T8, rated Class P.

Mounting – Surface or suspended.

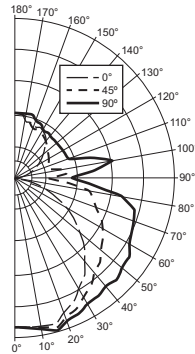
Labels – UL/CUL listed as fluorescent luminaire suitable for dry or damp locations.

Warranty – 5-year limited warranty, see hew.com/warranty.

PHOTOMETRY

TEST REPORT INFORMATION

- ▶ Test Report #: 8596.0
- ▶ Date: 12/28/95
- ▶ Lamp Type: F32T8/SPX35/RS
- ▶ Lamp Quantity: 4



CANDLEPOWER DISTRIBUTION

Vertical Angle	Horizontal Angle			Zonal Lumens
	0°	45°	90°	
0°	1930.	1930.	1930.	
5°	1938.	1944.	1948.	185.6
15°	1954.	2004.	2042.	567.1
25°	1762.	1864.	1930.	857.7
35°	1534.	1692.	1860.	1066.2
45°	1248.	1540.	1860.	1201.5
55°	922.	1378.	1790.	1226.9
65°	588.	1220.	1660.	1157.9
75°	262.	1020.	1586.	1044.2
85°	44.	674.	996.	668.3
90°	0.	416.	704.	
95°	6.	666.	996.	628.7
105°	90.	444.	1038.	547.5
115°	228.	472.	708.	462.1
125°	378.	518.	708.	470.8
135°	526.	574.	708.	453.2
145°	684.	656.	736.	421.5
155°	786.	704.	740.	331.3
165°	862.	738.	756.	222.5
175°	862.	862.	846.	82.0
180°	852.	852.	852.	

ZONAL CAVITY COEFFICIENTS

	Ceiling			Wall			Floor			
	.80	.70	.50	.70	.50	.30	.50	.30	.10	
Room Cavity Ratio	0	1.10	1.10	1.10	1.04	1.04	1.04	.92	.92	.92
1	.98	.93	.88	.92	.88	.83	.78	.74	.71	
2	.88	.80	.72	.83	.75	.69	.67	.61	.57	
3	.80	.69	.61	.75	.65	.58	.58	.52	.47	
4	.73	.61	.52	.68	.58	.50	.51	.45	.40	
5	.66	.54	.45	.62	.51	.42	.45	.38	.33	
6	.61	.48	.39	.57	.45	.27	.40	.33	.28	
7	.56	.43	.34	.52	.40	.32	.36	.29	.25	
8	.52	.38	.30	.48	.36	.29	.32	.26	.21	
9	.48	.35	.26	.45	.33	.25	.29	.23	.18	
10	.44	.31	.24	.42	.30	.23	.27	.20	.16	

Effective Floor Cavity Reflectance = .20

LUMEN SUMMARY

Zone	Lumens	% Lamp	% Fixture
0 - 30	1610.	13.6	13.9
0 - 40	2677.	22.7	23.1
0 - 60	5105.	43.3	44.0
0 - 90	7975.	67.6	68.8
90 - 120	1638.	13.9	14.1
90 - 130	2109.	17.9	18.2
90 - 150	2984.	25.3	25.7
90 - 180	3620.	30.7	31.2
Total Luminaire:			
0 - 180	11595.	98.3	100.0

Total Luminaire Optical Efficiency: **98.3%**
IES Spacing Criteria: Across = 1.5, Along = 1.3

FIXTURE DETAILS

BACK VIEW

