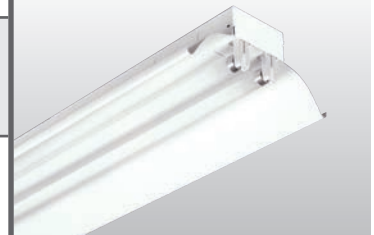


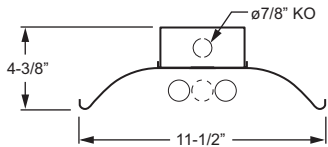
CATALOG #:	TYPE:
PROJECT:	NOTES:

EXAMPLE **80 - 8 - 4 32 - OPTIONS - EB2/2 - UNV**

SERIES NOMINAL LENGTH TOTAL WATTAGE/LAMPS TYPE OPTIONS/ACCESSORIES BALLAST TYPE VOLTAGE



CROSS SECTION



ORDERING INFORMATION

SERIES
80 Standard Industrial

NOMINAL LENGTH

4	4'
8	8'

TOTAL LAMPS
1, 2, 3, 4, or 6 (1-, 2-, or 3-lamp cross-section)

LAMP WATTAGE/TYPE

28T5S	4', 28-watt T5
32	4', 32-watt T8
54T5H	4', 54-watt T5HO
59	8', 59-watt T8 (1- or 2-lamp cross-section only)
86	8', 86-watt T8 (1- or 2-lamp cross-section only)

OPTIONS/ACCESSORIES

See Technical Info for [generic EM ballast options](#) (must specify voltage) and [mounting accessories](#).
 Wireguard accessory available, ordered separately, see [Technical Info](#).

- UL** Reflector with uplight component
- RA-80** Steel reflector row aligner (1 pair)
- SS-12** Single stem and canopy, 12"
- SWS-12** Swivel stem and canopy, 12"
- 325** 1-1/2" ceiling spacer
- GAT** GAT fastener (T-bar clip)
- VBY** (2) Y-hangers
- VBY-2** (2) Y-hangers and (2) 2' chains

BALLAST TYPE

EB1	1-lamp electronic ballast
EB2	2-lamp electronic ballast
EB3	3-lamp electronic ballast
EB4	4-lamp electronic ballast
EB2/1	(1) 2-lamp and (1) 1-lamp electronic ballast
EB2/2	(2) 2-lamp electronic ballasts
EB3/3	(2) 3-lamp electronic ballasts
EB4/2	(1) 4-lamp and (1) 2-lamp electronic ballast

VOLTAGE

120	120V
277	277V
UNV	120-277V
347	347V

FEATURES

- ▶ For light industrial applications and low to medium mounting heights.
- ▶ Accommodates up to three T5 or T8 lamps in cross-section and features a shallow reflector for broad, downward light distribution.
- ▶ Up to 96.3% optical efficiency.
- ▶ Factory-mounted prewired sockets and hinging/locking lamp brackets reduce installation time.
- ▶ One quarter-turn fastener secures reflector and housing.
- ▶ Channel connector and clear polycarbonate reflector aligners furnished for continuous row applications (8' unit only).
- ▶ Ballast(s) secured by two captive bolts and nuts to ensure a tight, reliable fit for maximum heat dissipation.
- ▶ This fixture is proudly made in the USA.



PHOTOMETRY

80-8-432-EB2/2 Report #: 8600.0; 12/27/95 | Lamp Type: F32T8/SPX735/RS; Lamp Quantity: 4
 Total Luminaire Optical Efficiency: 96.3%; IES Spacing Criteria: End = 1.3, Across = 1.4; Effective Floor Cavity Reflectance = .20

SPECIFICATIONS

Housing – 22-gauge die-formed C.R.S.

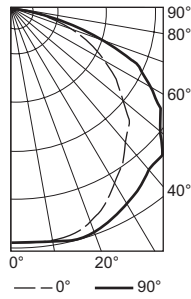
Reflector – 22-gauge die-formed C.R.S. with 92% minimum average reflective white polyester powder coated finish.

Finish – 92% minimum average reflective white polyester powder coat bonded to phosphate-free, multi-stage pretreated metal. All parts painted after fabrication to facilitate installation, increase efficiency, and inhibit corrosion.

Electrical – Electronic ballast standard, instant start T8, program start T5, rated Class P.

Mounting – Surface or suspended (see options in ordering information).

Labels – UL/CUL listed as fluorescent luminaire suitable for dry or damp locations.



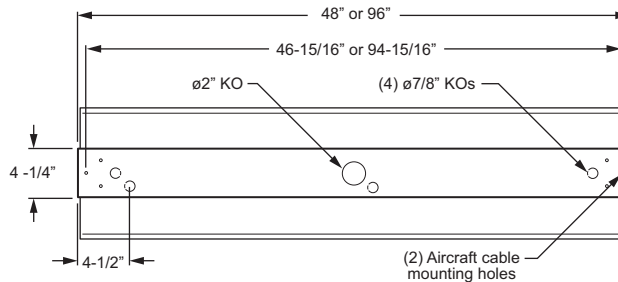
CANDLEPOWER DISTRIBUTION	Vertical Angle	Horizontal Angle			Zonal Lumens
		0°	45°	90°	
0		3372	3372	3372	
5		3370	3374	3376	322.2
15		3360	3426	3450	967.8
25		3098	3220	3342	1492.3
35		2712	2946	3146	1847.1
45		2342	2744	3000	2092.7
55		1798	2286	2562	2006.0
65		1218	1762	1968	1674.3
75		572	942	784	864.8
85		62	80	82	100.9
90		0	0	0	

LUMEN SUMMARY	Zone	Lumens	% Lamp	% Fixture
	0 - 30	2782	23.6	24.5
	0 - 40	4629	39.2	40.7
	0 - 60	8728	74.0	76.8
	0 - 90	11368	96.3	100.0
	0 - 180	11368	96.3	100.0

		ZONAL CAVITY COEFFICIENTS									
		Ceiling	.80			.70			.50		
		Wall	.70	.50	.30	.70	.50	.30	.50	.30	.10
ROOM CAVITY RATIO	0		1.15	1.15	1.15	1.12	1.12	1.12	1.07	1.07	1.07
	1		1.06	1.01	.97	1.03	.99	.95	.95	.92	.89
	2		.96	.88	.82	.94	.87	.81	.83	.78	.74
	3		.88	.78	.70	.85	.76	.69	.74	.67	.62
	4		.80	.69	.60	.78	.67	.60	.65	.58	.53
	5		.73	.60	.51	.71	.59	.51	.57	.50	.44
	6		.67	.54	.45	.65	.53	.44	.51	.43	.38
	7		.61	.48	.39	.59	.47	.39	.46	.38	.33
	8		.56	.43	.34	.55	.42	.34	.41	.33	.28
	9		.52	.38	.30	.50	.38	.30	.36	.29	.24
	10		.48	.35	.27	.47	.34	.26	.33	.26	.21

FIXTURE DETAILS

BACK VIEW



Note: 8' fixture uses (2) 4' reflectors