

CATALOG #:

TYPE:

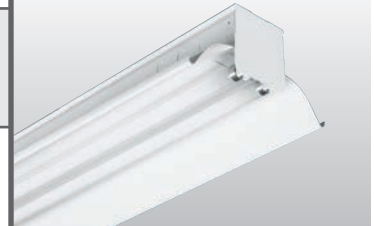
PROJECT:

NOTES:

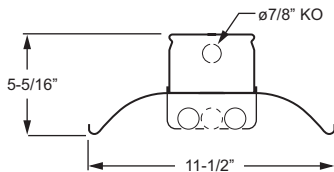
EXAMPLE

**81 - 8 - 4 32 - OPTIONS - EB2/2 - UNV**

SERIES    NOMINAL LENGTH    TOTAL WATTAGE/LAMPS    TYPE    OPTIONS/ACCESSORIES    BALLAST TYPE    VOLTAGE



## FEATURES



## ORDERING INFORMATION

### SERIES

**81** Utility-Grade Industrial

### NOMINAL LENGTH

**4** 4'  
**8** 8'

### TOTAL LAMPS

**1, 2, 3, 4, or 6** (1-, 2-, or 3-lamp cross-section)

### LAMP WATTAGE/TYPE

**32** 4', 32-watt T8  
**59** 8', 59-watt T8 (1- or 2-lamp cross-section only)  
**86** 8', 86-watt T8 (1- or 2-lamp cross-section only)

### OPTIONS/ACCESSORIES

See Technical Info for [generic EM ballast options](#) (must specify voltage) and [mounting accessories](#).

Wireguard accessory available, ordered separately, see [Technical Info](#).

**UL** Reflector with uplight component  
**RA-80** Steel reflector row aligner (1 pair)  
**SS-12** Single stem and canopy, 12"  
**SWS-12** Swivel stem and canopy, 12"  
**325** 1-1/2" ceiling spacer  
**GAT** GAT fastener (T-bar clip)  
**VBY** (2) Y-hangers  
**VBV-2** (2) Y-hangers and (2) 2' chains

### BALLAST TYPE

**EB1** 1-lamp electronic ballast  
**EB2** 2-lamp electronic ballast  
**EB3** 3-lamp electronic ballast  
**EB4** 4-lamp electronic ballast  
**EB2/1** (1) 2-lamp and (1) 1-lamp electronic ballast  
**EB2/2** (2) 2-lamp electronic ballasts  
**EB3/3** (2) 3-lamp electronic ballasts  
**EB4/2** (1) 4-lamp and (1) 2-lamp electronic ballast

### VOLTAGE

**120** 120V  
**277** 277V  
**UNV** 120-277V  
**347** 347V

## FEATURES

- ▶ For light industrial applications and low to medium mounting heights.
- ▶ Accommodates up to three T8 lamps in cross-section and features a shallow reflector for broad, downward light distribution.
- ▶ Up to 96.3% optical efficiency.
- ▶ Factory-mounted prewired sockets and hinging/locking lamp brackets reduce installation time.
- ▶ Ribbed channel provides extra strength and durability.
- ▶ One quarter-turn fastener secures reflector and housing.
- ▶ Channel connector and clear polycarbonate reflector aligners furnished for continuous row applications (8' unit only).
- ▶ Ballast(s) secured by two captive bolts and nuts to ensure a tight, reliable fit for maximum heat dissipation.
- ▶ This fixture is proudly made in the USA.

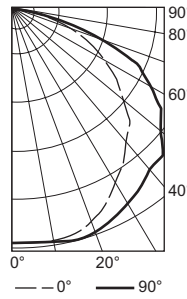


### PHOTOMETRY

81-8-432-EB2/Z Report #: 8602.0; 12/27/95 | Lamp Type: F32T8/SPX735/RS; Lamp Quantity: 4  
 Total Luminaire Optical Efficiency: 96.3%; IES Spacing Criteria: End = 1.3, Across = 1.4; Effective Floor Cavity Reflectance = .20

### SPECIFICATIONS

- Housing** – 20-gauge die-formed C.R.S.
- Reflector** – 22-gauge die-formed C.R.S. with 92% minimum average reflective white polyester powder coated finish.
- Finish** – 92% minimum average reflective white polyester powder coat bonded to phosphate-free, multi-stage pretreated metal. All parts painted after fabrication to facilitate installation, increase efficiency, and inhibit corrosion.
- Electrical** – Electronic ballast standard, instant start T8, rated Class P.
- Mounting** – Surface or suspended (see options in ordering information).
- Labels** – UL/CUL listed as fluorescent luminaire suitable for dry or damp locations.
- Warranty** – 5-year limited warranty, see [hew.com/warranty](http://hew.com/warranty).



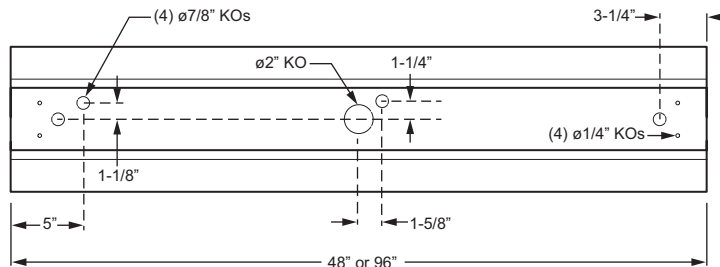
CANDLEPOWER DISTRIBUTION	Vertical Angle	Horizontal Angle			Zonal Lumens
		0°	45°	90°	
0		3372	3372	3372	
5		3370	3374	3376	322.2
15		3360	3426	3450	967.8
25		3098	3220	3342	1492.3
35		2712	2946	3146	1847.1
45		2342	2744	3000	2092.7
55		1798	2286	2562	2006.0
65		1218	1762	1968	1674.3
75		572	942	784	864.8
85		62	80	82	100.9
90		0	0	0	

LUMEN SUMMARY	Zone	Lumens	% Lamp	% Fixture
	0 - 30	2782	23.6	24.5
	0 - 40	4629	39.2	40.7
	0 - 60	8728	74.0	76.8
	0 - 90	11368	96.3	100.0
	0 - 180	11368	96.3	100.0

ZONAL CAVITY COEFFICIENTS										
ROOM CAVITY RATIO	Ceiling	.80			.70			.50		
	Wall	.70	.50	.30	.70	.50	.30	.50	.30	.10
0	1.15	1.15	1.15	1.15	1.12	1.12	1.12	1.07	1.07	1.07
1	1.06	1.01	.97	.97	1.03	.99	.95	.95	.92	.89
2	.96	.88	.82	.82	.94	.87	.81	.83	.78	.74
3	.88	.78	.70	.70	.85	.76	.69	.74	.67	.62
4	.80	.69	.60	.60	.78	.67	.60	.65	.58	.53
5	.73	.60	.51	.51	.71	.59	.51	.57	.50	.44
6	.67	.54	.45	.45	.65	.53	.44	.51	.43	.38
7	.61	.48	.39	.39	.59	.47	.39	.46	.38	.33
8	.56	.43	.34	.34	.55	.42	.34	.41	.33	.28
9	.52	.38	.30	.30	.50	.38	.30	.36	.29	.24
10	.48	.35	.27	.27	.47	.34	.26	.33	.26	.21

### FIXTURE DETAILS

#### BACK VIEW



Note: 8' fixture uses (2) 4' reflectors