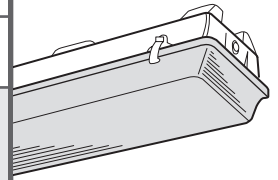
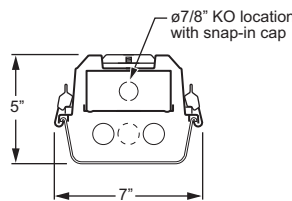


SUBMITTAL:	
JOB:	
TYPE:	VOLTAGE:
<p>EXAMPLE → 92 - 4 - 2 32 - A - OPTIONS - EB2 - UNV</p> <p> SERIES NOMINAL LENGTH TOTAL WATTAGE/LAMPS SHIELDING OPTIONS/ACCESSORIES BALLAST TYPE VOLTAGE </p>	



FEATURES

- ▶ Captive suitcase type latches ensure tight seal and reduce installation time and maintenance.
- ▶ NSF/ANSI Standard 2–Splash Zone certified.
- ▶ UL listed as fluorescent fixture suitable for wet location¹ when ordered with factory-installed watertight hubs.
- ▶ Dust and moisture resistant.
- ▶ Seamless thermo-set polyurethane gasket poured and formed in place to ensure tight seal.
- ▶ Ballast(s) secured by two captive bolts and nuts to ensure a tight, reliable fit for maximum heat dissipation.
- ▶ This fixture is proudly made in the USA.



SPECIFICATIONS

Enclosure – Outer housing consists of polyester reinforced fiberglass. Internal brass studs secure channel to outer housing.

Internal Housing – 22-gauge die-formed C.R.S.

Latching – Injection-molded suitcase type latches.

Reflective Surfaces – 92% minimum average reflective white polyester powder coat bonded to phosphate-free, multi-stage pretreated metal. All parts painted after fabrication to facilitate installation, increase efficiency, and inhibit corrosion.

Shielding – High-impact acrylic with DR additive. Internal stipple surface diffuses lamp image.

Electrical – Electronic ballast standard, instant start T8, program start T5, rated Class P.

Mounting – Surface or suspended.

Labels & Certifications – UL/CUL listed as fluorescent luminaire suitable for dry or damp locations. UL/CUL listed as suitable for wet locations when specified with WET/_ or WTT/_ option.¹ NSF/ANSI Standard 2–Splash Zone certified.

ORDERING INFORMATION

SERIES	92 Fully Enclosed Industrial–5" Deep
NOMINAL LENGTH	2 2' 4 4' 8 8'
TOTAL LAMPS	1, 2, 3, 4, or 6 (1-, 2-, or 3-lamp cross-section)
LAMP WATTAGE/TYPE	17 2', 17-watt T8 28T5S 4', 28-watt T5 (1- or 2-lamp ballast[s] only) 32 4', 32-watt T8 54T5H 4', 54-watt T5HO (1- or 2-lamp cross-section only) 59 8', 59-watt T8 (1- or 2-lamp cross-section only) 86 8', 86-watt T8 (1- or 2-lamp cross-section only)
SHIELDING	A High-impact clear acrylic with internal stipple (standard) DR 50% DR high-impact diffuser PC 100% polycarbonate prismatic diffuser (not available in 8' units)

OPTIONS/ACCESSORIES (Continued)	TP ² Injection-molded tamper-resistant latches ² SS LATCH Stainless steel latches TP/SS LATCH ² Tamper-resistant stainless steel latches ² TP/PC LATCH ² Tamper-resistant polycarbonate latches ² SSMB Stainless steel ceiling mounting brackets (2 per fixture) SSMB/VBY/_ Stainless steel mounting brackets with Y-hangers and suspension chain (2 per fixture) (specify length of chain)
BALLAST TYPE	EB1 1-lamp electronic ballast EB2 2-lamp electronic ballast EB3 3-lamp electronic ballast EB4 4-lamp electronic ballast EB4/2 (1) 4-lamp and (1) 2-lamp electronic ballast
VOLTAGE	120 120V 277 277V UNV 120-277V 347 347V

OPTIONS/ACCESSORIES	For generic EM ballast options (must specify voltage), see Fluorescent Information section.
WET/1 ¹	(1) 1/2" watertight hub (factory-installed in end of housing) ¹
WET/2 ¹	(2) 1/2" watertight hubs (factory-installed in ends of housing) ¹
WTT/1 ¹	(1) 1/2" watertight hub (factory-installed in back of housing) ¹
WTT/2 ¹	(2) 1/2" watertight hubs (factory-installed in back of housing) ¹

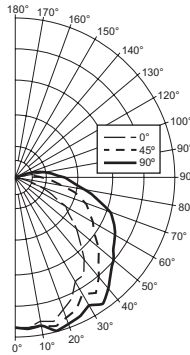
¹ When specifying EM option, EM ballast for enclosed and gasketed fixtures is required for fixture to be suitable for wet locations. Wet location cord sets are yellow.

² This option requires a tamper-resistant tool (must be ordered separately). Please specify quantity required per project.

PHOTOMETRY

TEST REPORT INFORMATION

- ▶ Test Report #: 7849.0
- ▶ Date: 03/04/94
- ▶ Lamp Type: F32T8/735/RS
- ▶ Lamp Quantity: 2



LUMEN SUMMARY

Zone	Lumens	% Lamp	% Fixture
0 - 30	860.	15.1	20.4
0 - 40	1458.	25.6	34.5
0 - 60	2655.	46.6	62.8
0 - 90	3884.	68.1	92.0
90 - 120	300.	5.3	7.1
90 - 130	317.	5.6	7.5
90 - 150	335.	5.9	7.9
90 - 180	640.	6.0	8.0
Total Luminaire:			
0 - 180	4224.	74.1	100.0

Total Luminaire Optical Efficiency: **74.1%**
IES Spacing Criteria: Across = 1.5, Along = 1.2

CANDLEPOWER DISTRIBUTION

Vertical Angle	Horizontal Angle			Zonal Lumens
	0°	45°	90°	
0°	1038.	1038.	1038.	
5°	1039.	1045.	1051.	99.6
15°	1029.	1064.	1097.	301.8
25°	917.	998.	1056.	458.9
35°	818.	964.	1057.	597.3
45°	630.	807.	923.	613.8
55°	447.	661.	822.	583.3
65°	279.	556.	750.	532.4
75°	138.	449.	596.	428.7
85°	36.	274.	402.	268.7
90°	13.	219.	356.	
95°	9.	158.	280.	164.3
105°	9.	92.	179.	97.3
115°	9.	39.	72.	38.1
125°	9.	21.	31.	17.5
135°	9.	13.	19.	10.5
145°	9.	11.	17.	7.4
155°	9.	11.	11.	4.7
165°	0.	0.	0.	.0
175°	0.	0.	0.	.0
180°	0.	0.	0.	

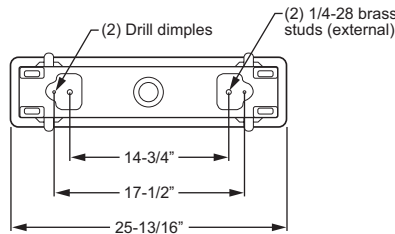
ZONAL CAVITY COEFFICIENTS

Room Cavity Ratio	Ceiling			Wall			Floor		
	.80	.70	.50	.80	.70	.50	.30	.20	.10
0	.87	.87	.87	.84	.84	.84	.79	.79	.79
1	.78	.74	.70	.75	.72	.68	.67	.65	.62
2	.70	.64	.58	.68	.62	.57	.58	.54	.50
3	.64	.56	.49	.62	.54	.48	.51	.46	.42
4	.58	.49	.42	.56	.48	.41	.45	.40	.35
5	.53	.43	.36	.51	.42	.35	.40	.34	.30
6	.49	.39	.32	.47	.37	.31	.36	.30	.26
7	.45	.35	.28	.43	.34	.27	.32	.26	.22
8	.41	.31	.24	.40	.30	.24	.29	.23	.19
9	.38	.28	.21	.37	.27	.21	.26	.20	.16
10	.35	.25	.19	.34	.25	.19	.23	.18	.15

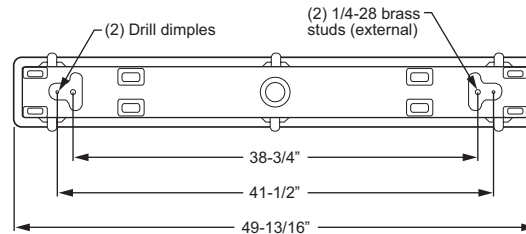
Effective Floor Cavity Reflectance = .20

FIXTURE DETAILS

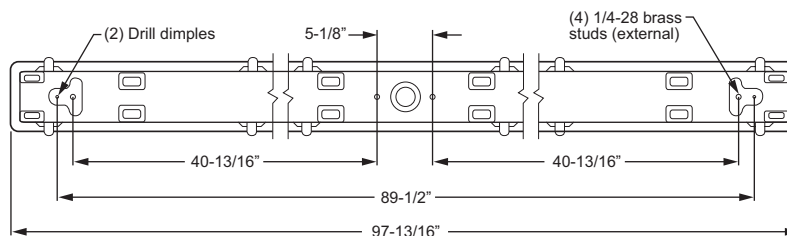
BACK VIEW – 2' LENGTH



BACK VIEW – 4' LENGTH



BACK VIEW – 8' LENGTH



OPTIONS & MOUNTING

<p>Integral 1/4-28 brass stud with nut and lock washer</p> <p>SSMB</p>	<p>"WTT" hub location (factory-installed option)</p> <p>"WET" hub location (factory-installed option)</p>	
<p>SSMB Stainless steel mounting bracket</p>	<p>WTT_ or WTT_ Watertight hubs</p>	<p>SSMB/VBY Stainless steel mounting bracket with Y-hangers</p>