

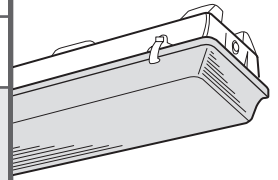
SUBMITTAL:

T5 | T8

JOB:

TYPE:

VOLTAGE:

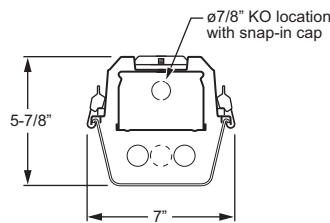


**EXAMPLE** → **93 - 4 - 2 32 - A - OPTIONS - EB2 - UNV**

SERIES      NOMINAL LENGTH      TOTAL WATTAGE/LAMPS      SHIELDING      OPTIONS/ACCESSORIES      BALLAST TYPE      VOLTAGE

**FEATURES**

- ▶ Captive suitcase type latches ensure tight seal and reduce installation time and maintenance.
- ▶ NSF/ANSI Standard 2–Splash Zone certified.
- ▶ UL listed as fluorescent fixture suitable for wet location<sup>1</sup> when ordered with factory-installed watertight hubs.
- ▶ Dust and moisture resistant.
- ▶ Seamless thermo-set polyurethane gasket poured and formed in place to ensure tight seal.
- ▶ Ballast(s) secured by two captive bolts and nuts to ensure a tight, reliable fit for maximum heat dissipation.
- ▶ This fixture is proudly made in the USA.



**SPECIFICATIONS**

**Enclosure** – Outer housing consists of polyester reinforced fiberglass. Internal brass studs secure channel to outer housing.

**Internal Housing** – 20-gauge die-formed, ribbed C.R.S.

**Latching** – Injection-molded suitcase type latches.

**Reflective Surfaces** – 92% minimum average reflective white polyester powder coat bonded to phosphate-free, multi-stage pretreated metal. All parts painted after fabrication to facilitate installation, increase efficiency, and inhibit corrosion.

**Shielding** – High-impact acrylic with DR additive. Internal stipple surface diffuses lamp image.

**Electrical** – Electronic ballast standard, instant start T8, program start T5, rated Class P.

**Mounting** – Surface or suspended.

**Labels & Certifications** – UL/CUL listed as fluorescent luminaire suitable for dry or damp locations. UL/CUL listed as suitable for wet locations when specified with WET/\_ or WTT/\_ option.<sup>1</sup> NSF/ANSI Standard 2– Splash Zone certified.

<sup>1</sup> When specifying EM option, EM ballast for enclosed and gasketed fixtures is required for fixture to be suitable for wet locations. Wet location cord sets are yellow.

<sup>2</sup> This option requires a tamper-resistant tool (must be ordered separately). Please specify quantity required per project.

**ORDERING INFORMATION**

**SERIES**  
**93** Fully Enclosed Industrial–6" Deep

**NOMINAL LENGTH**  
**4** 4'  
**8** 8'

**TOTAL LAMPS**  
**1, 2, 3, 4, or 6** (1-, 2-, or 3-lamp cross-section)

**LAMP WATTAGE/TYPE**  
**28T5S** 4', 28-watt T5 (1- or 2-lamp ballast[s] only)  
**32** 4', 32-watt T8  
**54T5H** 4', 54-watt T5HO (1- or 2-lamp cross-section only)  
**59** 8', 59-watt T8 (1- or 2-lamp cross-section only)  
**86** 8', 86-watt T8 (1- or 2-lamp cross-section only)

**SHIELDING**  
**A** High-impact clear acrylic with internal stipple (standard)  
**DR** 50% DR high-impact diffuser  
**PC** 100% polycarbonate diffuser

**OPTIONS/ACCESSORIES**  
 For generic EM ballast options (must specify voltage), see Fluorescent Information section.<sup>1</sup>  
**WET/1<sup>1</sup>** (1) 1/2" watertight hub (factory-installed in end of housing)<sup>1</sup>  
**WET/2<sup>1</sup>** (2) 1/2" watertight hubs (factory-installed in ends of housing)<sup>1</sup>  
**WTT/1<sup>1</sup>** (1) 1/2" watertight hub (factory-installed in back of housing)<sup>1</sup>  
**WTT/2<sup>1</sup>** (2) 1/2" watertight hubs (factory-installed in back of housing)<sup>1</sup>

**OPTIONS/ACCESSORIES (Continued)**

**TP<sup>2</sup>** Injection-molded tamper-resistant latches<sup>2</sup>  
**SS LATCH** Stainless steel latches  
**TP/SS LATCH<sup>2</sup>** Tamper-resistant stainless steel latches<sup>2</sup>  
**TP/PC LATCH<sup>2</sup>** Tamper-resistant polycarbonate latches<sup>2</sup>  
**SSMB** Stainless steel ceiling mounting brackets (2 per fixture)  
**SSMB/VBY/\_** Stainless steel mounting brackets with Y-hangers and suspension chain (2 per fixture) (specify length of chain)

**BALLAST TYPE**  
**EB1** 1-lamp electronic ballast  
**EB2** 2-lamp electronic ballast  
**EB3** 3-lamp electronic ballast  
**EB4** 4-lamp electronic ballast  
**EB4/2** (1) 4-lamp and (1) 2-lamp electronic ballast

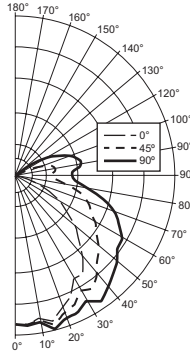
**VOLTAGE**  
**120** 120V  
**277** 277V  
**UNV** 120-277V  
**347** 347V

## PHOTOMETRY

Catalog #: 93-4-232-A-EB2

### TEST REPORT INFORMATION

- ▶ Test Report #: 7853.0
- ▶ Date: 03/08/94
- ▶ Lamp Type: F32T8/735/RS
- ▶ Lamp Quantity: 2



### LUMEN SUMMARY

Zone	Lumens	% Lamp	% Fixture
0 - 30	819.	14.4	18.1
0 - 40	1387.	24.3	30.6
0 - 60	2549.	44.7	56.2
0 - 90	3788.	66.4	83.5
90 - 120	642.	11.3	14.2
90 - 130	712.	12.5	15.7
90 - 150	742.	13.0	16.4
90 - 180	748.	13.1	16.5
<b>Total Luminaire:</b>			
0 - 180	4535.	79.6	100.0

Total Luminaire Optical Efficiency: **79.6%**  
IES Spacing Criteria: Across = 1.5, Along = 1.2

### CANDLEPOWER DISTRIBUTION

Vertical Angle	Horizontal Angle			Zonal Lumens
	0°	45°	90°	
0°	982.	982.	982.	
5°	988.	992.	999.	94.6
15°	999.	1023.	1054.	290.3
25°	879.	942.	997.	434.5
35°	786.	904.	1006.	567.4
45°	594.	770.	913.	589.3
55°	426.	650.	826.	572.6
65°	259.	550.	762.	527.7
75°	123.	460.	622.	437.0
85°	31.	282.	411.	274.1
90°	14.	237.	369.	
95°	11.	238.	369.	229.9
105°	11.	155.	442.	251.4
115°	9.	55.	337.	160.6
125°	9.	20.	193.	70.2
135°	9.	15.	60.	20.4
145°	9.	10.	24.	9.8
155°	9.	0.	15.	5.2
165°	0.	0.	0.	.0
175°	0.	0.	0.	.0
180°	0.	0.	0.	

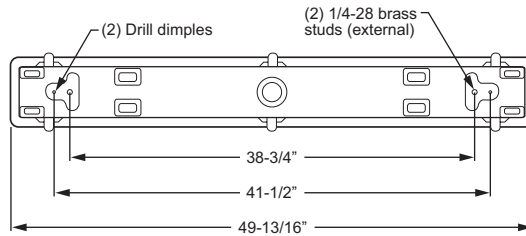
### ZONAL CAVITY COEFFICIENTS

	Ceiling			Wall			Floor			
	.80	.70	.50	.30	.70	.50	.30	.50	.30	.10
Room Cavity Ratio	0	.92	.92	.92	.88	.88	.88	.81	.81	.81
	1	.82	.78	.74	.79	.75	.71	.69	.66	.64
	2	.74	.67	.61	.71	.64	.59	.59	.55	.51
	3	.67	.59	.52	.64	.56	.50	.52	.47	.43
	4	.62	.52	.44	.59	.50	.43	.46	.40	.36
	5	.56	.45	.38	.53	.44	.37	.40	.35	.30
	6	.51	.40	.33	.49	.39	.32	.36	.30	.26
	7	.47	.36	.29	.45	.35	.28	.32	.27	.22
	8	.44	.32	.26	.42	.31	.25	.29	.23	.19
	9	.40	.29	.22	.38	.28	.22	.26	.21	.17
	10	.37	.27	.20	.36	.26	.20	.24	.18	.15

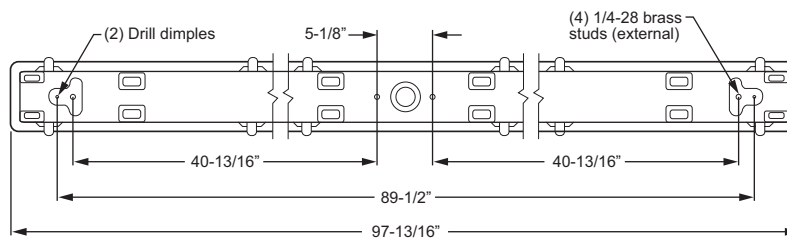
Effective Floor Cavity Reflectance = .20

## FIXTURE DETAILS

### BACK VIEW – 4' LENGTH



### BACK VIEW – 8' LENGTH



### OPTIONS & MOUNTING

<p><b>SSMB</b> Stainless steel mounting bracket</p>	<p><b>WET_ or WTT_</b> Watertight hubs</p>	<p><b>SSMB/VBY</b> Stainless steel mounting bracket with Y-hangers</p>