

EMERGENCY LIGHT WITH ADJUSTABLE HEADS

EMER

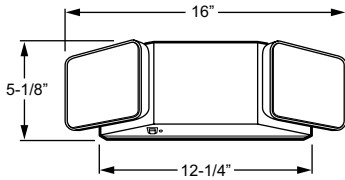
CATALOG #:	TYPE:
PROJECT:	NOTES:



EXAMPLE → **EMER** - **WHT** - **OPTIONS** - **D**

SERIES HOUSING COLOR OPTIONS/ACCESSORIES VOLTAGE

CROSS SECTION



ORDERING INFORMATION

SERIES	
EMER	Emergency Light with Adjustable Heads
HOUSING COLOR	
BLK	Black
WHT	Industry-standard white
OPTIONS	
RC	Remote capable
SDT	Self-diagnostic test
HTR	Internal heater (not available with RC)

ACCESSORIES (Shipped separately)	
See back for details.	
Additional remote heads available (RC only), see Technical Info.	
RH	5.4-watt single remote head, industry-standard white color (RC only)
DRH	10.8-watt dual remote head, industry-standard white color (RC only)
PC3	Polycarbonate shield
WG/COMBO	Wireguard
VOLTAGE	
D	120V or 277V
SV__	Special voltage, consult factory for options

FEATURES

- ▶ 6-volt, sealed lead acid, maintenance-free battery provides 90 minutes of emergency operation.
- ▶ Fully automatic solid-state system recharges battery in 24 hours.
- ▶ Automatic, low voltage disconnect (LVD) activates unit in event of partial power failure or brownout.
- ▶ Built-in test switch.
- ▶ Charge rate/power on LED indicator light.
- ▶ Two fully adjustable, glare-free lighting heads with 5.4-watt incandescent lamps.
- ▶ Smooth thermoplastic reflector and plastic lens for optimal light distribution.
- ▶ Up to 11 watts remote capability optional.



SPECIFICATIONS

Housing – Injection-molded, engineering-grade, 5VA flame retardant, high-impact resistant, thermoplastic.

Electrical – Universal voltage, 120 or 277 VAC operation.

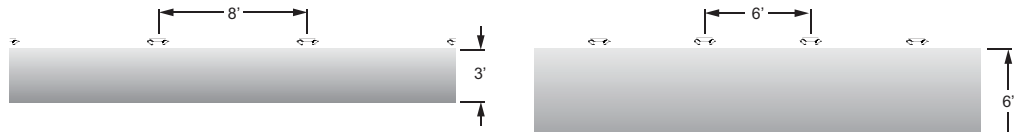
Mounting – Wall. Top and back knockouts for conduit application.

Labels – Listed to UL 924 standard as an emergency light suitable for dry or damp locations (20°C - 50°C). Meets NFPA 101 Life Safety Code, NEC, OSHA, Local and State Codes.

Warranty – 5-year limited warranty

FOOTPATH

Meets Life Safety Code: Average illuminance of 1.0 FC with minimum illuminance of 0.1 FC. Reflectance values: 80/50/20



Average: 1.2 | Max: 1.2 | Min: 1.0 | Average min: 1.2 | Max/Min: 1.2

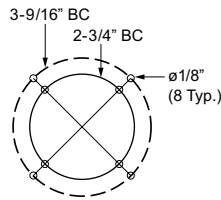
Average: 1.1 | Max: 1.6 | Min: 1.0 | Average min: 1.4 | Max/Min: 1.6

ELECTRICAL INFORMATION

CATALOG NUMBER	MAXIMUM REMOTE CAPACITY (W)	INPUT WATTS (W)		INPUT AMPS (A)	
		120V	277V	120V	277V
EMER	-	4.0	5.0	0.040	0.020
EMER-SDT	-	4.5	4.5	0.040	0.030
EMER-RC	11.0	4.1	4.6	0.037	0.018

FIXTURE DETAILS

BOLT CIRCLE PATTERN



ACCESSORIES

