

CATALOG #: \_\_\_\_\_

TYPE: \_\_\_\_\_

PROJECT: \_\_\_\_\_

**FEATURES**

- Frosted prismatic lens provides pleasing diffused light without LED pixelation
- Fully-enclosed spring-loaded cam latches provide hassle-free room side maintenance
- Triple gasketing and inverted lens options for smooth surface room side
- T-slot steel hinge ensures positive retention when door is opened
- Back reinforcement ribs provide added strength
- Rolled-edge channel adds superior strength
- Integral T-bar clips quickly secure fixture to structure. (2x2 and 2x4 only)
- Maximize energy savings with efficacies as high as to 139 lm/W
- Rated for direct contact with insulation
- Fully gasketed door protects against contaminants
- Made Right Here® in the USA

**SPECIFICATIONS**

- HOUSING – 22-gauge die-formed C.R.S.
- DOOR FRAME – 20-gauge C.R.S. or .050” extruded aluminum, flat or regressed, with mitered corners. T-slot steel hinge allows reversible hinging and latching. Fully enclosed spring-loaded cam latches.
- SHIELDING – Frosted acrylic, pattern #12, .125” thick.
- FINISH – 92% minimum average reflective white polyester powder coat bonded to phosphate-free, multi-stage pretreated metal. All parts painted after fabrication to facilitate installation, increase efficiency, and inhibit corrosion.
- ELECTRICAL – High quality mid-power LED board. L70 at 50,000 hours. 25°C maximum ambient operating temperature.
- MOUNTING – NEMA Type “G” standard. NEMA Type “F” available.
- LISTINGS –
  - cETLus conforms to UL STD 1598. Certified to CAN/CSA STD C22.2 No. 250.0. Suitable for damp locations
  - DesignLights Consortium qualified product. Not all versions of this product may be DLC qualified, see the DLC Qualified Products List at [www.designlights.org/QPL](http://www.designlights.org/QPL)
  - IC-rated for direct contact with insulation
  - City of Chicago Environmental Air approved when specified with CP option
- WARRANTY – 5-year limited warranty, see [hew.com/warranty](http://hew.com/warranty).

**ORDERING EXAMPLE: 50 G - S 2 4 - L130/840 - S - AF12125 - OPTIONS - DIM - UNV**

**ORDERING INFO**

SERIES	CEILING TYPE	FIXTURE STYLE	WIDTH	LENGTH	LUMENS <sup>[1]</sup>
50	G NEMA Type “G”	S Full door frame–no reveal	1 1’ <sup>[3]</sup>	2 2’ <sup>[4]</sup>	1x4
			2 2’	4 4’	L27 2,700lm L45 4,500lm L65 6,500lm
	F NEMA Type “F” <sup>[2]</sup>		2x2		
			L26 2,600lm L43 4,300lm L65 6,500lm		
				2x4	
				L33 3,300lm L59 5,900lm L90 9,000lm L130 13,000lm	

CRI	CCT	DOOR FRAME	SHIELDING
8 80	27 2700K	S White flat steel	AF12125 Frosted acrylic, pattern #12, .125” thick
9 90 <sup>[5]</sup>	30 3000K	F White flat aluminum	AF19156 Frosted acrylic, pattern #19, .156” thick
	35 3500K	R White regressed aluminum	A12125 Clear acrylic, pattern #12, .125” thick
	40 4000K	SB Black flat steel	A19156 Clear acrylic, pattern #19, .156” thick
	50 5000K	FB Black flat aluminum	PC12187 Polycarbonate, pattern #12, .187” thick
		RB Black regressed aluminum	

OPTIONS <sup>[6]</sup>	CONTROL <sup>[7]</sup>	VOLTAGE
EM/10W 10-watt emergency battery	DIM Dimming driver	120 120V
DG Double gasket <sup>[8]</sup>	DRV Non-dimming driver	277 277V
TG Triple gasket <sup>[9]</sup>		UNV 120-277V
EQCLIPS Earthquake clips <sup>[10]</sup>		347 347V <sup>[13]</sup>
(L___) Additional lower lumen packages available. <sup>[11]</sup> Example: 8,500 nominal lumens = 50G-S24-L90/850-(L85).		
WET UL/CUL listed for wet location under covered ceiling. <sup>[12]</sup>		
CP Chicago Plenum (CCEA)		

**NOTES**

- <sup>1</sup> Lumen output based on 3500 CCT, 80 CRI. Actual lumens may vary +/-5%, see page 2 for FIXTURE PERFORMANCE DATA. Additional lumen package available, see options
- <sup>2</sup> See page 3 for NEMA TYPE “F” INSTALLATION.
- <sup>3</sup> 4’ length only
- <sup>4</sup> 2’ width only
- <sup>5</sup> Extended lead times may apply. Consult factory for availability.
- <sup>6</sup> See page 4 for FLEXIBLE WHIP OPTIONS.
- <sup>7</sup> See page 2 for ADDITIONAL CONTROL OPTIONS.
- <sup>8</sup> Flat aluminum door only. See page 3 for GASKETING DETAILS.
- <sup>9</sup> Flat aluminum door only; field installed. See page 3 for GASKETING DETAILS.
- <sup>10</sup> 4 per fixture. NEMA Type “G” only.
- <sup>11</sup> Specify in increments of 100 nominal lumens. Option must be specified with next higher lumen package.
- <sup>12</sup> Flat aluminum door only, TG option included
- <sup>13</sup> Not available with EM drivers



## FIXTURE PERFORMANCE DATA

	LED PACKAGE	DELIVERED LUMENS	WATTAGE	EFFICACY (lm/W)
1x4	L27	2637	20.1	131.0
	L45	4311	33.7	127.8
	L65	6563	55.7	117.9
2x2	L26	2630	21.3	123.6
	L43	4363	33.7	129.3
	L65	6513	54.4	119.7
2x4	L33	3469	24.9	139.3
	L59	6231	48.0	129.7
	L90	9106	67.1	135.6
	L130	13116	101.2	129.6

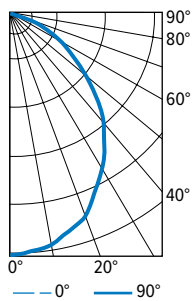
## MULTIPLIER TABLE

		COLOR TEMPERATURE	
		CCT	CONVERSION FACTOR
80 CRI	2700K		0.97
	3000K		0.99
	3500K		1.00
	4000K		1.03
	5000K		1.06
90 CRI	2700K		0.80
	3000K		0.82
	3500K		0.83
	4000K		0.86
	5000K		0.89

- Photometrics tested in accordance with IESNA LM-79. Results shown are based on 25°C ambient temperature.
- Wattage shown is average for 120V through 277V input.
- Results based on 3500K, 80 CRI, actual lumens may vary +/-5%
- Use multiplier table to calculate additional options.

## PHOTOMETRY

50G-S24-L130/835-SAF12125-DIM-UNV Total Luminaire Output: 13116 lumens; 101.2 Watts | Efficacy: 129.6 lm/W | 83.8 CRI; 4012K CCT



VERTICAL ANGLE	HORIZONTAL ANGLE			ZONAL LUMENS
	0°	45°	90°	
0	5906	5906	5906	
5	5848	5839	5837	555
15	5508	5508	5517	1559
25	4856	4865	4872	2249
35	4025	4015	4031	2512
45	3124	3080	3037	2356
55	2091	2021	1959	1810
65	1239	1165	1149	1183
75	615	589	621	659
85	207	207	244	232
90	0	0	0	

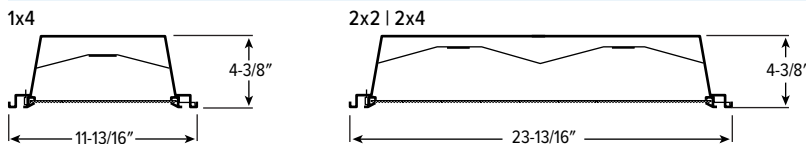
LUMEN SUMMARY	ZONE	LUMENS	% FIXTURE
	0 - 30	4363	33
	0 - 40	6875	52
	0 - 60	11042	84
	0 - 90	13116	100
	0 - 180	13116	100

## ADDITIONAL CONTROL OPTIONS

Note: Lumen restrictions apply, consult product builder at hew.com/product-builder.

CATALOG NUMBER	DESCRIPTION
DRV	Driver prewired for non-dimming applications
DIM	Dimming driver prewired for 0-10V low voltage applications
DIM1	1% dimming driver prewired for 0-10V low voltage applications
DIM LINE	Line voltage dimming driver (Must specify 120V or 277V only)
SD40	40% step-dimming driver
SD50	50% step-dimming driver
DALI	DALI dimming driver
LTE LINE	Lutron Hi-lume 1% 2-wire dimming driver forward phase line voltage controls (120V only)
LDE1	Lutron Hi-lume 1% EcoSystem dimming LED driver
LDE5	Lutron 5-Series 5% EcoSystem dimming LED driver
ELDO SOLOB	EldoLED Solodrive, 0.1% dimming driver for 0-10V controls
ELDO SOLOB DALI	EldoLED Solodrive, 0.1% dimming driver for DALI controls
ELDO ECO1	EldoLED Ecodrive, 1% dimming driver for 0-10V controls
ELDO ECO1 DALI	EldoLED Ecodrive, 1% dimming driver for DALI controls

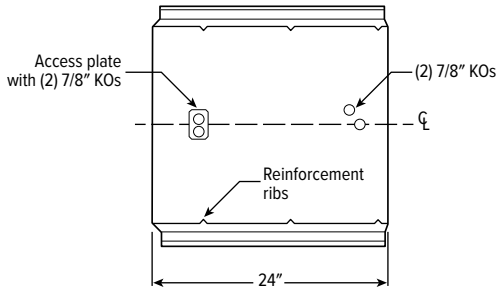
## CROSS SECTIONS



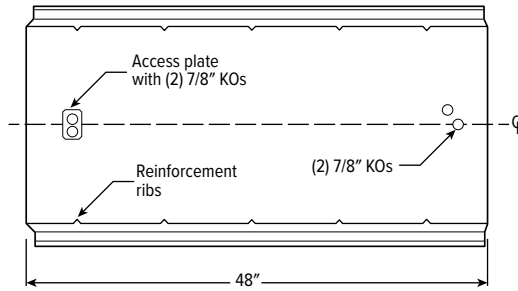
## FIXTURE DETAILS

### BACKVIEW

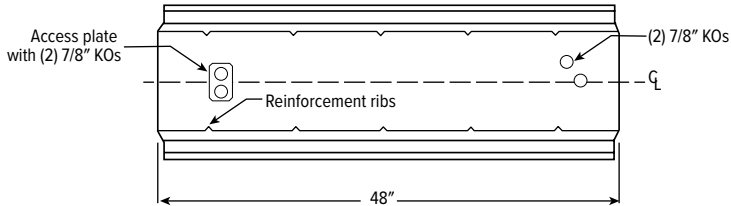
2x2



2x4

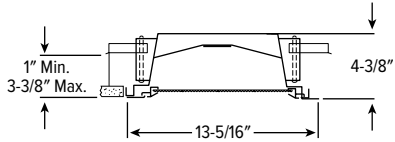


1x4

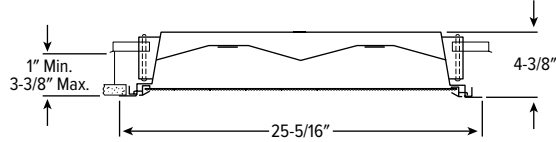


## NEMA TYPE "F" INSTALLATION

1x4



2x2 | 2x4

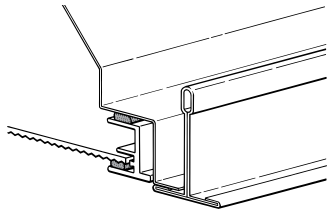


Note: Maximum recommended ceiling opening is 12-3/8" x 48-3/8". For continuous row mounting, add 49-5/16" for each additional fixture to obtain ceiling opening. 1-5/16" between end plates.

Note: Maximum recommended ceiling opening is 24-3/8" x 24-3/8" for 2'x2' and 24-3/8" x 48-3/8" for 2'x4'. For continuous row mounting, add 49-5/16" for each additional fixture to obtain ceiling opening. 1-5/16" between end plates.

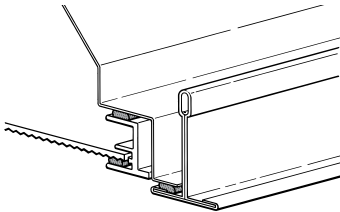
## GASKETING DETAILS

### DOUBLE GASKETING (DG)



Gasketing is factory-installed continuously between door frame and luminaire housing; and between door frame and lens.

### TRIPLE GASKETING



Gasketing is factory-installed continuously between door frame and luminaire housing; and between door frame and lens. Gasketing between bottom perimeter of unit (adjacent to T-bar or hardpan ceiling) is provided by factory and field installed.



## FLEXIBLE WHIP OPTIONS

All Williams recessed troffers are available with a flexible metallic wiring harness, factory-attached and hard-wired to the luminaire. See ordering information table.

Straight connectors are a snap-in type. Consult factory for wiring harness utilizing connectors secured by lock nuts, optional flex size, lengths, and other wire sizes or circuitry. Three-wire flex utilizes black, white, and green wire. Four-wire flex utilizes black, white, red, and green wire. Adding an emergency option requires an additional wire.

Williams fixtures are UL listed to provide factory-installation of several manufacturers' modular wiring devices. Consult factory for availability and ordering information.

DESIGNATION	DESCRIPTION	DRIVER
F338	6' of 3/8" flex, (3) No. 18 AWG wires with (2) straight connectors	DRV, LTE LINE
F348	6' of 3/8" flex, (4) No. 18 AWG wires with (2) straight connectors	SD40
F334	6' of 3/8" flex, (3) No. 14 AWG wires with (2) straight connectors	DRV, LTE LINE
F344	6' of 3/8" flex, (4) No. 14 AWG wires with (2) straight connectors	SD40
F358	6' of 3/8" flex, (5) #18 AWG wires with (2) straight connectors	DIM, DALI

