

EMERGENCY LIGHT WITH ADJUSTABLE MR16 LAMPS

EMER/MR16

CATALOG #:	TYPE:
------------	-------

PROJECT:	NOTES:
----------	--------

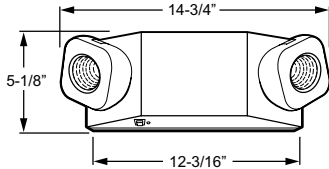
EXAMPLE → **EMER/MR16 - WHT - OPTIONS - D**

▼
▼
▼
▼

SERIES HOUSING COLOR OPTIONS VOLTAGE



CROSS SECTION



ORDERING INFORMATION

SERIES
EMER/MR16 Emergency Light with Adjustable MR16 lamps

HOUSING COLOR (Must specify)
BLK Black
WHT Industry-standard white

OPTIONS
SDT Self-diagnostic test
RC Remote capable
HTR Internal heater (not available with RC)

ACCESSORIES (Shipped separately)
 See back for details.
 Additional remote heads available (RC only), see [Technical Info](#).
MR16RH 5-watt MR16 single remote head industry-standard white color (RC only)
MR16DRH 10-watt MR16 dual remote head industry-standard white color (RC only)
PC3 Polycarbonate shield
WG Wireguard

VOLTAGE
D 120V or 277V
SV__ Special voltage, consult factory for options (not available with SDT)

FEATURES

- ▶ 6-volt, sealed lead acid, maintenance-free battery provides 90 minutes of emergency operation.
- ▶ Fully automatic solid-state system recharges battery in 24 hours.
- ▶ Automatic, low voltage disconnect (LVD) activates unit in event of partial power failure or brownout.
- ▶ Built-in test switch.
- ▶ Charge rate/power on LED indicator light.
- ▶ Available with industry-standard white or black housing.
- ▶ Two fully adjustable, glare-free 5-watt MR16 Halogen lamp heads.
- ▶ Up to 10-watts remote capability optional.



SPECIFICATIONS

Housing – Injection-molded, engineering-grade, 5VA flame retardant, high-impact resistant, thermoplastic

Electrical – Universal voltage, 120 or 277 VAC operation.

Mounting – Wall mount. Top and side knockout for conduit applications.

Labels – Listed to UL 924 standard as an emergency light suitable for dry or damp locations (20°C - 40°C). Meets NFPA 101 Life Safety Code, NEC, OSHA, Local and State Codes.

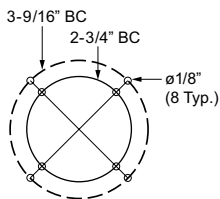
Warranty – 5-year limited warranty

ELECTRICAL INFORMATION

Catalog Number	Maximum Remote Capacity (W)		Input Watts (W)		Input Amps (A)	
	5W Halogen	3W LED	120V	277V	120V	277V
EMER/MR16	-	-	3.5	4.9	0.031	0.019
EMER/MR16-SDT	-	-	4.5	4.5	0.040	0.030
EMER/MR16-RC	10	13	3.7	4.2	0.039	0.022

FIXTURE DETAILS

BOLT CIRCLE PATTERN



ACCESSORIES

PC3	WG	MR16RH	MR16DPRH