

6" ROUND VERTICAL LAMP DOWNLIGHT – IC-RATED

ICPV60

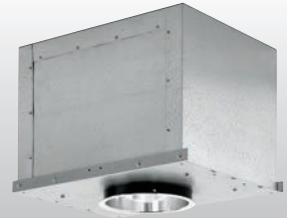
CFL

CATALOG #: _____ TYPE: _____

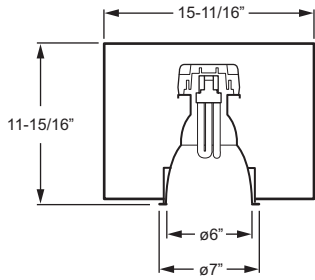
PROJECT: _____ NOTES: _____

EXAMPLE **ICPV60 - 1 32T - CS - NB - OPTIONS - EB1 - UNV**

SERIES NUMBER OF LAMPS WATTAGE/TYPE REFLECTOR FINISH MOUNTING OPTIONS BALLAST TYPE VOLTAGE



CROSS SECTION



FEATURES

- ▶ For use in direct contact with insulation.
- ▶ Integral pan throat field-adjusts to accommodate ceilings up to 2" thick.
- ▶ Self-flanged aluminum reflector prevents light leaks and is available in assorted colors.
- ▶ Optional residential electronic ballast (EBR) complies with Class B, FCC Part 18, non-commercial requirements.
- ▶ Optional wall wash (WW) optics are field-adjustable with up to 359° rotation.
- ▶ Airtight option (ATH) complies with ASTM-E283 standards; meets Washington State Energy Code.
- ▶ Mounting choices (must specify) include hanger brackets with bar hangers, nailer bars, or T-bar hangers.
- ▶ This fixture is proudly made in the USA.

ORDERING INFORMATION

SERIES
ICPV60 6" Round Vertical Lamp Downlight-IC Rated

LAMP OPTIONS

# OF LAMPS	WATTAGE/TYPE
1	130 ¹ , 180, 260, 26T, 32T, or 42T ¹

¹ Not available with dimming or residential dimming ballasts.

REFLECTOR FINISH

CS	Clear semi-specular (standard)
SPC	Clear specular
CG	Champagne gold
GD	Gold
PW	Pewter
SG	Satin-glow
STR	Straw
WH	Painted white reflector, textured
WT	Wheat

MOUNTING

HB	(2) Hanger brackets with (2) bar hangers (rigid bar mounting)
NB	(2) Nailer bars (wood joist mounting)
TB	(2) T-Bar hangers (grid ceiling mounting)

OPTIONS

F	Fuse (must specify voltage)
MWT	Matte white trim
MB	Micro-baffle
LD	Luminous disk
LDO	Luminous disk open
LR	Luminous ring
ATH	Airtight housing
WW	Wall wash
CP	Chicago Plenum (CCEA)

BALLAST TYPE

EB1	1-lamp electronic ballast
EBR1	1-lamp residential electronic ballast (120V only, must specify)
EBD1*__	1-lamp electronic dimming ballast (must specify 120V or 277V only; available with 18-, 26-, or 32-watt only; must specify manufacturer, see Technical Info for dimming ballast options)
EBDR1*__	1-lamp residential electronic dimming ballast (must specify 120V or 277V only; available with 18-, 26-, or 32-watt only; must specify manufacturer, see Technical Info for dimming ballast options)

VOLTAGE (Must specify)

120	120V
277	277V
UNV	120-277V

ICPV60

6" ROUND VERTICAL LAMP DOWNLIGHT – IC-RATED

CFL

PHOTOMETRY INFORMATION

Catalog #: ICPV60-132T-120-SPC

SPECIFICATIONS

Housing – 22-gauge galvanized steel housing with 20-gauge pan and adjustable throat.

Inner Housing Finish – Black TGIC polyester powder coat bonded to phosphate-free, multi-stage pretreated metal.

Reflector – Low-iridescent aluminum. Clear semi-specular (CS) finish standard.

Electrical – Electronic ballast. Prewired at factory for easy field installation.

Mounting – Recessed.

Housing size: 15-11/16" x 12-1/4" x 11-15/16"
Ceiling cutout: ø6-1/2"

Labels –

- UL/CUL listed as suitable for through-branch circuit wiring and direct contact with insulation. Suitable for damp locations.
- City of Chicago Environmental Air approved when specified with CP option.

Warranty – 5-year limited warranty, see hew.com/warranty.

TEST REPORT INFORMATION

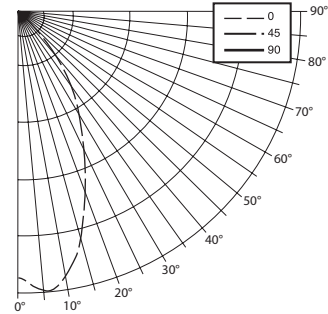
- Test Report #: 12999.0
- Date: 03/07/06
- Lamp Type: CFM32W/GX24q/35
- Lamp Quantity: 1
- Rated Lumens: 2400.

DESCRIPTION

- 1/32W Syl Triple CF
- 6" Diameter IC Rated Compact Fluorescent Downlight
- Low-Irrescence Clear Specular Reflector
- Advance Ballast #ICF-2S26-M1-BS

CANDLEPOWER DISTRIBUTION

Vertical Angle	Average Candela	Zonal Lumens
0°	1170.	
5°	1235.	117.9
15°	1039.	294.4
25°	668.	309.3
35°	403.	252.9
45°	114.	88.5
55°	1.	.9
65°	0.	.0
75°	0.	.0
85°	0.	.0
90°	0.	.0



LUMEN SUMMARY

Zone	Lumens	% Lamp	% Fixture
0 - 30	722.	30.1	67.8
0 - 40	975.	40.6	91.6
0 - 60	1064.	44.3	100.0
0 - 90	1064.	44.3	100.0
Total Luminaire:			
0 - 180	1064.	44.3	100.0
IES Spacing Criteria: Diagonal = .8			
Across = .6			

ZONAL CAVITY COEFFICIENTS

	Ceiling									
	.80	.70		.50		.30		.10		
Room Cavity Ratio	Wall	.70	.50	.30	.70	.50	.30	.50	.30	.10
	0	.53	.53	.53	.52	.52	.52	.49	.49	.49
1	.51	.49	.48	.49	.48	.48	.47	.46	.45	
2	.48	.46	.44	.47	.45	.44	.44	.43	.42	
3	.46	.43	.41	.45	.43	.41	.41	.40	.39	
4	.44	.40	.38	.43	.40	.38	.39	.37	.36	
5	.41	.38	.35	.41	.37	.35	.37	.35	.33	
6	.40	.36	.33	.39	.35	.33	.35	.33	.31	
7	.38	.34	.31	.37	.33	.31	.33	.31	.29	
8	.35	.31	.29	.35	.31	.29	.31	.28	.27	
9	.33	.29	.27	.33	.29	.26	.29	.26	.25	
10	.32	.27	.25	.31	.27	.25	.27	.24	.23	

Effective Floor Cavity Reflectance = .20

QUANTITY ESTIMATOR

Room Size	±25 fc.	±50 fc.	±75 fc.
10' x 10' (100 sq. ft.)	3	6	10
20' x 20' (400 sq. ft.)	13	26	38
30' x 30' (900 sq. ft.)	29	58	87

Calculations based on standard reflectance of 80/50/20 and a light loss factor of 1.0 with a 10'-0" ceiling height.

LAMP BASE DATA	
WATTAGE	BASE
13Q	G24q-1
18Q	G24q-2
26Q	G24q-3
26T	GX24q-3
32T	GX24q-3
42T	GX24q-4

REFLECTOR FINISH MULTIPLIER		
CATALOG NUMBER	REFLECTOR FINISH	CONVERSION FACTOR
CS	Clear semi-specular	1.00
SPC	Clear specular	1.02
CG	Champagne Gold	0.96
GD	Gold	0.93
PW	Pewter	0.86
SG	Satin-glow	0.83
STR	Straw	0.97
WH	White, textured	0.90
WT	Wheat	0.88
MB	Micro-baffle	0.60

