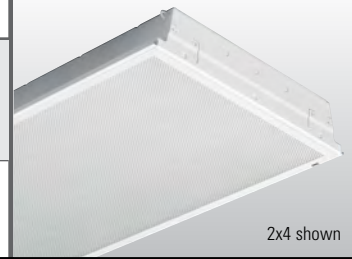


# IC RATED STATIC TROFFER

# 501C

## T5 | T8

CATALOG #:	TYPE:
PROJECT:	NOTES:

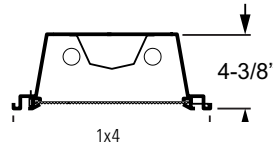
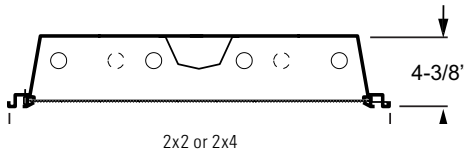


EXAMPLE

**501C G - S 2 4 - 3 32 - S A12125 - OPTIONS - EB3 - UNV**

SERIES CEILING TYPE FIX. NOM. NOM. TOTAL WATTAGE/ DOOR SHIELDING OPTIONS BALLAST VOLTAGE  
TYPE STYLE W. L. LAMPS TYPE FRAME TYPE TYPE TYPE TYPE TYPE

## CROSS SECTIONS



## ORDERING INFORMATION

**SERIES**  
**501C** IC Rated Static Troffer (no air handling)

**CEILING TYPE**  
**G** NEMA Type "G"  
**F** NEMA Type "F"

**FIXTURE STYLE**  
**S** Full door frame—no reveal

**NOMINAL WIDTH**  
**1** 1'  
**2** 2'

**NOMINAL LENGTH**  
**2** 2' (2' width only)  
**4** 4'

**TOTAL LAMPS**  
**2** (1' x 4' only)  
**2 or 3** (2' x 2' only)  
**2, 3, or 4** (2' x 4' only)

**LAMP WATTAGE/TYPE**

**1x4 LAMP OPTIONS**  
**28T5S** 4', 28-watt T5  
**32** 4', 32-watt T8

**2x2 LAMP OPTIONS**  
**14T5S** 2', 14-watt T5 (2 lamps max.)  
**17** 2', 17-watt T8 (3 lamps max.)  
**24T5H** 2', 24-watt T5HO (2 lamps max.)  
**31UN** 2', U-bent, 31-watt T8, 1-5/8" leg spacing (2 lamps max.)  
**32U** 2', U-bent, 32-watt T8, 6" leg spacing (2 lamps max.)

**2x4 LAMP OPTIONS**  
**28T5S** 4', 28-watt T5  
**32** 4', 32-watt T8  
**54T5H** 4', 54-watt T5HO (2 lamps max.)

**DOOR FRAME**  
**S** White flat steel  
**F** White flat aluminum  
**R** White regressed aluminum  
**SB** Black flat steel  
**FB** Black flat aluminum  
**RB** Black regressed aluminum

**SHIELDING**  
**A12125** Acrylic, pattern #12, .125" thick  
**A19156** Acrylic, pattern #19, .156" thick  
**PC1SS** Parabolic louver, silver styrene, nominal 1/2" x 1/2" x 1/2"  
**PC2SS** Parabolic louver, silver styrene, nominal 1-1/2" x 1-1/2" x 1"

**OPTIONS**  
For generic EM ballast options (must specify voltage), see [Technical Info](#).  
For flexible whip options, see [Technical Info](#).  
**F338** 6', 3/8" flex, 3-conductor, No. 18 AWG  
**AMW** Anti-microbial white finish  
**TP** Tamper-resistant (flat aluminum door only)  
**DG** Double gasket (flat aluminum door only)  
**TG** Triple gasket (flat aluminum door only; field installed)  
**EQCLIPS** Earthquake clips (4 per fixture)  
**CP** Chicago Plenum (CCEA)

**BALLAST TYPE**  
Additional ballast options available, see [Technical Info](#).  
**EB2** 2-lamp electronic ballast  
**EB3** 3-lamp electronic ballast  
**EB4** 4-lamp electronic ballast

**VOLTAGE**  
**120** 120V  
**277** 277V  
**UNV** 120-277V  
**347** 347V

## FEATURES

- ▶ Thermally protected for use in direct contact with insulation.
- ▶ Fully-enclosed spring-loaded cam latches allow years of hassle-free maintenance.
- ▶ T-slot steel hinge ensures positive retention when door is opened.
- ▶ 4-3/8" deep housing eliminates lens shadowing.
- ▶ Deep reinforcement ribs and rolled-edge channel provide added strength.
- ▶ Optional anti-microbial powder coating available to prevent the spread of dangerous micro-organisms and suppress the growth of mold and bacteria.
- ▶ Field convertible to NEMA Type "F".
- ▶ Fully gasketed door minimizes contaminants.
- ▶ All parts painted after fabrication to facilitate installation, increase efficiency, and inhibit corrosion.
- ▶ This fixture is proudly made in the USA.



### PHOTOMETRY

### SPECIFICATIONS

**Housing** – 22-gauge die-formed C.R.S.  
**Door Frame** – 20-gauge C.R.S. or .050" extruded aluminum, flat or regress, with mitered corners. T-slot steel hinge allows reversible hinging and latching. Fully enclosed spring-loaded cam latches.

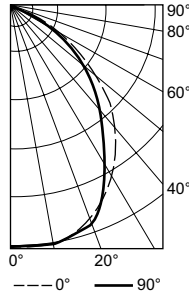
**Shielding** – Acrylic, pattern #12, .125" thick.  
**Finish** – 92% minimum average reflective white polyester powder coat bonded to phosphate-free, multi-stage pretreated metal. All parts painted after fabrication to facilitate installation, increase efficiency, and inhibit corrosion.

**Electrical** – Electronic ballast standard, instant start T8, program start T5, rated Class P.

**Mounting** – NEMA Type "G" standard. NEMA Type "F" available.

**Labels** –

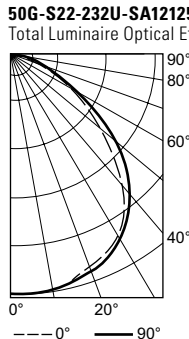
- UL/CUL listed as recessed fluorescent luminaire suitable for dry or damp locations.
- IC-rated for direct contact with insulation.
- City of Chicago Environmental Air approved when specified with CP option.



Vertical Angle	Horizontal Angle			Zonal Lumens
	0°	45°	90°	
0	1902	1902	1902	
5	1890	1888	1891	180.5
15	1849	1854	1856	526.1
25	1711	1703	1677	787.0
35	1436	1372	1288	859.2
45	1100	991	939	775.7
55	636	585	541	524.3
65	320	259	254	278.4
75	156	123	149	150.1
85	61	47	45	54.0
90	0	0	0	

Zone	Lumens	% Lamp	% Fixture
0 - 30	1494	25.3	36.1
0 - 40	2353	39.9	56.9
0 - 60	3653	61.9	88.3
0 - 90	4135	70.1	100.0
0 - 180	4135	70.1	100.0

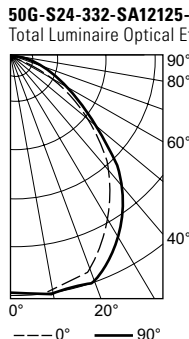
ROOM CAVITY RATIO	ZONAL CAVITY COEFFICIENTS									
	Ceiling	.80			.70			.50		
	Wall	.70	.50	.30	.70	.50	.30	.50	.30	.10
0	.83	.83	.83	.81	.81	.81	.78	.78	.75	
1	.78	.75	.73	.76	.74	.71	.71	.67	.65	
2	.72	.67	.64	.70	.66	.63	.64	.58	.57	
3	.67	.61	.56	.65	.60	.55	.58	.51	.50	
4	.62	.55	.50	.61	.54	.49	.52	.45	.44	
5	.57	.49	.44	.56	.49	.43	.47	.39	.39	
6	.53	.45	.39	.52	.44	.39	.43	.35	.34	
7	.49	.41	.35	.48	.40	.35	.39	.31	.31	
8	.45	.37	.31	.44	.36	.31	.35	.27	.27	
9	.42	.33	.28	.41	.33	.27	.32	.24	.24	
10	.39	.30	.25	.38	.30	.25	.29	.21	.21	



Vertical Angle	Horizontal Angle			Zonal Lumens
	0°	45°	90°	
0	1921	1921	1921	
5	1929	1913	1908	182.9
15	1858	1864	1880	529.4
25	1721	1750	1798	812.0
35	1458	1558	1607	971.3
45	1087	1117	1272	886.6
55	674	672	815	635.1
65	367	285	391	319.9
75	194	182	192	197.6
85	77	86	79	89.7
90	0	0	0	

Zone	Lumens	% Lamp	% Fixture
0 - 30	1524	26.7	33.0
0 - 40	2496	43.8	54.0
0 - 60	4017	70.5	86.9
0 - 90	4624	81.1	100.0
0 - 180	4624	81.1	100.0

ROOM CAVITY RATIO	ZONAL CAVITY COEFFICIENTS									
	Ceiling	.80			.70			.50		
	Wall	.70	.50	.30	.70	.50	.30	.50	.30	.10
0	.97	.97	.97	.94	.94	.94	.90	.90	.90	
1	.90	.86	.83	.88	.85	.82	.81	.79	.77	
2	.83	.77	.73	.81	.76	.71	.73	.69	.66	
3	.77	.69	.64	.75	.68	.63	.66	.61	.58	
4	.71	.62	.56	.69	.61	.56	.59	.54	.50	
5	.65	.56	.49	.64	.55	.49	.53	.48	.44	
6	.60	.51	.44	.59	.50	.44	.48	.43	.39	
7	.56	.46	.39	.55	.45	.39	.44	.38	.34	
8	.52	.41	.35	.50	.41	.34	.39	.34	.30	
9	.47	.37	.30	.46	.36	.30	.35	.30	.26	
10	.44	.37	.27	.43	.33	.27	.32	.27	.23	



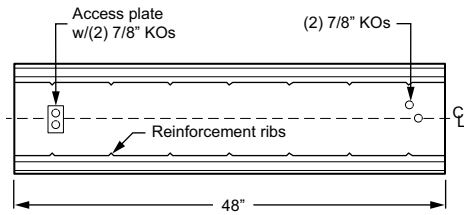
Vertical Angle	Horizontal Angle			Zonal Lumens
	0°	45°	90°	
0	2809	2809	2809	
5	2781	2778	2789	265.6
15	2740	2780	2820	788.4
25	2478	2589	2665	1194.5
35	2055	2198	2282	1372.1
45	1527	1643	1775	1275.1
55	935	956	1083	889.3
65	537	405	556	466.7
75	328	263	338	301.8
85	119	119	130	133.5
90	0	0	0	

Zone	Lumens	% Lamp	% Fixture
0 - 30	2248	26.3	33.6
0 - 40	3621	42.3	54.1
0 - 60	5785	67.7	86.5
0 - 90	6687	78.2	100.0
0 - 180	6687	78.2	100.0

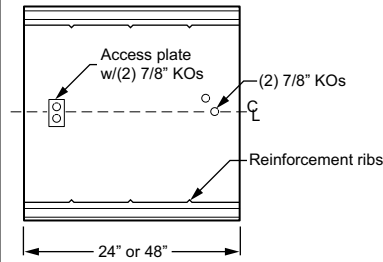
ROOM CAVITY RATIO	ZONAL CAVITY COEFFICIENTS									
	Ceiling	.80			.70			.50		
	Wall	.70	.50	.30	.70	.50	.30	.50	.30	.10
0	.93	.93	.93	.91	.91	.91	.87	.87	.87	
1	.86	.83	.80	.84	.81	.79	.78	.76	.74	
2	.80	.74	.70	.78	.73	.69	.70	.67	.64	
3	.74	.67	.61	.72	.66	.61	.64	.59	.56	
4	.68	.60	.54	.67	.59	.54	.57	.52	.49	
5	.63	.54	.48	.62	.53	.47	.52	.46	.42	
6	.58	.49	.42	.57	.48	.42	.47	.41	.37	
7	.54	.44	.38	.53	.44	.37	.42	.37	.33	
8	.50	.40	.33	.49	.39	.33	.38	.33	.29	
9	.46	.36	.30	.45	.35	.29	.34	.29	.25	
10	.43	.33	.27	.42	.32	.26	.31	.26	.22	

FIXTURE DETAILS

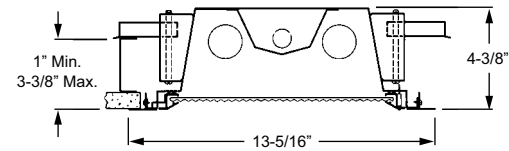
1x4 BACK VIEW



2x2 | 2x4 BACK VIEW

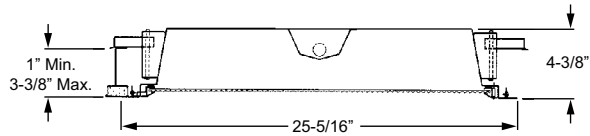


1x4 NEMA TYPE "F" INSTALLATION



Maximum Recommended Ceiling Opening: 12-3/8" x 48-3/8"  
For continuous row mounting, add 49-5/16" for each additional fixture to obtain ceiling opening. 1-5/16" between end plates.

2x2 | 2x4 NEMA TYPE "F" INSTALLATION

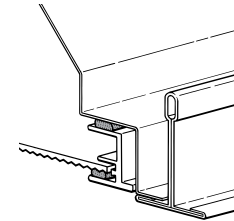


2' x 2' Max. Recommended Ceiling Opening: 24-3/8" x 24-3/8"

2' x 4' Max. Recommended Ceiling Opening: 24-3/8" x 48-3/8"

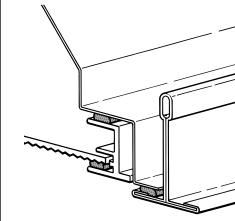
For 2'x4' continuous row mounting, add 49-5/16" for each additional fixture to obtain ceiling opening. 1-5/16" between end plates.

DOUBLE GASKETING (DG)



Gasketing is factory-installed continuously between door frame and luminaire housing; and between door frame and lens.

TRIPLE GASKETING (TG)



Gasketing is factory-installed continuously between door frame and luminaire housing; and between door frame and lens. Gasketing between bottom perimeter of unit (adjacent to T-bar or hardpan ceiling) is provided by factory and field installed.

