

6" ROUND HORIZONTAL LAMP DOWNLIGHT – IC-RATED

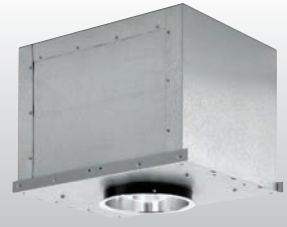
ICPH60

CFL

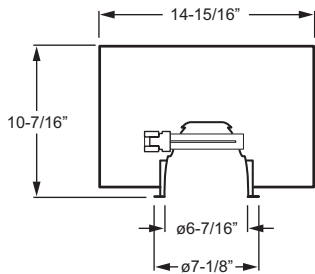
CATALOG #:	TYPE:
PROJECT:	NOTES:

EXAMPLE **ICPH60 - 2 26Q - CS - NB - OPTIONS - EB2 - UNV**

SERIES NUMBER OF LAMPS WATTAGE/TYPE REFLECTOR FINISH MOUNTING OPTIONS BALLAST TYPE VOLTAGE



CROSS SECTION



ORDERING INFORMATION

SERIES
ICPH60 6" Round Horizontal Lamp Downlight–IC Rated

LAMP OPTIONS	
# OF LAMPS	WATTAGE/TYPE
1	18Q, 26Q, 26T, 32T, or 42T ¹
2	18Q ¹ or 26Q ¹

¹ Not available with dimming or residential dimming ballasts.

REFLECTOR FINISH

CS	Clear semi-specular (standard)
SPC	Clear specular
CG	Champagne gold
GD	Gold
PW	Pewter
SG	Satin-glow
STR	Straw
WH	Painted white reflector, textured
WT	Wheat

MOUNTING

HB	(2) Hanger brackets with (2) bar hangers (rigid bar mounting)
NB	(2) Nailers bars (wood joist mounting)
TB	(2) T-Bar hangers (grid ceiling mounting)

OPTIONS

F	Fuse (must specify voltage)
MWT	Matte white trim
MB	Micro-baffle
LD	Luminous disk
LDO	Luminous disk open
LR	Luminous ring
ATH	Airtight housing
WW	Wall wash
CP	Chicago Plenum (CCEA)

BALLAST TYPE

EB1	1-lamp electronic ballast
EB2	2-lamp electronic ballast
EBR1	1-lamp residential electronic ballast (120V only, must specify)
EBR2	2-lamp residential electronic ballast (120V only, must specify)
EBD1*__	1-lamp electronic dimming ballast (must specify 120V or 277V only; available with 18-, 26-, or 32-watt only; must specify manufacturer, see Technical Info for dimming ballast options)
EBDR1*__	1-lamp residential electronic dimming ballast (must specify 120V only; available with 18-, 26-, or 32-watt only; must specify manufacturer, see Technical Info for dimming ballast options)

VOLTAGE (Must specify)

120	120V
277	277V
UNV	120-277V

FEATURES

- ▶ For use in direct contact with insulation.
- ▶ Integral pan throat field-adjusts to accommodate ceilings up to 2" thick.
- ▶ Self-flanged aluminum reflector prevents light leaks and is available in assorted colors.
- ▶ Optional residential electronic ballast (EBR) complies with Class B, FCC Part 18, non-commercial requirements.
- ▶ Optional wall wash (WW) optics are field-adjustable up to ±30°.
- ▶ Airtight option (ATH) complies with ASTM-E283 standards; meets Washington State Energy Code.
- ▶ Mounting choices (must specify) include hanger brackets with bar hangers, nailer bars, or T-bar hangers.
- ▶ This fixture is proudly made in the USA.

ICPH60

6" ROUND HORIZONTAL LAMP DOWNLIGHT – IC-RATED

CFL

PHOTOMETRY INFORMATION

Catalog #: ICPH60-226Q-EB-CS

SPECIFICATIONS

Housing – 22-gauge galvanized steel housing with 20-gauge pan and adjustable throat.

Inner Housing Finish – Black TGIC polyester powder coat bonded to phosphate-free, multi-stage pretreated metal.

Reflector – Low-iridescent aluminum. Clear semi-specular (CS) finish standard.

Electrical – Electronic ballast. Prewired at factory for easy field installation.

Mounting – Recessed.
Housing size: 14-15/16" x 12-1/4" x 10-7/16"
Ceiling cutout: ø6-1/2"

Labels –

- UL/CUL listed as suitable for through-branch circuit wiring and direct contact with insulation. Suitable for damp locations.
- City of Chicago Environmental Air approved when specified with CP option.

Warranty – 5-year limited warranty, see hew.com/warranty.

TEST REPORT INFORMATION

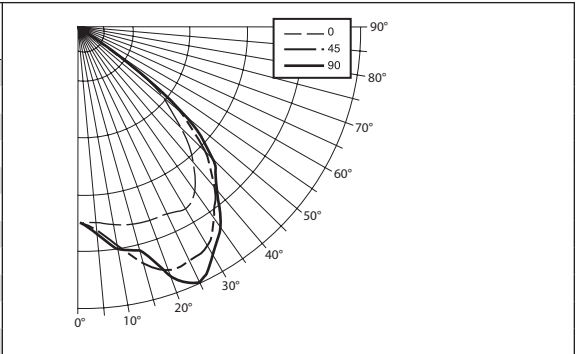
- Test Report #: 13291.0
- Date: 10/20/06
- Lamp Type: CFQ26W/G24q/35
- Lamp Quantity: 2
- Rated Lumens: 1800.

DESCRIPTION

- 2/26W Quad Tube Horizontal Compact Fluorescent Downlight
- 6" Aperture
- Low-Iridescent Semi-Specular Reflector with Open Bottom
- Sylvania Ballast #QTP2x2 6CF/UNVBS

CANDLEPOWER DISTRIBUTION

Vertical Angle	Horizontal Angle			Zonal Lumens
	0°	45°	90°	
0°	610.	610.	610.	
5°	614.	640.	651.	60.8
15°	637.	770.	725.	208.2
25°	642.	804.	878.	366.2
35°	621.	723.	755.	445.5
45°	440.	540.	576.	408.3
55°	103.	119.	150.	113.6
65°	8.	8.	8.	8.2
75°	3.	2.	2.	2.5
85°	1.	1.	0.	1.0
90°	0.	0.	0.	



LUMEN SUMMARY

Zone	Lumens	% Lamp	% Fixture
0 - 30	635.	17.6	39.3
0 - 40	1081.	30.0	66.9
0 - 60	1603.	44.5	99.3
0 - 90	1614.	44.8	100.0
Total Luminaire:			
0 - 180	1614.	44.8	100.0

IES Spacing Criteria: End = 1.5
Diagonal = 1.6
Across = 1.6

ZONAL CAVITY COEFFICIENTS

	Room Cavity Ratio									
	Ceiling	.80			.70			.50		
Wall	.70	.50	.30	.70	.50	.30	.50	.30	.10	
0	.53	.53	.53	.52	.52	.52	.50	.50	.50	
1	.50	.49	.48	.49	.48	.47	.46	.45	.44	
2	.48	.45	.43	.46	.44	.42	.43	.41	.40	
3	.45	.41	.39	.44	.40	.38	.39	.37	.36	
4	.42	.38	.35	.41	.37	.34	.36	.34	.32	
5	.39	.34	.31	.38	.34	.31	.33	.30	.28	
6	.36	.31	.28	.35	.31	.28	.30	.27	.25	
7	.33	.28	.25	.33	.28	.25	.27	.24	.22	
8	.31	.25	.22	.30	.25	.22	.25	.22	.20	
9	.28	.23	.19	.28	.22	.19	.22	.19	.17	
10	.26	.21	.17	.25	.20	.17	.20	.17	.15	

Effective Floor Cavity Reflectance = .20

QUANTITY ESTIMATOR

Room Size	±50 fc.	±75 fc.	±100 fc.
20' x 20' (400 sq. ft.)	14	22	29
30' x 30' (900 sq. ft.)	32	48	65
40' x 40' (1,600 sq. ft.)	57	86	115

Calculations based on standard reflectance of 80/50/20 and a light loss factor of 1.0 with a 10'-0" ceiling height.

LAMP BASE DATA	
WATTAGE	BASE
18Q	G24q-2
26Q	G24q-3
26T	GX24q-3
32T	GX24q-3
42T	GX24q-4

REFLECTOR FINISH MULTIPLIER		
CATALOG NUMBER	REFLECTOR FINISH	CONVERSION FACTOR
CS	Clear semi-specular	1.00
SPC	Clear specular	1.02
CG	Champagne Gold	0.96
GD	Gold	0.93
PW	Pewter	0.86
SG	Satin-glow	0.83
STR	Straw	0.97
WH	White, textured	0.90
WT	Wheat	0.88
MB	Micro-baffle	0.60

