

# COMPACT PROFILE MR16 EMERGENCY-WET

# EMER/MR16/CP/WET

CATALOG #: \_\_\_\_\_ TYPE: \_\_\_\_\_

PROJECT: \_\_\_\_\_ NOTES: \_\_\_\_\_

**EXAMPLE** → **EMER/MR16/CP/WET - GRAY - OPTIONS - D**

↓  
SERIES

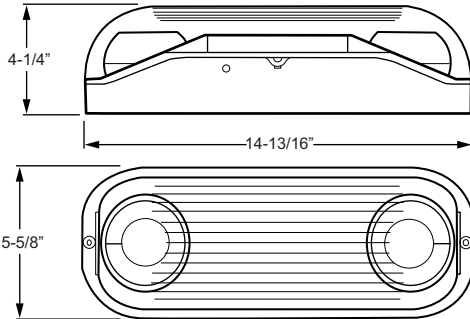
↓  
HOUSING  
COLOR

↓  
OPTIONS/  
ACCESSORIES

↓  
VOLTAGE



## CROSS SECTIONS



## ORDERING INFORMATION

**SERIES**  
**EMER/MR16/CP/WET** Compact Profile MR16 Emergency - Wet

**HOUSING COLOR** (Must specify)  
**BLK** Black  
**GRAY** Gray

**OPTIONS**  
**HTR** Internal heater  
**CW** Internal heater with battery blanket

**ACCESSORIES** (Shipped separately)  
See back for details.  
**WG** Wireguard

**VOLTAGE**  
**D** 120V or 277V  
**SV\_\_** Special voltage, consult factory for options

## FEATURES

- ▶ 6-volt, sealed lead acid, maintenance-free battery provides 90 minutes of emergency operation.
- ▶ Lamp/reflector combination provides ultra-bright performance.
- ▶ Fully automatic solid-state system recharges battery in 24 hours.
- ▶ Wet location listed.
- ▶ Automatic, low voltage disconnect (LVD) activates unit in event of partial power failure or brownout.
- ▶ Gray housing standard.
- ▶ Built-in test switch.
- ▶ Charge rate/power on LED indicator light.
- ▶ High-impact resistant.
- ▶ Two fully adjustable, ultra-bright 7.2-watt MR16 halogen lamp heads.
- ▶ Fully gasketed enclosure and clear polycarbonate lens cover offer protection against wet, non-hazardous dust, corrosive atmospheres, and water spray.



## SPECIFICATIONS

**Housing** – Injection-molded, engineering-grade, 5VA flame retardant, high-impact resistant, thermoplastic.

**Shielding** – High-impact resistant polycarbonate.

**Electrical** – Universal voltage, 120 or 277 VAC operation.

**Mounting** – Wall and conduit mount.

**Labels** – Listed to UL 924 standard as an emergency light suitable for wet locations (20°C - 40°C). Meets NFPA 101 Life Safety Code, NEC, OSHA, Local and State Codes.

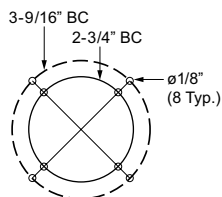
**Warranty** – 5-year limited warranty

## ELECTRICAL INFORMATION

Catalog Number	Input Watts (W)		Input Amps (A)	
	120V	277V	120V	277V
EMER/MR16/CP/WET	6.0	6.2	0.053	0.025

## FIXTURE DETAILS

### BOLT CIRCLE PATTERN



## ACCESSORIES

