

# LED EMERGENCY LIGHT

# EMER/LED

CATALOG #:	TYPE:
PROJECT:	NOTES:

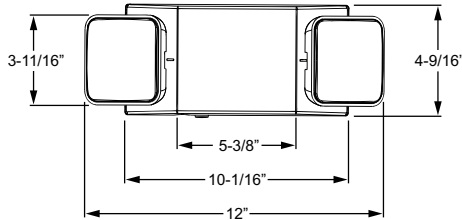
**LED**

**EXAMPLE** **EMER/LED - WHT - OPTIONS - D**

SERIES
HOUSING COLOR
OPTIONS/ ACCESSORIES
VOLTAGE



## CROSS SECTIONS



## ORDERING INFORMATION

<b>SERIES</b>	
<b>EMER/LED</b>	LED Emergency Light
<b>HOUSING COLOR</b>	
<b>BLK</b>	Black
<b>WHT</b>	Industry-standard white

<b>OPTIONS</b>	
<b>HL</b>	1.5-watt high lumen lamp heads
<b>SDT</b>	Self-diagnostic test
<b>RC</b>	Remote capable
<b>ACCESSORIES</b> (Shipped separately)	
See back for details.	
<b>PC3</b>	Polycarbonate shield
<b>WG</b>	Wireguard
<b>VOLTAGE</b>	
<b>D</b>	120V or 277V
<b>SV__</b>	Special voltage, consult factory for options (not available with SDT).

## FEATURES

- ▶ 3.6V long-life, maintenance-free, NiCd battery provides 90 minutes of emergency operation.
- ▶ Long lasting, efficient ultra-bright white LED lamp heads.
- ▶ High-performance chrome-plated metalized reflector and plastic lens for optimal light distribution.
- ▶ 1 watt per LED head.
- ▶ Adjustable LED lamp heads provide optimal center-to-center spacing. Optional high-lumen heads are available for increased center-to-center spacing.
- ▶ Fully automated solid-state, two-rate charger indicates battery charging to recharge a discharge battery in 24 hours.
- ▶ Built-in test switch.
- ▶ Charge rate/power on LED indicator light.

## LED

### SPECIFICATIONS

**Housing** – Injection-molded, engineering-grade, 5VA flame retardant, high-impact resistant, thermoplastic.

**Electrical** – Universal voltage, 120 or 277 VAC operation.

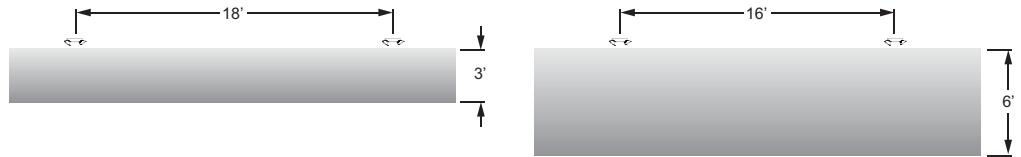
**Mounting** – Wall or ceiling mount. Top and side knockout for conduit applications.

**Labels** – Listed to UL 924 standard as an emergency light suitable for dry or damp locations (0°C - 50°C). Meets NFPA 101 Life Safety Code, NEC, OSHA, Local and State Codes.

**Warranty** – 5-year limited warranty

### FOOTPATH

**EMER/LED-WHT-HL** Meets Life Safety Code: Average illuminance of 1.0 FC with minimum illuminance of 0.1 FC. Reflectance values: 80/50/20  
 Fixture Mounting Height: 8' AFF



Average: 1.11 | Max: 2.3 | Min: 0.2 | Average min: 5.6 | Max/Min: 11.5

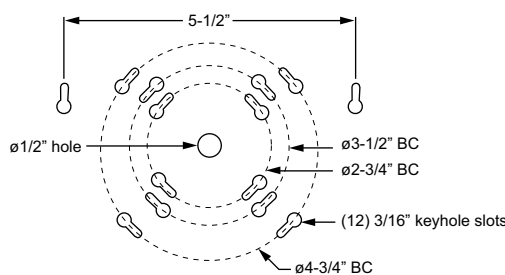
Average: 1.08 | Max: 2.4 | Min: 0.3 | Average min: 3.6 | Max/Min: 8.0

### ELECTRICAL INFORMATION

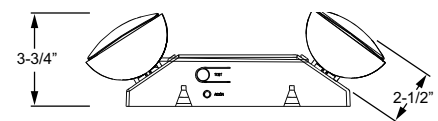
CATALOG NUMBER	INPUT WATTS (W)		INPUT AMPS (A)	
	120V	277V	120V	277V
EMER/LED	1.8	1.8	0.022	0.010
EMER/LED-SDT	1.6	1.6	0.020	0.010

### FIXTURE DETAILS

#### BOLT CIRCLE PATTERN



#### TOP VIEW



### ACCESSORIES

