

ASYMMETRIC MEDICAL BED LIGHT

MD2

LED

CATALOG #:

TYPE:

PROJECT:

NOTES:

EXAMPLE

MD2 G - 4 - L30/840 - A - OPTIONS - DIM - UNV

SERIES
CEILING TYPE

NOMINAL LENGTH

LUMEN PACKAGE

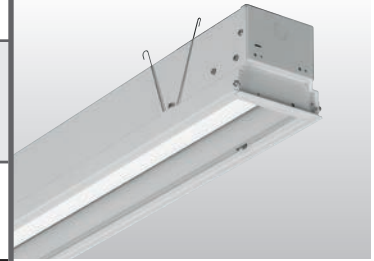
CRI & CCT

SHIELDING

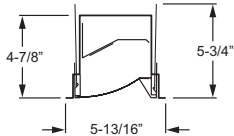
OPTIONS

DRIVER

VOLTAGE



CROSS SECTION



ORDERING INFORMATION

SERIES

MD2 Asymmetric Medical Bed Light – LED

CEILING TYPE

When using in NEMA Type “SS” or “NFG” applications, must specify EQCLIPS option. For flange installations use the Drywall Kit (DFK), see Accessories. Fixture must be installed prior to Drywall Kit (DFK).

G NEMA Type “G”, “SS”, and “NFG”

NOMINAL LENGTH

4 4'

LED PACKAGE

EXAMPLE: L30/840			AVERAGE SYSTEM WATTAGE
LUMEN PACKAGE	NOMINAL LUMENS (A or A/TP SHIELDING) ¹	MINIMUM CRI & CCT	
L30	3,000	830 = 80 CRI, 3000K	43
		835 = 80 CRI, 3500K	
		840 = 80 CRI, 4000K	

SHIELDING

A Curved frosted ribbed acrylic
A/CHA118 Curved frosted ribbed acrylic with clear, high temperature non-prismatic lens.
A/PC118 Curved frosted ribbed acrylic with clear polycarbonate lens.

OPTIONS

GLR Fuse, fast blow (specify voltage), requires one per driver
EM/10W 10-watt emergency driver (120-277V only)
EQCLIPS Earthquake clips (2 per fixture)
LVC1 1-circuit low-voltage controller, wired for Ambient (120V or 277V only, not dimming compatible)
LVC3DIM 1-circuit dimming low-voltage controller (120V or 277V only; DIM driver only)
SG Single gasket (fixture to grid)

ACCESSORIES (Must be ordered separately)

Fixture must be installed prior to Drywall Kit (DFK).
DFK-0648AMW Drywall kit, 6" x 48", anti-microbial white

DRIVER

Additional dimming drivers available, see [Technical Info](#).
DRV Driver prewired for non-dimming applications
DIM 10% dimming driver prewired for 0-10V low voltage applications

VOLTAGE

120 120V
277 277V
UNV 120-277V

FEATURES

- ▶ Designed for use in pairs to asymmetrically illuminate patient beds.
- ▶ Fixtures can be installed to allow maintenance access without working directly over patient beds.
- ▶ Multiple dimming protocols available.
- ▶ Provides varying levels of illumination through dimming driver.
- ▶ Optional low-voltage controller allows for bedside lighting control.
- ▶ Anti-microbial white finish standard.
- ▶ Quick-wire access plate in back of fixture housing for easy attachment of incoming power supply.
- ▶ This fixture is proudly made in the USA.

¹ Nominal lumens based on curved frosted ribbed acrylic (A or A/TP) shielding. Other shielding options may reduce lumen output.



MD2

ASYMMETRIC MEDICAL BED LIGHT

LED

Catalog #: MD2G-4-L30/840-A

SPECIFICATIONS

Housing – 22-gauge die-formed C.R.S.
Door Frame – Steel door frame with integral torsion springs to secure the frame within the fixture.

Shielding – Frosted, ribbed acrylic.

Finish – Textured 92% minimum average reflective white anti-microbial powder coating bonded to phosphate-free, multi-stage pretreated metal. All parts painted after fabrication to facilitate installation, increase efficiency, and inhibit corrosion.

Electrical – High quality mid-power LED board. Rated for 50,000 hours at 70% lumen maintenance (L70). 25°C maximum ambient operating temperature.

Mounting – NEMA Type “G” standard. For flange installations use the Drywall Kit (DFK), ordered separately. Fixture must be installed prior to Drywall Kit (DFK). Accommodates “NFG” and “SS” without modification (earthquake clips required).

Labels – cETLus conforms to UL STD 1598 and UL STD 8750. Certified to CAN/CSA STD C22.2 No. 250.0. Suitable for damp locations.

Warranty – 5-year limited warranty, see hew.com/warranty.

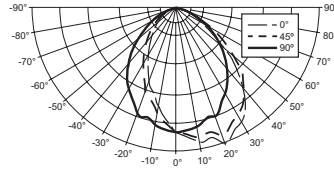
IMPORTANT:

Electrostatic sensitive unit. Observe precautions when handling.

PHOTOMETRY

TEST REPORT INFORMATION

- ▶ Test Report #: 16990.0
- ▶ Date: 12/13/12
- ▶ Lamp Type: LED
- ▶ **Rated Lumens: 3135**
- ▶ **Watts: 43.2**
- ▶ **Lumens Per Watt: 72.6**
- ▶ **CRI: 82.9**
- ▶ **CCT: 3948K**



CANDLEPOWER DISTRIBUTION

Vertical Angle	Horizontal Angle					Zonal Lumens
	0°	45°	90°	135°	180°	
0°	1482.	1482.	1482.	1482.	1482.	
5°	1556.	1518.	1447.	1386.	1348.	138.6
15°	1599.	1529.	1347.	1150.	1059.	380.1
25°	1600.	1512.	1232.	917.	790.	562.1
35°	1409.	1372.	1040.	686.	565.	641.4
45°	984.	1094.	790.	468.	374.	583.2
55°	514.	682.	524.	297.	231.	422.4
65°	240.	355.	319.	171.	139.	261.2
75°	102.	138.	149.	75.	67.	119.8
85°	22.	31.	36.	18.	15.	26.2
90°	0.	0.	0.	0.	0.	

LUMEN SUMMARY

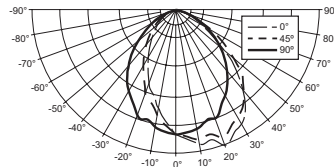
Zone	Lumens	% Fixture
0 - 30	1081.	34.5
0 - 40	1722.	54.9
0 - 60	2728.	87.0
0 - 90	3135.	100.0
Total Luminaire:		
0 - 180	3135.	100.0

PHOTOMETRY

Catalog #: MD2G-4-L30/840-A/CHA118

TEST REPORT INFORMATION

- ▶ Test Report #: 16991.0
- ▶ Date: 12/13/12
- ▶ Lamp Type: LED
- ▶ **Rated Lumens: 2942**
- ▶ **Watts: 42.8**
- ▶ **Lumens Per Watt: 68.7**
- ▶ **CRI: 83.0**
- ▶ **CCT: 3953K**



CANDLEPOWER DISTRIBUTION

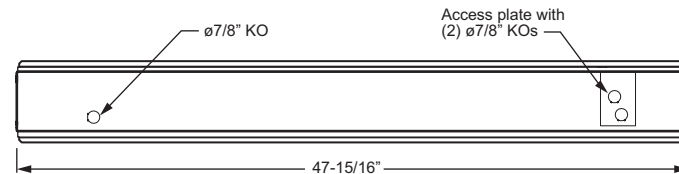
Vertical Angle	Horizontal Angle					Zonal Lumens
	0°	45°	90°	135°	180°	
0°	1405.	1405.	1405.	1405.	1405.	
5°	1475.	1440.	1378.	1320.	1290.	131.7
15°	1513.	1449.	1282.	1103.	1019.	361.9
25°	1518.	1433.	1177.	894.	779.	538.2
35°	1340.	1300.	995.	676.	565.	617.0
45°	941.	1034.	758.	468.	385.	564.3
55°	479.	631.	494.	298.	239.	399.6
65°	203.	304.	285.	161.	134.	230.6
75°	67.	96.	111.	59.	52.	86.1
85°	11.	14.	15.	10.	10.	12.3
90°	0.	0.	0.	0.	0.	

LUMEN SUMMARY

Zone	Lumens	% Fixture
0 - 30	1032.	35.1
0 - 40	1649.	56.0
0 - 60	2613.	88.8
0 - 90	2942.	100.0
Total Luminaire:		
0 - 180	2942.	100.0

FIXTURE DETAILS

BACK VIEW



FOOTCANDLE ESTIMATOR & DISTRIBUTION

ACRYLIC	A/CHA118
81	76
85	80
81	77
90	85
94	89
91	86
95	89
91	86
95	86
86	82
90	85
86	82
74	70
77	73
74	70
58	55
60	56
58	55
43	41
45	42
43	41
32	30
33	31
31	30

Footcandle calculations based on standard reflectance of 90/60/30 and a light loss factor of 1.0. Fixtures spaced 3' 6" O.C. over 3' wide bed at an 8' ceiling height. Values are for bed surface.