

# 6" WIDE LINEAR LIGHT – LENS OR LOUVER

# LL6

## LED

CATALOG #:

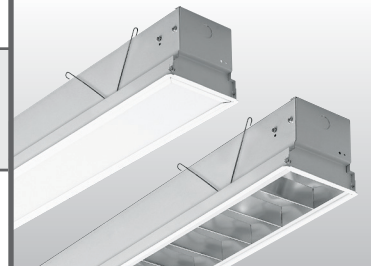
TYPE:

PROJECT:

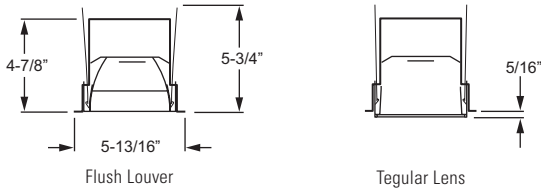
NOTES:

**EXAMPLE** **LL6 G - 4 - L34/840 - SWF/AF125 - OPTIONS - DIM - UNV**

SERIES CEILING TYPE NOM. L. LUMEN PACKAGE CRI & CCT SHIELDING OPTIONS DRIVER VOLTAGE



## CROSS SECTIONS



## ORDERING INFORMATION

**SERIES**  
**LL6** 6" Wide Linear Light LED - Lens or Louver

**CEILING TYPE**  
 When using in NEMA Type "SS" or "NFG" applications, must specify EQCLIPS option. For flange installations use the Drywall Kit (DFK), see Accessories.  
**G** NEMA Type "G", "SS", and "NFG"

**NOMINAL LENGTH**

2	2' (lens only)	4	4'
3	3' (lens only)	5	5'

**LED PACKAGE**

LENGTH	EXAMPLE: L34/840			MINIMUM CRI & CCT	AVERAGE SYSTEM WATTAGE
	LUMEN PACKAGE	NOMINAL LUMENS LENS	LOUVER		
2'	L16 <sup>1</sup>	1,600	1,300	830 = 80 CRI, 3000K	21
3'	L26	2,600	2,200	835 = 80 CRI, 3500K	32
4'	L34	3,400	2,900	840 = 80 CRI, 4000K	45
5'	L42	4,200	3,600	850 = 80 CRI, 5000K	52

Nominal lumens based on 3500K CCT, actual lumens may vary. Maximum nominal lumens shown.

## SHIELDING

LENS	EXAMPLE: SWF/AF125			
	TYPE/COLOR	LEVEL	/	LENS
	SW = Steel, white frame	F = Flush T = Tegular	/	AF125 = Frosted acrylic, .125" thick

LOUVER	LENGTH	EXAMPLE: F116S/MWA				
		LEVEL	CELLS	FINISH	/	OVERLAY
4'	4'	F = Flush T = Tegular	116 = 1x16, 16-cell	S = Semi-specular aluminum (standard)	/	MWA = Matte white acrylic overlay
		F = Flush T = Tegular	120 = 1x20, 20-cell	M = Specular aluminum W = White aluminum		

**OPTIONS**  
**EM/10W EQCLIPS (L\_\_)** 10-watt emergency driver (120V-277V only) Earthquake clips (2 per fixture) Additional lower lumen packages available. Specify in increments of 100 nominal lumens. Option must be specified with next higher lumen package.  
 Example: 4,000 nominal lumens = **LL6G-4-L34/850-(L40)**.

**ACCESSORIES** (Must be ordered separately)  
 Fixture must be installed prior to Drywall Kit (DFK).  
**DFK-0624W** Drywall kit, 6" x 24"  
**DFK-0636W** Drywall kit, 6" x 36"  
**DFK-0648W** Drywall kit, 6" x 48"  
**DFK-0660W** Drywall kit, 6" x 60"

**DRIVER**  
 Additional dimming drivers available, see [Technical Info](#).  
**DRV** Driver prewired for non-dimming applications  
**DIM** Driver prewired for 0-10V low voltage dimming applications

**VOLTAGE**  
**120** 120V  
**277** 277V  
**UNV** 120-277V  
**347** 347V (DRV and DIM only. Not available with EM drivers.)

## FEATURES

- ▶ Designed to deliver subtle area lighting with minimal glare for offices, classrooms, and general applications.
- ▶ Flush (F) frame level option with frosted acrylic lens (AF125) creates the appearance of an unobtrusive and simple line of light – a perfect complement to unique design applications.
- ▶ Fixture is Armstrong TechZone™ and USG Logix™ ceiling systems compatible.
- ▶ Multiple dimming protocols available.
- ▶ Minimum 80 CRI, 3000K, 3500K, 4000K, or 5000K CCT.
- ▶ Quick-wire access plate in back of fixture housing for easy attachment of incoming power supply.
- ▶ This fixture is proudly made in the USA.

<sup>1</sup> DRV and DIM only. Not available with EM drivers.



### LED

### SPECIFICATIONS

**Housing** – 22-gauge die-formed C.R.S.  
**Shielding** –  
 Door Frame & Lens:  
 Steel door frame with integral torsion springs to secure the frame within the fixture, .125" thick frosted acrylic.  
 Parabolic Louver:  
 Semi-specular, low-iridescent anodized aluminum with matte white overlay standard, specular and white aluminum available.  
**Finish** – 92% minimum average reflective white powder polyester coat bonded to phosphate-free, multi-stage pretreated metal. All parts painted after fabrication to facilitate installation, increase efficiency, and inhibit corrosion.  
**Electrical** – High quality mid-power LED boards. Rated for 50,000 hours at 70% lumen maintenance (L70).  
**Mounting** – NEMA Type "G" standard. For flange installations use the Drywall Kit (DFK), ordered separately. Fixture must be installed prior to Drywall Kit (DFK). Accommodates "NFG" and "SS" without modification (earthquake clips required).  
**Labels** – cETLus conforms to UL STD 1598 and UL STD 8750. Certified to CAN/CSA STD C22.2 No. 250.0. Suitable for damp locations.  
**Warranty** – 5-year limited warranty, see hew.com/warranty.

### IMPORTANT:

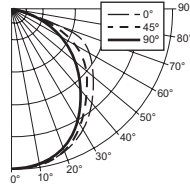
Electrostatic sensitive unit. Observe precautions when handling.

### PHOTOMETRY – LENS

Catalog #: **LL6G-4-L34/840-SWF/AF125**

#### TEST REPORT INFORMATION

- ▶ Test Report #: 17249.0
- ▶ Date: 04/15/13
- ▶ Lamp Type: LED
- ▶ **Rated Lumens: 3537**
- ▶ **Watts: 44.1**
- ▶ **Lumens Per Watt: 80.1**
- ▶ **CRI: 83.0**
- ▶ **CCT: 4012K**



#### CANDLEPOWER DISTRIBUTION

Vertical Angle	Horizontal Angle			Zonal Lumens
	0°	45°	90°	
0°	1718.	1718.	1718.	
5°	1708.	1704.	1702.	162.7
15°	1591.	1567.	1547.	444.7
25°	1379.	1329.	1277.	614.7
35°	1140.	1061.	986.	667.0
45°	879.	791.	717.	614.8
55°	600.	530.	475.	479.1
65°	373.	329.	295.	329.6
75°	185.	161.	146.	173.2
85°	52.	45.	42.	50.8
90°	0.	0.	0.	

#### LUMEN SUMMARY

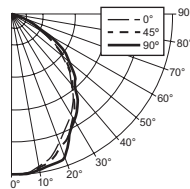
Zone	Lumens	% Fixture
0° - 30°	1222.	34.6
0° - 40°	1889.	53.4
0° - 60°	2983.	84.3
0° - 90°	3537.	100.0
<b>TOTAL LUMINAIRE:</b>		
0 - 180	3537.	100.0
IES Spacing Criteria: End = 1.1 Diagonal = 1.1 Across = 1.0		

### PHOTOMETRY – LOUVER

Catalog #: **LL6G-4-L34/840-F116S/MWA**

#### TEST REPORT INFORMATION

- ▶ Test Report #: 17250.0
- ▶ Date: 04/15/13
- ▶ Lamp Type: LED
- ▶ **Rated Lumens: 2893**
- ▶ **Watts: 44.4**
- ▶ **Lumens Per Watt: 65.1**
- ▶ **CRI: 82.6**
- ▶ **CCT: 3932K**



#### CANDLEPOWER DISTRIBUTION

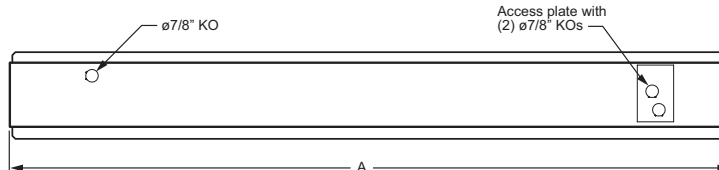
Vertical Angle	Horizontal Angle			Zonal Lumens
	0°	45°	90°	
0°	1472.	1472.	1472.	
5°	1464.	1465.	1468.	139.9
15°	1365.	1389.	1422.	394.4
25°	1169.	1225.	1234.	559.8
35°	976.	990.	1024.	624.8
45°	753.	753.	798.	594.3
55°	491.	476.	536.	439.4
65°	58.	138.	177.	123.4
75°	10.	13.	17.	14.0
85°	2.	2.	5.	3.1
90°	0.	0.	0.	

#### LUMEN SUMMARY

Zone	Lumens	% Fixture
0° - 30°	1094.	37.8
0° - 40°	1719.	59.4
0° - 60°	2753.	95.1
0° - 90°	2893.	100.0
<b>TOTAL LUMINAIRE:</b>		
0 - 180	2893.	100.0
IES Spacing Criteria: End = 1.1 Diagonal = 1.1 Across = 1.2		

### FIXTURE DETAILS

#### BACK VIEW



Nominal Length	Actual Length (A)
2' Unit	23-15/16"
3' Unit	35-15/16"
4' Unit	47-15/16"
5' Unit	59-15/16"