

ARCHITECTURAL WALL MOUNT UP/DOWN

WMAUD

LED

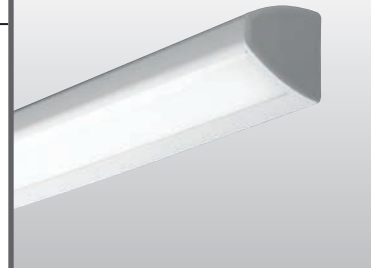
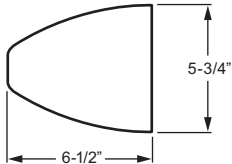
CATALOG #: _____ TYPE: _____

PROJECT: _____ NOTES: _____

EXAMPLE → **WMAUD - 4 - L32/840U / L32/840D - AF - OPTIONS - DIMU/DIMD - UNV**

SERIES NOMINAL LENGTH LUMEN PACKAGE CRI & CCT LUMEN PACKAGE CRI & CCT SHIELDING OPTIONS UPLIGHT DRIVER DOWNLIGHT DRIVER VOLTAGE

CROSS SECTION



ORDERING INFORMATION

SERIES
WMAUD Architectural Wall Mount Up/Down

NOMINAL LENGTH

2	2'
3	3'
4	4'

LED PACKAGE

EXAMPLE: L32/840					
	LUMEN PACKAGE	NOMINAL LUMENS	MINIMUM CRI & CCT	UP OR DOWN	AVERAGE SYSTEM WATTAGE
2'	L15	1,500	827 = 82 CRI, 2700K 830 = 82 CRI, 3000K	U OR D	40
3'	L23	2,300	835 = 82 CRI, 3500K 840 = 82 CRI, 4000K		57
4'	L32	3,200	850 = 82 CRI, 5000K		81

Nominal lumen output based on 3500 CCT. Actual lumens may vary +/-5%, see specific photometric tests.

SHIELDING
AF Frosted acrylic, .125" thick

OPTIONS
 Low-voltage controllers available. See back for details.
 For color options, visit the WMAUD online at hew.com.

PSBR/120 Single-circuit bottom-mounted pull switch on right (operates downlight, 120V only)

PSBL/120 Single-circuit bottom-mounted pull switch on left (operates downlight, 120V only)

PS2BR/120 Two-circuit, 4-position bottom-mounted pull switch on right (120V only)

PS2BL/120 Two-circuit, 4-position bottom-mounted pull switch on left (120V only)

GCOL Grounded convenience outlet on left (120V only)

GCOR Grounded convenience outlet on right (120V only)

TP Tamper-resistant (holt head) screws. This option requires a tamper-resistant tool (must be ordered separately). Please specify quantity required per project.

EM/10W 10-watt emergency driver (120V-277V only)

AMW Anti-microbial white finish

OCC_ Factory-installed occupancy sensor, 120V or 277V only, must specify voltage. LVC and OCC options cannot be used simultaneously on 2' and 3' units. Occupancy sensor operates the down light: OCCWS FS-505-PP-___

DRIVER
 Additional dimming drivers available, see [Technical Info](#).
 Specify drivers: **U** for Uplight and **D** for Downlight.
 EXAMPLE: **DIMU/DIMD**

DRV_ Driver prewired for non-dimming applications

DIM_ 10% dimming driver prewired for 0-10V low voltage applications

VOLTAGE

120	120V
277	277V
UNV	120-277V
347	347V (not available with EM drivers)

FEATURES

- ▶ Numerous lighting combinations can be achieved through a variety of available lumen levels.
- ▶ Contoured architectural housing with die-cast aluminum end caps.
- ▶ Multiple dimming protocols available.
- ▶ Tool-less access to LEDs by removing front housing from fixture channel.
- ▶ Pull switch and grounded convenience outlet options available (120V only).
- ▶ Various housing color options available, consult factory.
- ▶ Optional anti-microbial white finish available for use in healthcare applications.
- ▶ Keyhole mounting for easy installation.
- ▶ Optional tamper-resistant screws available.
- ▶ This fixture is proudly made in the USA.



LED

LOW-VOLTAGE CONTROLLER (120V or 277V only)

EXAMPLE: LVC2U/D

Controller	Load 1	Load 2
LVC1 = 1-circuit	U = Up D = Down	
LVC2 = 2-circuit	U/ = Up	D = Down
LVC3 = dimming control	DIMU/ = Uplight, 0-10 dimming ¹ DIMD/ = Downlight, 0-10 dimming ¹	U = Up D = Down

¹ Smooth dimming of the load utilizing a single, dry contact, momentary, normally open switch which will dim from 25% up to 100% while holding down the switch.

SPECIFICATIONS

Housing – 20-gauge C.R.S. fixture channel. Front housing constructed of marine grade extruded aluminum with die-cast aluminum end caps.

Reflective Surfaces – 92% minimum average reflective white polyester powder coat on interior steel components.

Shielding – Frosted acrylic, .125" thick.

Finish – Textured matte white polyester TGIC powder coat bonded to phosphate-free, multi-stage pretreated metal. All parts painted after fabrication to facilitate installation, increase efficiency, and inhibit corrosion.

Electrical – High quality mid-power LED board. L70 at 50,000 hours. 25°C maximum ambient operating temperature.

Mounting – Wall.

Labels – cETLus conforms to UL STD 1598 and UL STD 8750. Certified to CAN/CSA STD C22.2 No. 250.0. Suitable for damp locations.

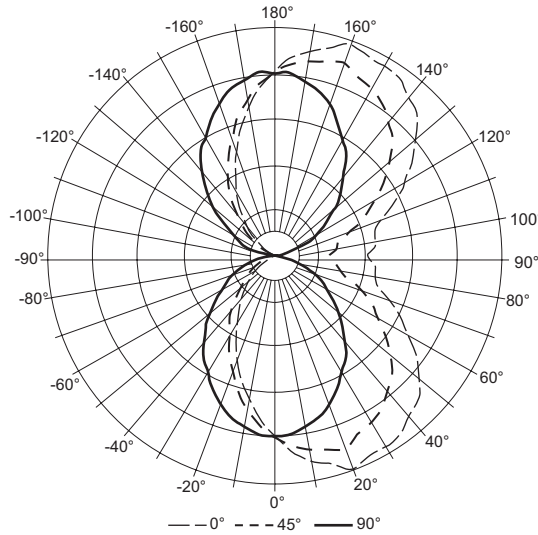
Warranty – 5-year limited warranty, see hew.com/warranty.

IMPORTANT:

Electrostatic sensitive unit. Observe precautions when handling.

PHOTOMETRY

WMAUD-4-L32/840U/L32/840D-AF Report #: 17320.0; 05/06/13
Total Luminaire Output: 6488 lumens 79.5 Watts; Efficacy: 81.6 lm/W; 84.2 CRI; 4025K CCT

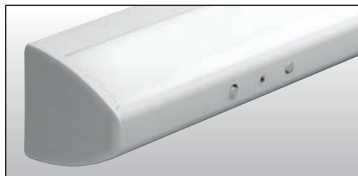


Vertical Angle	Horizontal Angle					Zonal Lumens
	0°	45°	90°	135°	180°	
0	1158.	1158.	1158.	1158.	1158.	
5	1264.	1224.	1151.	1097.	1062.	110.8
15	1374.	1280.	1075.	906.	832.	309.7
25	1417.	1264.	945.	692.	594.	453.0
35	1400.	1201.	800.	506.	402.	536.3
45	1304.	1069.	615.	318.	226.	536.0
55	1097.	863.	440.	175.	100.	466.9
65	884.	670.	288.	67.	18.	366.3
75	676.	449.	144.	5.	9.	252.0
85	651.	391.	33.	17.	33.	212.6
90	594.	358.	0.	31.	46.	
95	647.	394.	35.	24.	39.	215.0
105	672.	455.	146.	5.	9.	250.7
115	878.	674.	289.	64.	16.	365.4
125	1088.	869.	448.	178.	100.	467.3
135	1287.	1069.	620.	318.	226.	535.1
145	1388.	1201.	814.	509.	405.	536.6
155	1406.	1262.	957.	695.	597.	452.8
165	1370.	1281.	1091.	908.	836.	310.3
175	1262.	1226.	1170.	1103.	1069.	111.3
180	1161.	1161.	1161.	1161.	1161.	

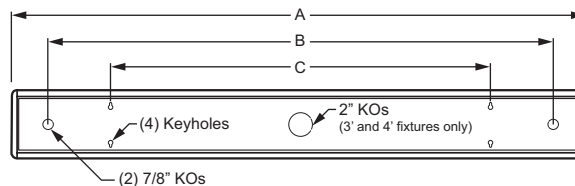
Zone	Lumens	% Fixture
0 - 30	873.	13.5
0 - 40	1410.	21.7
0 - 60	2413.	37.2
0 - 90	3244.	50.0
90 - 120	831.	12.8
90 - 150	2370.	36.5
90 - 180	3244.	50.0
0 - 180	6488.	100.0

FIXTURE DETAILS

OCCUPANCY SENSOR



BACK VIEW



NOMINAL LENGTH	DIMENSIONS		
	A	B	C
2' Unit	25-1/8" O.C.	20-1/2" O.C.	16" O.C.
3' Unit	37-1/8" O.C.	32-1/2" O.C.	32" O.C.
4' Unit	49-1/8" O.C.	42-1/2" O.C.	32" O.C.