

# DESIGNERLINE DIRECT/INDIRECT BED LIGHT

# DB

## T5 | T8

CATALOG #:

TYPE:

PROJECT:

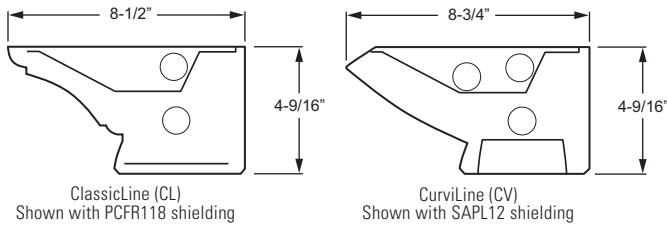
NOTES:

**EXAMPLE** DB CL - 4 - 132U/132D - S/F - PCFR118 - OPTIONS - EB1U/EB1D - UNV

SERIES STYLE NOMINAL LENGTH #LAMPS/TYPE UPLIGHT/DOWNLIGHT FIXT. END TYPE CAP SHIELDING OPTIONS BALLAST TYPE UPLIGHT/DOWNLIGHT VOLTAGE



## CROSS SECTIONS



## ORDERING INFORMATION

**SERIES**  
**DB** DesignerLine Direct/Indirect Bed light

**STYLE**  
**CL** ClassicLine  
**CV** CurviLine

NOMINAL LENGTH			
2	2'	6	6'
3	3'	8	8'
4	4'		

**TOTAL LAMPS**  
**UPLIGHT**  
 1, 2, or 4 1- or 2-lamp cross-section  
**DOWNLIGHT**  
 1 or 2 1-lamp cross-section

**LAMP WATTAGE/TYPE**  
 Specify lamp wattage/type: **U** for uplight and **D** for downlight.  
**Example:** 132U/132D  
**2' LAMP OPTIONS**  
**14T5S** 2', 14-watt T5 (1- or 2-lamp ballast[s] only)  
**17** 2', 17-watt T8  
**24T5H** 2', 24-watt T5HO  
**3' or 6' LAMP OPTIONS**  
**21T5S** 3', 21-watt T5 (1- or 2-lamp ballast[s] only)  
**25** 3', 25-watt T8  
**39T5H** 3', 39-watt T5HO  
**4' or 8' LAMP OPTIONS**  
**28T5S** 4', 28-watt T5 (1- or 2-lamp ballast[s] only)  
**32** 4', 32-watt T8  
**54T5H** 4', 54-watt T5HO

**FIXTURE TYPE**  
**S** Stand-alone unit, two end caps installed

**END CAP**  
**F** Flat ends  
**M** Mitered ends (increases overall length, see back for details)

**SHIELDING** (Downlight only)  
**PCFR118** Frosted polycarbonate, .118" thick  
**PC12125** Polycarbonate, pattern #12, .125" thick  
**SAPL12** Semi-specular aluminum parabolic louver, 1-1/4" deep

**OPTIONS**  
 For color options, visit the DB at [hew.com](http://hew.com).  
 For generic EM ballast options (must specify voltage), see [Technical Info](#). Ballast size restrictions apply.

**GLR** Fuse, fast blow (specify voltage, one per ballast)  
**CDC** Clear flat dustcover (uplight only)  
**PDC** Clear prismatic lens dustcover (uplight only)  
**LVC1** 1-circuit low-voltage controller, specify U (Up), D (Down), or UD (Up and Down; controlled together), 120V or 277V only, not dimming compatible  
**LVC2UD** 2-circuit low-voltage controller, controls up and down separately, 120V or 277V only, not dimming compatible  
**PSR/120** Single-circuit pull switch on right (operates downlight, 120V only)  
**PS2R/120** Two-circuit, 4-position pull switch on right (operates up and downlight, 120V only)  
**PSL/120** Single-circuit pull switch on left (operates downlight, 120V only)  
**PS2L/120** Two-circuit, 4-position pull switch on left (operates up and downlight, 120V only)

**BALLAST TYPE**  
 For dimming ballast options, see [Technical Info](#). Ballast size restrictions apply.

EXAMPLE: EB1U/EB1D		
	CATALOG #	DESCRIPTION
UPLIGHT	EB1U	1-lamp electronic ballast
	EB2U	2-lamp electronic ballasts
	EB2/2U	(2) 2-lamp electronic ballasts
	EB4U	4-lamp electronic ballast (not available with T5S)
DOWNLIGHT	EB1D	1-lamp electronic ballast
	EB2D	2-lamp electronic ballasts

VOLTAGE	
120	120V
277	277V
UNV	120-277V
347	347V

## FEATURES

- ▶ Designed with the appearance of finely crafted carpentry.
- ▶ Precision reflectors and diffusing elements produce comfortable ambient light, along with a highly functional reading light.
- ▶ The direct and indirect components are fully isolated and separately switchable using a pull chain, low-voltage bedside or wall switch.
- ▶ Heavy-duty extruded aluminum housing ensures superior durability while providing crisp design detail.
- ▶ Sturdy mounting brackets make it easy to securely install and level fixtures.
- ▶ Optional clear or prismatic dustcover allows easy cleaning and reduces accumulation of dust and debris on uplight.
- ▶ Anti-microbial white finish standard.
- ▶ This fixture is proudly made in the USA.



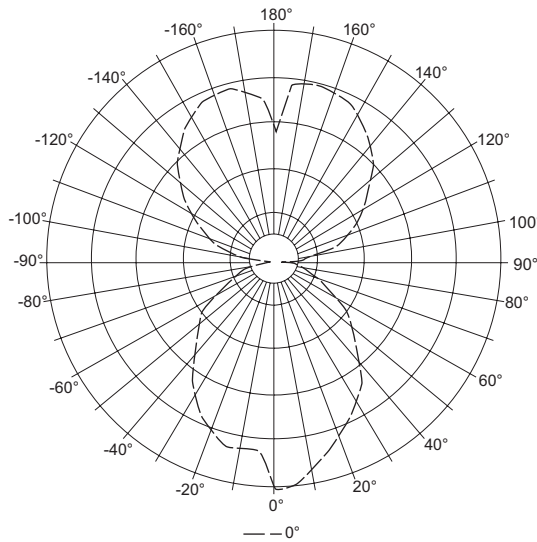
T5 | T8

## SPECIFICATIONS

- Housing** – Extruded aluminum.
- Weight** – 5.5 lbs. per foot (approximately).
- End Caps** – Welded aluminum, seam-filled and ground at ends.
- Reflective Surfaces** – 92% minimum average reflective white polyester powder coat on interior steel components.
- Shielding** – Downlight only. Frosted polycarbonate, .118" thick.
- Finish** – Textured anti-microbial matte white polyester TGIC powder coat bonded to phosphate-free, multi-stage pretreated metal. All parts painted after fabrication to facilitate installation, increase efficiency, and inhibit corrosion.
- Electrical** – Electronic ballast standard, instant start T8, program start T5, rated Class P.
- Mounting** – Wall.
- Labels** – UL/CUL listed as fluorescent luminaire suitable for dry or damp locations.

## PHOTOMETRY

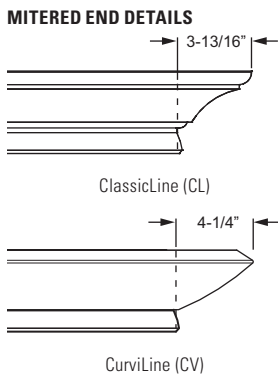
DBCL-4-132U/132D-PC12125 Report #: DBCL-4-132U-132D-PC12125; 08/19/13; Lamp Type: 1F32T8/1F32T8 Lamp Quantity: 2; Total Luminaire Optical Efficiency: 71.8%; Effective Floor Cavity Reflectance = .20



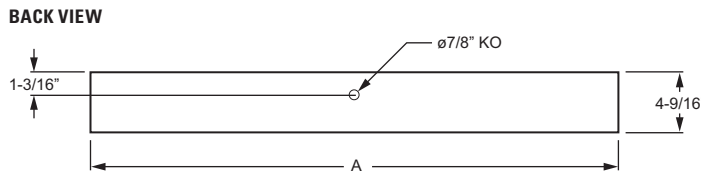
Vertical Angle	Horizontal Angle					Zonal Lumens
	0°	90°	180°	270°	360°	
0	795	795	795	795	795	
5	781	698	668	754	781	18.2
15	688	690	675	678	688	133.9
25	604	586	604	566	604	238.4
35	519	514	511	473	519	299.6
45	387	402	393	433	387	319.6
55	292	258	317	338	292	295.7
65	178	163	192	219	178	232.1
75	112	104	115	166	112	160.8
85	56	57	40	93	56	124.4
90	21	23	20	45	21	
95	102	180	108	45	102	37.2
105	215	433	214	86	215	186.4
115	305	558	301	163	305	292.7
125	383	628	399	277	383	357.3
135	484	732	487	346	484	391.7
145	550	750	564	441	550	383.1
155	611	727	613	510	611	326.3
165	636	715	628	604	636	236.2
175	626	656	572	608	626	132.7
180	451	451	451	451	451	

		ZONAL CAVITY COEFFICIENTS									
		Ceiling		.80			.70			.50	
ROOM CAVITY RATIO	Wall	.70	.50	.30	.70	.50	.30	.50	.30	.10	
	0	.76	.76	.76	.69	.69	.69	.57	.57	.57	
	1	.68	.65	.62	.62	.59	.57	.49	.47	.45	
	2	.62	.56	.52	.56	.51	.47	.42	.39	.37	
	3	.56	.49	.44	.51	.45	.40	.37	.33	.30	
	4	.51	.43	.37	.47	.40	.34	.33	.29	.26	
	5	.47	.38	.32	.43	.35	.30	.29	.25	.22	
	6	.43	.34	.28	.39	.31	.26	.26	.22	.19	
	7	.40	.31	.25	.36	.28	.23	.23	.19	.16	
	8	.37	.28	.22	.33	.25	.20	.21	.17	.14	
	9	.34	.25	.20	.31	.23	.18	.19	.15	.13	
10	.32	.23	.18	.29	.21	.16	.18	.14	.11		

Zone	Lumens	% Lamp	% Fixture
0 - 30	390	6.7	9.4
0 - 40	690	11.9	16.6
0 - 60	1305	22.5	31.3
0 - 90	1823	31.4	43.7
90 - 120	516	8.9	12.4
90 - 130	874	15.1	21.0
90 - 150	1648	28.4	39.6
90 - 180	2344	40.4	56.3
0 - 180	4166	71.8	100.0



## FIXTURE DETAILS



NOMINAL LENGTH	ACTUAL LENGTH (A)	
	T5	T8
2'	22-13/16"	24-1/4"
3'	34-9/16"	36-1/4"
4'	46-3/8"	48-1/4"
6'	68-3/4"	72-1/8"
8'	92-5/16"	96-1/8"

Note: Mitered ends add to overall length, see details on left.

