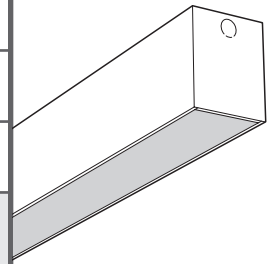


4" WIDE LINEAR RECESSED

LR4



SUBMITTAL:

JOB:

TYPE:

VOLTAGE:

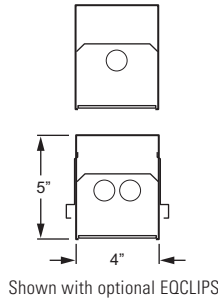
EXAMPLE

LR4 G - 4 - 1 32 - DMA - OPTIONS - EB1 - UNV

SERIES CEILING TYPE NOMINAL LENGTH TOTAL WATTAGE/LAMPS TYPE SHIELDING OPTIONS/ACCESSORIES BALLAST TYPE VOLTAGE

FEATURES

- ▶ Sleek design incorporates clean lines, slim styling, and diffused matte acrylic lens.
- ▶ Attractive source of direct lighting for use in offices, hallways, conference rooms or common areas.
- ▶ Lamps are shielded from view by diffused matte acrylic lens.
- ▶ Lift and shift lens allows easy access to lamp and ballast.
- ▶ For use as stand-alone fixture or in continuous rows.
- ▶ This fixture is proudly made in the USA.



SPECIFICATIONS

Housing – 22-gauge die-formed C.R.S.
Lens – Diffused matte acrylic, .080" thick.
Finish – 92% minimum average reflective white polyester powder coat bonded to phosphate-free, multi-stage pretreated metal. All parts painted after fabrication to facilitate installation, increase efficiency, and inhibit corrosion.
Electrical – Electronic ballast standard, instant start T8, program start T5, rated Class P.
Mounting – NEMA Type "G" standard, set for grid spacing of 4-3/8". For flange installations use the Drywall Kit (DFK), see [Technical Info](#).
Labels – UL/CUL listed as fluorescent luminaire suitable for dry or damp locations. City of Chicago Environmental Air approved when specified with CP option.

ORDERING INFORMATION

SERIES

LR4 4" Wide Linear Recessed

CEILING TYPE

G NEMA Type "G"

For flange installations use the Drywall Kit (DFK), ordered separately, see [Technical Info](#).

NOMINAL LENGTH

2 2'
3 3'
4 4'
6 6' (NEMA Type "G" only)
8 8' (NEMA Type "G" only)

TOTAL LAMPS

1, 2, or 4 (1- or 2-lamp cross-section only)

LAMP WATTAGE/TYPE

2' LAMP OPTIONS:

14T5S 2', 14-watt T5 (1- or 2-lamp ballast[s] only)
17 2', 17-watt T8
24T5H 2', 24-watt T5HO (1-lamp cross-section only)

3' & 6' LAMP OPTIONS:

21T5S 3', 21-watt T5 (1- or 2-lamp ballast[s] only)
25 3', 25-watt T8
39T5H 3', 39-watt T5HO (1-lamp cross-section only)

4' & 8' LAMP OPTIONS:

28T5S 4', 28-watt T5 (1- or 2-lamp ballast[s] only)
32 4', 32-watt T8
54T5H 4', 54-watt T5HO (1-lamp cross-section only)

SHIELDING

DMA Diffused matte acrylic, .080" thick
A12125 Acrylic, pattern #12, .125" thick

OPTIONS

For generic EM ballast options (must specify voltage), see [Technical info](#). Ballast size restrictions apply. Consult factory.

EQCLIPS Earthquake clips (4 clips for 2', 3', and 4' fixtures; 6 clips for 6' and 8')
CP Chicago Plenum (CCEA)

ACCESSORIES (Must be ordered separately)

Fixture must be installed prior to Drywall Kit (DFK).

DFK-0424W Drywall kit, 4" x 24", white
DFK-0436W Drywall kit, 4" x 36", white
DFK-0448W Drywall kit, 4" x 48", white

BALLAST TYPE

For dimming ballast options, see [Technical Info](#). Ballast size restrictions apply. Consult factory.

EB1 1-lamp electronic ballast
EB2 2-lamp electronic ballast
EB4 4-lamp electronic ballast (not available with T5S)
EB2/2 (2) 2-lamp electronic ballasts

VOLTAGE

120 120V
277 277V
UNV 120-277V
347 347V

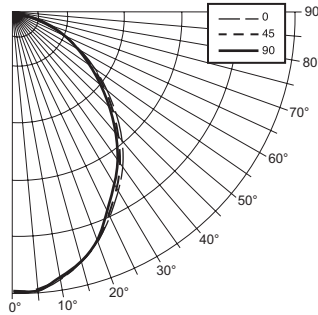


PHOTOMETRY INFORMATION

Catalog #: LR4G-4-132-DMA

TEST REPORT INFORMATION

- ▶ Test Report #: 17624.0
- ▶ Date: 09/26/13
- ▶ Lamp Type: F32T8/835
- ▶ Lamp Quantity: 1



CANDLEPOWER DISTRIBUTION

Vertical Angle	Horizontal Angle			Zonal Lumens
	0°	45°	90°	
0°	789.	789.	789.	
5°	794.	794.	794.	75.7
15°	737.	734.	731.	208.1
25°	646.	637.	629.	294.6
35°	551.	539.	526.	338.8
45°	421.	408.	393.	315.0
55°	299.	286.	276.	256.9
65°	191.	183.	176.	181.8
75°	96.	93.	88.	97.3
85°	26.	24.	23.	26.0
90°	0.	0.	0.	

ZONAL CAVITY COEFFICIENTS

	Ceiling			Wall			Floor		
	.80	.70	.50	.70	.50	.30	.70	.50	.30
0	.72	.72	.72	.71	.71	.71	.68	.68	.68
1	.67	.65	.62	.65	.63	.61	.61	.59	.57
2	.62	.57	.54	.60	.56	.53	.54	.51	.49
3	.57	.51	.47	.56	.50	.46	.49	.45	.42
4	.53	.46	.41	.51	.45	.41	.44	.40	.37
5	.48	.41	.36	.47	.40	.36	.39	.35	.32
6	.45	.37	.32	.43	.36	.32	.35	.31	.28
7	.41	.33	.28	.40	.33	.28	.32	.28	.25
8	.38	.30	.25	.37	.30	.25	.29	.25	.22
9	.35	.27	.22	.34	.27	.22	.26	.22	.19
10	.33	.25	.20	.32	.24	.20	.24	.20	.17

Effective Floor Cavity Reflectance = .20

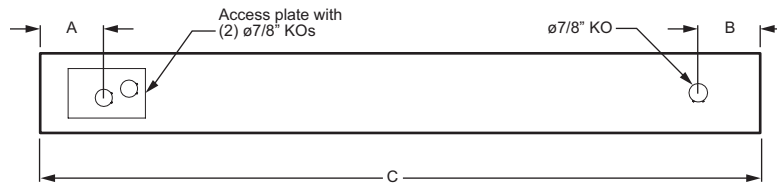
LUMEN SUMMARY

Zone	Lumens	% Lamp	% Fixture
0 - 30	578.	19.6	32.2
0 - 40	917.	31.1	51.1
0 - 60	1489.	50.5	83.0
0 - 90	1794.	60.8	100.0
Total Luminaire:			
0 - 180	1794.	60.8	100.0

Total Luminaire Optical Efficiency: **60.8%**
 IES Spacing Criteria: End = 1.1
 Diagonal = 1.1
 Across = 1.1

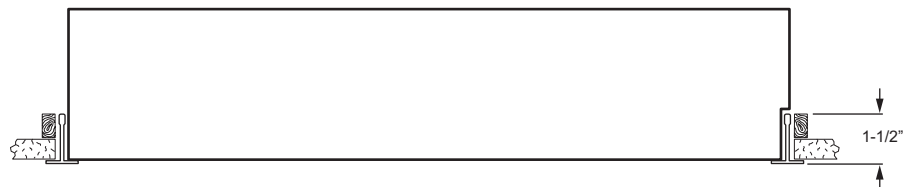
FIXTURE DETAILS

BACK VIEW



	A	B	C
2' Unit	2-1/2"	3-1/4"	23-15/16"
3' Unit	3-1/16"	3-1/4"	35-15/16"
4' Unit	3-1/16"	3-1/4"	47-15/16"

DFK SIDE VIEW



When using the DFK with Williams LR4 fixture, the structure surrounding the DFK at each end of fixture is to extend no more than 1-1/2" from the bottom of the "T" as shown. DFK spacing is set for 4-1/4". DFK only available for 2', 3', and 4' fixtures.