

# NARROW LED STRIP

# 75 LED

CATALOG #:	TYPE:
PROJECT:	NOTES:

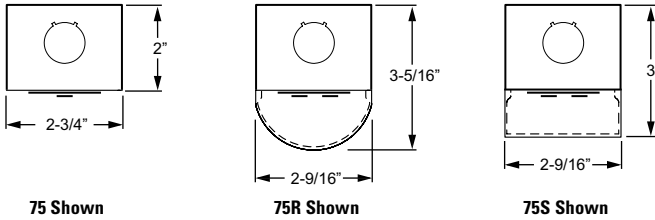
**EXAMPLE** **75** - **4** - **L85/835** - **OPTIONS** - **DIM** - **UNV**

SERIES    NOMINAL LENGTH    LUMEN PACKAGE    CRI & CCT    OPTIONS/ACCESSORIES    DRIVER    VOLTAGE



75 & 75R Shown

## CROSS SECTION



## ORDERING INFORMATION

### SERIES

**75** Narrow LED Strip  
**75R** Round Lens LED Strip  
**75S** Square Lens LED Strip

### NOMINAL LENGTH

**2** 2' (Actual length 22-1/2")  
**3** 3' (Actual length 33-9/16")  
**4** 4' (Actual length 44-5/8")  
**8** 8' (Actual length 89-1/4")

### LED PACKAGE

Example: L85/835			WATTAGE
LUMEN PACKAGE	NOMINAL LUMENS	MINIMUM CRI & CCT	
<b>2'</b>			
<b>L15</b>	1,500	<b>827</b> = 80CRI, 2700K <b>830</b> = 80CRI, 3000K <b>835</b> = 80CRI, 3500K <b>840</b> = 80CRI, 4000K <b>850</b> = 80CRI, 5000K	12
<b>L20</b>	1,900		20
<b>L30</b>	2,900		24
<b>L40</b> <sup>1</sup>	3,800		33
<b>3'</b>			
<b>L40</b>	4,000	<b>927</b> = 90CRI, 2700K <b>930</b> = 90CRI, 3000K <b>935</b> = 90CRI, 3500K <b>940</b> = 90CRI, 4000K <b>950</b> = 90CRI, 5000K	30
<b>L30</b>	3,200		23
<b>L50</b>	5,500		44
<b>L65</b>	6,600		49
<b>L85</b> <sup>1</sup>	8,500	<b>935</b> = 90CRI, 3500K <b>940</b> = 90CRI, 4000K <b>950</b> = 90CRI, 5000K	73
<b>8'</b>			
<b>L60</b>	6,500		43
<b>L100</b>	10,900		77
<b>L130</b>	13,200		97
<b>L170</b> <sup>1</sup>	17,000		146

Nominal lumen output based on 3500 CCT. Actual lumens may vary +/-5%. See specific photometric tests.

<sup>1</sup> Available with 75 only.

### OPTIONS

Suspended fixtures require [cord](#), see page 4.  
**C2** Two circuit quick-connect wiring harness (See [Technical Info](#) for complete quick-connect offering.)  
**EM/10WLP** Low-profile 10-watt emergency LED battery (4' and 8' only; must specify 120V or 277V)  
**EM/10W REMOTE** Remote mount 10-watt emergency LED battery (2' and 3' only; must specify 120V or 277V)

### ACCESSORIES (ordered separately)

See page 4 for [special reflectors](#), ordered separately.  
[Aircraft cable accessories](#) available, see page 4.  
**WG-75** 11-gauge white powder coat wireguard  
**315** 1-1/2" ceiling spacer  
**VBV** (2) Y-hangers  
**VBV-2** (2) Y-hangers and (2) 2' chains  
**RA-75** Row aligner (required when mounting with aircraft cables)

### DRIVER

Additional dimming drivers available, see [Technical Info](#).  
**DRV** Driver prewired for non-dimming applications  
**DIM** 10% dimming driver prewired for 0-10V low voltage applications

### VOLTAGE

**120** 120V  
**277** 277V  
**UNV** 120-277V  
**347** 347V (not available with EM drivers)

## FEATURES

- ▶ Small fixture profile allows inconspicuous placement in coves or confined spaces.
- ▶ Round and square lensed fixtures provide a clean look for architectural environments.
- ▶ Row applications produce continuous light with minimal interruption between fixtures.
- ▶ Diffuse acrylic lens on 75R and 75S enhances uniformity and minimizes glare.
- ▶ Variety of mounting accessories for surface and suspended applications.
- ▶ 3000K, 3500K, 4000K, or 5000K CCT.
- ▶ Special reflectors are available to provide precise light distribution (75 only).
- ▶ This fixture is proudly made in the USA.

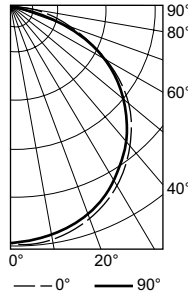


DesignLights Consortium Premium qualified product. Not all versions of this product may be DLC Premium qualified, see the DLC Qualified Products List at [www.designlights.org/QPL](http://www.designlights.org/QPL)



### PHOTOMETRY

**75-4-L85/840-DIM** Report #: 17875.0; 01/03/14 | Total Luminaire Output: 8470 lumens; 71.6 Watts  
Efficacy: 118.3 lm/W | 83.6 CRI; 4053K CCT | IES Spacing Criteria: End: 1.3, Across: 1.3



CANDLEPOWER DISTRIBUTION	Vertical Angle	Horizontal Angle			Zonal Lumens
		0°	45°	90°	
0		2874	2874	2874	
5		2895	2865	2854	273.8
15		2815	2778	2770	788.6
25		2643	2604	2590	1208.3
35		2397	2348	2320	1480.4
45		2050	1991	1975	1546.3
55		1622	1568	1548	1412.3
65		1115	1061	1040	1067.9
75		577	539	527	574.1
85		103	115	100	118.4
90		9	14	9	

LUMEN SUMMARY	Zone	Lumens	% Fixture
	0 - 30	2271	26.8
	0 - 40	3751	44.3
	0 - 60	6710	79.2
	0 - 90	8470	100.0
	0 - 180	8470	100.0

### SPECIFICATIONS

**Housing** – 22-gauge die-formed C.R.S.  
**Finish** – 92% minimum average reflective white polyester powder coat bonded to phosphate-free, multi-stage pretreated metal. All parts painted after fabrication to facilitate installation, increase efficiency, and inhibit corrosion.

**Electrical** – High quality mid-power LED board. Rated for 50,000 hours at 70% lumen maintenance (L70). 25°C maximum ambient operating temperature.

**Mounting** – Surface (ceiling or wall) or suspended.

#### Listings –

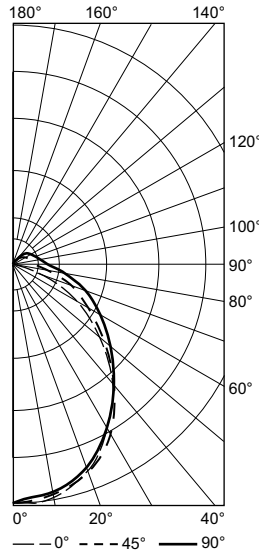
- cETLus conforms to UL STD 1598. Certified to CAN/CSA STD C22.2 No. 250.0. Suitable for damp locations
- DesignLights Consortium Premium qualified product. Not all versions of this product may be DLC Premium qualified, see the DLC Qualified Products List at [www.designlights.org/QPL](http://www.designlights.org/QPL)

**Warranty** – 5-year limited warranty, see [hew.com/warranty](http://hew.com/warranty).

### IMPORTANT:

Electrostatic sensitive unit. Observe precautions when handling.

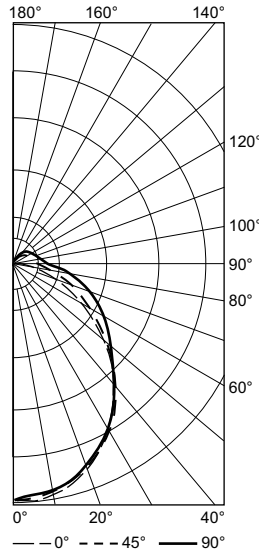
**75R-4-L65/835** Report #: 19750.0; 03/02/17 | Total Luminaire Output: 6223 lumens; 52 Watts  
Efficacy: 120 lm/W | 84.5 CRI; 3515K CCT | IES Spacing Criteria: End: 1.2, Across: 1.3, Diagonal: 1.3



CANDLEPOWER DISTRIBUTION	Vertical Angle	Horizontal Angle			Zonal Lumens
		0°	45°	90°	
0		1993	1993	1993	
5		2015	1986	1962	188.7
15		1924	1919	1906	540.1
25		1733	1772	1786	814.1
35		1472	1569	1622	971.5
45		1138	1285	1401	984.4
55		771	996	1144	872.4
65		477	724	858	684.5
75		205	484	596	471.2
85		49	308	385	290.5
90		7	239	313	
95		1	191	253	172.9
105		0	115	168	104.3
115		0	72	114	63.6
125		0	41	78	36.1
135		0	22	49	18.2
145		0	10	27	7.5
155		0	5	12	2.4
165		0	0	3	0.3
175		0	0	0	0
180		0	0	0	

LUMEN SUMMARY	Zone	Lumens	% Fixture
	0 - 30	1543	24.8
	0 - 40	2515	40.4
	0 - 60	4371	70.2
	0 - 90	5817	93.5
	90 - 120	341	5.5
	90 - 150	403	6.5
	90 - 180	405	6.5
	0 - 180	6223	100.0

**75S-4-L65/835** Report #: 19745.0; 03/02/17 | Total Luminaire Output: 6223 lumens; 52 Watts  
Efficacy: 120 lm/W | 84.6 CRI; 3518K CCT | IES Spacing Criteria: End: 1.2, Across: 1.2, Diagonal: 1.2



CANDLEPOWER DISTRIBUTION	Vertical Angle	Horizontal Angle			Zonal Lumens
		0°	45°	90°	
0		2100	2100	2100	
5		2118	2090	2061	198.4
15		2024	2007	1982	563.8
25		1807	1815	1785	832.2
35		1513	1545	1510	957.9
45		1165	1194	1217	929.1
55		809	892	992	807.4
65		475	645	785	634.7
75		207	416	572	432.3
85		36	248	377	254.8
90		0	189	299	
95		0	177	264	171.5
105		0	154	223	142.0
115		0	131	197	114.8
125		0	106	166	84.6
135		0	74	127	54.8
145		0	45	86	29.1
155		0	28	48	12.2
165		0	13	24	3.4
175		0	0	0	0.2
180		0	0	0	

LUMEN SUMMARY	Zone	Lumens	% Fixture
	0 - 30	1594	25.6
	0 - 40	2552	41.0
	0 - 60	4289	68.9
	0 - 90	5611	90.2
	90 - 120	428	6.9
	90 - 150	597	9.6
	90 - 180	612	9.8
	0 - 180	6223	100.0

### FIXTURE PERFORMANCE DATA

LED PACKAGE	WATTAGE	75 (no lens)		75R & 75S	
		DELIVERED LUMENS	EFFICACY (lm/W)	DELIVERED LUMENS	EFFICACY (lm/W)
2'					
L15	12	1457	121	1370	114
L20	15	1927	128	1812	121
L30	23	2872	125	2700	117
L40	34	3830	113	-	-
3'					
L40	30	4020	134	3750	125
4'					
L30	22	3162	149	2973	135
L50	42	5463	130	5135	122
L65	52	6620	127	6223	120
L85	73	8521	117	-	-
8'					
L60	44	6456	147	6069	138
L100	81	10927	135	10272	127
L130	103	13240	129	12446	119
L170	145	17041	118	-	-

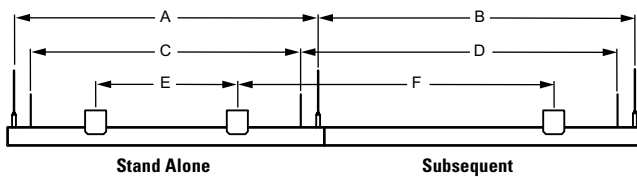
- Photometrics tested in accordance with IESNA LM-79. Results shown are based on 25°C ambient temperature.
- Wattage shown is average for 120V through 277V input.
- Results based on 3500K, 80 CRI, actual lumens may vary +/-5%
- Use multiplier table to calculate additional options.

### MULTIPLIER TABLE

COLOR TEMPERATURE	
CCT/CRI	CONVERSION FACTOR
2700K/80CRI	0.97
3000K/80CRI	0.99
3500K/80CRI	1.00
4000K/80CRI	1.03
5000K/80CRI	1.06

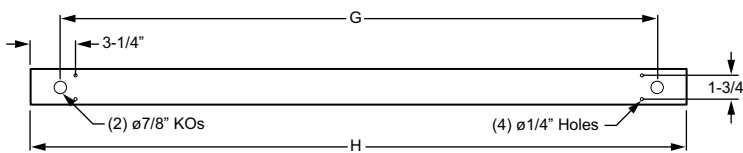
### FIXTURE DETAILS

#### MOUNTING INFORMATION



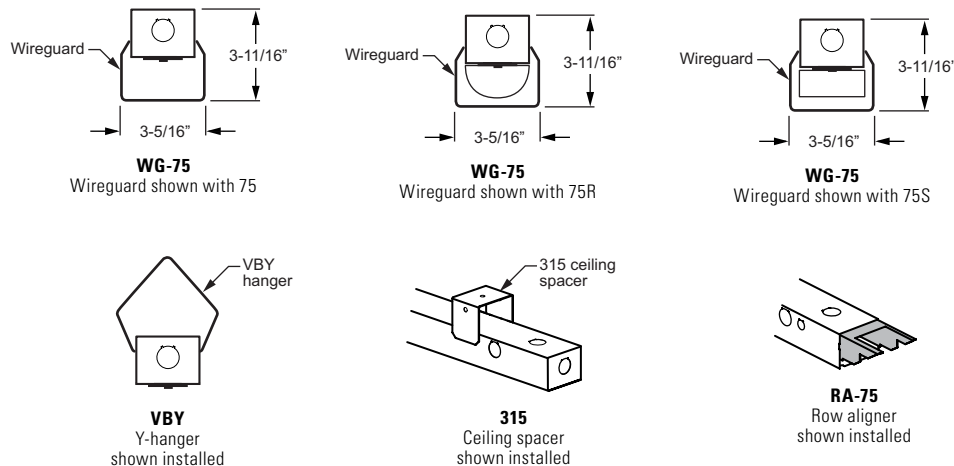
	MOUNTING LENGTH					
	AIRCRAFT CABLE		VBY HANGER		315 SPACER	
	A	B	C	D	E	F
2'	21-1/2"	22-1/2"	19"	22-1/2"	10"	22-1/2"
3'	32-1/2"	33-9/16"	30-1/16"	33-9/16"	21"	33-9/16"
4'	43-5/8"	44-5/8"	41-1/4"	44-5/8"	32"	44-5/8"
8'	88-3/16"	89-1/4"	85"	89-1/4"	77"	89-1/4"

#### BACK VIEW



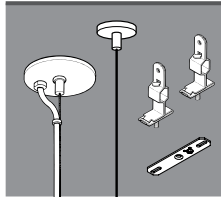
	7/8" KOs (G)	ACTUAL FIXTURE LENGTH (H)
2'	18-3/8"	22-1/2"
3'	29-1/2"	33-9/16"
4'	40-1/2"	44-5/8"
8'	85-1/8"	89-1/4"

### ACCESSORIES DETAILS



### AIRCRAFT CABLES (requires RA75 row aligner)

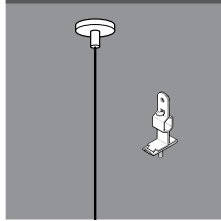
#### FEEDER FIXTURE – ø1/16" AIRCRAFT CABLE



EXAMPLE: ACF/D48		
MOUNTING	TYPE	LENGTH
ACF/ = Aircraft	D = 1' grid & hardpan	24 = 24"
	N = 9/16" grid	48 = 48"
	S = Slot grid	96 = 96"

Fixtures are provided with adjustable length aircraft cables and mounting hardware, must specify.

#### JOINER FIXTURE – ø1/16" AIRCRAFT CABLE



EXAMPLE: ACJ/D48		
MOUNTING	TYPE	LENGTH
ACJ/ = Aircraft	D = 1' grid & hardpan	24 = 24"
	N = 9/16" grid	48 = 48"
	S = Slot grid	96 = 96"

Fixtures are provided with adjustable length aircraft cables and mounting hardware, must specify.

**NOTE:** Electrical supply is brought into the feeder (or stand-alone) fixture, either as part of a row or as an individual mount unit. Joiner fixtures complete the row.

### CORD FOR SUSPENDED PRODUCT

Suspended fixtures require cord. Please specify cord type using ordering example below.

EXAMPLE: S2438/W				
CORD TYPE	LENGTH	# OF CONDUCTORS	WIRE SIZE	COLOR
S = Straight	24 = 24"	3 = 3	8 = 18-guage	/B = Black /W = White
	48 = 48"	4 = 4		
	96 = 96"	5 = 5		

### SPECIAL REFLECTORS (ordered separately, only available with 75; cannot be used with wireguard accessories)

Example: R1172-4-75LED REFL

