

LENSED LED STRIP

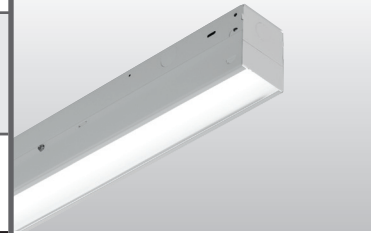
75L

LED

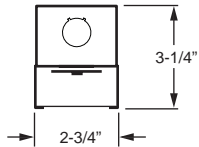
CATALOG #:	TYPE:
PROJECT:	NOTES:

EXAMPLE → **75L** - **4** - **L65/835** - **A12125** - **OPTIONS** - **DIM** - **UNV**

SERIES NOMINAL LENGTH LUMEN PACKAGE CRI & CCT SHIELDING OPTIONS DRIVER VOLTAGE



CROSS SECTION



ORDERING INFORMATION

SERIES
75L Lensed Strip

NOMINAL LENGTH

2	2' (Actual length 22-1/2")
4	4' (Actual length 44-5/8")
8	8' (Actual length 89-1/4")

LED PACKAGE

Example: L65/835			
LUMEN PACKAGE	NOMINAL LUMENS	MINIMUM CRI & CCT	AVERAGE SYSTEM WATTAGE
2'			
L10	1,000	827 = 80CRI, 2700K 830 = 80CRI, 3000K 835 = 80CRI, 3500K 840 = 80CRI, 4000K 850 = 80CRI, 5000K	11
L15	1,500		17
L20	2,000		24
L32	3,200		33
4'			
L20	2,000	927 = 90CRI, 2700K 930 = 90CRI, 3000K 935 = 90CRI, 3500K 940 = 90CRI, 4000K 950 = 90CRI, 5000K	23
L38	3,800		41
L50	5,000		56
L65	6,500		67
8'			
L40	4,000	940 = 90CRI, 4000K 950 = 90CRI, 5000K	42
L76	7,600		78
L100	10,000		111
L130	13,000		135

Nominal lumen output based on 3500 CCT. Actual lumens may vary +/-5%. See specific photometric tests. Additional LED lumen packages available, see options.

SHIELDING

A12125 Acrylic, pattern #12, .125" thick
DMA Diffused matte acrylic, .080" thick

OPTIONS

Suspended fixtures require [cord](#), see page 3.

C2_ Two circuit quick-connect wiring harness (See [Technical Info](#) for complete quick-connect offering.)

EM/10WLP Low-profile 10-watt emergency LED battery (4' and 8' only; must specify 120V or 277V; not available with L65 and L130 lumen packages)

EM/10W REMOTE Remote mount 10-watt emergency LED battery (2' only; must specify 120V or 277V; not available with L32 lumen package)

(L__) Additional lower lumen packages available. Specify in increments of 100 nominal lumens. Option must be specified with next higher lumen package.
Example: 5,500 nominal lumens = 75L-4-L65/835-(L55).

ACCESSORIES

[Aircraft cable accessories](#) available, see page 3.

WG-75 11-gauge white powder coat wireguard
315 1-1/2" ceiling spacer
VBV (2) Y-hangers
VBV-2 (2) Y-hangers and (2) 2' chains
RA-75 Row aligner (required when mounting with aircraft cables)

DRIVER

Additional dimming drivers available, see [Technical Info](#).

DRV Driver prewired for non-dimming applications
DIM 10% dimming driver prewired for 0-10V low voltage applications

VOLTAGE

120 120V
277 277V
UNV 120-277V
347 347V (not available with EM drivers)

FEATURES

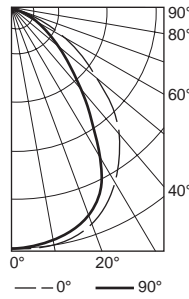
- ▶ Small fixture profile allows inconspicuous placement in coves or confined spaces.
- ▶ Frosted or prismatic lens protects LEDs and improves appearance.
- ▶ Row applications produce continuous light with minimal interruption between fixtures.
- ▶ Power and light levels can be custom set to meet energy and design needs in applications ranging from coves to high-ceiling common areas.
- ▶ 3000K, 3500K, 4000K, or 5000K CCT.
- ▶ This fixture is proudly made in the USA.



LED

PHOTOMETRY

75-4-L65/840-A12125 Report #: 17756.0; 12/11/13 | Total Luminaire Output: 6523 lumens; 71.1 Watts
 Efficacy: 91.7 lm/W | 82.3 CRI; 35378K CCT | IES Spacing Criteria: End: 1.3, Across: 1.1



CANDLEPOWER DISTRIBUTION	VERTICAL ANGLE	HORIZONTAL ANGLE			ZONAL LUMENS
		0°	45°	90°	
0		3129.	3129.	3129.	
5		3183.	3121.	3087.	297.8
15		3082.	3030.	3003.	858.8
25		2852.	2801.	2706.	1290.3
35		2450.	2232.	1855.	1376.6
45		1873.	1396.	1083.	1122.7
55		1218.	815.	662.	776.9
65		621.	394.	406.	450.5
75		312.	203.	254.	256.8
85		92.	69.	82.	92.3
90		0.	0.	0.	

LUMEN SUMMARY	ZONE	LUMENS	% FIXTURE
	0 - 30	2447.	37.5
	0 - 40	3823.	58.6
	0 - 60	5723.	87.7
	0 - 90	6523.	100.0
	0 - 180	6523.	100.0

SPECIFICATIONS

Housing – 22-gauge die-formed C.R.S.
Finish – 92% minimum average reflective white polyester powder coat bonded to phosphate-free, multi-stage pretreated metal. All parts painted after fabrication to facilitate installation, increase efficiency, and inhibit corrosion.

Shielding – Acrylic, pattern #12, .125" thick.

Electrical – High quality mid-power LED board. Rated for 50,000 hours at 70% lumen maintenance (L70). 25°C maximum ambient operating temperature.

Mounting – Surface (ceiling or wall) or suspended.

Labels – cETLus conforms to UL STD 1598. Certified to CAN/CSA STD C22.2 No. 250.0. Suitable for damp locations.

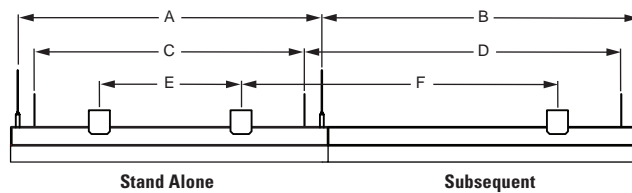
Warranty – 5-year limited warranty, see hew.com/warranty.

IMPORTANT:

Electrostatic sensitive unit. Observe precautions when handling.

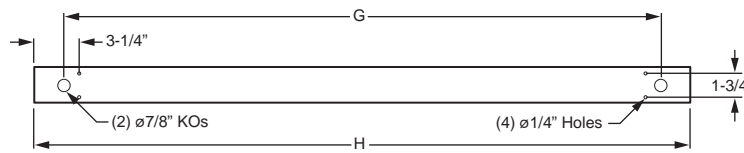
FIXTURE DETAILS

MOUNTING INFORMATION



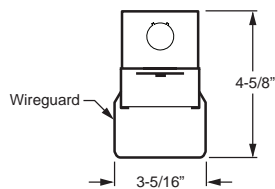
	MOUNTING LENGTH					
	AIRCRAFT CABLE		VBY HANGER		315 SPACER	
	A	B	C	D	E	F
2'	21-1/2"	22-1/2"	19"	22-1/2"	10"	22-1/2"
4'	43-5/8"	44-5/8"	41-1/4"	44-5/8"	32"	44-5/8"
8'	88-3/16"	89-1/4"	85"	89-1/4"	77"	89-1/4"

BACK VIEW

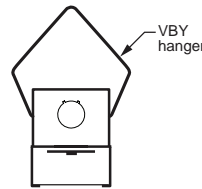


	7/8" KOs (G)	ACTUAL FIXTURE LENGTH (H)
2'	18-3/8"	22-1/2"
4'	40-1/2"	44-5/8"
8'	85-1/8"	89-1/4"

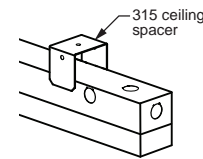
ACCESSORIES DETAILS



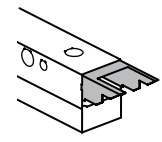
WG-75
Wireguard shown installed



VBY
Y-hanger shown installed



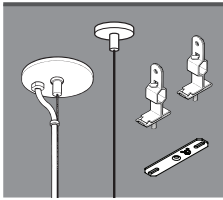
315
Ceiling spacer shown installed



RA-75
Row aligner shown installed

AIRCRAFT CABLES (requires RA75 row aligner)

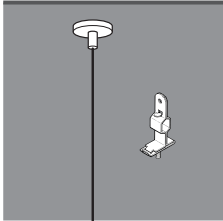
FEEDER FIXTURE – ø1/16" AIRCRAFT CABLE



EXAMPLE: ACF/D48		
MOUNTING	TYPE	LENGTH
ACF/ = Aircraft	D = 1' grid & hardpan	24 = 24"
	N = 9/16" grid	48 = 48"
	S = Slot grid	96 = 96"

Fixtures are provided with adjustable length aircraft cables and mounting hardware, must specify.

JOINER FIXTURE – ø1/16" AIRCRAFT CABLE



EXAMPLE: ACJ/D48		
MOUNTING	TYPE	LENGTH
ACJ/ = Aircraft	D = 1' grid & hardpan	24 = 24"
	N = 9/16" grid	48 = 48"
	S = Slot grid	96 = 96"

Fixtures are provided with adjustable length aircraft cables and mounting hardware, must specify.

NOTE: Electrical supply is brought into the feeder (or stand-alone) fixture, either as part of a row or as an individual mount unit. Joiner fixtures complete the row.

CORD FOR SUSPENDED PRODUCT

Suspended fixtures require cord. Please specify cord type using ordering example below.

EXAMPLE: S2438/W				
CORD TYPE	LENGTH	# OF CONDUCTORS	WIRE SIZE	COLOR
S = Straight	24 = 24"	3 = 3	8 = 18-gauge	/B = Black /W = White
	48 = 48"	4 = 4		
	96 = 96"	5 = 5		

