

SUSPENDED INDIRECT ARCHITECTURAL – EDGELIT

SIA2

LED

CATALOG #:

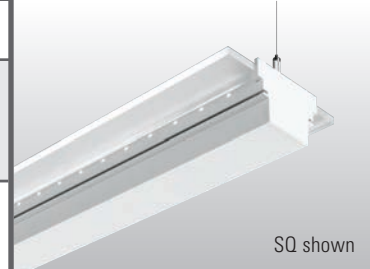
TYPE:

PROJECT:

NOTES:

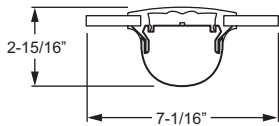
EXAMPLE → **SIA2 - RD - 4 - L20/835 - AC/D48 - OPTIONS - DRV - UNV**

SERIES FIXTURE STYLE NOMINAL LENGTH LUMEN PACKAGE CRI & CCT MOUNTING OPTIONS DRIVER VOLTAGE

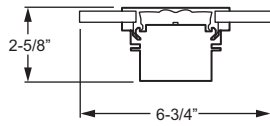


SQ shown

CROSS SECTIONS



Shown with RD



Shown with SQ

ORDERING INFORMATION

SERIES

SIA2 Suspended Indirect Architectural – Edgelit

FIXTURE STYLE

RD Round
SQ Square

NOMINAL LENGTH

Stand-alone – 4' & 8' nominal lengths, fixture ships assembled.
Example: **4** = 4'.

Row-mount – Lengths specified in 4' increments
Example: **12** = 12'.

PRODUCT BUILDER

Simplify ordering & layout design with the Williams Linear Product Builder at hew.com

LED PACKAGE

Example: L20/835			
LUMEN PACKAGE	NOMINAL LUMENS PER FOOT	MINIMUM CRI & CCT	WATTAGE PER FOOT
L10	1,000	830 = 80 CRI, 3000K	8.1
L15	1,500	835 = 80 CRI, 3500K	12.2
L20	2,000	840 = 80 CRI, 4000K	16.3

Nominal lumen output based on 3500 CCT. Actual lumens may vary +/-5%, see fixture performance data. Additional lumen packages available, see options.

MOUNTING

See page 2 for details.

EXAMPLE: AC/D48		
MOUNTING	TYPE	LENGTH
AC/ = Aircraft	D = 1" grid & hardpan	24 = 24"
	N = 9/16" grid	48 = 48"
	S = Slot grid	96 = 96"

OPTIONS

For color options, visit the SIA2 online at hew.com.

EM/10W REMOTE

Remote mount 10-watt emergency LED driver, 4' sections only (requires remote mounted LED driver, provided with remote mounting enclosure for installation in ceiling above fixture. Separate power and control wiring to remote box required. Consult factory for specifications; not available with OCC sensor)

(L__)

Additional lower lumen packages available. Specify in increments of 100 nominal lumens. Option must be specified with next higher lumen package.

OCCWS FSP-211-L_

Example: 1,600 nominal lumens = SIA2-RD-4-L20/835-(L16)
Factory-installed occupancy sensor, 120V or 277V only, must specify L2 or L3 lens type. See page 3 for details (not available with EM/10W REMOTE)

ACCESSORIES

FSIR-100

Remote controller for occupancy sensor, specify quantity required per project.

DRIVER

Additional dimming drivers available, see [Technical Info](#).

DRV

Driver prewired for non-dimming applications

DIM

Driver prewired for 0-10V low voltage dimming applications

VOLTAGE

120 120V
277 277V
UNV 120-277V
347 347V

FEATURES

- ▶ Attractive, architectural details are captured in this compact suspended LED luminaire.
- ▶ Edgelit frosted acrylic and glowing perforated elements make a dramatic design statement.
- ▶ Precision uplight optics provide soft, uniform indirect illumination.
- ▶ Designed for stand-alone and continuous row-mount applications.
- ▶ Multiple dimming protocols available.
- ▶ This fixture is proudly made in the USA.



LED

SPECIFICATIONS

Housing – Extruded aluminum with milled aluminum end caps.

Shielding – Extruded frosted acrylic uplight lens with diffuse sand blasted acrylic edgELIT panels.

Finish – Textured matte white polyester TGIC powder coat bonded to phosphate-free, multi-stage pretreated metal. All parts painted after fabrication to facilitate installation, increase efficiency, and inhibit corrosion.

Electrical – High quality mid-power LED boards. L70 at 50,000 hours.

Mounting – Suspended. 1/16" diameter adjustable steel leveling aircraft cable and mounting hardware necessary for grid or hard ceiling applications provided.

Labels – cETLus conforms to UL STD 1598. Certified to CAN/CSA STD C22.2 No. 250.0. Suitable for damp locations.

Qualifications – RoHS compliant.

Warranty – 5-year limited fixture warranty, see hew.com/warranty.

IMPORTANT:

Electrostatic sensitive unit. Observe precautions when handling.

FIXTURE STYLES

RD (Round)



SQ (Square)



FIXTURE PERFORMANCE DATA

LED PACKAGE	WATTAGE	DELIVERED LUMENS	EFFICACY (lm/W)
4'			
L10	31.5	3902	123.9
L15	47.9	5853	122.2
L20	64.2	7804	121.6
8'			
L10	63.0	7805	123.9
L15	95.8	11707	122.2
L20	128.3	15608	121.7

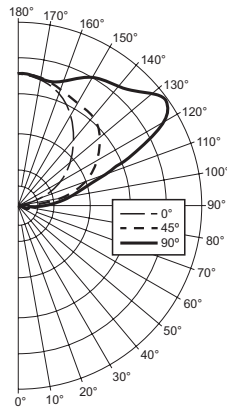
- Photometrics tested in accordance with IESNA LM-79. Results shown are based on 25°C ambient temperature.
- Wattage shown is average for 120V through 277V input.
- Results based on 3500K, 80 CRI, actual lumens may vary +/-5%
- Use multiplier table to calculate additional options.

MULTIPLIER TABLE

COLOR TEMPERATURE	
CCT/CRI	CONVERSION FACTOR
3000K/80CRI	0.99
3500K/80CRI	1.00
4000K/80CRI	1.03
5000K/80CRI	1.06

PHOTOMETRY

SIA2-RD-4-L20/835 Total Luminaire Output: 7804 lumens; 64 Watts | Efficacy: 122 lm/W | 82.8 CRI; 3500K CCT



Vertical Angle	Horizontal Angle			Zonal Lumens
	0°	45°	90°	
0	6	6	6	
5	2	3	7	0
15	2	5	11	2
25	2	11	29	7
35	2	25	36	14
45	3	29	61	25
55	8	51	116	50
65	15	68	140	70
75	12	69	141	75
85	3	89	244	132
90	5	268	377	
95	52	463	584	401
105	265	827	973	772
115	528	1146	1890	1192
125	790	1355	2487	1348
135	1064	1544	2203	1229
145	1297	1604	2082	1042
155	1538	1649	1927	784
165	1694	1743	1763	492
175	1787	1807	1790	171
180	1808	1808	1808	

LUMEN SUMMARY	Zone	Lumens	% Fixture
	0 - 30	9	0
	0 - 40	23	0
	0 - 60	99	1
	0 - 90	375	5
	90 - 120	2364	30
	90 - 150	5983	77
	90 - 180	7429	95
	0 - 180	7804	100

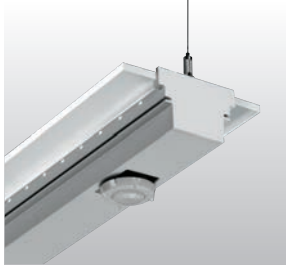
FIXTURE DETAILS

MOUNTING INFORMATION (center to center mounting cable)	Nominal Length	A	B	C
	4'	46-1/8"	46-1/4"	47-1/16"
	8'	93-3/16"	93-1/4"	94-1/8"

STANDARD HARDWARE (Grid and Hardpan)

FEEDER	JOINER	Notes:
		<ul style="list-style-type: none"> Fixtures are provided with adjustable length aircraft cables and mounting hardware, must specify. Electrical supply is brought into the feeder fixture, either as part of a row or as a stand-alone unit. Joiner fixtures complete the row. The feeder kits are standard with a 5" canopy to cover the junction box and a 2" canopy at the non-feed point. No J-box is required at non-feed points.

INTEGRAL OCCUPANCY SENSOR DETAILS



EXAMPLE **OCCWS FSP-211 - L2**

OCCUPANCY
SENSOR

LENS

ORDERING INFORMATION

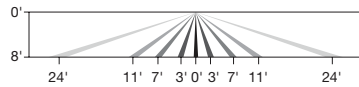
OCCWS FSP-211-__ Factory-installed occupancy sensor, must specify lens (120V or 277V only)

LENS

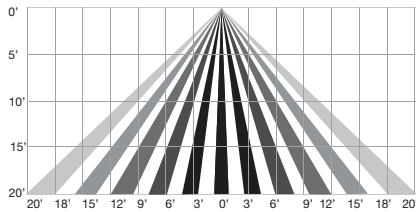
L2 Coverage at 8' mounting height: ø48'
L3 Coverage at 20' mounting height: ø40'

- ▶ Fully adjustable high and low dimmed light levels.
- ▶ Designed for LED fixtures; rated for extreme temperatures and up to 200,000 on/off cycles.
- ▶ Hold-off setpoint with automatic calibration option for convenience and added energy savings.
- ▶ Adjustable via handheld wireless configuration tool.
- ▶ Adjustable time delay and cutoff delay.
- ▶ Factory set to 10% dimming at 5 minutes, cutoff at 1 hour.

COVERAGE PATTERNS



L2 Lens



L3 Lens

FSIR-100



Optional occupancy sensor remote

