

VOLTAIRE SMALL ARCHITECTURAL FLOOD LIGHT

VF1

LED

CATALOG #:	TYPE:
PROJECT:	NOTES:

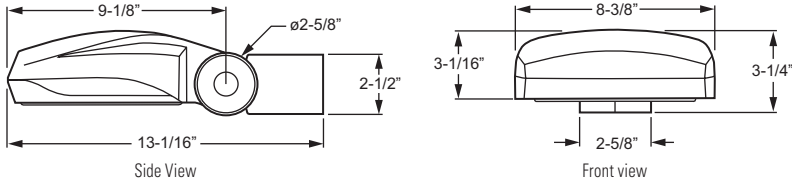


EXAMPLE VF1 - L35/750 - MF - SR - DBZ - OPTIONS - DIM - UNV

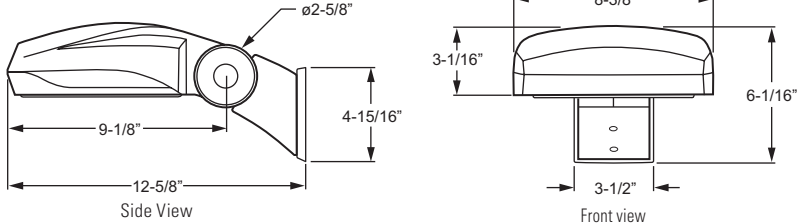
SERIES LUMEN PACKAGE CRI & CCT DISTRIBUTION MOUNTING FINISH OPTIONS DRIVER VOLTAGE

CROSS SECTIONS

STRAIGHT ARM (EPA: 0.46/Weight: 8 Lbs)



CURVED ARM (EPA: 0.46/Weight: 8 Lbs)



ORDERING INFORMATION

SERIES

VF1 Voltaire Small Architectural Flood Light

LED PACKAGE

Note: See page 3 for fixture performance data.

EXAMPLE: L35/750			
LUMEN PACKAGE	NOMINAL LUMENS	MINIMUM CRI & CCT	WATTAGE
L20	1,900	730 = 70 CRI, 3000K 740 = 70 CRI, 4000K	18
L35	3,500	750 = 70 CRI, 5000K	36

DISTRIBUTION

See page 2 for distribution details.

NS Narrow spot (3H x 3V)
MF Medium flood (5H x 5V)
WF Wide flood (6H x 6V)
HS Horizontal spot (7H x 5V)
VF Vertical flood (5H x 5V)
HF Horizontal flood (7H x 5V)

MOUNTING

SR Straight arm
CU Curved arm (vertical surface mount, downlight orientation only, includes cast adapter and mounting plate)

FINISH OPTIONS

For custom color, visit the VF1 at hew.com.¹

BLK Black (RAL #9004)
DBZ Dark bronze
DBR Medium bronze
GRAY Standard gray
SLV Satin aluminum (RAL #9006)
WHT White (RAL #9003)

OPTIONS (Factory-installed)

See page 2 option details.

PC Factory-installed button-style photocell (120V, 208V, 240V, or 277V only; must specify voltage)
WG Wireguard, 11-gauge tempered steel with chrome powder-coat finish, factory-installed²
FVS Flush vandal shield, 3/16" clear polycarbonate, factory-installed²

ACCESSORIES (Ordered separately, field-installed)

Accessories ordered separately, see page 4 for details.
 Mounting accessories available (straight arm only), ordered separately, see page 4 for details.

VFICS Cutoff shield, field-installed²
VFIFS Full cutoff shield, field-installed²

DRIVER

DIM 10% dimming driver prewired for 0-10V low voltage applications

VOLTAGE

120 120V
208 208V
240 240V
277 277V
UNV 120-277V
347 347V
480 480V

FEATURES

GENERAL

- Engineered with the highest quality materials to ensure reliability, performance, and quality.
- Low-profile, contoured architectural design blends with both contemporary or traditional architecture.
- Architectural appearance is preserved via concealed heatsink design.
- 40% energy savings over HID systems.
- Six standard finish options.
- This fixture is proudly made in the USA.

CONSTRUCTION

- Sealed, die-cast housing with stainless steel fasteners is rugged and durable.
- Sturdy, integral knuckle design features locking teeth for reliable performance.
- IP66 Rated
- ANSI 3G (Straight arm fixture only.)

PERFORMANCE & LIFETIME

- Rated >50,000 hours at 70% lumen maintenance (L70).
- Delivers 1,900-3,500 nominal lumens
- Up to 108 lumens per watt
- ANSI 3000K, 4000K and 5000K CCT, minimum 70 CRI

THERMAL

- Integral die-cast aluminum heatsink provides optimal passive thermal management.
- Rated for -30°C to 50°C ambient operating temperature.

OPTICAL

- Acrylic precision optics produce industry-standard floodlight distributions to provide precise optical control.
- Optional half and full cutoff shields minimize glare and unwanted spill light.

ELECTRICAL

- 0-10V dimming standard.
- 10kA/10kV surge protection standard.
- Single-board LED system design minimizes electrical connection points for increased reliability.



¹ For custom colors other than RAL, manufacturers' code plus two swatches (minimum 1" square) required.

² Fixture can accommodate only one face-mounted option/accessory.



LED

SPECIFICATIONS

Housing – Die-cast aluminum enclosure, sealed to protect electrical components.

Thermal Management – Integral die-cast aluminum heatsink provides passive thermal management. Rated -30°C to 50°C ambient operating temperature.

Optical System – Precision, injection-molded, refractive acrylic lensing produces standard NEMA floodlight distributions. Clear tempered glass lens.

LED Assembly – Circuit board design incorporates TVS (transient-voltage-suppression) diodes to protect against ESD events. ANSI 3000K, 4000K, and 5000K CCT, minimum 70 CRI LEDs.

LED Driver – Class 2 constant-current driver, 0-10V dimming.

Electrical – 120-277, 347, and 480 VAC input range; 50-60Hz; power factor > .90; THD < 20% at full load. FCC Class A compliant. 10kA/10kV surge protection standard.

Finish – Super durable polyester powder coat bonded to phosphate-free, multi-stage pretreated metal, meets and exceeds AAMA 2604 specifications for outdoor durability. Available in six standard colors. Custom colors available.

Mounting – Straight arm slip-fits $\phi 1-1/2"$ ($\phi 1-7/8"$ O.D.) tenon. Curved arm mounts to vertical surface or pole, downlight orientation only using cast adapter and mounting plate provided. Must be anchored to adequate structure that can safely support fixture weight.

Listings –

cCSAus listed to STD 22.2 No. 250.0 certified as luminaire suitable for wet locations.

DesignLights Consortium qualified product. Not all versions of this product may be DLC qualified, see the DLC Qualified Products List at www.designlights.org/QPL.

L70 > 50,000 hours per IES TM-21. Tested to IES LM-79-08 standards.

Lighting Facts listed.

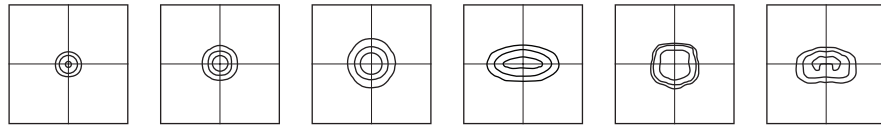
IDA Dark-Sky approved (horizontal mount only with LEDs facing ground).

IP66 rated.

Meets the American National Standard for Roadway and Area Lighting Equipment – Luminaire Vibration (ANSI C136.31-2010). Straight arm fixture only. RoHS compliant.

Warranty – 5-year limited warranty, see hew.com/warranty.

DISTRIBUTION DETAILS

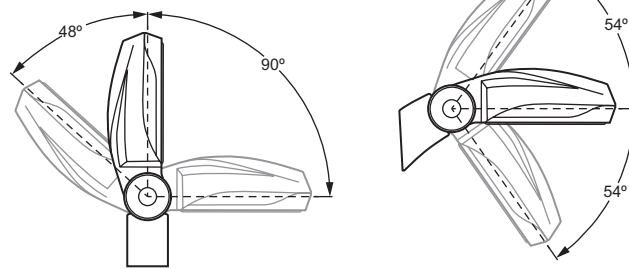


NS Narrow Spot (3H x 3V)
MF Medium Flood (5H x 5V)
WF Wide Flood (6H x 6V)
HS Horizontal Spot (7H x 5V)
VF Vertical Flood (5H x 5V)
HF Horizontal Flood (7H x 5V)

FIXTURE DETAILS

FIXTURE ADJUSTMENT DETAIL

Easily adjusts with locking teeth in 6° increments.



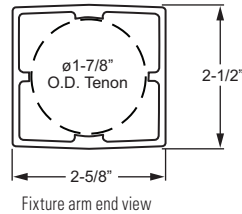
Straight Arm (SR)

Curved Arm (CU)

MOUNTING DETAILS

STRAIGHT ARM (SR) MOUNTING

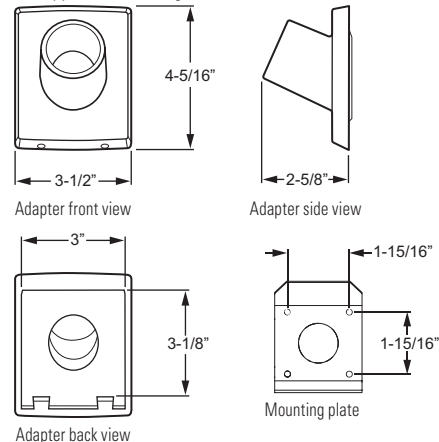
Mounts horizontally or vertically to $\phi 1-1/2"$ ($\phi 1-7/8"$ O.D.) tenon. Up or down light applications. 360° rotation on mounting tenon. Additional mounting accessories available, see page 4 for details.



Fixture arm end view

CURVED ARM (CU) MOUNTING

Mounts to vertical surface or pole, downlight orientation only, using cast adapter and mounting plate provided. Must be anchored to adequate structure that can safely support fixture weight.



Adapter front view

Adapter side view

Adapter back view

Mounting plate

OPTIONS (Factory-installed)



FVS¹

Flush vandal shield, 3/16" clear polycarbonate, factory-installed¹



WG¹

Wireguard, 11-gauge tempered steel with chrome powder-coat finish, factory-installed¹



PC

Factory-installed button-style photocell, (120V, 208V, 240V, or 277V only; must specify voltage)

¹ Fixture can accommodate only one face-mounted option/accessory.

FIXTURE PERFORMANCE DATA

LUMEN PACKAGE	AVERAGE SYSTEM WATTAGE ¹	CURRENT (MA)	DISTRIBUTION	EFFICACY (LM/W) ^{2,3}	FLUX (LM) ^{1,2}	NEMA CLASSIFICATION	
						HORIZONTAL	VERTICAL
L20	18	350	NS	97	1742	3	3
			MF	95	1711	5	5
			WF	104	1853	6	6
			HS	103	1836	7	5
			VF	108	1942	5	5
			HF	108	1948	7	5
L35	36	700	NS	87	3131	3	3
			MF	85	3075	5	5
			WF	93	3331	6	6
			HS	92	3300	7	5
			VF	97	3490	5	5
			HF	97	3501	7	5

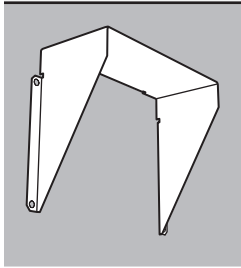
¹ Efficacy and flux shown are for 5000K CCT. Flux multipliers: 0.96 for 4000K, 0.86 for 3000K
² Photometrics tested in accordance with IESNA LM-79. Results shown are at 25°C ambient temperature.
³ Restrictions may apply, see DLC qualified products list at www.designlights.org

SEE BACK FOR ACCESSORIES



ACCESSORIES (Ordered separately, field-installed)

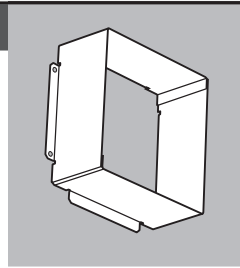
NOTE: Fixture can accommodate only one face-mounted option/accessory.



CUTOFF SHIELD

VF1CS-___ Cutoff shield, 1/16" thick aluminum, field-installed. Must specify finish. Includes (4) #6-32 screws. 6-1/2" x 5-1/4" x 2-1/2"
EPA: 0.12/Weight: 0.20 Lbs.

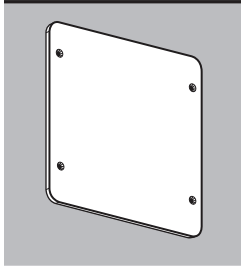
Example: VF1CS-DBZ



FULL CUTOFF SHIELD

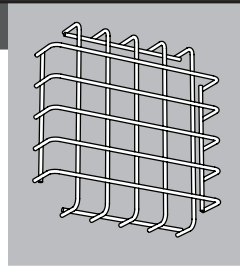
VF1FS-___ Full cutoff shield, 1/16" thick aluminum, field-installed. Must specify finish. Includes (4) #6-32 screws. 6-5/8" x 6-5/8" x 2-1/2"
EPA: 0.19/Weight: 0.39 Lbs.

Example: VF1FS-DBZ



VANDAL SHIELD KIT (Field-installed)

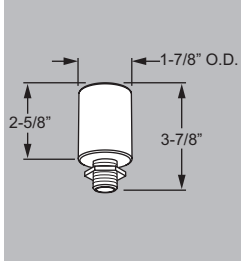
VF1FVS Flush vandal shield kit, 3/16" clear polycarbonate, field-installed. Includes (4) #6-32 screws and clips.
EPA: 0.01/Weight: 0.26 Lbs.



WIREGUARD KIT (Field-installed)

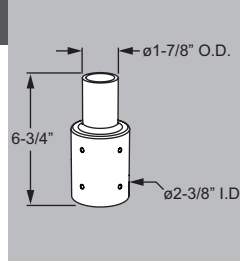
WG-VF1 Wireguard kit, 11-gauge tempered steel with chrome powder-coat finish, field-installed. Includes (8) #6-32 screws and clips.
EPA: 0.12/Weight: 0.38 Lbs.

MOUNTING ACCESSORIES – STRAIGHT ARM ONLY (Ordered separately)



THREADED ADAPTER

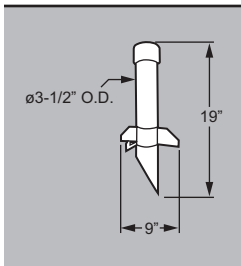
VF1TA 1/2" NPS stainless steel threaded nipple with hex locknut on a cast aluminum anodized ϕ 1-7/8" O.D. adapter
EPA: 0.00/Weight: 0.61 Lbs.



TENON REDUCER

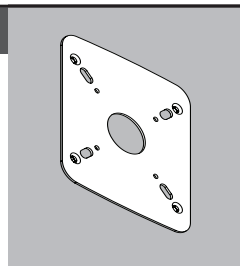
VF1TR-___ Die-cast aluminum adapter/reducer, slipfits a ϕ 2" tenon. Must specify finish.
EPA: 0.08/Weight: 1.37 Lbs.

Example: VF1TR-DBZ



GROUND STAKE

STK Ground stake, molded black plastic with integral splice compartment and 1/2" NPS threaded entry point for fixture mounting (requires VF1TA accessory, above)



WALL COVER

VF1WC-___ 4" j-box cover for curved arm fixture, must specify finish.

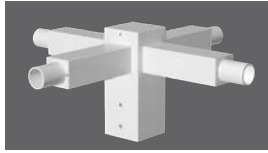
Example: VF1WC-DBZ

STRAIGHT ARM MOUNTING ACCESSORIES

VF1

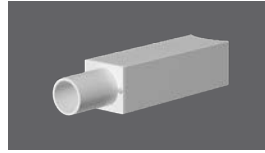
SERIES

Note: Tenons cannot be mounted in down orientation. Mounting accessories are for use with straight arm (SR) fixtures only.



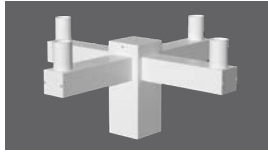
TMHT Pole Top Tenon - Horizontal Fixture Mount
Example: **VF1-TMHT-SQ-T238-S-DBZ**

- Mounts on 2-3/8" - 3" pole top tenons
- Round or square to match pole shape
- Mounting configurations for one to four fixtures
- Center tenon option available



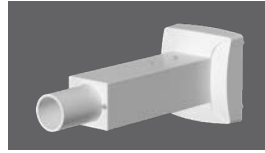
DMHT Direct Mount - Horizontal Fixture
Example: **VF1-DMHT-SQ-S-DBZ**

- Mounts to round or square poles
- Fixture can be mounted for up or downlight



TMVT Pole Top Tenon - Vertical Fixture Mount
Example: **VF1-TMVT-SQ-T238-S-DBZ**

- Mounts on 2-3/8" - 3" pole top tenons
- Round or square to match pole shape
- Vertical fixture tenons
- Mounting configurations for one to four fixtures
- Center tenon option available



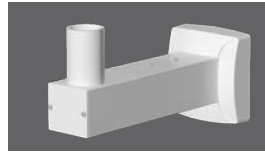
WMHT Wall Mount - Horizontal Fixture
Example: **VF1-WMHT-DBZ**

- Cast cover matches fixture aesthetics
- Fixture can be mounted for up or downlight



HT Horizontal Pole Top Tenon
Example: **VF1-HT-SQ-T238-S-DBZ**

- Mounts on 2-3/8" - 3" pole top tenons
- Round or square to match pole shape
- Horizontal fixture tenons
- Mounting configurations for one to four fixtures
- Center tenon option available



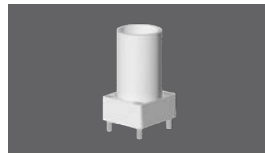
WMVT Wall Mount - Vertical Fixture
Example: **VF1-WMVT-DBZ**

- Cast cover matches fixture aesthetics
- Fixtures can be rotated 360° around tenon



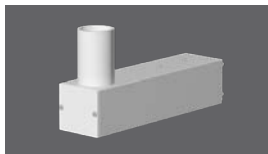
VT Vertical Pole Top Tenon
Example: **VF1-VT-SQ-T238-DBZ**

- Mounts on 2-3/8" - 3" pole top tenons
- Round or square to match pole shape
- Vertical fixture tenon



SM Surface Mount
Example: **VF1-SM-DBZ**

- Mounts to any flat surface, with tenon in upward or horizontal orientation
- Fixtures can be rotated 360° around tenon



DMVT Direct Mount - Vertical Fixture
Example: **VF1-DMVT-SQ-S-DBZ**

- Mounts to round or square poles
- Fixtures can be rotated 360° around tenon



ST Stanchion Mount
Example: **VF1-ST-DBZ**

- Profile matches VF1 and VF2 arms
- Stanchion arm base cover and fixture rotate 360° around base

ORDERING INFORMATION

EXAMPLE

VF1-TMVT - SQ - T238 - S - DBZ - OPTIONS

t SERIES
t SHAPE
t TENON SIZE
t MOUNTING CONFIGURATION
t FINISH OPTIONS
t OPTIONS

SERIES	SIZE/SHAPE	TENON SIZE (BY OTHERS)	MOUNTING CONFIGURATION	FINISH OPTIONS	OPTIONS
TENON MOUNT					
VF1-TMHT VF1-TMVT VF1-HT	SQ = Square RD = Round	T238 = ø2-3/8" O.D. T278 = ø2-7/8" O.D. T3 = ø3" O.D.	S = Single D90 = Double @ 90° D180 = Double @ 180° T90 = Triple @ 90° T120¹ = Triple @ 120° Q90 = Quad @ 90°	BLK = Black DBZ = Dark bronze DBR = Medium bronze GRAY = Standard gray SLV = Satin aluminum WHT = White	CT = Center tenon
VF1-VT	SQ = Square RD = Round	T238 = ø2-3/8" O.D. T278 = ø2-7/8" O.D. T3 = ø3" O.D.			
DIRECT MOUNT					
VF1-DMVT VF1-DMHT	SQ = Square pole 3R = 3" round pole 4R = 4" round pole 5R = 5" round pole		S = Single D90 = Double @ 90° D180 = Double @ 180° T90 = Triple @ 90° T120¹ = Triple @ 120° Q90 = Quad @ 90°	BLK = Black DBZ = Dark bronze DBR = Medium bronze GRAY = Standard gray SLV = Satin aluminum WHT = White	
VF1-WMHT VF1-WMVT VF1-SM VF1-ST					

¹ For RD option only



LED

LOAD DATA

MODEL NUMBER	ARM LENGTH ¹	MOUNTING CONFIGURATION	EPA ²	WEIGHT
VF1-SM		-	0.04	0.41
VF1-ST	10"	-	0.75	3.48
VF1-DMHT-SQ VF1-DMHT-RD	8"	S D90 D180 T90 T120 Q90	0.42	2.33
VF1-DMVT-SQ VF1-DMVT-RD	10"	S D90 D180 T90 T120 Q90	0.51	2.39
VF1-WMHT	8"	-	0.61	3.51
VF1-WMVT	10"	-	0.71	3.58
VF1-TMHT-RD	8"	S D90 D180 T90 T120 Q90	1.02 1.36 1.36 1.69 1.64 2.02	7.67 9.79 9.79 11.91 11.91 14.03
VF1-TMVT-RD	10"	S D90 D180 T90 T120 Q90	1.11 1.54 1.55 1.96 1.90 2.65	7.35 9.15 9.15 10.95 10.95 12.75
VF1-TMHT-SQ	8"	S D90 D180 T90 Q90	1.17 1.44 1.45 1.58 1.82	9.34 11.48 11.48 13.68 15.76
VF1-TMVT-SQ	10"	S D90 D180 T90 Q90	1.27 1.58 1.69 2.00 2.33	9.06 10.86 10.86 12.66 14.46
VF1-VT-RD	-	-	0.69	5.89
VF1-VT-SQ	-	-	0.83	7.47
VF1-HT-RD	-	S D90 D180 T90 T120 Q90	0.69	5.77 6.25 6.25 6.73 6.73 7.21
VF1-HT-SQ	-	S D90 D180 T90 Q90	0.83	7.42 7.64 7.64 7.86 8.08

¹ Maximum arm length cannot exceed 28.188" long in any configuration.

² EPA is calculated for mounting accessories only.