

STATIC LED TROFFER

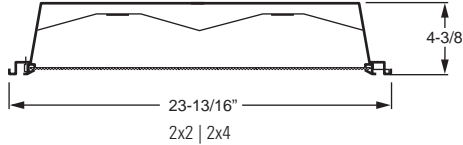
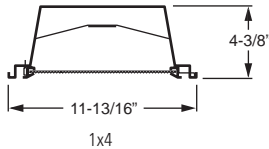
50 STATIC

CATALOG #:	TYPE:	LED
PROJECT:	NOTES:	

EXAMPLE **50 G - S 2 4 - L130/840 - S - AF12125 - OPTIONS - DIM - UNV**

SERIES CEILING TYPE FIX. STYLE NOM. W. NOM. L. LUMEN PACKAGE CRI & CCT DOOR FRAME SHIELDING OPTIONS/ACCESSORIES DRIVER VOLTAGE

CROSS SECTIONS



ORDERING INFORMATION

SERIES
50 Static LED Troffer (no air handling)

CEILING TYPE
G NEMA Type "G"
F NEMA Type "F"

FIXTURE STYLE
S Full door frame—no reveal

NOMINAL WIDTH
1 1' (4' length only)
2 2'

NOMINAL LENGTH
2 2' (2' width only)
4 4'

LED PACKAGE

EXAMPLE: L130/840				
LUMEN PACKAGE	NOMINAL LUMENS	MINIMUM CRI & CCT	WATTAGE	
1x4				
L27	2,700	827 = 82 CRI, 2700K 830 = 80 CRI, 3000K 835 = 80 CRI, 3500K 840 = 80 CRI, 4000K 850 = 80 CRI, 5000K	21	
L45	4,500		34	
L65	6,500		55	
2x2				
L26	2,600		21	
L43	4,300		34	
L65	6,500	56		
2x4				
L33	3,300	26		
L59	5,900	48		
L90	9,000	72		
L130	13,000	103		

Nominal lumen output based on 3500 CCT. Actual lumens may vary +/-5%, see fixture performance table. Additional LED lumen packages available, see options.

DOOR FRAME
S White flat steel
F White flat aluminum
R White regressed aluminum
SB Black flat steel
FB Black flat aluminum
RB Black regressed aluminum

SHIELDING
AF12125 Frosted acrylic, pattern #12, .125" thick
AF19156 Frosted acrylic, pattern #19, .156" thick
A12125 Clear acrylic, pattern #12, .125" thick
A19156 Clear acrylic, pattern #19, .156" thick
PC12187 Polycarbonate, pattern #12, .187" thick

OPTIONS
For color options, visit the 50 LED online at hew.com.
For flexible whip options, see [Technical Info](#).
EM/10W 10-watt emergency battery (120-277V only)
DG Double gasket (flat aluminum door only)
TG Triple gasket (flat aluminum door only; field installed)
EQCLIPS (L__) Earthquake clips (4 per fixture). Additional lower lumen packages available. Specify in increments of 100 nominal lumens. Option must be specified with next higher lumen package.
Example: 8,500 nominal lumens = 50G-S24-L90/850-(L85).
WET UL/CUL listed for wet location under covered ceiling (flat aluminum door only, TG option included).
CP Chicago Plenum (CCEA)

DRIVER
Additional dimming drivers available, see [Technical Info](#).
DRV Driver prewired for non-dimming applications
DIM 10% dimming driver prewired for 0-10V low voltage applications

VOLTAGE
120 120V
277 277V
UNV 120-277V
347 347V (not available with EM drivers)

FEATURES

- ▶ Frosted prismatic lens provides pleasing diffused light without LED pixelation.
- ▶ Multiple dimming protocols available.
- ▶ Fully-enclosed spring-loaded cam latches allow years of hassle-free maintenance.
- ▶ T-slot steel hinge ensures positive retention when door is opened.
- ▶ Back reinforcement ribs provide added strength.
- ▶ Rolled-edge channel adds superior strength.
- ▶ Integral T-bar clips quickly secure fixture to structure. (2x2 and 2x4 only)
- ▶ Rated for direct contact with insulation.
- ▶ Fully gasketed door minimizes contaminants.
- ▶ This fixture is proudly made in the USA.



LED

SPECIFICATIONS

Housing – 22-gauge die-formed C.R.S.
Door Frame – 20-gauge C.R.S. or .050" extruded aluminum, flat or regress, with mitered corners. T-slot steel hinge allows reversible hinging and latching. Fully enclosed spring-loaded cam latches.

Shielding – Frosted acrylic, pattern #12, .125" thick.

Finish – 92% minimum average reflective white polyester powder coat bonded to phosphate-free, multi-stage pretreated metal. All parts painted after fabrication to facilitate installation, increase efficiency, and inhibit corrosion.

Electrical – High quality mid-power LED board. L70 at 50,000 hours. 25°C maximum ambient operating temperature.

Mounting – NEMA Type "G" standard. NEMA Type "F" available.

Listings –

- cETLus conforms to UL STD 1598. Certified to CAN/CSA STD C22.2 No. 250.0. Suitable for damp locations
- DesignLights Consortium qualified product. Not all versions of this product may be DLC qualified, see the DLC Qualified Products List at www.designlights.org/QPL
- IC-rated for direct contact with insulation
- City of Chicago Environmental Air approved when specified with CP option

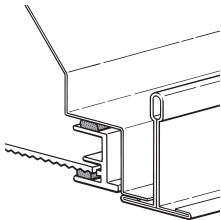
Warranty – 5-year limited warranty, see hew.com/warranty.

IMPORTANT:

Electrostatic sensitive unit. Observe precautions when handling.

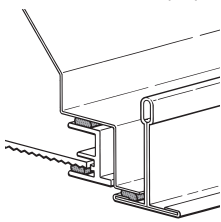
GASKETING DETAILS

DOUBLE GASKETING (DG)



Gasketing is factory-installed continuously between door frame and luminaire housing; and between door frame and lens.

TRIPLE GASKETING (TG)



Gasketing is factory-installed continuously between door frame and luminaire housing; and between door frame and lens. Gasketing between bottom perimeter of unit (adjacent to T-bar or hardpan ceiling) is provided by factory and field installed.

FIXTURE PERFORMANCE DATA

LED PACKAGE	DELIVERED LUMENS	WATTAGE	EFFICACY (lm/W)
1x4			
L27	2662	21.4	124.6
L45	4425	33.7	131.3
L65	6526	54.6	119.5
2x2			
L26	2602	21.4	121.8
L43	4325	33.7	128.3
L65	6527	56.1	116.4
2x4			
L33	3272	26.3	124.6
L59	5884	48.4	121.5
L90	9045	72.4	124.9
L130	13171	102.7	128.3

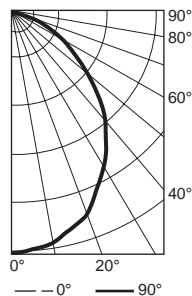
- Photometrics tested in accordance with IESNA LM-79. Results shown are based on 25°C ambient temperature.
- Wattage shown is average for 120V through 277V input.
- Results based on 3500K, 80 CRI, actual lumens may vary +/-5%
- Use multiplier table to calculate additional options.

MULTIPLIER TABLE

COLOR TEMPERATURE	
CCT/CRI	CONVERSION FACTOR
2700K/80CRI	0.97
3000K/80CRI	0.99
3500K/80CRI	1.00
4000K/80CRI	1.03
5000K/80CRI	1.06

PHOTOMETRY

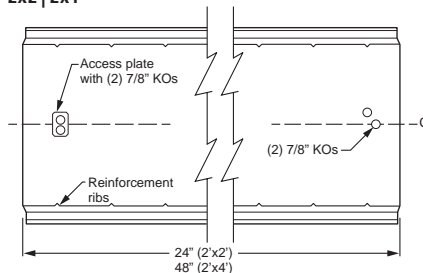
50G-S24-L130/835-SAF12125-DIM-UNV Total Luminaire Output: 13171 lumens; 103 Watts | Efficacy: 128 lm/W | 83.8 CRI; 4012K CCT



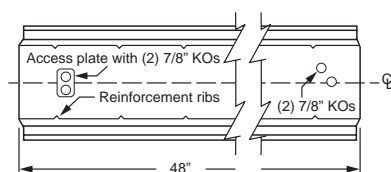
FIXTURE DETAILS

BACK VIEW

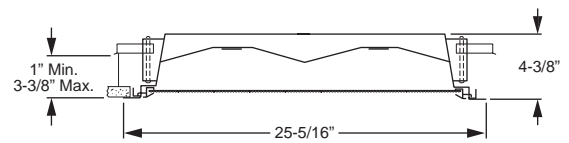
2x2 | 2x4



1x4

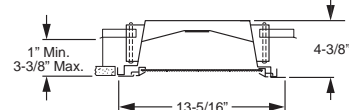


NEMA TYPE "F" INSTALLATION



Note: Maximum recommended ceiling opening is 24-3/8" x 24-38" for 2'x2' and 24-3/8" x 48-3/8" for 2'x4'. For continuous row mounting, add 49-5/16" for each additional fixture to obtain ceiling opening. 1-5/16" between end plates.

NEMA TYPE "F" INSTALLATION



Note: Maximum recommended ceiling opening is 12-3/8" x 48-3/8". For continuous row mounting, add 49-5/16" for each additional fixture to obtain ceiling opening. 1-5/16" between end plates.