

SOLID FRONT UNDER CABINET LIGHT

1SF

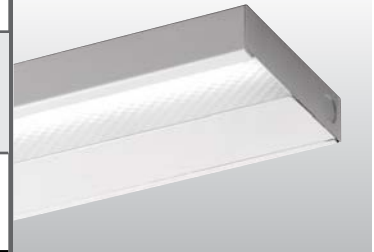
LED

CATALOG #: _____ TYPE: _____

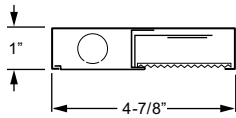
PROJECT: _____ NOTES: _____

EXAMPLE **1SF - 4 - L24/835 - AF12125 - OPTIONS - DRV - UNV**

SERIES NOMINAL LENGTH LUMEN PACKAGE CRI & CCT SHIELDING OPTIONS DRIVER VOLTAGE



CROSS SECTION



ORDERING INFORMATION

SERIES
1SF Solid Front Under Cabinet Light

NOMINAL LENGTH

1	1'
2	2'
3	3'
4	4'

LED PACKAGE

EXAMPLE: L24/840			AVERAGE SYSTEM WATTAGE
LUMEN PACKAGE	NOMINAL LUMENS	MINIMUM CRI & CCT	
1'			
L6	600	830 = 82 CRI, 3000K 835 = 82 CRI, 3500K 840 = 82 CRI, 4000K	8
2'			
L12	1,200		14
3'			
L18	1,800		21
4'			
L24	2,400		29

Nominal lumen output based on 3500 CCT. Actual lumens may vary +/-5%, see individual photometric reports.

SHIELDING

DMA Diffuse matte acrylic, .080" thick
AF12125 Frosted acrylic, pattern #12, .125" thick

OPTIONS

Not available with EM option.
 See back for details.

GCO Grounded convenience outlet (120V only; not available with 1' fixture; cannot be used with occupancy sensor in 2' fixture)

C&P/120 6-1/2' cord and plug, NEMA 5-15P (120V only)

WRS/120 White rocker switch (120V only; not available with 1' fixture)

AMW Anti-microbial white finish

OCCUPANCY SENSOR
 Factory-installed, passive infrared sensor (120V or 277V only).
OCCLV OSF10-10W Occupancy sensor (not available with 1' fixture)

DRIVER

DRV Driver prewired for non-dimming applications
DIM Dimming driver prewired for 0-10V low voltage applications

VOLTAGE

120 120V
277 277V
UNV 120-277V

FEATURES

- ▶ Small profile allows inconspicuous placement in confined spaces.
- ▶ Provides uniform, glare-free task lighting.
- ▶ Housing keyhole slots and knockouts provide quick and easy installation.
- ▶ Individual or continuous row mounting.
- ▶ All-welded construction provides long lasting performance.
- ▶ Optional anti-microbial white finish available for use in healthcare applications.
- ▶ This fixture is proudly made in the USA.



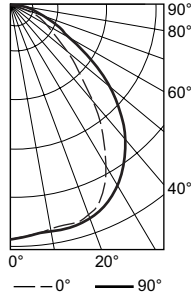
SPECIFICATIONS

Housing – 20-gauge die-formed, welded C.R.S.
Shielding – Diffuse matte acrylic, .080" thick
Finish – 92% minimum average reflective white polyester powder coat bonded to phosphate-free, multi-stage pretreated metal. All parts painted after fabrication to facilitate installation, increase efficiency, and inhibit corrosion.
Electrical – High quality mid-power LED board(s). L85 at 50,000 hours. 25°C maximum ambient operating temperature.
Mounting – Surface.
Labels – cCSAus certified as luminaire suitable for dry or damp locations.
Warranty – 5-year limited warranty, see hew.com/warranty.

IMPORTANT:
 Electrostatic sensitive unit. Observe precautions when handling.

PHOTOMETRY

TEST REPORT INFORMATION
 ▶ Date: 08/07/14
 ▶ Lamp Type: LED
 ▶ **Rated Lumens: 2424**
 ▶ **Watts: 29**
 ▶ **Lumens Per Watt: 83.6**
 ▶ **CRI: 82**
 ▶ **CCT: 3500K**



CANDLEPOWER DISTRIBUTION

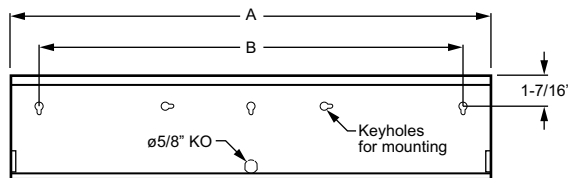
Vertical Angle	Horizontal Angle			Zonal Lumens
	0°	45°	90°	
0°	1079.	1079.	1079.	101.8
10°	1047.	1051.	1062.	101.8
20°	1034.	1045.	1051.	297.3
30°	876.	935.	978.	457.5
40°	590.	712.	821.	515.4
50°	341.	454.	599.	453.2
60°	184.	232.	336.	318.3
70°	92.	103.	138.	176.9
80°	50.	50.	50.	84.3
90°	17.	18.	10.	35.8

LUMEN SUMMARY

Zone	Lumens	% Fixture
0° - 30°	857.	35.1
0° - 40°	1372.	56.2
0° - 60°	2144.	87.8
0° - 90°	2440.	100.0
Total Luminaire:		
0° - 180°	2440.	100.0
IES Spacing Criteria: End = 1.2 Diagonal = 1.3 Across = 1.3		

FIXTURE DETAILS

BACK VIEW



Back of housing provided with adequate keyhole slots and knockout for mounting and wiring.

NOMINAL LENGTH	DIMENSION	
	A	B
1'	12-1/8"	7-1/2"
2'	22-5/8"	20"
3'	34-3/8"	29"
4'	46-1/4"	38"

