

# NARROW LOW-PROFILE WRAP

# 17

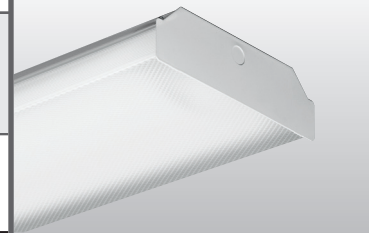
## LED

CATALOG #: \_\_\_\_\_ TYPE: \_\_\_\_\_

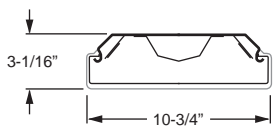
PROJECT: \_\_\_\_\_ NOTES: \_\_\_\_\_

**EXAMPLE** → **17** - **4** - **L55/835** - **AF** - **OPTIONS** - **DRV** - **UNV**

SERIES    NOMINAL LENGTH    LUMEN PACKAGE    CRI & CCT    SHIELDING    OPTIONS/ACCESSORIES    DRIVER    VOLTAGE



### CROSS SECTION



### ORDERING INFORMATION

**SERIES**  
17 Narrow Low-Profile Wrap

**NOMINAL LENGTH**

2	2'
4	4'
8	8'

### LED PACKAGE

EXAMPLE: L55/835			WATTAGE
LUMEN PACKAGE	NOMINAL LUMENS	MINIMUM CRI & CCT	
2'			
L27	2,700	830 = 82 CRI, 3000K 835 = 82 CRI, 3500K 840 = 82 CRI, 4000K	31
L55	5,500		53
L110	11,000		113

Nominal lumen output based on 3500 CCT. Actual lumens may vary +/-5%, see fixture performance data.

**SHIELDING**  
AF Frosted prismatic acrylic diffuser

**OPTIONS**  
See Technical Info for [mounting accessories](#).  
EM/10W 10-watt emergency battery (120V-277V only; not available on 2' unit)

**DRIVER**  
Additional dimming drivers available, see [Technical Info](#).  
DRV Driver prewired for non-dimming applications  
DIM 10% dimming driver prewired for 0-10V low voltage applications

**VOLTAGE**  
120 120V  
277 277V  
UNV 120-277V

### FEATURES

- ▶ Low-profile wrap-around provides uniform downward light distribution and subtle side illumination.
- ▶ Shallow depth provides sleek, low-profile appearance.
- ▶ Diffuser is secured continuously along luminaire sides.
- ▶ Mounts easily as a single fixture or in continuous row installations.
- ▶ Wireway is accessible without the use of tools.
- ▶ This fixture is proudly made in the USA.



## LED

### SPECIFICATIONS

**Housing** – 20-gauge die-formed C.R.S. End plates constructed of 19-gauge die-formed C.R.S.

**Shielding** – Frosted prismatic acrylic diffuser with 15% DR additive, .100" nominal thickness. Prismatic bottom/continuous wrap sides.

**Finish** – 92% minimum average reflective white polyester powder coat bonded to phosphate-free, multi-stage pretreated metal. All parts painted after fabrication to facilitate installation, increase efficiency, and inhibit corrosion.

**Electrical** – High quality mid-power LED boards. L70 >50,000 hours.

**Mounting** – Surface or suspended.

**Listings** –

- cCSAus certified as luminaire suitable for dry or damp locations.
- DesignLights Consortium qualified product. Not all versions of this product may be DLC qualified, see the DLC Qualified Products List at [www.designlights.org/QPL](http://www.designlights.org/QPL)

**Warranty** – 5-year limited warranty, see [www.hew.com/warranty](http://www.hew.com/warranty).

### IMPORTANT:

Electrostatic sensitive unit. Observe precautions when handling.

### FIXTURE PERFORMANCE DATA

LED PACKAGE	DELIVERED LUMENS	WATTAGE	EFFICACY (lm/W)
2'			
L27	2733	31.8	86.1
4'			
L55	5525	56.9	97.1
8'			
L110	11050	113.8	97.1

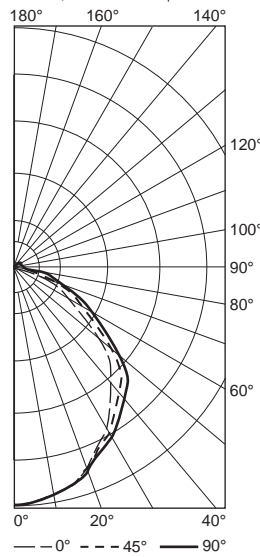
### MULTIPLIER TABLE

COLOR TEMPERATURE	
CCT/CRI	CONVERSION FACTOR
3000K/80CRI	0.99
3500K/80CRI	1.00
4000K/80CRI	1.03

- Photometrics tested in accordance with IESNA LM-79. Results shown are based on 25°C ambient temperature.
- Wattage shown is average for 120V through 277V input.
- Results based on 3500K, 80 CRI, actual lumens may vary +/-5%
- Use multiplier table to calculate additional options.

### PHOTOMETRY

**17-4-L55/835-AF-DRV-UNV** Report #: 19282.0; 03/23/16 | Total Luminaire Output: 5450 lumens; 53.0 Watts  
Efficacy: 102.8 lm/W | 85.3 CRI; 3538K CCT | IES Spacing Criteria: End: 1.2, Across: 1.2, Diagonal: 1.2

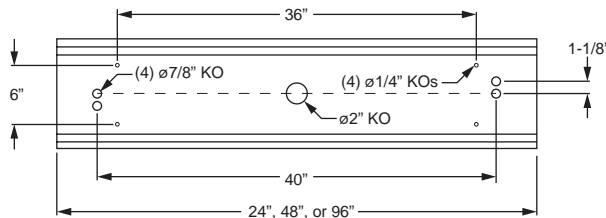


Vertical Angle	Horizontal Angle			Zonal Lumens
	0°	45°	90°	
0	1952	1952	1952	
5	1931	1931	1932	184.3
15	1847	1850	1854	524.5
25	1639	1658	1681	767.8
35	1392	1451	1508	911.4
45	1136	1262	1339	968.0
55	749	881	955	777.9
65	452	558	626	545.4
75	209	290	360	304.2
85	62	136	210	150.8
90	6	69	125	
95	0	65	113	66.7
105	3	61	88	56.5
115	8	61	88	54.3
125	15	55	79	46.0
135	19	48	61	35.0
145	26	46	56	27.7
155	25	38	45	17.3
165	27	33	36	9.3
175	30	31	31	2.9
180	27	27	27	

LUMEN SUMMARY	Zone	Lumens	% Fixture
	0 - 30	1477	27.1
0 - 40	2388	43.8	
0 - 60	4134	75.8	
0 - 90	5134	94.2	
90 - 120	178	3.3	
90 - 130	224	4.1	
90 - 150	286	5.3	
90 - 180	316	5.8	
0 - 180	5450	100.0	

### FIXTURE DETAILS

#### BACK VIEW



**Note:** Midsection punching for 4' and 8' units only.  
8' unit consists of duplicate 4' unit punching.