

LOW-PROFILE TROFFER

LPT

LED

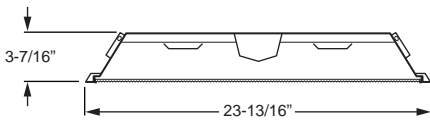
CATALOG #:	TYPE:
PROJECT:	NOTES:

EXAMPLE **LPT - 2 4 - L90/835 - S AF12095 - OPTIONS - DIM - UNV**

SERIES NOM. W. NOM. L. LUMEN PACKAGE CRI & CCT DOOR FRAME SHIELDING OPTIONS/ACCESSORIES DRIVER VOLTAGE



CROSS SECTION



ORDERING INFORMATION

SERIES
LPT Low-Profile Troffer

NOMINAL WIDTH
2 2'

NOMINAL LENGTH
2 2'
4 4'

LED PACKAGE

NOTE: Nominal lumens are based on AF12095 shielding.

EXAMPLE: L90/835			
LUMEN PACKAGE	NOMINAL LUMENS	MINIMUM CRI & CCT	WATTAGE
2x2			
L27	2700	827 = 82 CRI, 2700K 830 = 82 CRI, 3000K 835 = 82 CRI, 3500K	21
L45	4500		34
L54	5400		42
2x4			
L43	4300	840 = 82 CRI, 4000K 850 = 82 CRI, 5000K	31
L75	7500		61
L90	9000		67

Nominal lumen output based on 3500 CCT. Actual lumens may vary +/- 5%, see fixture performance data. Additional LED lumen packages available, see options.

DOOR FRAME
S White flat steel

SHIELDING
AF12095 Frosted acrylic, pattern #12, .095" thick
A12125 Clear acrylic, pattern #12, .125" thick (LED pixelation will be visible)
AF12125 Frosted acrylic, pattern #12, .125" thick
A19156 Clear acrylic, pattern #19, .156" thick (LED pixelation will be visible)
AF19156 Frosted acrylic, pattern #19, .156" thick

OPTIONS

For flexible whip options, see [Technical Info](#).

EM/10W Emergency LED battery (not available with 2'x2' fixtures)

EM/10W/BMTD Back-mounted 10-watt emergency LED battery, nominal, increases fixture height (required for 2'x2' fixtures). See back for details.

(L__) Additional lower lumen packages available. Specify in increments of 100 nominal lumens. Option must be specified with next higher lumen package.

Example: 8,000 nominal lumens = LPT-24-L90/835-SAF12095-(L80)

F338 6', 3/8" flex, 3-conductor, No. 18 AWG (DRV only)

F348 6', 3/8" flex, 4-conductor, No. 18 AWG (DRV only)

EQCLIPS Earthquake clips (4 per fixture)
CP Chicago Plenum (CCEA)

DRIVER

DRV Driver prewired for non-dimming applications

DIM 10% dimming driver prewired for 0-10V low voltage applications

SD40 40% step-dimming driver (must specify 120V or 277V)

VOLTAGE

120 120V

277 277V

UNV 120-277V

FEATURES

- ▶ 3-7/16" deep housing installs easily within limited plenum space.
- ▶ Gasketed door frame features offset mitered corners to eliminate light leaks.
- ▶ Cam latches close securely and allow hassle-free maintenance.
- ▶ Reversible door hinges and latches allow access on either side.
- ▶ Deep reinforcement ribs provide added strength.
- ▶ Integral T-bar clips quickly secure fixture to structure.
- ▶ This fixture is proudly made in the USA.



LED

SPECIFICATIONS

- Housing** – 22-gauge die-formed C.R.S.
- Door Frame** – 22-gauge C.R.S., offset mitered corners, cam latches, and T-style hinges.
- Shielding** – Frosted acrylic, pattern #12, .095" thick.
- Finish** – 92% minimum average reflective white polyester powder coat bonded to phosphate-free, multi-stage pretreated metal. All parts painted after fabrication to facilitate installation, increase efficiency, and inhibit corrosion.
- Electrical** – High quality mid-power LED boards. L85 at 50,000 hours. 25°C maximum ambient operating temperature.
- Mounting** – NEMA Type "G" standard. For flange installations use the Drywall Kit (DFK), ordered separately, see Information section.
- Listings** –
 - cCSAus certified as luminaire suitable for dry or damp locations.
 - DesignLights Consortium qualified product. Not all versions of this product may be DLC qualified, see the DLC Qualified Products List at www.designlights.org/QPL.
 - City of Chicago Environmental Air approved when specified with CP option.

Warranty – 5-year limited warranty, see hew.com/warranty.

IMPORTANT:

Electrostatic sensitive unit. Observe precautions when handling.

FIXTURE PERFORMANCE DATA

LED PACKAGE	LUMEN OUTPUT	WATTAGE (W)	EFFICACY (lm/W)
2x2			
L27	2662	21.4	124.4
L45	4425	33.7	131.3
L54	5376	42.4	126.8
2x4			
L43	4306	31.4	137.1
L75	7556	61.0	123.9
L90	9031	67.4	134.0

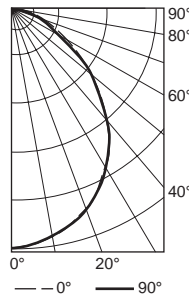
- Photometrics tested in accordance with IESNA LM-79. Results shown are based on 25°C ambient temperature.
- Wattage shown is average for 120V through 277V input.
- Results based on 3500K, 80 CRI, actual lumens may vary +/-5%
- Use multiplier table to calculate additional options.

MULTIPLIER TABLE

COLOR TEMPERATURE	
CCT/CRI	CONVERSION FACTOR
2700K/80CRI	0.97
3000K/80CRI	0.99
3500K/80CRI	1.00
4000K/80CRI	1.03
5000K/80CRI	1.06

PHOTOMETRY

LPT-24-L90/835-SAF12095-DIM Total Luminaire Output: 9031 lumens; 68 Watts | Efficacy: 133lm/W | 82 CRI; 3457K CCT

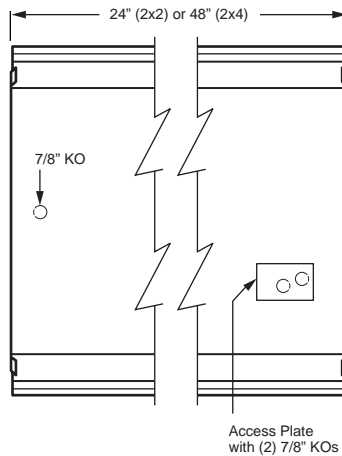


VERTICAL ANGLE	HORIZONTAL ANGLE			ZONAL LUMENS
	0°	45°	90°	
0	4131	4131	4131	
5	4070	4066	4066	386
15	3852	3852	3856	1089
25	3477	3477	3490	1597
35	2892	2892	2900	1798
45	2146	2115	2082	1629
55	1378	1304	1250	1186
65	788	716	718	744
75	398	378	428	433
85	152	154	186	168
90	0	0	0	

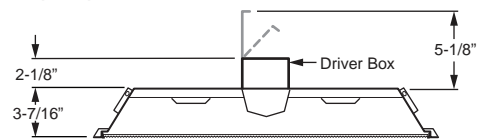
LUMEN SUMMARY	LUMEN SUMMARY		
	ZONE	LUMENS	% FIXTURE
	0 - 30	3072	34
	0 - 40	4870	54
	0 - 60	7685	85
	0 - 90	9031	100
	0 - 180	9031	100

FIXTURE DETAILS

BACK VIEW



EM/10W/BMTD DETAILS



2x2 configurations will require EM driver to be back mounted. Additional plenum depth is required for installation and servicing. Not available with NEMA Type "F" applications. Access required through adjacent tile in grid system.