

6" LED CYLINDER

LC6

LED

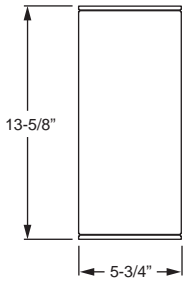
CATALOG #:	TYPE:
PROJECT:	NOTES:

EXAMPLE → **LC6** - **L40C/835** - **WHT** - **CS/M** - **OPTIONS** - **QM** - **DIM** - **UNV**

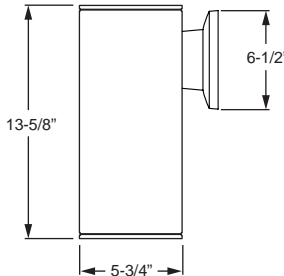
SERIES LUMEN PACKAGE CRI & CCT HOUSING FINISH REFLECT. DIST. COLOR OPTIONS MOUNTING DRIVER VOLTAGE



CROSS SECTIONS



L11C - L15C Shown
Max. Weight: 8 lbs



L11C - L15C Wall Mount Shown
Max. Weight: 8 lbs

ORDERING INFORMATION

SERIES

LC6 6" LED Cylinder

LED PACKAGE

Nominal lumens based on CS reflector color and W distribution.
See page 2 for fixture performance data.

EXAMPLE: L40C/835				
LUMEN PACKAGE	NOMINAL LUMENS	MINIMUM		AVERAGE SYSTEM WATTAGE
		CRI	CCT	
L11C	1000	8 = 80 9 = 90	27=2700K	15
L15C	1100		30=3000K	19
L20C	1500		35=3500K	26
L30C	2200		40=4000K	35
L40C	2800			39

HOUSING FINISH

For custom color options, visit the LC6 at hew.com.¹

ALUM Satin silver aluminum
BLK Textured black
BRZ Textured bronze
NKL Textured nickel
SLV Textured silver
WHT Textured white

REFLECTOR COLOR

CS Clear semi-specular (standard)
CG Champagne gold
GD Gold
PW Pewter
SG Satin-glow
SPC Clear specular
STR Straw
WT Wheat
WH Painted white reflector, textured

DISTRIBUTION ²

W 60° Wide
M 40° Medium
N 30° Narrow

OPTIONS

EM drivers not available.
See page 3 for cord options and mounting details.
LAD Acrylic luminous disk
LADO Acrylic luminous disk open
LAR Acrylic luminous ring

MOUNTING

See page 3 for cord options and mounting details.
QM Quick installation canopy surface mount
PM Pendant mount (specify length in 1" increments, minimum 4"), see back. Canopy and pendant match fixture housing color unless specified otherwise.
Example: 24" pendant = **PM24**.
SM Surface mount to octagonal J-box (not available with L40C lumen package)
WM Wall mount
HM Hub mounting, specify length of arm (2"-6"). Hub ordered separately, see page 4 for details.
Example: 3" arm = **HM03**
CM Adjustable aircraft cable mount, 24" length standard (48" and 96" lengths available). Canopy painted white unless specified otherwise. Must specify cord, see page 3.
Example: 24" cable = **CM24**

DRIVER

Additional dimming drivers available, see [Technical Info](#).
DRV Driver prewired for non-dimming applications
DIM 10% dimming driver prewired for 0-10V low voltage applications

VOLTAGE

120 120V
277 277V
UNV 120-277V

FEATURES

- ▶ Self-flanged aluminum reflector prevents light leaks and is available in assorted colors.
- ▶ Standard cylinder colors are bronze, black, white, or silver aluminum (must specify when ordering).
- ▶ Custom colors available.
- ▶ All-aluminum cylinder components dissipate heat for cooler operation.
- ▶ This fixture is proudly made in the USA.

¹ For custom colors other than RAL, manufacturers' code plus two swatches (minimum 1" square) required.

² Beam angle/distribution does not account for options/accessories such as accent cone with lens, acrylic accent rings, or alternate reflector finishes. Actual beam angle/distribution may vary. Consult factory with complete model number for approximate values.



LED

PHOTOMETRY

SPECIFICATIONS

Housing – Extruded aluminum.

Finish – Polyester powder coat bonded to phosphate-free, multi-stage pretreated metal. All parts painted after fabrication to facilitate installation, increase efficiency, and inhibit corrosion.

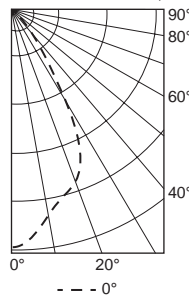
Electrical – High quality mid-power LED C.O.B. L70 >50,000 hours.

Mounting – Surface, cable, pendant, wall, or hub mount. Indoor applications only.

Labels – cETLus conforms to UL STD 1598 and UL STD 8750. Certified to CAN/CSA STD C22.2 No. 250.0. Suitable for damp locations.

Warranty – 5-year limited warranty, see hew.com/warranty.

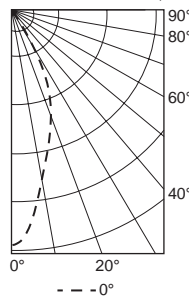
LC6-L40C/835-CS/W-DIM-120 Report #: 1217914; 03/09/16 | Total Luminaire Output: 2785 lumens; 39.3 Watts
Efficacy: 70.8 lm/W | 82.3 CRI; 3579K CCT | IES Spacing Criteria: 0-180 = 0.99; 90-270 = 0.99



CANDLEPOWER DISTRIBUTION	Vertical Angle	Horizontal Angle	Zonal Lumens
	0°	0°	
	0	3015	
	5	2895	70.6
	15	2509	305.2
	25	2196	485.7
	35	871	350.2
	45	268	136.5
	55	44	34.7
	65	5	3.9
	75	2	1.4
	85	1	0.6
	90	1	

LUMEN SUMMARY	Zone	Lumens	% Fixture
	0 - 40	2517	90.3
	0 - 60	2778	99.7
	0 - 90	2787	100.0
	0 - 180	2787	100.0

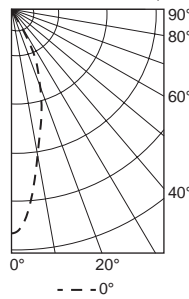
LC6-L40C/835-CS/M-DIM-120 Report #: 1217916; 03/09/16 | Total Luminaire Output: 2090 lumens; 39.3 Watts
Efficacy: 53.2 lm/W | 82.2 CRI; 3557K CCT | IES Spacing Criteria: 0-180 = 0.57; 90-270 = 0.57



CANDLEPOWER DISTRIBUTION	Vertical Angle	Horizontal Angle	Zonal Lumens
	0°	0°	
	0	4502	
	5	4064	102.4
	15	2618	342.5
	25	1558	383.8
	35	318	153.2
	45	56	34.2
	55	12	6.2
	65	6	3.5
	75	3	2.0
	85	1	0.6
	90	1	

LUMEN SUMMARY	Zone	Lumens	% Fixture
	0 - 40	1999	96.7
	0 - 60	2057	99.5
	0 - 90	2067	100.0
	0 - 180	2067	100.0

LC6-L40C/835-CS/N-DIM-120 Report #: 1217917; 03/02/16 | Total Luminaire Output: 1481 lumens; 39.3 Watts
Efficacy: 37.7 lm/W | 82.4 CRI; 3556K CCT | IES Spacing Criteria: 0-180 = 0.48; 90-270 = 0.48



CANDLEPOWER DISTRIBUTION	Vertical Angle	Horizontal Angle	Zonal Lumens
	0°	0°	
	0	3941	
	5	3497	89.1
	15	1984	266.5
	25	1039	258.3
	35	170	92.3
	45	20	17.4
	55	5	2.4
	65	2	1.4
	75	2	1.4
	85	2	0.6
	90	3	

LUMEN SUMMARY	Zone	Lumens	% Fixture
	0 - 40	1444	97.8
	0 - 60	1470	99.6
	0 - 90	1476	100
	0 - 180	1476	100.0

REFLECTOR FINISH MULTIPLIER		
CATALOG NUMBER	REFLECTOR FINISH	CONVERSION FACTOR
CS	Clear semi-specular	-
SPC	Specular	1.02
CG	Champagne Gold	0.96
GD	Gold	0.93
PW	Pewter	0.86
STR	Straw	0.97
WH	White, textured	0.90
WT	Wheat	0.88

COLOR TEMPERATURE MULTIPLIER	
CCT/CRI	CONVERSION FACTOR
2700K/80CRI	0.95
3000K/80CRI	0.96
3500K/80CRI	1.00
4000K/80CRI	1.01
2700K/90CRI	0.74
3000K/90CRI	0.85
3500K/90CRI	0.90
4000K/90CRI	0.91

FIXTURE PERFORMANCE DATA

LED PACKAGE	DISTRIBUTION	WATTAGE	DELIVERED LUMENS	EFFICACY (lm/W)
L11C	W	15	1026	66.8
	M		770	50.1
	N		546	35.5
L15C	W	19	1085	57.7
	M		814	43.3
	N		577	30.7
L20C	W	26	1471	56.1
	M		1104	42.1
	N		782	29.9
L30C	W	35	2195	63.0
	M		1647	47.3
	N		1167	33.5
L40C	W	39	2785	70.8
	M		2090	53.2
	N		1481	37.7

MOUNTING DETAILS

CABLE MOUNT (CM_)

- Cable mount fixtures are provided with:
- Adjustable length aircraft cable, must specify length in inches.
 - White cord, No. 18 AWG.
 - One 5" canopy.
 - T-bar clip with 1/4-20 stud.
 - Hard ceiling anchor provided by others.
 - See [instruction sheet](#) for more information.



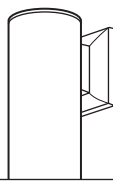
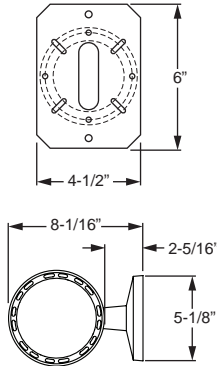
PENDANT MOUNT (PM_)

- Swivel pendant mount fixtures are provided with:
- Swivel canopy with 3/8" I.P.S. threaded stem (specify length of stem, 4" minimum, 24" default length)
 - T-bar clip with 1/4-20 stud.
 - Hard ceiling anchor provided by others.
 - See [instruction sheet](#) for more information.



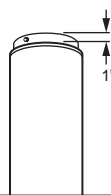
WALL MOUNT (WM)

Mounts to 4" maximum J-box. Includes wall mounting plate and cast cover.



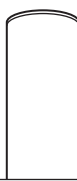
QUICK SURFACE MOUNT (QM)

Quick installation canopy surface mount to octagonal J-box



SURFACE MOUNT (SM)

Surface mount to octagonal J-box



FIXTURE DETAILS

CORD OPTIONS

Must specify cord when cable mounting.

EXAMPLE: S2438/W				
CORD TYPE	LENGTH	# OF CONDUCTORS	WIRE SIZE	COLOR
S = Straight	24 = 24"	3 = 3	8 = 18-gauge	/B = Black /W = White
	48 = 48"	4 = 4		
	96 = 96"	5 = 5		

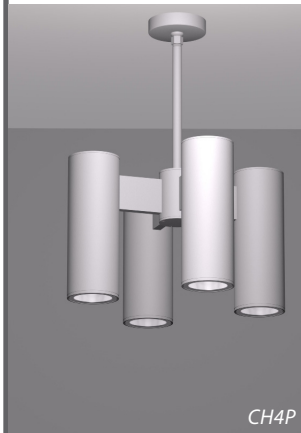
¹ For custom colors other than RAL, manufacturers' code plus two swatches (minimum 1" square) required.



LED

CYLINDER HUB CONFIGURATIONS

Fixtures ordered separately, must specify HM mounting option. Additional configurations available, consult factory.



ORDERING INFORMATION

EXAMPLE → **CH3P - PM24 - OPTIONS - WHT**

HUB STYLE	MOUNTING	OPTIONS	FINISH
-----------	----------	---------	--------

HUB STYLE

Fixtures ordered separately, specify HM option. Additional configurations available, consult factory:

- CH3H** 3 cylinder helical hub, 4" pitch
- CH3P** 3 cylinder planar hub
- CH4H** 4 cylinder helical hub, 3" pitch
- CH4P** 4 cylinder planar hub
- CH4S** 4 cylinder stagger hub, 8" pitch

MOUNTING

- PM__** Pendant mount with 3/4" stem and 15° swivel canopy (specify stem length in 1" increments, 24" minimum)
Example: 24" pendant stem = **PM24**.

OPTIONS

- CPM** Center cylinder hub mounting (cylinder ordered separately, LC6 or LC7 only)

FINISH

For custom color options, visit the LC6 at hew.com.¹

- ALUM** Satin silver aluminum
- BLK** Textured black
- BRZ** Textured bronze
- NKL** Textured nickel
- SLV** Textured silver
- WHT** Textured white

¹ For custom colors other than RAL, manufacturers' code plus two swatches (minimum 1" square) required.