

7.5" LED CYLINDER

LC7

LED

CATALOG #: _____ TYPE: _____

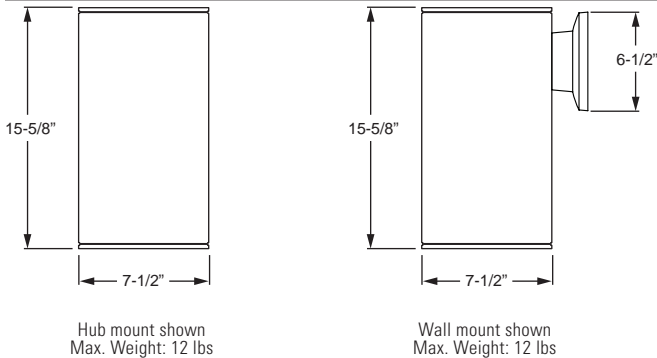
PROJECT: _____ NOTES: _____

EXAMPLE → **LC7 - L40C/835 - WHT - CS/M - OPTIONS - QM - DIM - UNV**

SERIES LUMEN PACKAGE CRI & CCT HOUSING FINISH REFLECT. DIST. COLOR OPTIONS MOUNTING DRIVER VOLTAGE



CROSS SECTION



ORDERING INFORMATION

SERIES
LC7 7.5" LED Cylinder

LED PACKAGE

NOTE: Nominal lumens are based on CS reflector color and W distribution. See page 2 for fixture performance data.

EXAMPLE: L40C/835				
LUMEN PACKAGE	NOMINAL LUMENS	MINIMUM		WATTAGE
		CRI	CCT	
L11C	1000	8 = 80 9 = 90	27=2700K 30=3000K 35=3500K 40=4000K	15
L15C	1300			19
L20C	1700			26
L30C	2500			36
L40C	3000			39
L50C	3600			51
L60C	4500			64
L70C	5400			62
L80C	5800			72
L90C	5900			80

HOUSING FINISH

For custom color options, visit the LC7 at hew.com.¹

ALUM Satin silver aluminum
BLK Textured black
BRZ Textured bronze
NKL Textured nickel
SLV Textured silver
WHT Textured white

REFLECTOR COLOR

CS Clear semi-specular (standard)
CG Champagne gold
GD Gold
PW Pewter
SG Satin-glow
SPC Clear specular
STR Straw
WT Wheat
WH Painted white reflector, textured

DISTRIBUTION ²

W 75° Wide
M 50° Medium

OPTIONS

EM battery not available.
 See back for cord options and mounting details.
LAD Acrylic luminous disk
LADO Acrylic luminous disk open
LAR Acrylic luminous ring

MOUNTING

See back for cord options and mounting details.
QM Quick installation canopy surface mount
PM____ Pendant mount (specify length in 1" increments, minimum 4"), see back. Canopy and pendant match fixture housing color unless specified otherwise.
Example: 24" pendant = **PM24**.
SM Surface mount to octagonal J-box
WM Wall mount
CM____ Adjustable aircraft cable mount, 24" length standard (48" and 96" lengths available). Canopy painted white unless specified otherwise. Must specify cord, see page 3.
Example: 24" cable = **CM24**
HM____ Hub mounting, specify length of arm (2"-6"). Hub ordered separately, see page 3 for details.
Example: 3" arm = **HM03**

DRIVER

Additional dimming drivers available, see [Technical Info](#).
DRV Driver prewired for non-dimming applications
DIM 10% dimming driver prewired for 0-10V low voltage applications

VOLTAGE

120 120V
277 277V
UNV 120-277V

FEATURES

- ▶ Self-flanged aluminum reflector prevents light leaks and is available in assorted colors.
- ▶ Standard cylinder colors are bronze, black, white, or silver aluminum (must specify when ordering).
- ▶ Custom colors available.
- ▶ All-aluminum cylinder components dissipate heat for cooler operation.
- ▶ This fixture is proudly made in the USA.



¹ For custom colors other than RAL, manufacturers' code plus two swatches (minimum 1" square) required.
² Beam angle/distribution does not account for options/accessories such as accent cone with lens, acrylic accent rings, or alternate reflector finishes. Actual beam angle/distribution may vary. Consult factory with complete model number for approximate values.

LED

PHOTOMETRY

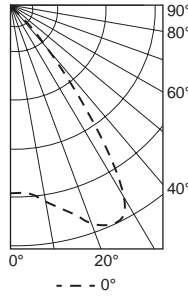
SPECIFICATIONS

Housing – Extruded aluminum.
Finish – Polyester powder coat bonded to phosphate-free, multi-stage pretreated metal. All parts painted after fabrication to facilitate installation, increase efficiency, and inhibit corrosion.
Electrical – High quality mid-power LED C.O.B. L70 >50,000 hours.
Mounting – Surface, cable, pendant, wall, or hub mount. Indoor applications only.
Labels – cETLus conforms to UL STD 1598 and UL STD 8750. Certified to CAN/CSA STD C22.2 No. 250.0. Suitable for damp locations.
Warranty – 5-year limited warranty, see hew.com/warranty.

REFLECTOR FINISH MULTIPLIER		
CATALOG NUMBER	REFLECTOR FINISH	CONVERSION FACTOR
CS	Clear semi-specular	-
SPC	Specular	1.02
CG	Champagne Gold	0.96
GD	Gold	0.93
PW	Pewter	0.86
STR	Straw	0.97
WH	White, textured	0.90
WT	Wheat	0.88

COLOR TEMPERATURE MULTIPLIER	
CCT/CRI	CONVERSION FACTOR
2700K/80CRI	0.95
3000K/80CRI	0.96
3500K/80CRI	1.00
4000K/80CRI	1.01
2700K/90CRI	0.74
3000K/90CRI	0.85
3500K/90CRI	0.90
4000K/90CRI	0.91

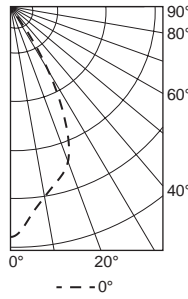
LC7-L40C/835-CS/W-DIM-120 Report #: 1217929; 03/03/16 | Total Luminaire Output: 2953 lumens; 39.2 Watts
 Efficacy: 75.4 lm/W | 82.1 CRI; 3558K CCT | IES Spacing Criteria: 0-180 = 1.33; 90-270 = 1.33



CANDLEPOWER DISTRIBUTION	Vertical Angle	Horizontal Angle	Zonal Lumens
		45°	
	0	1804	
	5	1811	43.2
	15	2045	235.5
	25	2311	479.4
	35	1320	512.6
	45	287	158.8
	55	38	30.0
	65	14	8.1
	75	6	3.9
	85	3	2.2
	90	3	

LUMEN SUMMARY	Zone	Lumens	% Fixture
	0 - 40	2638	89.7
	0 - 60	2917	99.2
	0 - 90	2942	100.0
	0 - 180	2942	100.0

LC7-L40C/835-CS/M-DIM-120 Report #: 1217931; 03/04/16 | Total Luminaire Output: 2791 lumens; 39.3 Watts
 Efficacy: 71.1 lm/W | 82.2 CRI; 3562K CCT | IES Spacing Criteria: 0-180 = 0.84; 90-270 = 0.84



CANDLEPOWER DISTRIBUTION	Vertical Angle	Horizontal Angle	Zonal Lumens
		45°	
	0	4296	
	5	3954	98.3
	15	3347	410.1
	25	2400	579.9
	35	555	290.5
	45	70	45.6
	55	5	4.7
	65	2	1.3
	75	0	0.3
	85	1	0.6
	90	1	

LUMEN SUMMARY	Zone	Lumens	% Fixture
	0 - 40	2783	97.6
	0 - 60	2848	99.9
	0 - 90	2852	100.0
	0 - 180	2852	100.0

FIXTURE PERFORMANCE DATA

LED PACKAGE	DISTRIBUTION	WATTAGE	DELIVERED LUMENS	EFFICACY (lm/W)
L11C	W	15	1043	69
	M		986	65
L15C	W	19	1347	71
	M		1273	67
L20C	W	26	1680	64
	M		1588	61
L30C	W	36	2487	70
	M		2351	66
L40C	W	39	2953	75
	M		2791	71
L50C	W	51	3566	70
	M		3370	66
L60C	W	64	4448	69
	M		4204	66
L70C	W	62	5400	87
	M		5104	82
L80C	W	72	5773	81
	M		5456	76
L90C	W	80	5940	74
	M		5614	70



MOUNTING DETAILS

CABLE MOUNT (CM_)

Cable mount fixtures are provided with:

- Adjustable length aircraft cable, must specify length in inches.
- White cord, No. 18 AWG.
- One 5" canopy.
- T-bar clip with 1/4-20 stud.
- Hard ceiling anchor provided by others.
- See [instruction sheet](#) for more information.



PENDANT MOUNT (PM_)

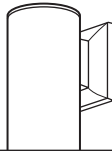
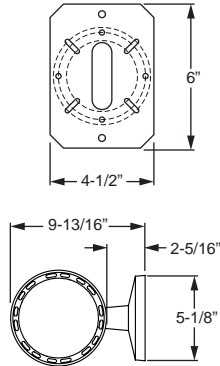
Swivel pendant mount fixtures are provided with:

- Swivel canopy with 3/8" I.P.S. threaded stem (specify length of stem, 4" minimum, 24" default length)
- T-bar clip with 1/4-20 stud.
- Hard ceiling anchor provided by others.
- See [instruction sheet](#) for more information.



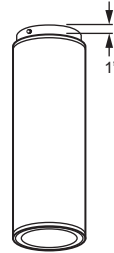
WALL MOUNT (WM)

Mounts to 4" maximum J-box. Includes wall mounting plate and cast cover.



QUICK SURFACE MOUNT (QM)

Quick installation canopy surface mount to octagonal J-box



SURFACE MOUNT (SM)

Surface mount to octagonal J-box



FIXTURE DETAILS

CORD OPTIONS

Must specify cord when cable mounting.

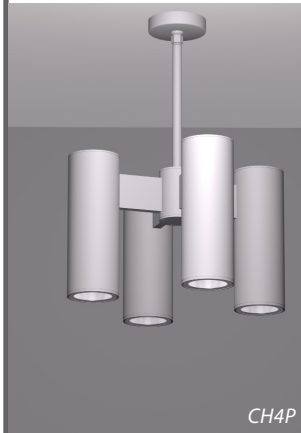
EXAMPLE: S2438/W

CORD TYPE	LENGTH	# OF CONDUCTORS	WIRE SIZE	COLOR
S = Straight	24 = 24"	3 = 3	8 = 18-gauge	/B = Black /W = White
	48 = 48"	4 = 4		
	96 = 96"	5 = 5		



CYLINDER HUB CONFIGURATIONS

Fixtures ordered separately, must specify HM mounting option. Additional configurations available, consult factory.



ORDERING INFORMATION

EXAMPLE → **CH3P - PM24 - OPTIONS - WHT**

HUB STYLE	MOUNTING	OPTIONS	FINISH
-----------	----------	---------	--------

HUB STYLE

Fixtures ordered separately, specify HM option. Additional configurations available, consult factory:

- CH3H** 3 cylinder helical hub, 4" pitch
- CH3P** 3 cylinder planar hub
- CH4H** 4 cylinder helical hub, 3" pitch
- CH4P** 4 cylinder planar hub
- CH4S** 4 cylinder stagger hub, 8" pitch

MOUNTING

- PM__** Pendant mount with 3/4" stem and 15° swivel canopy (specify stem length in 1" increments, 24" minimum)
Example: 24" pendant stem = **PM24**.

OPTIONS

- CPM** Center cylinder hub mounting (cylinder ordered separately)

FINISH

For custom color options, visit the LC7 a hew.com.¹

- ALUM** Satin silver aluminum
- BLK** Textured black
- BRZ** Textured bronze
- NKL** Textured nickel
- SLV** Textured silver
- WHT** Textured white

¹ For custom colors other than RAL, manufacturers' code plus two swatches (minimum 1" square) required.