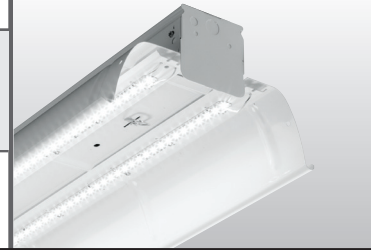


CATALOG #: _____ TYPE: _____

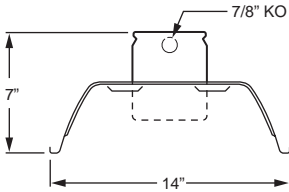
PROJECT: _____ NOTES: _____



EXAMPLE → **82 - 4 - L107/840 - OPTIONS - DIM - UNV**

SERIES NOMINAL LENGTH LUMEN PACKAGE CRI & CCT OPTIONS/ACCESSORIES DRIVER VOLTAGE

CROSS SECTION



ORDERING INFORMATION

SERIES
82 Premium Industrial

NOMINAL LENGTH
4 4'
8 8'

LED PACKAGE

EXAMPLE: L107/840			AVERAGE SYSTEM WATTAGE
LUMEN PACKAGE	NOMINAL LUMENS	MINIMUM CRI & CCT	
4'			
L64	6,400	835 = 82 CRI, 3500K 840 = 82 CRI, 4000K	52
L107	10,700		87
8'			
L128	12,800	850 = 82 CRI, 5000K	105
L214	21,400		174

Nominal lumens based on 3500K CCT, actual lumens may vary. Additional LED lumen packages available, consult factory.

OPTIONS

EM/10W (L__) 10-watt emergency driver (120V-277V only)
Additional lower lumen packages available. Specify in increments of 100 nominal lumens. Option must be specified with next *higher* lumen package.
Example: 9,500 nominal lumens = 82-4-L107/840-(L95)

ACCESSORIES

See back for mounting and accessory details.

WG-8211 11-gauge white powder coat wireguard
WG-8214 14-gauge white powder coat wireguard
RA-82 Steel reflector row aligner (1 pair)
MSA Myers sway adapter
T-2 Tong hanger
325 1-1/2" ceiling spacer
GAT GAT fastener (T-bar clip)
VBY (2) Y-hangers
VBV-2 (2) Y-hangers and (2) 2' chains

DRIVER

Additional dimming drivers available, see [Technical Info](#).

DRV Driver prewired for non-dimming applications
DIM 10% dimming driver prewired for 0-10V low voltage applications

VOLTAGE

120 120V
277 277V
UNV 120-277V
480 480V with stepdown transformer (not available with EM option)

FEATURES

- ▶ Two heavy-duty, spring-loaded quarter-turn fasteners secure reflector to housing.
- ▶ Channel connector and clear polycarbonate reflector aligners furnished for continuous row applications (8' unit only).
- ▶ LED technology provides high efficacy and energy efficiency.
- ▶ Rated for 50,000 hours at 85% lumen maintenance (L85).
- ▶ Minimum 82 CRI; 4000K or 5000K CCT.
- ▶ This fixture is proudly made in the USA.



LED

Catalog #: 82-4-L107/840-DRV-UNV

SPECIFICATIONS

Housing – 20-gauge die-formed, ribbed C.R.S.
Reflector – 22-gauge die-formed, ribbed C.R.S.

Finish – 92% minimum average reflective white polyester powder coat bonded to phosphate-free, multi-stage pretreated metal. All parts painted after fabrication to facilitate installation, increase efficiency, and inhibit corrosion.

Electrical – High quality mid-power LED boards. L85 at 50,000 hours. 45°C maximum ambient operating temperature.

Mounting – Surface or suspended.

Listings –

- cCSAus certified as luminaire suitable for dry or damp locations.
- DesignLights Consortium qualified product. Not all versions of this product may be DLC qualified, see the DLC Qualified Products List at www.designlights.org/QPL

Warranty – 5-year limited warranty, see hew.com/warranty.

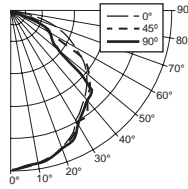
IMPORTANT:

Electrostatic sensitive unit. Observe precautions when handling.

LED PHOTOMETRY

TEST REPORT INFORMATION

- ▶ Test Report #: 18636.0
- ▶ Date: 01/22/15
- ▶ Lamp Type: LED
- ▶ **Rated Lumens: 10730**
- ▶ **Watts: 87.0**
- ▶ **Lumens Per Watt: 123.3**
- ▶ **CRI: 82**
- ▶ **CCT: 3956K**



CANDLEPOWER DISTRIBUTION

Vertical Angle	Horizontal Angle			Zonal Lumens
	0°	45°	90°	
0°	4054.	4054.	4054.	
5°	3971.	3968.	3964.	378.6
15°	3845.	3851.	3860.	1091.8
25°	3541.	3567.	3646.	1660.0
35°	3071.	3288.	3144.	1982.6
45°	2731.	2807.	2853.	2169.6
55°	2191.	2284.	1275.	1691.4
65°	1557.	961.	982.	1186.6
75°	820.	377.	220.	438.7
85°	176.	119.	88.	130.2
90°	0.	0.	0.	

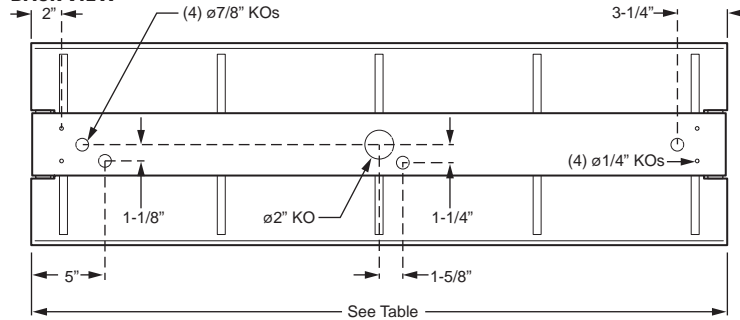
LUMEN SUMMARY

Zone	Lumens	% Fixture
0° - 30°	3130.	29.2
0° - 40°	5113.	47.7
0° - 60°	8974.	83.6
0° - 90°	10730.	100.0
Total Luminaire:		
0° - 180°	10730.	100.0

IES Spacing Criteria: End = 1.2
 Across = 1.2
 Diagonal = 1.2

FIXTURE DETAILS

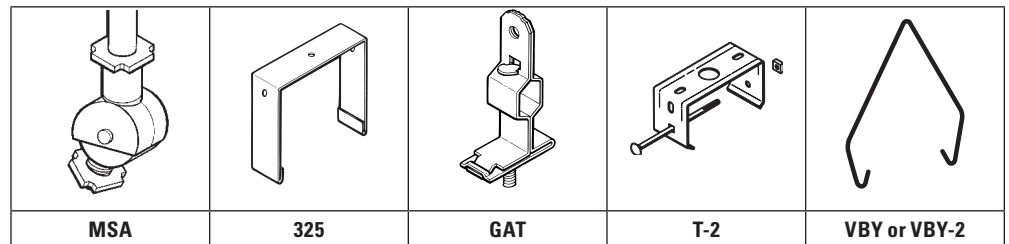
BACK VIEW



Nominal Size	Unit Length
4'	48"
8'	96"

Note: 8' fixture uses (2) 4' reflectors

MOUNTING OPTIONS



ACCESSORIES

