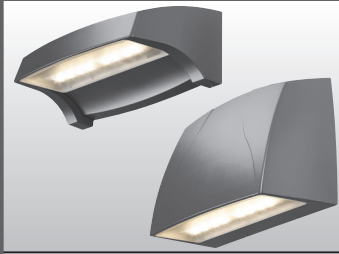


VOLTAIRE ARCHITECTURAL WALL PACK

VWP

LED



FEATURES

GENERAL

- ▶ Engineered with the highest quality materials to ensure reliability, performance, and quality.
- ▶ Provides security and accent lighting for walkways, entries, perimeters, and facades.
- ▶ Intended for use in both uplight and downlight applications.
- ▶ Aesthetically designed horizontal and vertical housings blend seamlessly with a variety of architectural styles.
- ▶ Purposefully modeled to allow runoff of dirt and water for an always-clean appearance.
- ▶ Architectural housing extension option can be used with or without EM to maintain aesthetics throughout an entire project
- ▶ Optional energy-saving photocell/occupancy sensor available.
- ▶ Rated >50,000 hours at 70% lumen maintenance (L70).
- ▶ ANSI 3000K, 4000K or 5000K CCT; minimum 70 CRI.
- ▶ Available in six standard finish options.
- ▶ This fixture is proudly made in the USA.

THERMAL

- ▶ Integral die-cast aluminum heatsink provides optimal passive thermal management.
- ▶ Concealed heatsink design preserves architectural appearance.
- ▶ Rated for -30°C to 40°C ambient operating temperature (-20°C to 40°C with EM/10WC; 0°C to 39°C with EM/4W).

OPTICAL

- ▶ Acrylic precision optics produce standard IES distributions.
- ▶ Full cutoff, dark-sky compliant optics (downlight only) place light where it's needed with minimal glare.

ELECTRICAL

- ▶ 0-10V dimming standard.
- ▶ 10kA/10kV surge protection standard.
- ▶ LED system is designed to minimize electrical connection points for increased reliability.

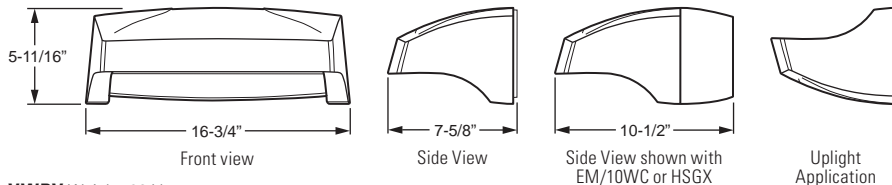


¹ For custom colors other than RAL, manufacturers' code plus two swatches (minimum 1" square) required.
² Please specify quantity required per project.

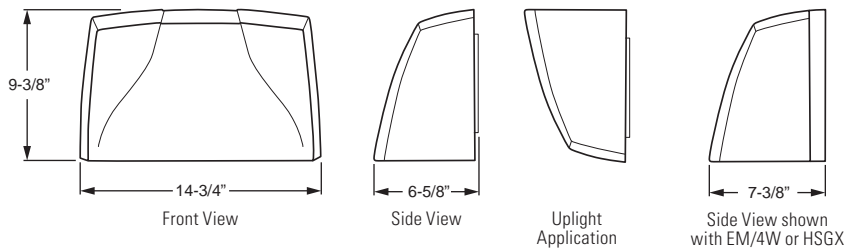
CATALOG #:					TYPE:				
PROJECT:					NOTES:				
EXAMPLE VWP H - L30/740 - T3 - DBZ - SDGL - OPTIONS - DIM - UNV									
SERIES	NOMINAL LENGTH	LUMEN PACKAGE	CRI & CCT	DISTRIBUTION	FINISH	SHIELDING	OPTIONS/ACCESSORIES	DRIVER	VOLTAGE

CROSS SECTIONS

VWPH Weight: 15 Lbs; maximum weight with EM/10WC or HSGX: 27 lbs.



VWPV Weight: 23 Lbs



ORDERING INFORMATION

SERIES
VWP Voltaire Architectural Wall Pack

TYPE
H Horizontal
V Vertical

LED PACKAGE
 See back for fixture performance data.

Example: L60/740			
LUMEN PACKAGE	NOMINAL LUMENS	MINIMUM CRI & CCT	AVERAGE SYSTEM WATTAGE
L30	3,000	730 = 70 CRI, 3000K 740 = 70 CRI, 4000K	36
L60	6,000	750 = 70 CRI, 5000K	70

DISTRIBUTION
T3 Type III
TFT Type Forward Throw

FINISH OPTIONS
 For custom color, visit the VWP at hew.com.¹
BLK Black (RAL #9004)
DBZ Dark bronze
DBR Medium bronze
GRAY Standard gray
SLV Satin aluminum (RAL #9006)
WHT White (RAL #9003)

SHIELDING
SDGL Solite® diffused textured tempered glass lens
CGL Clear tempered glass lens

OPTIONS
 See page 3 for option details.
EM/4W 4-watt integral emergency LED driver, 500 lumen output (120-277V only) VWPV includes housing extension (increases fixture depth)
SF Single fuse (120V, 277V, or 347V only; must specify voltage)

OPTIONS (Continued)

DF Double fuse (208V, 240V, or 480V only; must specify voltage)

PC Factory-installed button-style photocell (120V, 208V, or 277V only; must specify voltage)

HSGX Empty housing extension used to match units with EM or OCC option.

CONDUIT ENTRY
 Fixtures require housing extension when specified with conduit entry. Conduit entry provided with 1/2" NPT tapered pipe thread and plug. Conduit fitting to be supplied by others.

CR Right side conduit entry
CL Left side conduit entry
CD Dual conduit entry (left and right)

VWPH ONLY
EM/10WC 10-watt emergency LED driver, 1000 lumen output, low temperature, includes housing extension (increases fixture depth; 120-277V only; not available with CR and CD options)

OCCWS FSP-211-L Factory-installed occupancy sensor, includes housing extension (increases fixture depth), must specify lens, see page 2 for details. Optional FSIR-100 remote controller available, ordered separately, see accessories.

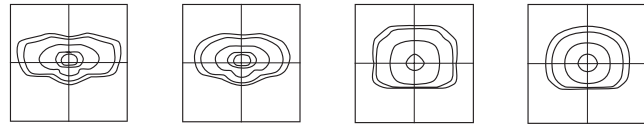
ACCESSORIES (VWPH only)
FSIR-100 Remote controller for occupancy sensor²

DRIVER
DIM Dimming driver prewired for 0-10V controls

VOLTAGE
120 120V
208 208V
277 277V
UNV 120-277V
347 347V (includes stepdown transformer)
480 480V (includes stepdown transformer)

LED

DISTRIBUTION



T3 Clear Glass (CGL) T3 Solite Glass (SDGL) TFT Clear Glass (CGL) TFT Solite Glass (SDGL)

SPECIFICATIONS

Housing – Die-cast aluminum enclosure.
Thermal Management – Integral die-cast aluminum heatsink and LED assembly provide passive thermal management. Rated -30°C to 40°C ambient operating temperature (-20°C to 40°C with EM/10WC; 0°C to 39°C with EM/4W).

Optical System – Precision, injection-molded, refractive acrylic lensing produces standard IES distributions.

LED Assembly – ANSI 3000K, 4000K, or 5000K CCT, minimum 70 CRI LEDs.

LED Driver – 0-10V dimming.

Electrical – 120-277, 347, and 480 VAC input range; 50-60Hz; power factor >.90; THD <20% at full load. FCC Class A compliant. 10kA/10kV surge protection standard. Quick-disconnect wiring provided.

Finish – Super durable polyester powder coat bonded to phosphate-free, multi-stage pretreated metal, meets and exceeds AAMA 2604 specifications for outdoor durability. Available in six standard colors. Custom colors available.

Mounting – Surface mounts directly over a 4" maximum outlet box. Must be anchored to adequate structure that can safely support fixture weight (VWPH = 15 lbs, VWPV = 23 lbs).

Listings –

- cCSAus certified as luminaire suitable for wet locations.
- DesignLights Consortium qualified product. Not all versions of this product may be DLC qualified, see the DLC Qualified Products List at www.designlights.org/QPL.
- Calculated L70 lumen maintenance >50,000 hours per IES TM-21.
- Tested to IES LM-79-08 standards.
- Lighting Facts listed.
- IDA Dark-Sky approved (downlight applications only).
- RoHS compliant.
- IP65 rated.
- Title 24 compliant with OCCWS FSP-211-L_ option.
- BUG classified per IES TM-15-11.

Warranty – 5-year limited warranty, see hew.com/warranty.

FIXTURE PERFORMANCE DATA

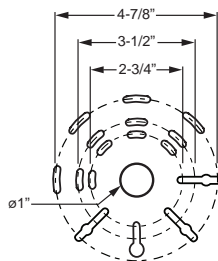
SERIES	DISTRIBUTION	LUMEN PACKAGE	WATTAGE ¹	CCT	CLEAR GLASS (CGL)		SOLITE GLASS (SDGL)		BUG RATINGS	
					DELIVERED LUMENS ^{2,3}	EFFICACY (LM/W) ^{2,3}	DELIVERED LUMENS ^{2,3}	EFFICACY (LM/W) ^{2,3}		
VWPH	T3	L30	36	3000	3174	88.2	2963	82.3	B1-U0-G1	
				4000	3327	92.4	3106	86.3		
				5000	3438	95.5	3209	89.1		
		L60	70	3000	5933	84.8	5887	84.1		B1-U0-G1
				4000	6611	94.4	6172	88.2		
				5000	6831	97.6	6376	91.1		
	TFT	L30	36	3000	2713	75.4	2533	70.4	B1-U0-G1	
				4000	2844	79.0	2655	73.8		
				5000	2939	81.6	2743	76.2		
		L60	70	3000	5470	78.1	5065	72.4		B2-U0-G2
				4000	5688	81.3	5309	75.8		
				5000	5876	83.9	5486	78.4		
VWPV	T3	L30	36	3000	3115	86.5	2908	80.8	B1-U0-G1	
				4000	3403	94.5	3177	88.3		
				5000	3385	94.0	3160	87.8		
		L60	70	3000	6171	88.2	5813	83.0		B2-U0-G1
				4000	6804	97.2	6351	90.7		
				5000	6767	96.7	6317	90.2		
	TFT	L30	36	3000	2840	78.9	2651	73.6	B1-U0-G1	
				4000	3103	86.2	2896	80.4		
				5000	3086	85.7	2881	80.0		
		L60	70	3000	5822	83.2	5126	73.2		B3-U0-G1
				4000	5999	85.7	5600	80.0		
				5000	5967	85.2	5570	79.6		

¹ Wattage shown is average for 120V through 277V input.

² Efficacy/lumen output shown is average based on voltage input of 120V through 277V.

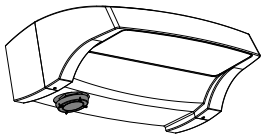
³ Photometrics tested in accordance with IESNA LM-79. Results shown are based on 25°C ambient temperature.

BOLT PATTERN DETAIL



OPTIONS

OCCUPANCY SENSOR



EXAMPLE

OCCWS FSP-211 - L2

OCCUPANCY
SENSOR

LENS

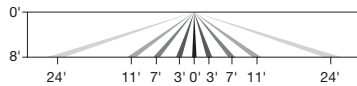
- ▶ Fully adjustable high and low dimmed light levels.
- ▶ Designed for LED fixtures; rated for extreme temperatures and up to 200,000 on/off cycles.
- ▶ Hold-off setpoint with automatic calibration option for convenience and added energy savings.
- ▶ Adjustable via handheld wireless configuration tool (ordered separately).
- ▶ IP66 rated with choice of lenses for wet and outdoor locations, and mounting heights from 8' to 20'.
- ▶ Adjustable time delay and cutoff delay.
- ▶ Factory set to 10% dimming at 5 minutes, cutoff at 1 hour.

OCCUPANCY SENSOR
ORDERING INFORMATION

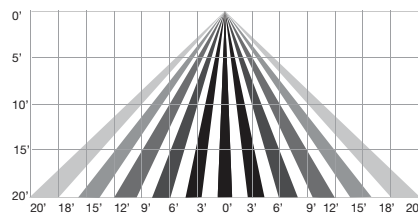
OCCWS FSP-211-__ Factory-installed occupancy sensor, must specify lens (120V or 277V only)

LENS

- L2** Coverage at 8' mounting height: ø48'
- L3** Coverage at 20' mounting height: ø40'



L2 Lens



L3 Lens

PC



Factory-installed button-style photocell (120V, 208V, or 277V only; must specify voltage)

FSIR-100 – Occupancy Sensor Remote



Initial setup and subsequent sensor adjustments are made using a handheld configuration tool (FSIR-100). The wireless tool stores up to five sensor parameter profiles to speed configuration of multiple sensors. Please specify quantity required per project.

Visit www.wattstopper.com for more information.

