

SLOPED INDUSTRIAL

GLS

LED

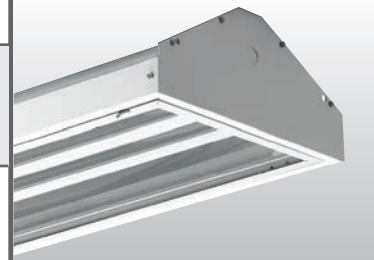
CATALOG #: _____ TYPE: _____

PROJECT: _____

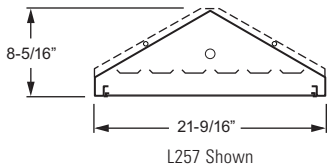
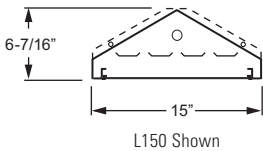
NOTES: _____

EXAMPLE **GLS - 4 - L257/840 - F CHA118 - OPTIONS - DRV - UNV**

SERIES NOMINAL LENGTH LUMEN PACKAGE CRI & CCT DOOR FRAME SHIELDING OPTIONS DRIVER VOLTAGE



CROSS SECTIONS



ORDERING INFORMATION

SERIES
GLS Sloped Industrial

NOMINAL LENGTH
4 4'

EXAMPLE: L257/840			
LUMEN PACKAGE	NOMINAL LUMENS	MINIMUM CRI & CCT	AVERAGE SYSTEM WATTAGE
L150	15,000	840 = 82 CRI, 4000K	139
L257	25,700	850 = 82 CRI, 5000K	238

Additional LED lumen packages available, see options.

DOOR FRAME
F White flat aluminum

SHIELDING
CHA118 Clear, high-temperature, non-prismatic acrylic, .118" thick

OPTIONS
 For occupancy sensor options, see [Technical Info](#).

EM/10W 10-watt emergency driver (120-277V only; L150 only)

(L__) Additional lower lumen packages available. Specify in increments of 100 nominal lumens. Option must be specified with next *higher* lumen package.
Example: 20,000 nominal lumens = GLS-4-L257/840-FCHA118-(**L200**)

S7238/B 72" cord, 3-conductor, No. 18 AWG, black (DRV only)

S7258/B 72" cord, 5-conductor, No. 18 AWG, black (DIM only)

6CPI/L5-15P/TWLK 6' cord and NEMA twistlock 15 AMP plug, 120V (DRV only)

6CPI/L7-15P/TWLK 6' cord and NEMA twistlock 15 AMP plug, 277V (DRV only)

ACCESSORIES
 See Technical Info for [accessory details](#).

WG11 11-gauge wireguard, white powder coated

VB1 (2) Y-hangers

VB1-2 (2) Y-hangers and (2) 2' chains

HUB MT 3/4" Cast iron hub and junction box for single 3/4" pendant mount (shipped not attached)

DRIVER

DRV Driver prewired for non-dimming applications

DIM Driver prewired for 0-10V low-voltage dimming applications

VOLTAGE
 Must specify voltage (not UNV) if using cord and plug or occupancy sensor.

120 120V

208 208V

240 240V

277 277V

UNV 120-277V

480 480V (not available with EM options)

FEATURES

- ▶ Designed with an angled back and flangeless sides that diminish dust build-up on the fixture housing. ¹
- ▶ Optional energy-saving occupancy sensors available.
- ▶ Includes double-gasketed lens to reduce, not prevent, dust entry into the fixture. ¹
- ▶ Clear acrylic lens standard.
- ▶ LED technology provides high efficacy and energy efficiency.
- ▶ Rated for 50,000 hours at 70% lumen maintenance (L70).
- ▶ Minimum 82 CRI; 4000K or 5000K CCT.
- ▶ This fixture is proudly made in the USA.

¹ The GLS is not rated as a dust-tight fixture.



LED

LED PHOTOMETRY

Catalog #: **GLS-4-L257/840-FCHA118-DRV-UNV**

SPECIFICATIONS

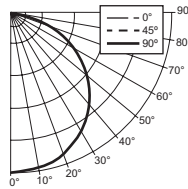
- Housing** – .040" die-formed aluminum housing.
- Door Frame** – Extruded aluminum, double-gasketed door frame. T-slot steel hinge allows reversible hinging and latching.
- Shielding** – Clear, high-temperature, non-prismatic acrylic, .118" thick.
- Finish** – 92% minimum average reflective white polyester powder coat bonded to phosphate-free, multi-stage pretreated metal. All parts painted after fabrication to facilitate installation, increase efficiency, and inhibit corrosion.
- Electrical** – High quality mid-power LED boards. L70 at 50,000 hours. 40°C maximum ambient operating temperature.
- Mounting** – Suspended.
- Labels** – cCSAus certified as luminaire suitable for dry or damp locations.
- Warranty** – 5-year limited fixture warranty, see www.hew.com/warranty.

IMPORTANT:

Electrostatic sensitive unit. Observe precautions when handling.

TEST REPORT INFORMATION

- ▶ Test Report #: 18701.0
- ▶ Date: 02/12/15
- ▶ Lamp Type: LED
- ▶ **Rated Lumens: 25650**
- ▶ **Watts: 238.9**
- ▶ **Lumens Per Watt: 107.4**
- ▶ **CRI: 83**
- ▶ **CCT: 3961K**



CANDLEPOWER DISTRIBUTION

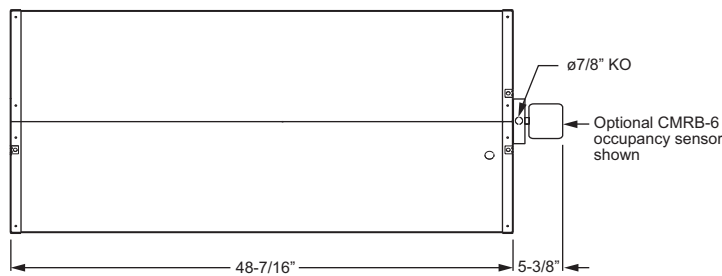
Vertical Angle	Horizontal Angle			Zonal Lumens
	0°	45°	90°	
0°	9815.	9815.	9815.	926.3
5°	9710.	9701.	9706.	926.3
15°	9321.	9308.	9308.	2639.5
25°	8722.	8752.	8748.	4043.5
35°	7611.	7668.	7751.	4822.9
45°	6609.	6679.	6452.	5145.5
55°	4851.	4702.	4203.	4094.9
65°	3106.	2646.	2769.	2838.9
75°	1225.	932.	866.	1037.7
85°	122.	83.	74.	100.8
90°	0.	0.	0.	

LUMEN SUMMARY

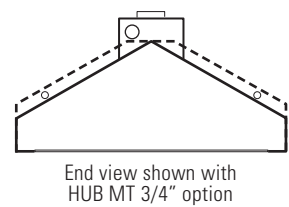
Zone	Lumens	% Fixture
0° - 30°	7609.	29.7
0° - 40°	12432.	48.5
0° - 60°	21673.	84.5
0° - 90°	25650.	100.0
Total Luminaire:		
0° - 180°	25650.	100.0
IES Spacing Criteria: End = 1.2 Across = 1.2 Diagonal = 1.2		

FIXTURE DETAILS

BACK VIEW



HUB MOUNT OPTION



DLC qualified products listed at www.designlights.org.

The U.S. Department of Energy's Lighting Facts® Program has verified product performance based on industry-standardized testing. For details, see H.E. Williams GLS series at www.lightingfacts.com.

