

# MEDIUM SHALLOW-BACK WALL PACK

# WP1

## LED

CATALOG #: \_\_\_\_\_ TYPE: \_\_\_\_\_

PROJECT: \_\_\_\_\_

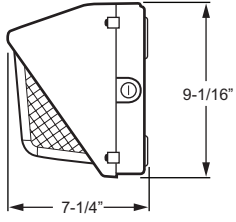
NOTES: \_\_\_\_\_

**EXAMPLE** WP1 - L44/850 - OPTIONS - DIM - UNV

SERIES      LUMEN PACKAGE      CRI & CCT      OPTIONS/ACCESSORIES      DRIVER      VOLTAGE



### CROSS SECTION



14-1/4" x 9-1/16" x 7-1/4"

### ORDERING INFORMATION

**SERIES**  
**WP1** Medium Shallow-Back Wall Pack

**LED PACKAGE**

EXAMPLE: L44/850			AVERAGE SYSTEM WATTAGE
LUMEN PACKAGE	NOMINAL LUMENS	MINIMUM CRI & CCT	
L44	4400	850 = 80 CRI, 5000K	48

**ACCESSORIES** (only one lens-mounted accessory per fixture)

- See page 2 for details.
- FCS** Full cutoff shield
  - SCS** Side cutoff shield
  - PVS** Polycarbonate vandal shield
  - WG** Stainless steel wireguard

**DRIVER**  
**DIM** 10% dimming driver prewired for 0-10V low voltage applications

- OPTIONS**
- SF** Single fuse (120V, 277V, or 347V only; must specify voltage)
  - DF** Double fuse (208V, 240V, or 480V only; must specify voltage)
  - SP2** 2.5kV surge protection (277V only)
  - PC** Factory-installed photocell (120V, 208V and 277V only, must specify voltage)

- VOLTAGE**
- 120** 120V
  - 208** 208V
  - 240** 240V
  - 277** 277V
  - UNV** 120-277V
  - 347** 347V
  - 480** 480V

### FEATURES

- ▶ Dark bronze finish only.
- ▶ Wet location listed.
- ▶ Fully gasketed side-hinging door.
- ▶ Optional stainless steel wireguard, cutoff shields, and vandal shield available.
- ▶ 1/2" NPS threaded hub and plugged conduit entry points.



## LED

### SPECIFICATIONS

**Housing** – Die-cast aluminum.  
**Lens** – Impact-resistant prismatic borosilicate glass refractor.  
**Finish** – Powder coated finish on heavy-duty die-cast housing. Bronze finish only.  
**Electrical** – Electronic 120-277V or 347/480V dimmable driver. Metal core PCB LED array.  
**Mounting** – Wall mounts directly over a 4" maximum recessed outlet box or accepts 1/2" surface conduit.  
**Labels** – cCSAus listed to STD22.2 No. 250.0 certified as luminaire suitable for wet locations. 40°C maximum ambient operating temperature.  
**Warranty** – 5-year limited warranty.

### ACCESSORIES

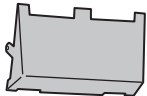
#### FCS



#### SCS



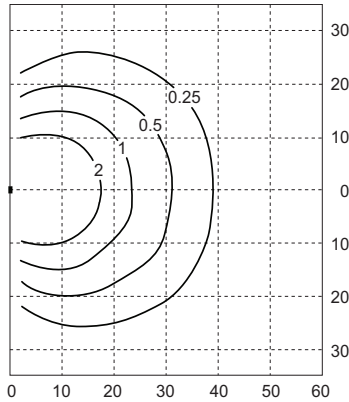
#### PVS



#### WG



### FOOTCANDLE DISTRIBUTION



FIXTURE: **WP1-L44/850**

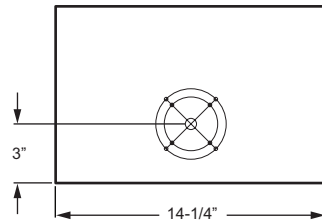
Footcandle calculations based on standard building reflectance of .10 with a ground reflectance of .0 and a light loss factor of .90.

Fixture installed at 12' mounting height.

- ▶ **Efficacy: 94 lm/W**
- ▶ **Flux: 4544 lm**
- ▶ **CRI: 84**
- ▶ **CCT: 5278**
- ▶ **BUG Ratings: B1-U4-G3**

### MOUNTING

#### BACKVIEW



#### BOLT CIRCLE PATTERN DETAIL

