

ROUND WALL PACK

WPRD

LED

CATALOG #: _____ TYPE: _____

PROJECT: _____

NOTES: _____

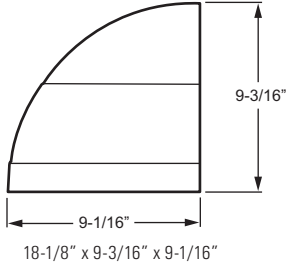
EXAMPLE **WPRD - L43/850 - OPTIONS - DIM - UNV**

SERIES LUMEN PACKAGE CRI & CCT OPTIONS DRIVER VOLTAGE



CROSS SECTION

This fixture does not comply with Buy American/ARRA and similar regulatory programs.



FEATURES

- ▶ Clear glass lens.
- ▶ Heavy-duty die-cast aluminum construction.
- ▶ Fully gasketed for wet locations.
- ▶ Provides full cutoff. Meets dark sky requirements.
- ▶ Dark bronze finish only.

ORDERING INFORMATION

SERIES

WPRD Round Wall Pack

OPTIONS

SF Single fuse (120V or 277V only; must specify voltage)

DF Double fuse (208V or 240V only; must specify voltage)

SP2 2.5kV surge protection

LED PACKAGE

EXAMPLE: L43/850			
LUMEN PACKAGE	NOMINAL LUMENS	MINIMUM CRI & CCT	AVERAGE SYSTEM WATTAGE
L43	4300	850 = 80 CRI, 5000K	52

DRIVER

DIM Driver prewired for 0-10V low voltage dimming applications

VOLTAGE

120 120V

208 208V

240 240V

277 277V

UNV 120-277V

347 347V

480 480V

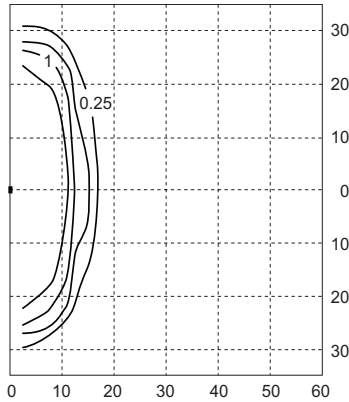


LED

FOOTCANDLE DISTRIBUTION

SPECIFICATIONS

- Housing** – Die-cast aluminum.
- Lens** – Tempered, flat, clear glass.
- Finish** – Powder coated finish on heavy-duty die-cast housing. Dark bronze finish only.
- Electrical** – Electronic 120-277V or 347/480V dimmable driver. Metal core PCB LED array.
- Mounting** – Wall mounts directly over a 4" maximum recessed outlet box.
- Labels** – cCSAus listed to STD22.2 No. 250.0 certified as luminaire suitable for wet locations. 40°C maximum ambient operating temperature.
- Warranty** – 5-year limited warranty.



FIXTURE: **WPRD-L43/850**

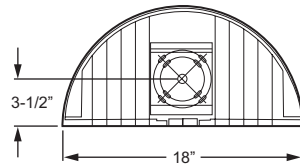
Footcandle calculations based on standard building reflectance of .10 with a ground reflectance of .0 and a light loss factor of .90.

Fixture installed at 12' mounting height.

- ▶ **Efficacy: 83.6 lm/W**
- ▶ **Flux: 4305 lm**
- ▶ **CRI: 80**
- ▶ **CCT: 5081**
- ▶ **BUG Ratings: B1-U1-G1**

MOUNTING

BACKVIEW



BOLT CIRCLE PATTERN DETAIL

